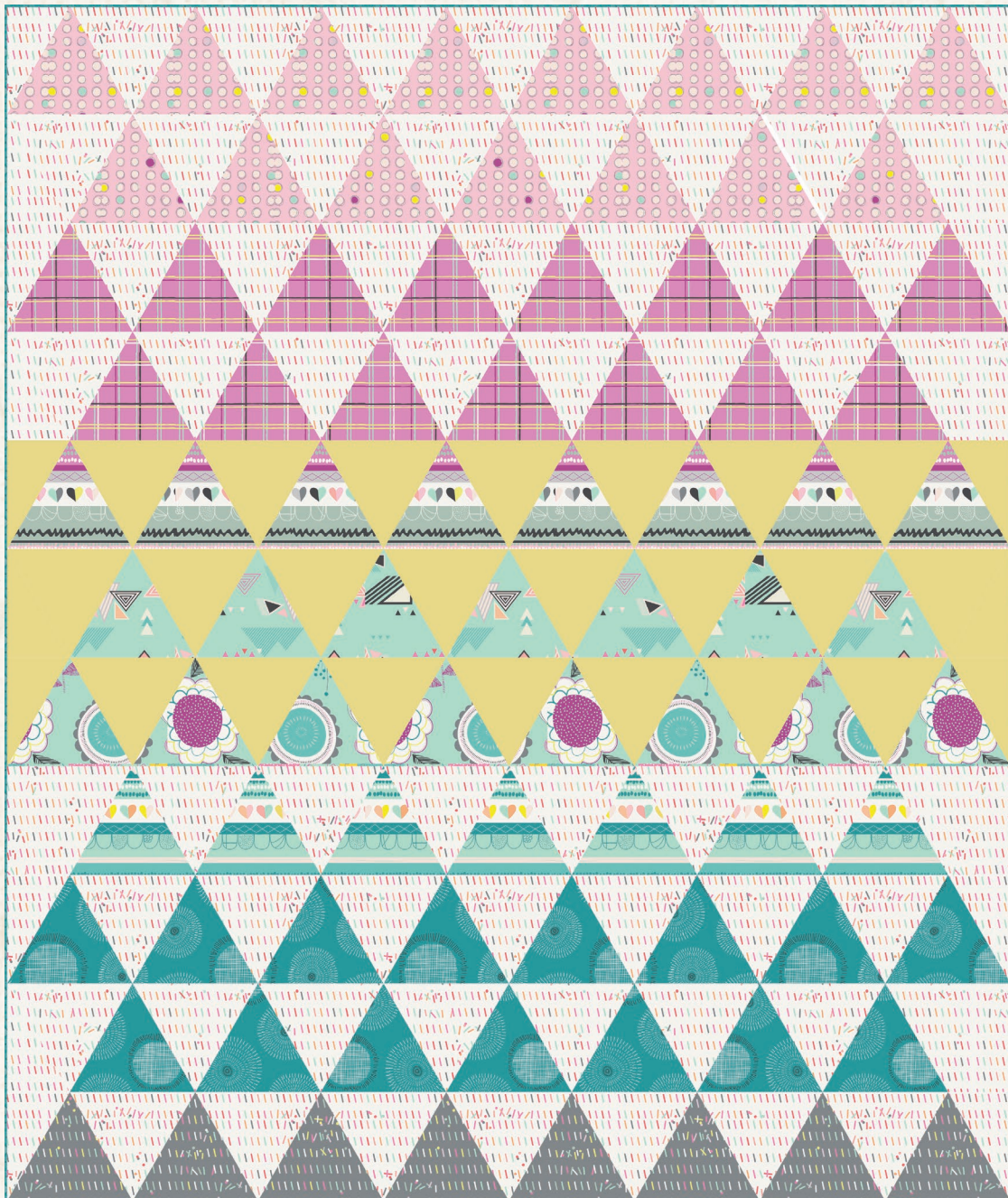


|||||X/YiX/YX/Y|||||



XXXXXXXXXXXXXXXXXXXXXXXXXXXX



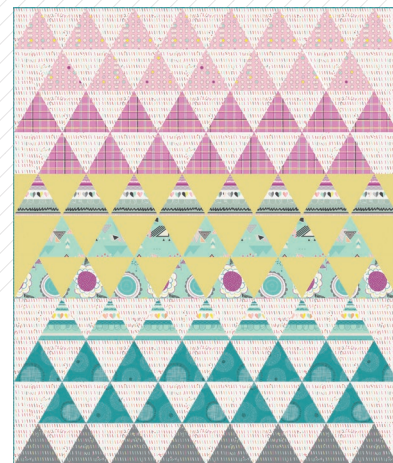
# CONFETTI

AGFstudio

QUILT DESIGNED BY AGF STUDIO

## PLAYING POP

FABRICS DESIGNED BY AGF STUDIO

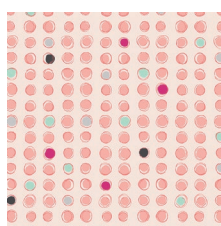


COLOR OPTION

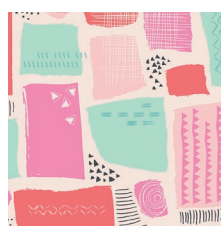
SOFT SERVE SOUND



POP-1280  
FLORAL DUMS PUNCH



POP-1281  
DOTS BURST MELON



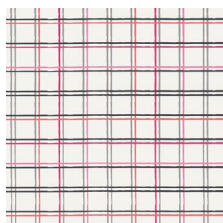
POP-1282  
SUGAR CRYSTALS SWEET



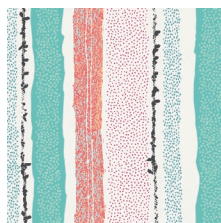
POP-1283  
SPRINKLES GLITCH RAINBOW



POP-1284  
MODPOP DECO



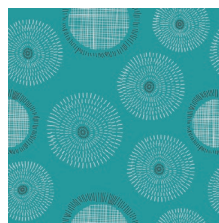
POP-1285  
PLAID BEAT SPARKLING



POP-1286  
STRAWS OF ROCK CANDY



POP-1287  
WAVING BUDS CANDIED

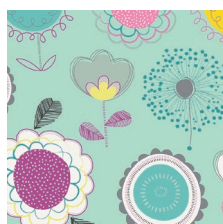


POP-1288  
SOUND BUBBLES TEAL

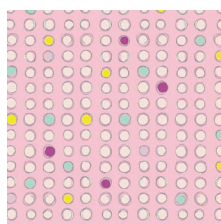


POP-1289  
CLUELESS HEARTS INNOCENCE

FRIZZY FLOATS FUN



POP-2280  
FLORAL DUMS GUM



POP-2281  
DOTS BURST FREESIA



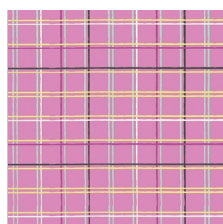
POP-2282  
SUGAR CRYSTALS SOUR



POP-2283  
SPRINKLES GLITCH IRIS



POP-2284  
MODPOP CITRUS



POP-2285  
PLAID BEAT GRAPE



POP-2286  
STRAWS OF RIP ROLLS



POP-2287  
WAVING BUDS GLAZED



POP-2288  
SOUND BUBBLES LIGHT



POP-2289  
CLUELESS HEARTS PASSION



FEEL THE DIFFERENCE © 2015 Courtesy of Art Gallery Quilts LLC. All Rights Reserved.

# CONFETTI

FINISHED SIZE | 64" x 76"

## FABRIC REQUIREMENTS

Fabric <b>A</b>	POP-2281	½ yd.
Fabric <b>B</b>	POP-2285	½ yd.
Fabric <b>C</b>	POP-2289	¾ yd.
Fabric <b>D</b>	POP-1284	¾ yd.
Fabric <b>E</b>	POP-2280	¾ yd.
Fabric <b>F</b>	POP-1289	¾ yd.
Fabric <b>G</b>	POP-1288	¾ yd.
Fabric <b>H</b>	POP-2283	¾ yd.
Fabric <b>I</b>	POP-1283	2 ¼ yd.
Fabric <b>J</b>	PE-446	1 yd.

### BACKING FABRIC

POP-2287 4 yds. (Suggested)

### BINDING FABRIC

POP-1288 (Fabric **G**) (included)

## CUTTING DIRECTIONS

¼" seam allowances are included.  
WOF means width of fabric.

- Fifteen (15) template triangles from fabric **A**
- Fifteen (15) template triangles from fabric **B**
- Eight (8) template triangles from fabric **C**
- Seven (7) template triangles from fabric **D**
- Eight (8) template triangles from fabric **E**
- Seven (7) template triangles from fabric **F**
- Fifteen (15) template triangles from fabric **G**
- Eight (8) template triangles from fabric **H**
- Seventy-six (76) template triangles from fabric **I**
- Twenty-eight (28) template triangles from fabric **J**

## CONSTRUCTION

Sew all rights sides together with ¼" seam allowance.

- Referring to the cover picture arrange triangles into eleven rows, with seventeen triangles in each row.
- Alternate the direction of each triangle's tip, beginning with the first triangle pointing down.

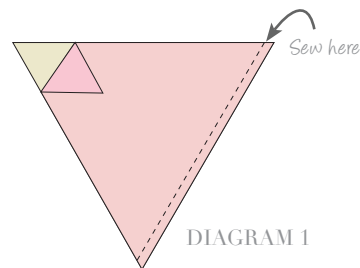


DIAGRAM 1

- Trim the first and last triangle of the row in half.
- Continue placing triangles together in the same manner until you complete the eleven rows.

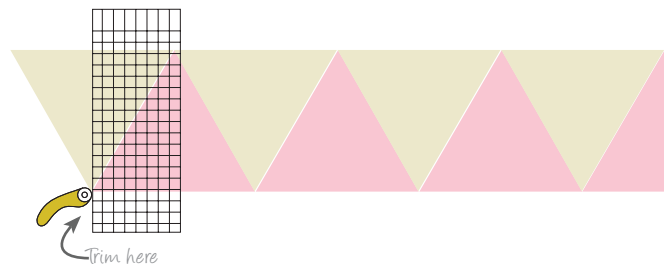


DIAGRAM 2

## ASSEMBLING THE TOP

Sew all rights sides together with ¼" seam allowance. Press open.

- Refer to cover picture for fabric placement.
- Determine the width of the first row by measuring through its center and start sewing the rows together.

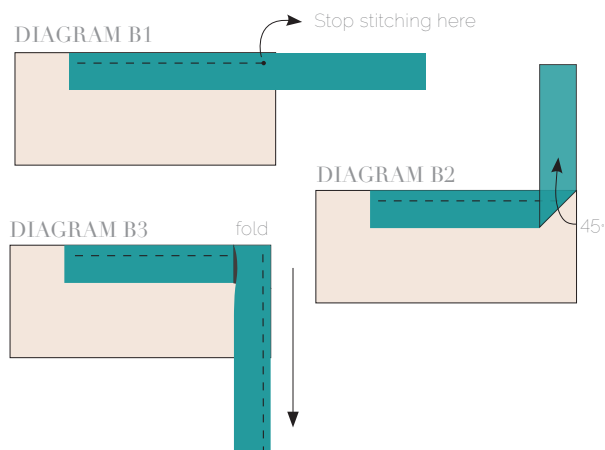


## QUILT ASSEMBLY

*Sew rights sides together.*

- Place BACKING FABRIC on a large surface wrong side up. Stretch it with masking tape against that surface.
- Place BATTING on top of backing fabric.
- Place TOP on top of the batting with right side facing up. Smooth away wrinkles using your hands.
- Pin all layers together and baste with basting thread, using long stitches. You can also use safety pins to join the layers.
- Machine or hand quilt starting at the center and working towards the corners. Remember that quilting motifs are a matter of personal preference. Have fun choosing yours!
- After you finished, trim excess of any fabric or batting, squaring the quilt to proceed to bind it.

- Stop stitching before you reach the last 5 or 6 inches. Cut the threads and remove the quilt from under the machine presser foot. Lay the loose ends of the binding flat along the quilt edge, folding the ends back on themselves where they meet. Press them together to form a crease. Using this crease as the stitching line, sew the two open ends of the binding with right sides together (you can help yourself marking with a pencil if the crease is difficult to see).
- Trim seam to  $\frac{1}{4}$ " and press open. Complete the sewing. Turn binding to back of the quilt, turn raw edge inside and stitch by hand using blind stitch.



[artgalleryfabrics.com](http://artgalleryfabrics.com)

*NOTE: While all possible care has been taken to ensure the accuracy of this pattern, We are not responsible for printing errors or the way in which individual work varies. Please read instructions carefully before starting the construction of this quilt. If desired, wash and iron your fabrics before starting to cut.*

## BINDING

*Sew rights sides together.*

- Cut enough strips  $1\frac{1}{2}$ " wide by the width of the fabric **G** to make a final strip 290" long. Start sewing the binding strip in the middle of one of the sides of the quilt, placing the strip right side down and leaving an approximated 5" tail. Sew with  $\frac{1}{4}$ " seam allowance (using straight stitch), aligning the strip's raw edge with the quilt top's raw edge.
- Stop stitching  $\frac{1}{4}$ " before the edge of the quilt (**DIAGRAM B 1**). Clip the threads. Remove the quilt from under the machine presser foot. Fold the strip in a motion of 45° and upward, pressing with your fingers (**DIAGRAM B2**). Hold this fold with your finger, bring the strip down in line with the next edge, making a horizontal fold that aligns with the top edge of the quilt (**DIAGRAM B3**). Start sewing at  $\frac{1}{4}$ " of the border, stitching all the layers. Do the same in the four corners of the quilt.

© 2015 Courtesy of Art Gallery Quilts LLC. All Rights Reserved.

