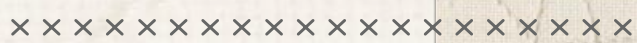




abundance 



FREE PATTERN



abundance  JENI BAKER
 QUILT DESIGNED BY JENI BAKER



COLOR OPTION


 CURIOSITIES


FABRICS DESIGNED BY JENI BAKER

FRESH ENCOUNTERS



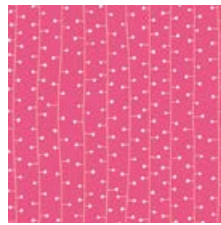
CUR-19130
 SPLENDIFEROUS WARM



CUR-19131
 FIREFLY JAR TANG



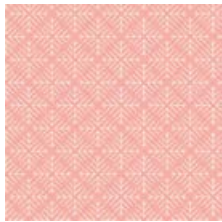
CUR-19132
 SWEET NOTHINGS FONDS



CUR-19133
 STRINGS LIGHTS CERISE



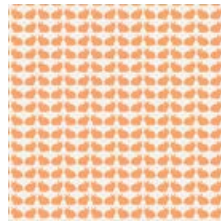
CUR-19134
 HERITAGE MEDALS KLAR



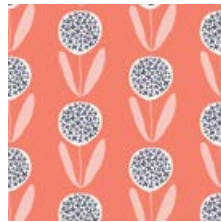
CUR-19136
 CAUGHT SNOW FLAKES BLUSH



CUR-19137
 FIREFLY JAR DARK



CUR-19138
 CURIIOUS BUNNIES FUN



CUR-19139
 CANDIED LOLLIES ORANGE



CUR-19140
 TIDY CURLERS

SWEET FINDS



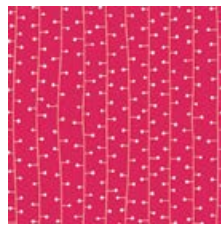
CUR-29130
 SPLENDIFEROUS CHILL



CUR-29131
 JAR GLOW



CUR-29132
 SWEET NOTHINGS
 BREEZE



CUR-29133
 STRINGS LIGHTS CARMIN



CUR-29134
 HERITAGE MEDALS IMMER



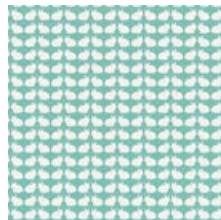
CUR-29135
 BOOK PRESSED MEM-
 ORIES



CUR-29136
 CAUGHT SNOW FLAKES NAVY



CUR-29137
 FIREFLY JAR SOFT



CUR-29138
 CURIIOUS BUNNIES CALM



CUR-29139
 CANDIED LOLLIES MINT



abundance

FINISHED SIZE | 60' x 75'

FABRIC REQUIREMENTS

Fabric A	CUR-19130	1 FQ.
Fabric B	CUR-19131	1 FQ.
Fabric C	CUR-19132	1 FQ.
Fabric D	CUR-19133	1 FQ.
Fabric E	CUR-19134	1 FQ.
Fabric F	CUR-19136	1 FQ.
Fabric G	CUR-19137	1 FQ.
Fabric H	CUR-19138	1 FQ.
Fabric I	CUR-19139	1 FQ.
Fabric J	CUR-19140	1 FQ.
Fabric K	PE-408	2 ¼ YD.
Fabric L	PE-428	½ YD.
BACKING FABRIC		
CUR-19132 4 yds. <i>(Suggested)</i>		
BINDING FABRIC		
PE-428 (Fabric L) <i>(included)</i>		

CUTTING DIRECTIONS

¼" seam allowances are included.
WOF means width of fabric.

- Twelve (12) 3' x 6' rectangles from fabrics **A-J**
- Four (4) 3' x 8' rectangles from fabrics **A-J**
- One-Hundred & Twenty (120) 3' x 6' rectangles from fabric **K**
- Forty (40) 3' x 8' rectangles from fabric **K**

CONSTRUCTION

Sew all rights sides together with ¼" seam allowance.

- There are two block combinations for the construction of this quilt top.
- Starting with the construction of block **a**, take two 3' x 6' rectangles from fabric **A** and one 3' x 6' rectangle from fabric **K**
- Attach them together in the order **AKA** to form a single strip set. Press seams open.



DIAGRAM 1

- Cut strip set in half into two 3' x 8' pieces.



DIAGRAM 2

- Arrange pieces with a 3' x 8' rectangle from fabric **K** in the middle.
- Sew together along the long edges to complete the block. Press seams open
- Repeat the previous steps to create a total of forty blocks (40) four from each fabric **A-J**



DIAGRAM 3

