

X  
X  
X  
X  
X  
X  
X  
X  
X  
X  
X  
X  
X

## This image displays a complex quilt pattern, likely a variation of a traditional 'Star' or 'Log Cabin' design. The pattern is composed of numerous small, repeating geometric units, primarily triangles and squares, arranged in a grid-like fashion. The color palette is rich and varied, including deep reds, blues, greens, and blacks, which are set against a light, off-white background. The overall effect is a dense, textured surface with a strong sense of rhythm and balance. The pattern is symmetrical and repeats across the entire visible area, creating a visually striking and intricate design.

XXXXXXXXXXXXXXXXXXXXXXXXXXXX





# VENTURE

Pat Bravo

QUILT DESIGNED BY PAT BRAVO



COLOR OPTION

FABRICS DESIGNED BY PAT BRAVO

DARE TO BE BOLD



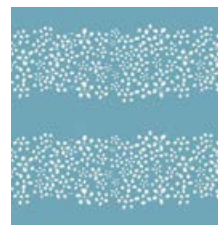
DAR-54300  
BRAVE BLOOMED FIRM



DAR-54301  
WAFITING PLAID TRACED



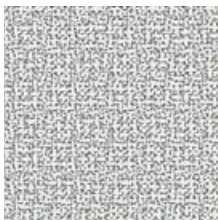
DAR-54302  
TWIRLING IDEAS PUNCH



DAR-54303  
A PATH OF CLARITY



DAR-54304  
POP ART SPRING BLOSSOM



DAR-54305  
THREAD ON DELIGHT



DAR-54306  
OPT OUT OF NORM



DAR-54307  
DEFYING BUDS SEA



DAR-54308  
REBEL BRUSHSTROKES



DAR-54309  
DARING DOTS

DARE TO BE FUNKY



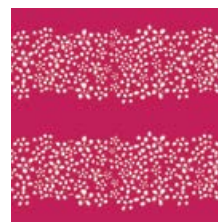
DAR-64300  
BRAVE BLOOMED LIT



DAR-64301  
WAFITING PLAID MARKED



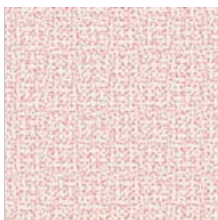
DAR-64302  
TWIRLING IDEAS CLEAR



DAR-64303  
A PATH OF PASSION



DAR-64304  
POP ART WINTER FLOWER



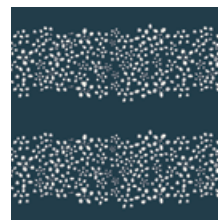
DAR-64305  
THREAD ON CHARM



DAR-64306  
OPT OUT OF PAR



DAR-64307  
DEFYING BUDS AIR



DAR-64310  
A PATH OF CERTAINTY



DAR-64311  
OPEN DOORS



FEEL THE DIFFERENCE © 2015 Courtesy of Art Gallery Quilts LLC. All Rights Reserved.

# VENTURE

FINISHED SIZE | 60" x 72"

## FABRIC REQUIREMENTS

Fabric <b>A</b>	DAR-64304	¾ yd.
Fabric <b>B</b>	DAR-64300	⅝ yd.
Fabric <b>C</b>	DAR-64311	1½ yds.
Fabric <b>D</b>	DAR-54308	¾ yd.
Fabric <b>E</b>	DAR-64303	½ yd.
Fabric <b>F</b>	DAR-54301	½ yd.
Fabric <b>G</b>	DAR-64310	¾ yd.
Fabric <b>H</b>	DAR-64305	½ yd.
Fabric <b>I</b>	DAR-64302	¾ yd.
Fabric <b>J</b>	PE-433	1 ¼ yds.

### BACKING FABRIC

DAR-64307 4 1/2 yds. *(Suggested)*

### BINDING FABRIC

DAR-64300 (Fabric **B**) *(included)*

## CUTTING DIRECTIONS

¼" seam allowances are included.  
HST means Half Square Triangle.

Cut from Fabric **A, C, D, G, and I**:

Six (6) 9 3/8" x 9 3/8" squares

Cut squares on the diagonal. You should have a total of 12 triangles in each fabric.

Cut from Fabric **B, C, E, F, and H**:

Six (6) 4 1/2" x 8 1/2" rectangles

Twelve (12) 2 1/2" x 4 1/2" rectangles

Cut from Fabric **J**:

Sixty (60) 2 7/8" x 2 7/8" squares

Sixty (60) 3 3/4" x 3 3/4" squares

Cut all squares from Fabric **J** on the diagonal

## CONSTRUCTION

*Sew all rights sides together with ¼" seam allowance.*

- Make five (5) HST's from the following fabrics, **A/D**, **C/D**, **C/G**, **G/I**, and **A/I**.



**A/D**



**C/D**



**C/G**



**G/I**



**A/I**

DIAGRAM 1

- Next take two halves of a 2 7/8" square from Fabric **J**. Sew each half to each side of a 2 1/2" x 4 1/2" rectangle from Fabric **C**. (Diagram 2.1) Repeat this same process to create two pieces that look like Diagram 2.2.



DIAGRAM 2.1



DIAGRAM 2.2

- Take a 4 1/2" x 8 1/2" rectangle from Fabric **C** and sew each piece created in Diagram 2 to each side following Diagram 3.



- 
- A diagram of a hexagonal unit cell. The central hexagon is filled with a complex, repeating pattern of small squares in red, blue, and green, separated by thin black lines. Four triangles, each with a black outline and a light beige fill, are positioned around the hexagon: one above, one below, one to the left, and one to the right. Arrows point from each triangle towards the center of the hexagon, indicating a central point or a specific orientation.

DIAGRAM 4.1

- 
- DIAG

DIAGRAM 4.2

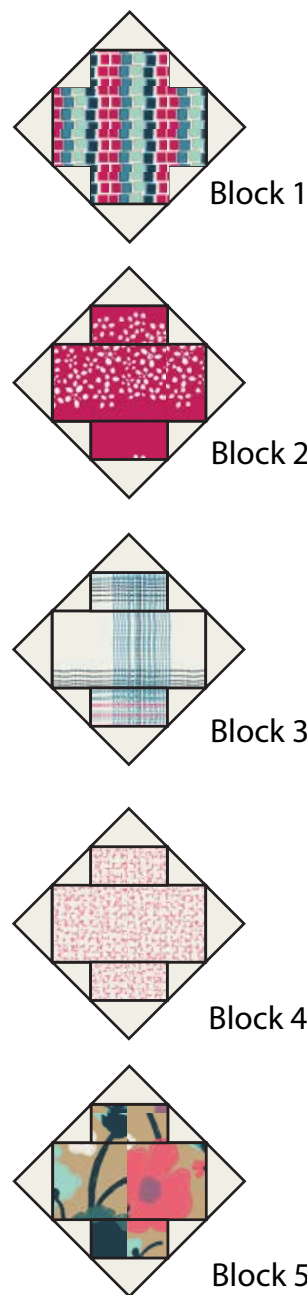


DIAGRAM 5

- 
- Cut in Half

DIAGRAM 6



## ASSEMBLING THE TOP

*Sew all rights sides together with 1/4" seam allowance. Press open.*

- Arrange blocks and half square triangles in diagonal rows following Diagram 7 and the cover illustration as a guide. Once all diagonal rows are sewn together, sew each row together.

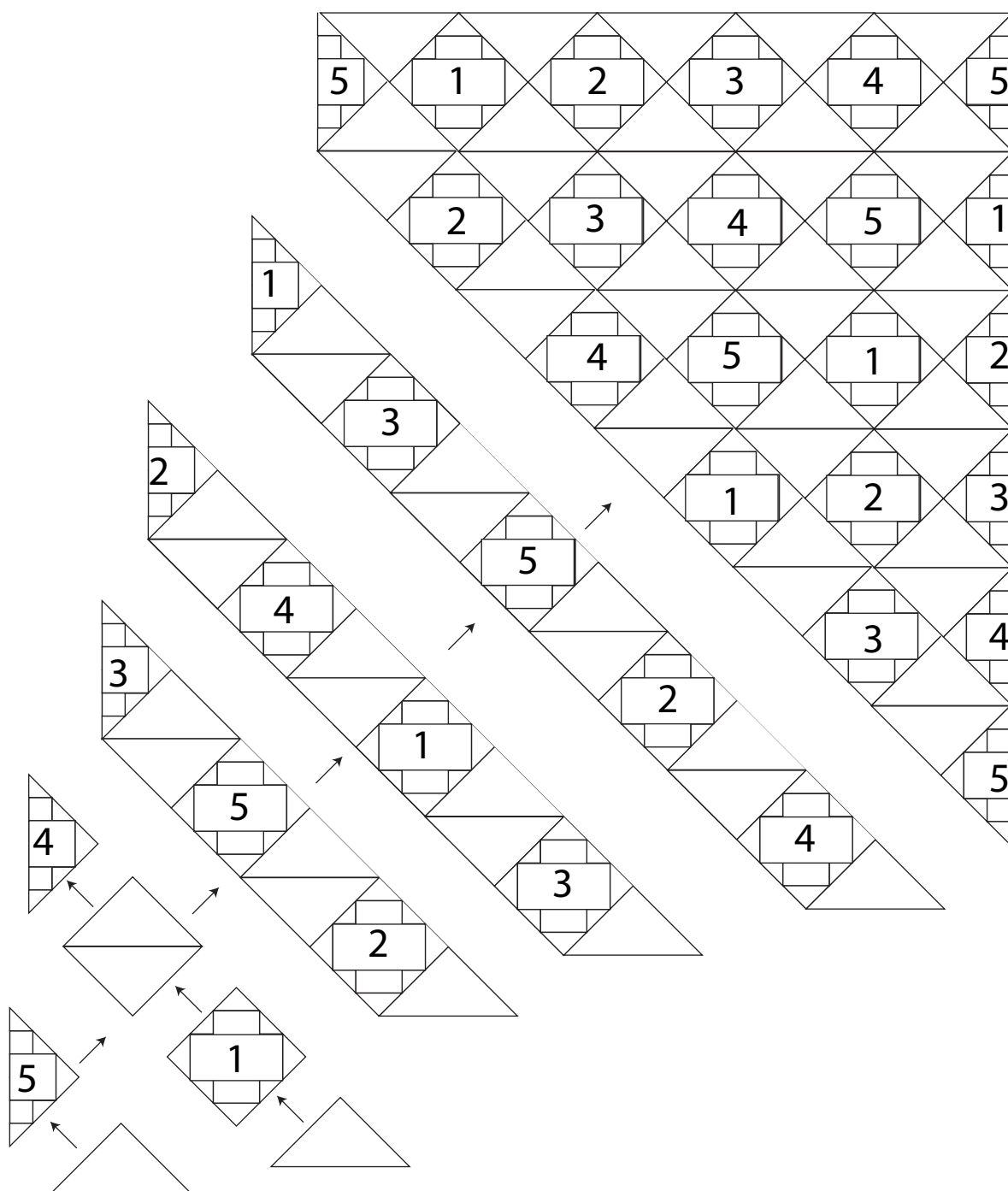


DIAGRAM 7

## QUILT ASSEMBLY

*Sew rights sides together.*

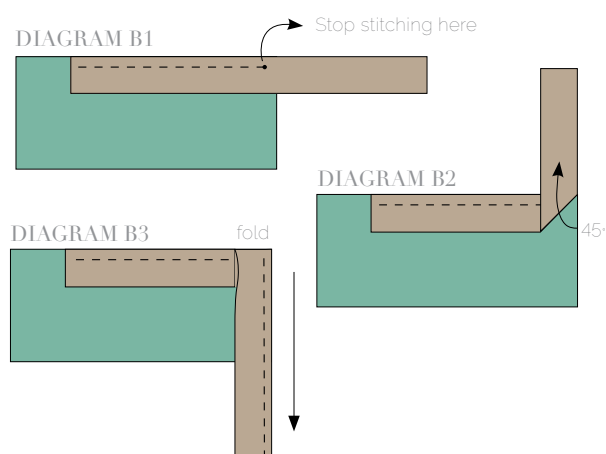
- Place BACKING FABRIC on a large surface wrong side up. Stretch it with masking tape against that surface.
- Place BATTING on top of backing fabric.
- Place TOP on top of the batting with right side facing up. Smooth away wrinkles using your hands.
- Pin all layers together and baste with basting thread, using long stitches. You can also use safety pins to join the layers.
- Machine or hand quilt starting at the center and working towards the corners. Remember that quilting motifs are a matter of personal preference. Have fun choosing yours!
- After you finished, trim excess of any fabric or batting, squaring the quilt to proceed to bind it.

## BINDING

*Sew rights sides together.*

- Cut enough strips  $1\frac{1}{2}$ " wide by the width of the fabric **B** to make a final strip 274" long. Start sewing the binding strip in the middle of one of the sides of the quilt, placing the strip right side down and leaving an approximated 5" tail. Sew with  $\frac{1}{4}$ " seam allowance (using straight stitch), aligning the strip's raw edge with the quilt top's raw edge.
- Stop stitching  $\frac{1}{4}$ " before the edge of the quilt (**DIAGRAM B 1**). Clip the threads. Remove the quilt from under the machine presser foot. Fold the strip in a motion of  $45^\circ$  and upward, pressing with your fingers (**DIAGRAM B2**). Hold this fold with your finger, bring the strip down in line with the next edge, making a horizontal fold that aligns with the top edge of the quilt (**DIAGRAM B3**). Start sewing at  $\frac{1}{4}$ " of the border, stitching all the layers. Do the same in the four corners of the quilt.

- Stop stitching before you reach the last 5 or 6 inches. Cut the threads and remove the quilt from under the machine presser foot. Lay the loose ends of the binding flat along the quilt edge, folding the ends back on themselves where they meet. Press them together to form a crease. Using this crease as the stitching line, sew the two open ends of the binding with right sides together (you can help yourself marking with a pencil if the crease is difficult to see).
- Trim seam to  $\frac{1}{4}$ " and press open. Complete the sewing. Turn binding to back of the quilt, turn raw edge inside and stitch by hand using blind stitch.



[artgalleryfabrics.com](http://artgalleryfabrics.com)

*NOTE: While all possible care has been taken to ensure the accuracy of this pattern, We are not responsible for printing errors or the way in which individual work varies. Please read instructions carefully before starting the construction of this quilt. If desired, wash and iron your fabrics before starting to cut.*

© 2015 Courtesy of Art Gallery Quilts LLC. All Rights Reserved.