

# Sandcastles

{ FEATURING **SUMMERLOVE** COLLECTION }



Art Gallery  
FABRICS

FREE PROJECT SHEET

DESIGNED WITH LOVE BY Pat Bravo



QUILT DESIGNED  
WITH LOVE BY *Pat Bravo*

# Sandcastles

FINISHED SIZE: 84½" × 102½"  
BLOCK SIZE: 18" × 18"

To download the instructions for  
this pattern visit

[artgalleryfabrics.com](http://artgalleryfabrics.com)



## Summerlove

### KIT QUANTITY

SML-101	7/8 yd.	SML-205	5/8 yd.
SML-201	3/4 yd.	SML-203	1 7/8 yd.
SML-103	1 7/8 yd.	SML-209	1/2 yd.
SML-207	1/2 yd.	SML-100	1 7/8 yd.
SML-200	7/8 yd.	SML-107	5/8 yd.
SML-109	1 yd.	SML-210	5/8 yd.
SML-202	7/8 yd.	Backing	7 1/2 yd.
SML-105	1 1/8 yd.		

SUNKISSED



SML-100  
Beyond Bliss Ginger



SML-101  
Daydreaming Sunshine



SML-102  
Swept Away Serenity



SML-103  
Tokens of Love Pink



SML-104  
Passionate Spirit Teal



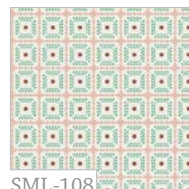
SML-105  
Malibu Kiss



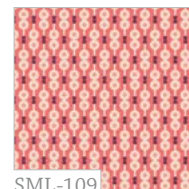
SML-106  
Malibu Haze



SML-107  
Naivety Berry

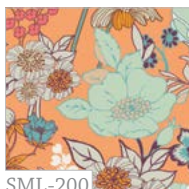


SML-108  
Sweet Days Seashell



SML-109  
Retro Harmony Sugar

BLUE CRUSH



SML-200  
Beyond Bliss Tangerine



SML-201  
Daydreaming Ocean



SML-202  
Swept Away Intensity



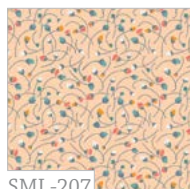
SML-203  
Tokens of Love Aqua



SML-204  
Passionate Spirit Peach



SML-205  
Malibu Sun



SML-207  
Naivety Cream



SML-208  
Sweet Days Mist



SML-209  
Retro Harmony Spice



SML-210  
Retro Harmony Cocoa



QUILT DESIGNED WITH  
LOVE BY PAT BRAVO

# Sandcastles

Featuring **SUMMERLOVE** COLLECTION

FINISHED SIZE: 84½" × 102½"

BLOCK SIZE: 18" × 18"

## FABRIC REQUIREMENTS

Fabric <b>A</b>	SML-101	⅝ yd.
Fabric <b>B</b>	SML-201	⅝ yd.
Fabric <b>C</b>	SML-103	1⅞ yd.
Fabric <b>D</b>	SML-207	½ yd.
Fabric <b>E</b>	SML-200	⅞ yd.
Fabric <b>F</b>	SML-109	1 yd.
Fabric <b>G</b>	SML-202	⅞ yd.
Fabric <b>H</b>	SML-105	1 ⅞ yd.
Fabric <b>I</b>	SML-205	½ yd.
Fabric <b>J</b>	SML-203	1⅞ yd.
Fabric <b>K</b>	SML-209	½ yd.
Fabric <b>L</b>	SML-100	1⅞ yd.
Fabric <b>M</b>	SML-107	⅝ yd.
Fabric <b>N</b>	SML-210	⅝ yd.

### Backing Fabric

SML-102 7½ yd. (suggested)

### Binding Fabric

SML-210 (Fabric **N**) (included)

FABRICS DESIGNED BY PAT BRAVO  
QUILT CONSTRUCTED BY PRISCILLA RAMIREZ FOR  
ART GALLERY FABRICS



## CUTTING DIRECTIONS

¼" seam allowances are included.

### FOR ALL BLOCKS CUT

#### Fabric **F**

Cut 10 (ten) 6½"×6½" squares, subcut twice diagonally into 40 triangles

#### Fabric **M**

Cut 10 (ten) 6½"×6½" squares, subcut twice diagonally into 40 triangles

#### Fabric **K**

Cut 10 (ten) 6½"×6½" squares, subcut twice diagonally into 40 triangles

#### Fabric **D**

Cut 10 (ten) 6½"×6½" squares, subcut twice diagonally into 40 triangles

#### Fabric **C**

80 pink triangle templates

#### Fabric **J**

80 blue triangle templates

#### Fabric **E**

40 BIG triangle templates

#### Fabric **L**

40 BIG triangle templates

#### Fabric **A**

Cut 20 (twenty) 6 ⅞" squares, subcut diagonally into 40 half-square triangles

#### Fabric **B**

Cut 20 (twenty) 6 ⅞" squares, subcut diagonally into 40 half-square triangles

#### Fabric **H**

Cut 30 (thirty) 6 ⅞" squares, subcut diagonally into 60 triangles

#### Fabric **I**

Cut 10 (ten) 6 ⅞" squares, subcut diagonally into 20 triangles

### FOR BORDERS CUT

#### Inner Border

Two 90½" × 2½" strips from fabric **G**\*

Two 76½" × 2½" strips from fabric **G**\*

#### Middle Border

Two 94½" × 1½" strips from fabric **F**\*

Two 78½" × 1½" strips from fabric **F**\*

#### Outer Border

Two 96½" × 3½" strips from fabric **L**\*

Two 84½" × 3½" strips from fabric **L**\*

\* In order to get these long strips you need to join two or more Width Of Fabric strips together.





## BLOCK CONSTRUCTION

Sew all rights sides together with  $\frac{1}{4}$ " seam allowance. Press open.

For this quilt there is one block in two different color combinations. Each block is constructed with 5 UNITS.

### Block Combination 1:

#### PINWHEEL UNIT

- Piece one fabric **F** triangle to one fabric **M** triangle, on the  $6\frac{1}{2}$ " side. Repeat for a total of 4 units. (DIAGRAM 1)
- Rotate units so that fabrics alternate. Join them together. (DIAGRAM 2)
- Set the pinwheel unit aside.

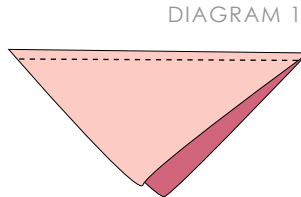


DIAGRAM 1

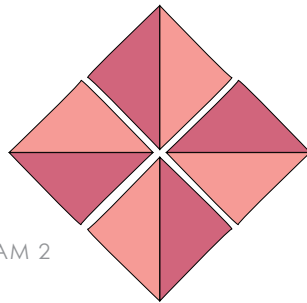


DIAGRAM 2

#### TOP LEFT CORNER UNIT

- Grab one fabric **J** & **E** triangles and position one on top of the other, join them together. (DIAGRAM 3)
- Start sewing at the exact intersection of the two fabrics with a  $\frac{1}{4}$ " seam allowance. (DIAGRAM 4)

DIAGRAM 3

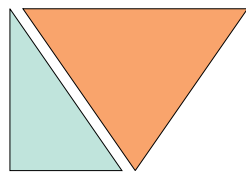
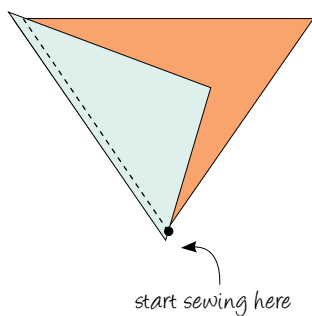


DIAGRAM 4

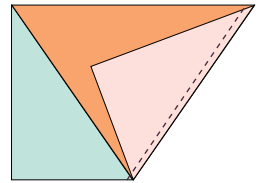


NOTE: You will notice that the tip of the top triangle shows over the edge of the bottom triangle. These are called "dog ears". It is normal when you sew triangles and you will trim them out later.

- Add a fabric **C** triangle on the opposite side.

(DIAGRAM 5)

DIAGRAM 5



- Grab a fabric **I** triangle and sew it to the fabric **J** triangle. Now, sew a fabric **H** triangle to the fabric **C** previously sewn.

(DIAGRAM 6)

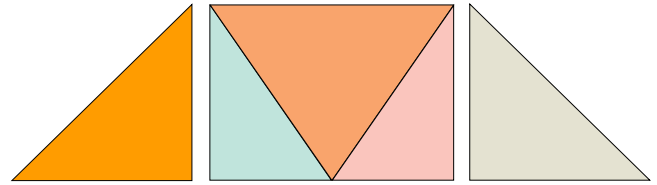
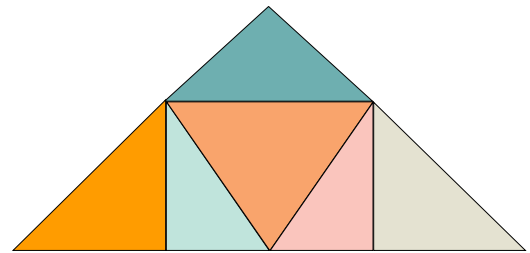


DIAGRAM 6

- Now place a fabric **B** triangle on top of the unit, center and sew in place. Set unit aside.

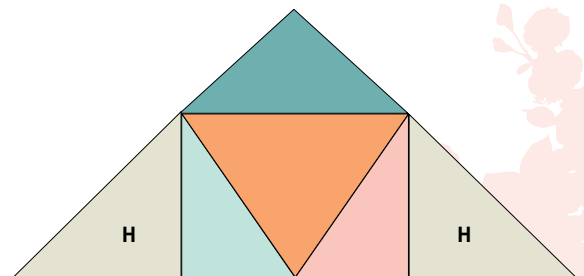


TOP LEFT CORNER UNIT

- Set unit aside.

#### BOTTOM RIGHT CORNER UNIT

- For the bottom right corner unit, follow the same steps, except this time both side triangles should be fabric **H**.



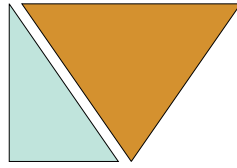
BOTTOM RIGHT CORNER UNIT

- Set unit aside.

## TOP RIGHT & BOTTOM LEFT CORNER UNITS

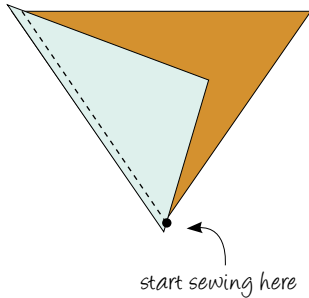
- Grab one fabric **J** & **L** triangles and position one on top of the other, join them together. (DIAGRAM 7)

DIAGRAM 7



- Start sewing at the exact intersection of the two fabrics with a  $\frac{1}{4}$ " seam allowance. (DIAGRAM 8)

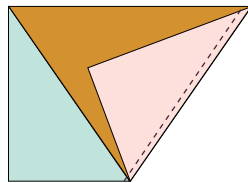
DIAGRAM 8



NOTE: You will notice that the tip of the top triangle shows over the edge of the bottom triangle. These are called "dog ears". It is normal when you sew triangles and you will trim them out later.

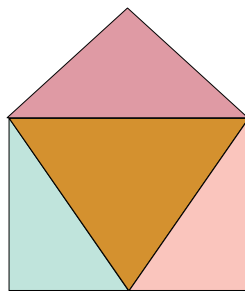
- Add a fabric **C** triangle on the opposite side. (DIAGRAM 9)

DIAGRAM 9



- Now place a fabric **A** triangle on top of the unit, center and sew in place. (DIAGRAM 10)

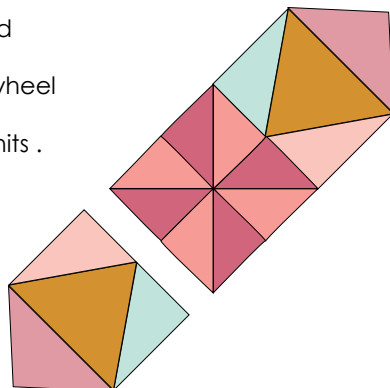
DIAGRAM 10



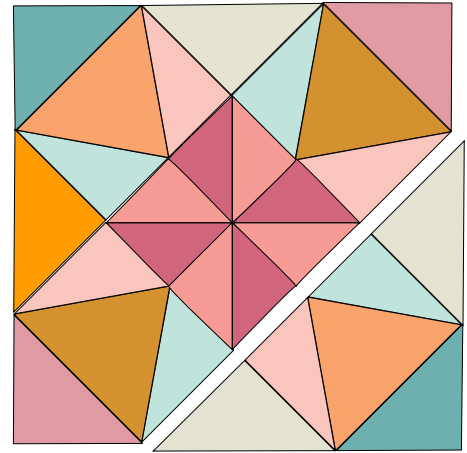
- Set aside and make a second unit just like this one.

- Grab all five units and sew them together, starting with the pinwheel unit and the right & bottom left corner units. (DIAGRAM 11)

DIAGRAM 11



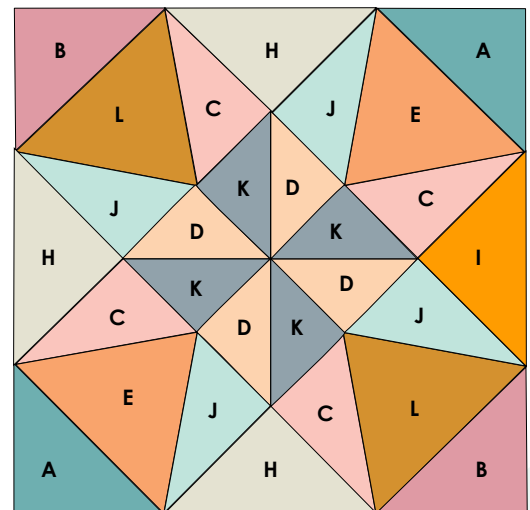
- Proceed to add the two remaining units (top left and bottom right corners).



- Make a total of 10 blocks. Set aside.

### Block Combination 2:

- Follow the same instructions from block combination 1, making sure you follow the next fabric placement.



- Make a total of 10 blocks.





## ASSEMBLING THE TOP

*Sew all right sides together with 1/4" seam allowance. Press open.*

- Begin sewing the first row, alternating blocks between **block combination 1** & **block combination 2**.
- After all rows are sewn, assembly them together maintaining the order shown on the cover pictures.

**NOTE:** Notice that rows 1,3 & 5 start with combination 2 blocks and rows 2 & 4 start with combination 1 blocks.



## BORDERS ASSEMBLY

*Sew all right sides together with 1/4" seam allowance. Press open.*

### For the inner border

- Sew two 90 1/2" x 2 1/2" fabric **G** strips along the left and right sides of the quilt top.
- Sew the other two 76 1/2" x 2 1/2" fabric **G** strips along the top & bottom sides of the quilt top.

### For the middle border

- Sew two 94 1/2" x 1 1/2" fabric **F** strips along the left and right sides of the quilt top.
- Sew the other two 78 1/2" x 1 1/2" fabric **F** strips along the top & bottom sides of the quilt top.

### For the outer border

- Sew two 96 1/2" x 3 1/2" fabric **L** strips along the left and right sides of the quilt top.
- Sew the other two 84 1/2" x 3 1/2" fabric **L** strips along the top & bottom sides of the quilt top.



## QUILT ASSEMBLY

*Sew right sides together.*

- Place BACKING FABRIC on a large surface wrong side up. Stretch it with masking tape against that surface.
- Place BATTING on top of backing fabric.
- Place TOP on top of the batting with right side facing up. Smooth away wrinkles using your hands.
- Pin all layers together and baste with basting thread, using long stitches. You can also use safety pins to join the layers.
- Machine or hand quilt starting at the center and working towards the corners. Remember that quilting motives are a matter of personal preference. Have fun choosing yours!
- After you finished, trim excess of any fabric or batting, squaring the quilt to proceed to bind it.



## BINDING

*Sew right sides together.*

- Cut enough strips 1 1/2" wide by the width of the fabric **N** to make a final strip 386" long. Start sewing the binding strip in the middle of one of the sides of the quilt, placing the strip right side down and leaving an approximated 5" tail. Sew with 1/4" seam allowance (using straight stitch), aligning the strip's raw edge with the quilt top's raw edge.
- Stop stitching 1/4" before the edge of the quilt (DIAGRAM B 1). Clip the threads. Remove the quilt from under the machine presser foot. Fold the strip in a motion of 45° and upward, pressing with your fingers (DIAGRAM B2). Hold this fold with your finger, bring the strip down in line with the next edge, making a horizontal fold that aligns with the top edge of the quilt (DIAGRAM B3). Start sewing at 1/4" of the border, stitching all the layers. Do the same in the four corners of the quilt.
- Stop stitching before you reach the last 5 or 6 inches. Cut the threads and remove the quilt from under the machine presser foot. Lay the loose ends of the binding flat along the quilt edge, folding the ends back on themselves where they meet. Press them together to form a crease. Using this crease as the stitching line, sew the two open ends of the binding with right sides together (you can help yourself marking with a pencil if the crease is difficult to see).
- Trim seam to 1/4" and press open. Complete the sewing. Turn binding to back of the quilt, turn raw edge inside and stitch by hand using blind stitch.

DIAGRAM B1

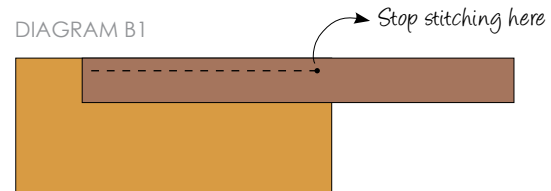


DIAGRAM B2

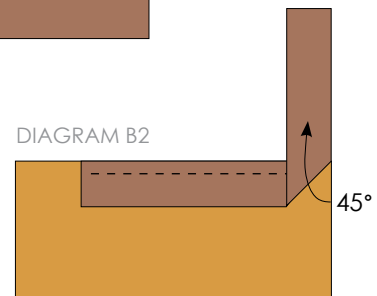
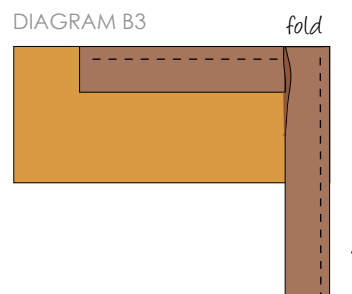


DIAGRAM B3



**CONGRATULATIONS!**

