

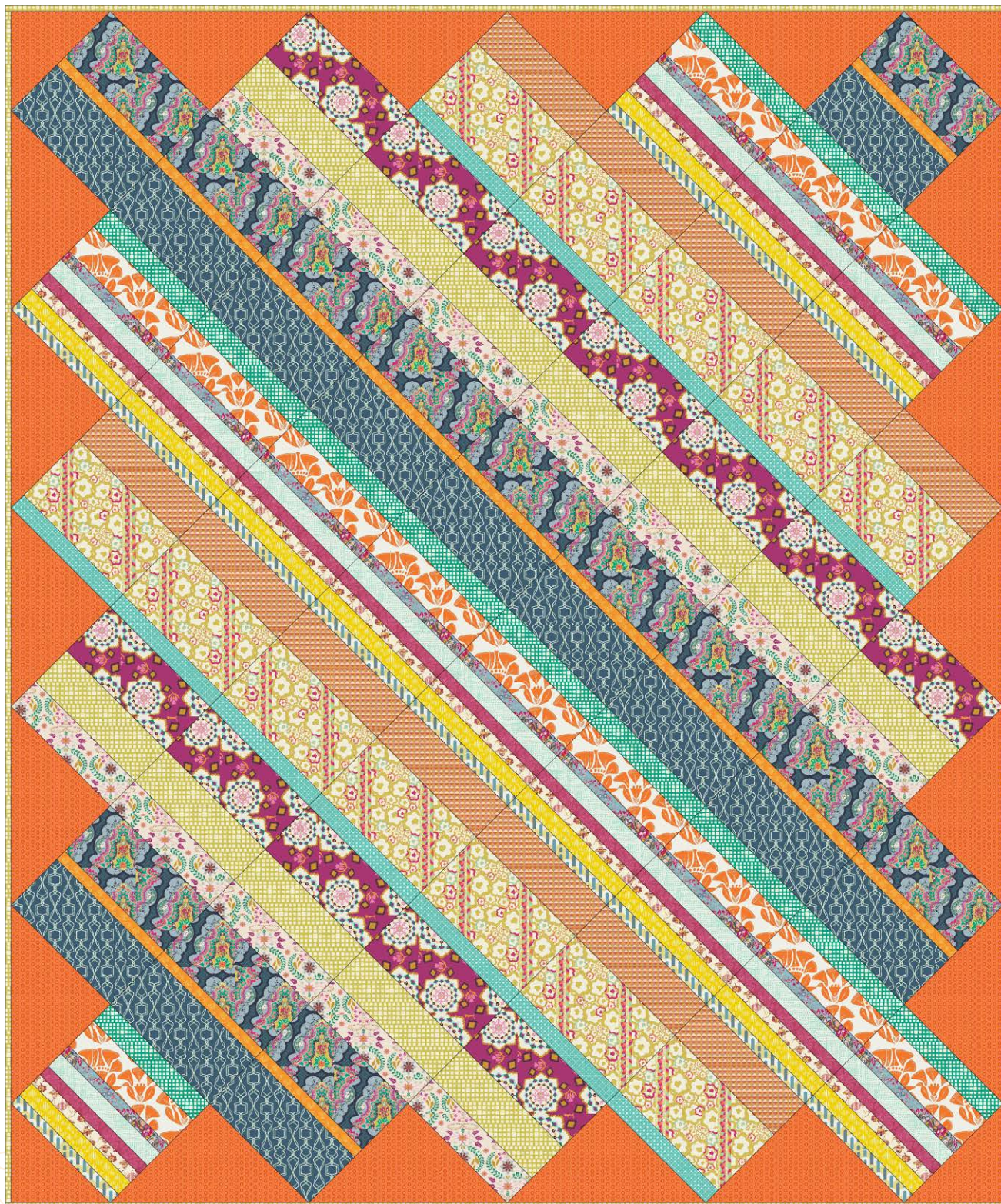


Rustic AUTUMN

FREE QUILT PATTERN



RusticAUTUMN



artgalleryfabrics.com

QUILT DESIGNED BY *AGF studio*

RusticAUTUMN

FINISHED SIZE: 86" × 103"

artgalleryfabrics.com

KIT QUANTITY

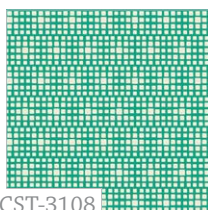
CST-3100	7/8 yd.	BIJ-4702	1/4 yd.
CST-3102	7/8 yd.	BIJ-4704	1/2 yd.
CST-3108	3/8 yd.	BIJ-4708	3/4 yd.
CST-3201	7/8 yd.	LGY-8307	1/4 yd.
RMS-1504	7/8 yd.	NE-119	1/4 yd.
NOR-7601	1/4 yd.	NE-126	1/4 yd.
TL-30021	1/2 yd.	FS-20023	1/4 yd.
TL-30025	3/8 yd.	SPL-30016	1/2 yd.
TL-30029	3/8 yd.	OE-928	1 5/8 yds.



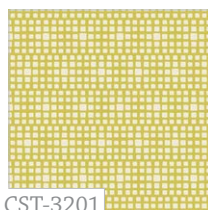
CST-3100
Brit Boutique Royal



CST-3102
Psychedelia Gold



CST-3108
King's Road Turquoise



CST-3201
King's Road Lemon



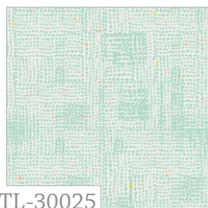
RMS-1504
Pendants Sapphire



NOR-7601
Stellar Skylight



TL-30021
Folklore Terracota



TL-30025
Terrain Cactus



TL-30029
Sand Dunes Golden



BIJ-4702
Caravan's Light Sunset



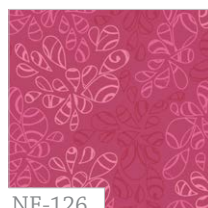
BIJ-4704
Embroidery's
Fortune Rose



BIJ-4708
Dream Catcher Fuchsia



LGY-8307
Décoratifs Lemon



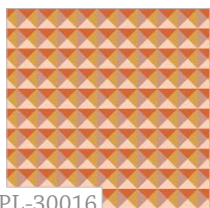
NE-126
Raspberry Tart



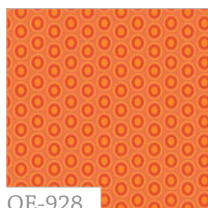
NE-119
Sweet Mango



FS-20023
Meadow Aroma Splash



SPL-30016
Nouveau Geo Coral



OE-928
Tangerine Tango

RusticAUTUMN

FINISHED SIZE: 86" × 103"

BLOCK SIZE: 12½" × 12¾"

To download the instructions for
this pattern visit

artgalleryfabrics.com

QUILT DESIGNED BY
AGF studio

Art Gallery
FABRICS

FABRIC REQUIREMENTS

Fabric A	CST-3100	7/8 yd.
Fabric B	RMS-1504	7/8 yd.
Fabric C	CST-3201	7/8 yd.
Fabric D	SPL-30016	1/2 yd.
Fabric E	NOR-7601	1/4 yd.
Fabric F	TL-30029	3/8 yd.
Fabric G	NE-126	1/4 yd.
Fabric H	FS-20023	1/4 yd.
Fabric I	CST-3108	3/8 yd.
Fabric J	NE-119	1/4 yd.
Fabric K	BIJ-4704	1/2 yd.
Fabric L	BIJ-4708	3/4 yd.
Fabric M	CST-3102	3/4 yd.
Fabric N	LGY-8307	1/4 yd.
Fabric O	BIJ-4702	1/4 yd.
Fabric P	TL-30025	3/8 yd.
Fabric Q	TL-30021	1/2 yd.
Fabric R	OE-928	1 5/8 yd.

Backing Fabric

CST-3102 9 yd. (suggested)

Binding Fabric

CST-3201 (Fabric **C**) (included)

CUTTING DIRECTIONS

¼" seam allowances are included.

FOR ALL BLOCKS CUT

Thirteen (13) 12 ½" x 6" rectangles from fabric **A**

Thirteen (13) 12 ½" x 6" rectangles from fabric **B**

twelve (12) 12 ½" x 4 ¼" rectangles from fabric **C**

twelve (12) 12 ½" x 4 ¼" rectangles from fabric **D**

twelve (12) 12 ½" x 2" rectangles from fabric **E**

Thirteen (13) 12 ½" x 2" rectangles from fabric **F**

Thirteen (13) 12 ½" x 1 ½" rectangles from fabric **G**

Thirteen (13) 12 ½" x 1 ½" rectangles from fabric **H**

Thirteen (13) 12 ½" x 2 ½" rectangles from fabric **I**

Thirteen (13) 12 ½" x 1 ½" rectangles from fabric **J**

Twelve (12) 12 ½" x 3 ½" rectangles from fabric **K**

Twelve (12) 12 ½" x 5 ¾" rectangles from fabric **L**

Twelve (12) 12 ½" x 7 ¼" rectangles from fabric **M**

Thirteen (13) 12 ½" x 1 ½" rectangles from fabric **N**

Thirteen (13) 12 ½" x 1 ½" rectangles from fabric **O**

Thirteen (13) 12 ½" x 2" rectangles from fabric **P**

Thirteen (13) 12 ½" x 3 ½" rectangles from fabric **Q**

Five (5) 18 1/8" squares from fabric **R**

cut twice diagonally for a total of eighteen triangles

Two (2) 9 3/8" squares from fabric **R**

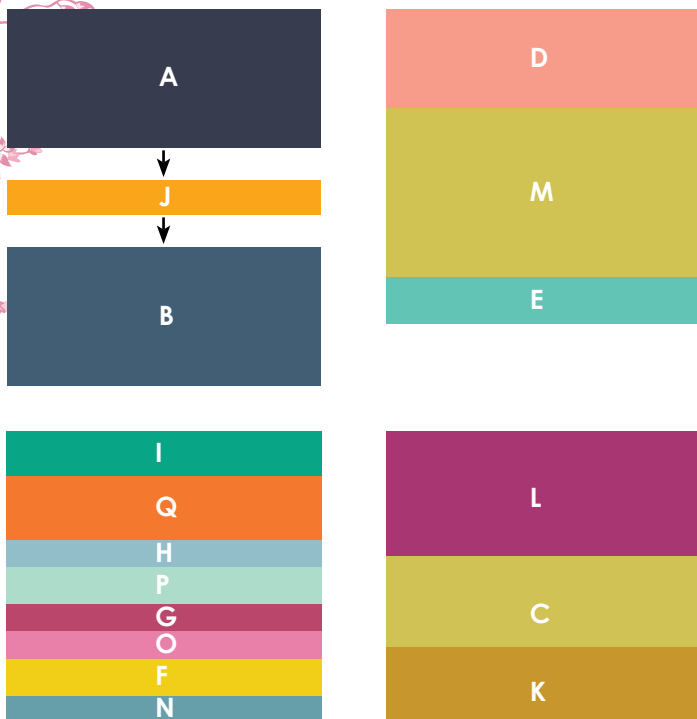
cut once diagonally for a total of four triangles

BLOCK CONSTRUCTION

Sew all rights sides together with $\frac{1}{4}$ " seam allowance. Press open.

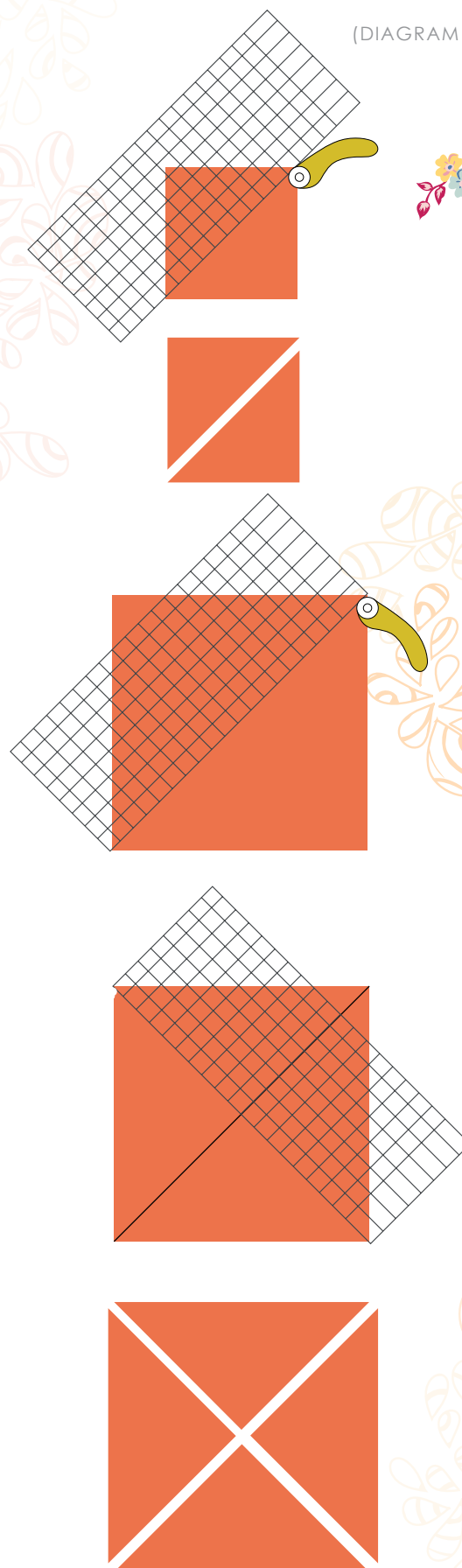
- There are four different block combinations in this quilt, but they are constructed in the same manner.
- Begin with block **a**
- Grab one rectangle from fabric **A**, one rectangle from fabric **J**, one rectangle from fabric **B**.
- Sew them in the order **AJB** on the long sides of the rectangles. (DIAGRAM 1)
- Repeat the previous process until you finish thirteen identical blocks (block **a**).
- Continue with block **b**
- Sew them in the order **IQHPGOFN** (DIAGRAM 1)
- Repeat the previous process until you finish thirteen identical blocks (block **b**).
- Continue with block **c**
- Sew them in the order **DME** (DIAGRAM 1)
- Repeat the previous process until you finish twelve identical blocks (block **c**).
- Continue with block **d**
- Sew them in the order **LCK** (DIAGRAM 1)
- Repeat the previous process until you finish twelve identical blocks (block **d**).

(DIAGRAM 1)



- Take the two $9 \frac{3}{8}$ " squares from fabric **R** make a diagonal cut using a ruler and a cutter to end up with two triangles. (DIAGRAM 2)
- With the five $18 \frac{1}{8}$ " squares from fabric **R** make two diagonal cuts (DIAGRAM 2)

(DIAGRAM 2)

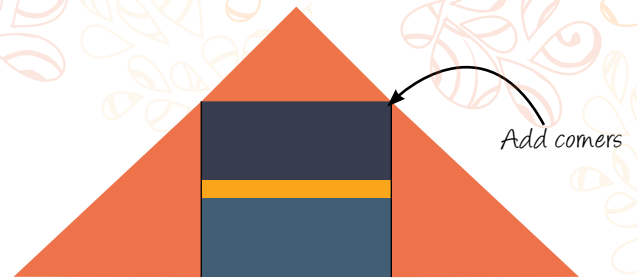
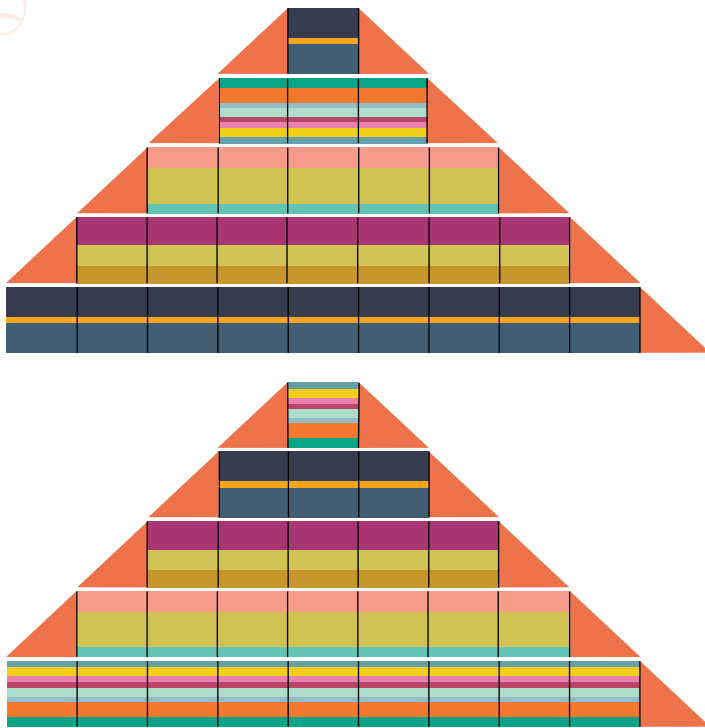


ASSEMBLING THE TOP

Sew all right sides together with $\frac{1}{4}$ " seam allowance. Press open.

- To assemble this quilt top use the cover photo as an aid. It is easier to assemble this quilt following a diagonal direction. Go from top following a horizontal order. Begin with the first row sewing it on the long sides.
- start constructing the rows by attaching the identical blocks together.
- There are three different rows made with block **a**.
- The first one is just one block, for the second row attach nine blocks together, for the third one attach three blocks together.
- There are three different rows with block **b** as well, the first one is just one block, for the second row attach nine blocks together, for the third one attach three blocks together.
- There are two different rows made with block **c**.
- For the first one attach five blocks together and for the second row attach seven blocks together.
- There are two different rows made with block **d** as well, for the first one attach five blocks together and for the second row attach seven blocks together.
- Start attaching rows together using the cover photo for the right order.
- start attaching row one and two making sure that rows are align.
- Continue with the second row, third row, fourth row, and so on until you finish the ten rows.
- leave the corners (small triangles) for the end, when your done with all the diagonal lines add one of the four triangles to each corner side. Construct all diagonal rows first and then attach them to each other making sure the seams match.

(DIAGRAM 3)



- Press seams open. (DIAGRAM 3)

QUILT ASSEMBLY

Sew right sides together.

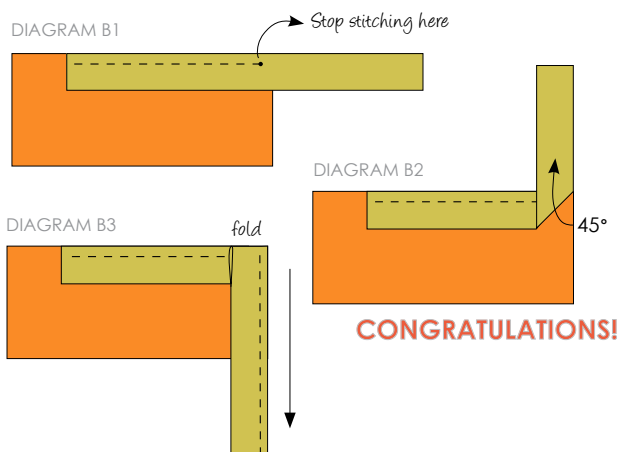
- Place BACKING FABRIC on a large surface wrong side up. Stretch it with masking tape against that surface.
- Place BATTING on top of backing fabric.
- Place TOP on top of the batting with right side facing up. Smooth away wrinkles using your hands.
- Pin all layers together and baste with basting thread, using long stitches. You can also use safety pins to join the layers.
- Machine or hand quilt starting at the center and working towards the corners. Remember that quilting motives are a matter of personal preference. Have fun choosing yours!
- After you finished, trim excess of any fabric or batting, squaring the quilt to proceed to bind it.

BINDING

Sew right sides together.

- Cut enough strips $1\frac{1}{2}$ " wide by the width of the fabric **C** to make a final strip 386" long. Start sewing the binding strip in the middle of one of the sides of the quilt, placing the strip right side down and leaving an approximated 5" tail. Sew with $\frac{1}{4}$ " seam allowance (using straight stitch), aligning the strip's raw edge with the quilt top's raw edge.
- Stop stitching $\frac{1}{4}$ " before the edge of the quilt (DIAGRAM B 1). Clip the threads. Remove the quilt from under the machine presser foot. Fold the strip in a motion of 45° and upward, pressing with your fingers (DIAGRAM B2). Hold this fold with your finger, bring the strip down in line with the next edge, making a horizontal fold that aligns with the top edge of the quilt (DIAGRAM B3). Start sewing at $\frac{1}{4}$ " of the border, stitching all the layers. Do the same in the four corners of the quilt.

- Stop stitching before you reach the last 5 or 6 inches. Cut the threads and remove the quilt from under the machine presser foot. Lay the loose ends of the binding flat along the quilt edge, folding the ends back on themselves where they meet. Press them together to form a crease. Using this crease as the stitching line, sew the two open ends of the binding with right sides together (you can help yourself marking with a pencil if the crease is difficult to see).
- Trim seam to $\frac{1}{4}$ " and press open. Complete the sewing. Turn binding to back of the quilt, turn raw edge inside and stitch by hand using blind stitch.



Feel the difference

For more free patterns visit:

artgalleryfabrics.com

NOTE: While all possible care has been taken to ensure the accuracy of this pattern, we are not responsible for printing errors or the way in which individual work varies. Please read instructions carefully before starting the construction of this quilt. If desired, wash and iron your fabrics before starting to cut.

© 2013 Courtesy of Art Gallery Quilts LLC.
All Rights Reserved.

