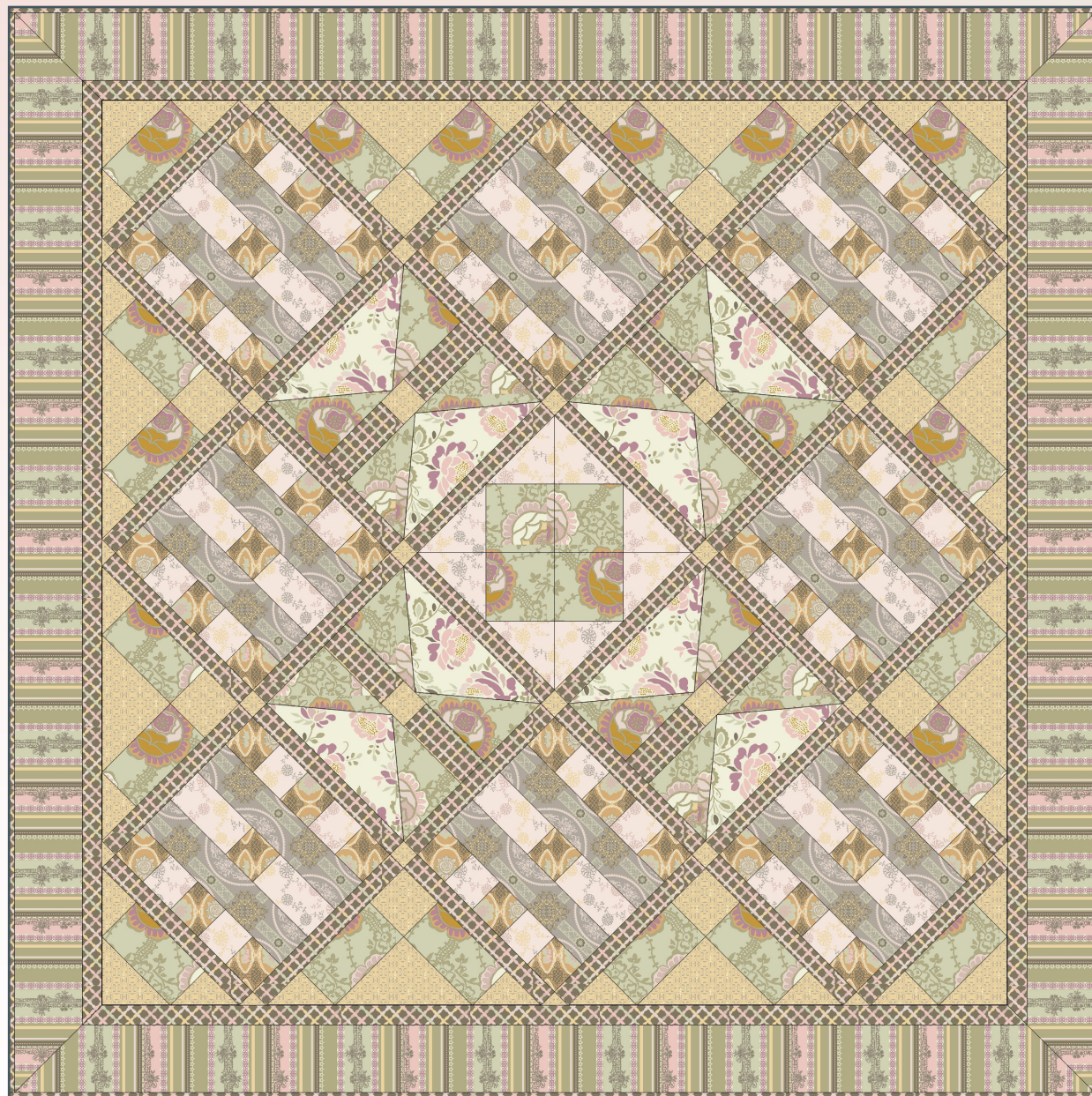


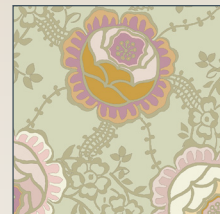
Romantic Roses

Featuring "DASHING ROSES" Collection



Free Project Sheet

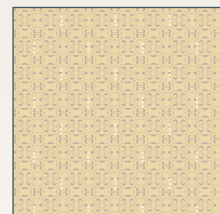
Designed by Patricia Bravo - 56" by 56"



DR-400



DR-401



DR-407



DR-406



DR-405



DR-404



DR-403



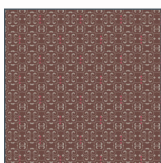
DR-402



DR-300



DR-301



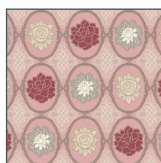
DR-307



DR-306



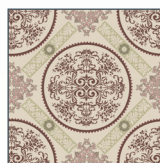
DR-305



DR-304



DR-303



DR-302



© 2008 Courtesy of Art Gallery Quilts LLC. All rights reserved

570 Golden Beach Dr., Golden Beach, FL 33160. TEL: (888) 420-5399 FAX: (425) 799-6103

for more fabrics and projects visit our website www.artgalleryfabrics.com

Romantic Roses

Finished Size: 56" x 56"

Block Size: 10"

Quilt designed by Patricia Bravo for *Art Gallery* FABRICS

Fabric Requirements: "DASHING ROSES" COLLECTION

Fabric A: 3/8 yd. of **DR-404**

Fabric B: 1/2 yd. of **DR-405**

Fabric C: 7/8 yd. of **DR-407**

Fabric D: 5/8 yd. of **DR-401**

Fabric E: 1/2 yd. of **DR-402**

Fabric F: 1 yd. of **DR-400**

Fabric G: 1 yd. of **DR-406**

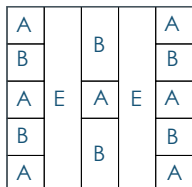
Fabric H: 1 yd. of **DR-403**

*The estimate for the fabrics of the borders and binding assumes that long strips are pieced.
All seam allowances are 1/4". Please read all directions before beginning and press carefully after each seam.*

Cutting Directions: This quilt consist of 3 blocks:

For each block 1 cut: (8 blocks total)

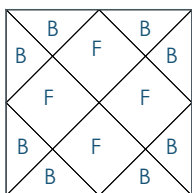
Seven (7) 2 1/2" squares from fabric A.
Four (4) 2 1/2" squares from fabric B.
Two (2) 4 1/2" by 2 1/2" strips from fabric B.
Two (2) 10 1/2" by 2 1/2" strips from fabric E.



BLOCK 1 Diagram

For each block 3 cut: (1 block total)

Two (2) 6 1/4" squares from fabric B. Cut them twice diagonally.
Four (4) 4" squares from fabric F.



BLOCK 3 Diagram

For sashing cut

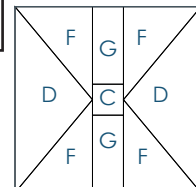
Thirty-six (36) 10 1/2" by 1 1/2" strips from fabric G.
Twelve (12) 1 1/2" squares from fabric C.
Three (3) 2 5/8" squares from fabric C. Cut them twice diagonally.

Important Hint for fabric placement:

Letters shown in color blue inside the Block Diagrams represent the templates or patches but ALSO represent the fabric styles explained in "FABRIC REQUIREMENTS" (notice they are also represented in the same color).

For each block 2 cut: (4 blocks total)

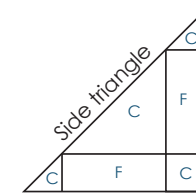
Two (2) 6" by 5" strips from fabric F. Cut them once diagonally.
One (1) 2 1/8" square from fabric C.
Two (2) 4 5/8" by 2 1/8" strips from fabric G.
Two (2) 11 3/8" by 4 3/4" strip from fabric D.



BLOCK 2 Diagram

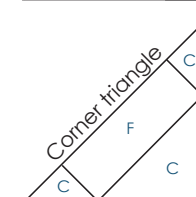
For each side triangle unit cut: (8 units total)

One (1) 3" square from fabric C.
Two (2) 5 1/2" by 3" strips from fabric F.
One (1) 3 3/8" square from fabric C. Cut it once diagonally.
One (1) 5 7/8" square from fabric C. Cut it once diagonally.



For each corner triangle unit cut: (4 units total)

One (1) 5 1/2" by 3" strip from fabric F.
One (1) 3 3/8" square from fabric C. Cut it once diagonally.
One (1) 6 1/4" square from fabric C. Cut it twice diagonally.



For borders cut

Two (2) 47 1/8" by 1 1/2" strips from fabric G.
Two (2) 49 1/8" by 1 1/2" strips from fabric G.
Four (4) 60" by 3 1/2" strips from fabric H.

Block Construction: (right sides together)

For each block 1, piece alternative 2 1/2" squares, from fabrics A and B, until you have five together, as shown in BLOCK 1 Diagram. Make another like this. Join together two fabric B 4 1/2" by 2 1/2" strips with one fabric A 2 1/2" square in the middle. Piece the block inserting two fabric E strips in the middle as shown in the BLOCK 1 Diagram. **Make 8 Blocks.**

For each block 2, Draw a vertical line in the center of the fabric D strip (having the strip positioned horizontally in front of you). Now, draw a diagonal line on the same strip from one corner to the matching top vertical line of the strip, as if you were doing a flying goose unit. Draw another diagonal line on the opposite side (revealing a triangle). Cut on those diagonal lines. Position a fabric F triangle on top of a fabric D triangle (right sides facing together), aligning the longest side of the fabric F triangle with one of the short sides of the fabric D triangle. Sew with a 1/4" seam allowance along the side. Press open and repeat the process on the opposite side of the fabric D triangle. For the center unit of the block, piece two fabric G strips with one fabric C square in the middle. Join these 3 units together, following block 2 diagram. Trim "dog ears." **Make four blocks.**

For each block 3, piece together two quarter square triangles from fabric B making a bigger triangle, (as shown in BLOCK 3 Diagram). Make four units like this. Now, join together four squares from fabric F as if a four patch block. Sew, each fabric B unit to each side of the fabric F unit. Trim "dog ears". **Make 1 Block.**

For each side triangle, sew one fabric C 3 3/8" half square triangle to the shorter side of a fabric F strip and later to one fabric C 3" square. Sew one fabric C 5 7/8" half square triangle to the longest side of a fabric F strip. Finish adding another fabric C 3 3/8" half square triangle on the corner (as shown in the diagram). **Make 8 units.**

For each corner triangle, sew one fabric C 3 3/8" half square triangle to the shorter side of a fabric F strip and later to another fabric C 3 3/8" half square triangle. Finish adding another fabric C 6 1/4" quarter square triangle on the corner (as shown to the right). **Make 4 units.**

Quilt Top Assembly: (right sides together)

For first row: Sew two fabric C small triangles to the ends of one fabric G strip. Follow adding the units for the second row as shown on the picture on the front cover, alternating between the blocks and the sashing. Complete all the rows in the same way. Then, piece all the rows together as shown on the picture on the cover. Add the four corner units at the end.

For the inner border, Join, enough fabric G strips in order to make a 47 1/8" strip. Make another long strip like this. Sew them along the top and the bottom sides of the top with a 1/4" seam allowance. Press open. Join, enough fabric G strips in order to make a 49 1/8" strip. Make another long strip like this. Sew them along the remaining sides of the top with a 1/4" seam allowance. Press open.

For the outer border, Join, enough fabric H strips in order to make a 60" strip. Make another three strips like this. Sew them along the four sides of the top with mitered corners and with a 1/4" seam allowance. Press open.

Layer, quilt and single bind (1 1/2" strips) with fabric G as desired.

While all possible care has been taken to ensure the accuracy of this pattern, we are not responsible for printing errors or the way in which individual work varies.



2008 Courtesy of Art Gallery Quilts LLC. All rights reserved
570 Golden Beach Dr., Golden Beach, FL 33160. TEL: (305) 420-5399 FAX: (425) 799-6103

www.artgalleryfabrics.com