

Play





AGFstudio

QUILT DESIGNED BY AGF STUDIO

Heart Melodies

FABRICS DESIGNED BY AGF STUDIO

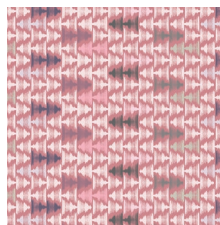


COLOR OPTION

INDIE ACOUSTIC



HME-70400
HEART FIELDS FOREVER



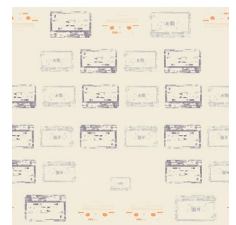
HME-70401
UP TEMPO SOFT



HME-70402
PETAL STRINGS ROMANCE



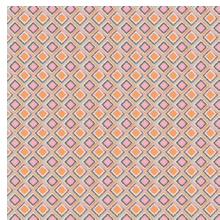
HME-70403
TUNER TUMBLE BASS



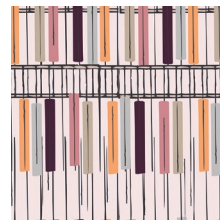
HME-70404
CASSETTE 'N' LACE



HME-70405
REMASTERING PLUM



HME-70406
BASS WAVES BRIGHT



HME-70407
THE KEY OF PASTEL



HME-70408
PAINT IT SUBTLE

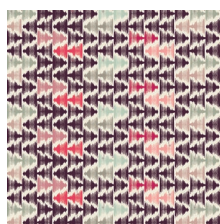


HME-70409
SILHOUETTE LANE

ALTERNATIVE BALLAD



HME-80400
HEART FIELDS ALWAYS



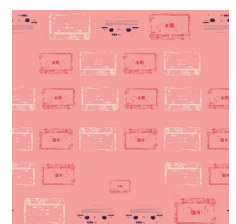
HME-80401
UP TEMPO DEPTH



HME-80402
PETAL STRINGS PASSION



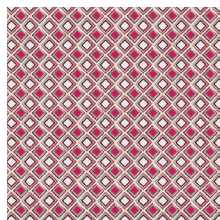
HME-80403
TUNER TUMBLE VIOLA



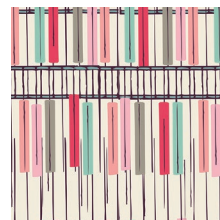
HME-80404
CASSETTE 'N' LOVE



HME-80405
REMASTERING AQUA



HME-80406
BASS WAVES BOLD



HME-80407
THE KEY OF HUE



HME-80408
PAINT IT POTENT



HME-80409
SILHOUETTE ROAD



FEEL THE DIFFERENCE © 2015 Courtesy of Art Gallery Quilts LLC. All Rights Reserved.

FINISHED SIZE | 45" x 70"

FABRIC REQUIREMENTS

Fabric A	HME-70408	1 yd.
Fabric B	HME-70409	1 yd.
Fabric C	HME-70401	$\frac{3}{4}$ yd.
Fabric D	HME-70404	$\frac{5}{8}$ yd.
Fabric E	HME-80405	$\frac{7}{8}$ yd.
Fabric F	DEN-D-5000	1 $\frac{1}{4}$ yd.
Fabric G	DEN-L-4000	1 yd.
Fabric H	DEN-S-2003	1 $\frac{1}{4}$ yd.
Fabric I	DEN-S-2004	1 $\frac{3}{8}$ yd.
Fabric J	PE-419	$\frac{1}{2}$ yd.

BACKING FABRIC

HME-70408 3½ yds. (*Suggested*)

BINDING FABRIC

DEN-L-4000 (Fabric **G**) *(included)*

CUTTING DIRECTIONS

*¼" seam allowances are included.
WOF means width of fabric.*

Four (4) 4½' x WOF strips from fabric **A**

Three (3) 4½' x 16½' strips from fabric **A**

One (1) 9½" square from fabric **A**

Four (4) 4½' x WOF strips from fabric **B**

Two (2) 4½' x 16½' strips from fabric **B**

One (1) 9½" square from fabric **B**

Two (2) 4½" x WOF strips from fabric **C**

One (1) 4½' x 16½' strips from fabric **C**

One (1) 9½" square from fabric **C**

Two (2) 4½" x WOF Strips from fabric **D**

One (1) 4½' X 16½' Strips from fabric **D**

One (1) 9½" square from fabric **D**

Three (3) 4½' x WOF strips from fabric **E**

Three (3) 4½' x 16½' strips from fabric **E**

One (1) 9½" square from fabric **E**

Five (5) 4½" x WOF strips from fabric **F**



Two (2) $4\frac{1}{2}' \times 16\frac{1}{2}'$ strips from fabric **F**

Two (2) 9½" squares from fabric **F**

Three (3) 4½" x WOF strips from fabric **G**

Three (3) 4½" x 16½" strips from fabric **G**

Five (5) 4½' x WOF strips from fabric **H**

Three (3) 4½" x 16½" strips from fabric **H**

One (1) 9½" squares from fabric **H**

One (1) 5½" x 9½" strip from fabric **H**

Six (6) 4½" x WOF strips from fabric I

Four (4) 4½' x 16½' strips from fabric I

One (1) 9½" squares from fabric I

One (1) 5½' x 9½' strip from fabric |

Two (2) 4½" x WOF strips from fabric **J**

One (1) 4½' x 16½' strips from fabric J

CONSTRUCTION

Sew all rights sides together with ¼" seam allowance.

- There are five WOF strips combinations that will be followed by a 5' 45° angle cut in order to complete this quilt top construction and six 16' strips combinations as well.
- Starting with the WOF strips, attach combination **a** following the diagram below for strips placement. Make two of this strips combination.
- Start attaching WOF strips in the order **IAHB**
- After all the strips are attached together cut three 5' strips starting from right to left in a 45° angle. Set aside.
- Use the other combination **a** strips attachment that was left to cut two 5' strips starting from left to right in a 45° angle. Set aside.

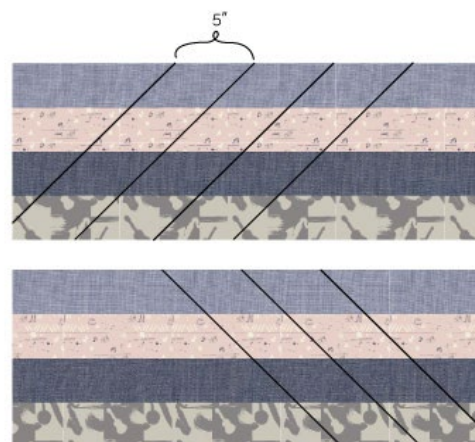


DIAGRAM 1

- Make two pieces for combination **b** following the diagram below for strips placement.
- Start attaching WOF strips in the order **CGFD**
- After all the strips are attached together cut three 5" strips starting from left to right in a 45° angle. Set aside.
- Use the other combination **b** strips attachment that was left to cut two 5" strips starting from right to left in a 45° angle. Set aside.

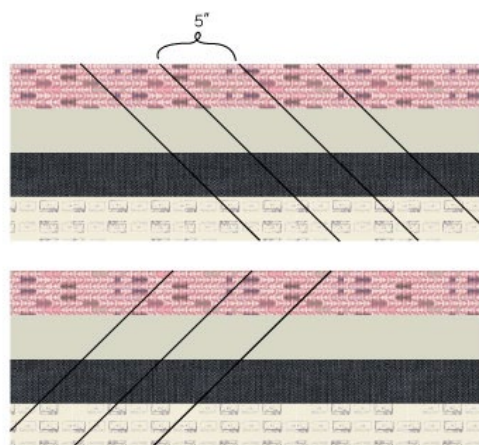


DIAGRAM 2

- Make two pieces for combination **c** following the diagram below for strips placement.
- Start attaching WOF strips in the order **EIBH**
- After all the strips are attached together cut three 5" strips starting from left to right in a 45° angle. Set aside.
- Use the other combination **c** strips attachment that was left to cut two 5" strips starting from right to left in a 45° angle. Set aside.

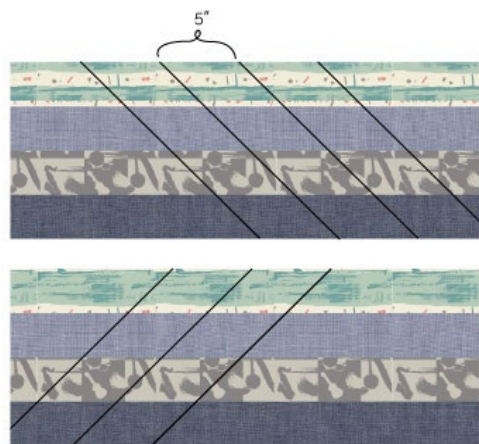


DIAGRAM 3

- Make two pieces for combination **d** following the diagram below for strips placement.
- Start attaching WOF strips in the order **AGIF**
- After all the strips are attached together cut three 5" strips starting from right to left in a 45° angle. Set aside.
- Use the other combination **d** strips attachment that was left to cut four 5" strips starting from left to right in a 45° angle. Set aside.

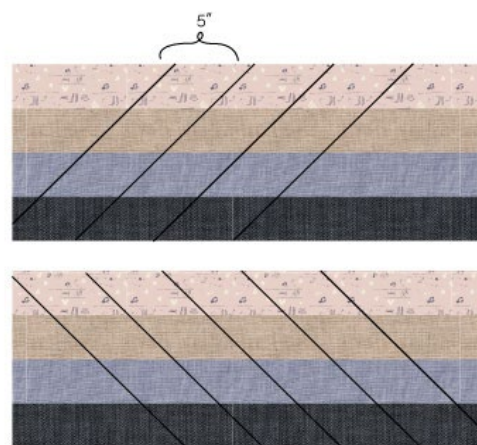


DIAGRAM 4

- Make one piece for combination **e** following the diagram below for strips placement.
- Start attaching WOF strips in the order **FEHG**
- After all the strips are attached together cut one 5" strip from left to right and one 5" strip from right to left in a 45° angle. Set aside.

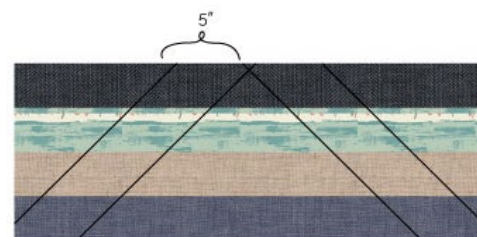


DIAGRAM 5

- Now that you are done with the WOF strips move to the 16" strips combinations.
- Attach combination **f** following the diagram below for strips placement.
- Attaching 16" strips in the order **BHAE**
- After all the strips are attached together cut one 5" strip starting from left to right in a 45° angle. Set aside.



DIAGRAM 6

- Attach combination **g** following the diagram below for strips placement.
- Attaching 16" strips in the order **IFGC**
- After all the strips are attached together cut one 5" strip starting from left to right in a 45° angle. Set aside.

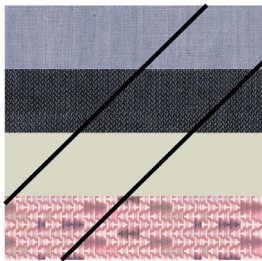


DIAGRAM 7

- Attach combination **h** following the diagram below for strips placement.
- Attaching 16" strips in the order **DGEF**
- After all the strips are attached together cut one 5" strip starting from left to right in a 45° angle. Set aside.

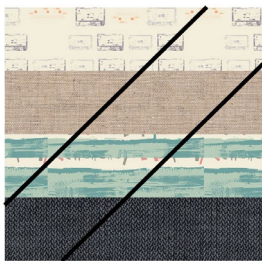


DIAGRAM 8

- Attach combination **i** following the diagram below for strips placement.
- Attaching 16" strips in the order **HIGA**
- After all the strips are attached together cut one 5" strip starting from left to right in a 45° angle. Set aside.

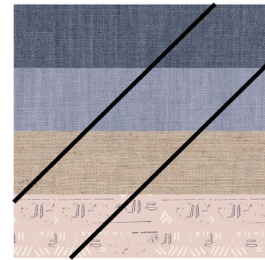


DIAGRAM 9

- Attach combination **J** following the diagram below for strips placement.
- Attaching 16" strips in the order **BCGA**
- After all the strips are attached together cut one 5" strip starting from right to left in a 45° angle. Set aside.

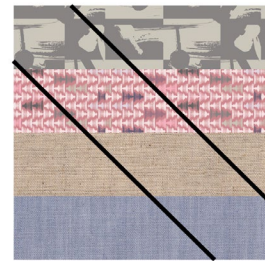


DIAGRAM 10

- Attach combination **k** following the diagram below for strips placement.
- Attaching 16" strips in the order **IHA E**
- After all the strips are attached together cut one 5" strip starting from right to left in a 45° angle. Set aside.

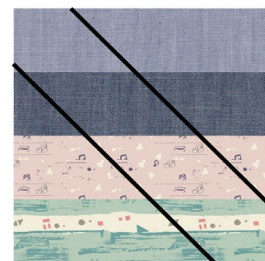


DIAGRAM 11

- Take two opposite strips from combination a, align them together making sure that every seam matches and attach them together.
- Trim the strips into a 17½" rectangle. Set aside.
- Repeat the previous steps with the rest of the strips combinations.
- For fabric placement follow the cover picture.

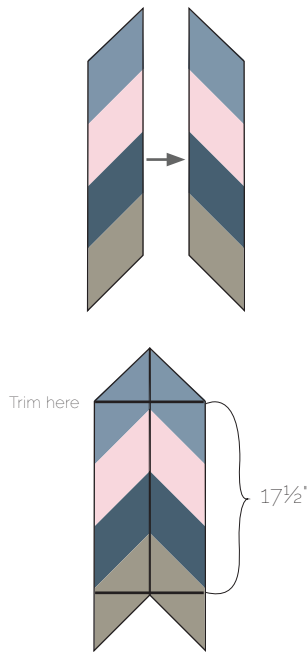


DIAGRAM 12

ASSEMBLING THE TOP

Sew all rights sides together with 1/4" seam allowance. Press open.

- There are five rows needed for the construction of this quilt top.
- Three of the rows will be made of five of the chevron strip block and the other two will be made of five $9\frac{1}{2}$ " squares.
- Follow the cover picture for Rows placement and sew them together alternating the order of the rows,
- Start with the chevron blocks row followed by the squares row .
- Press seams open.



QUILT ASSEMBLY

Sew rights sides together.

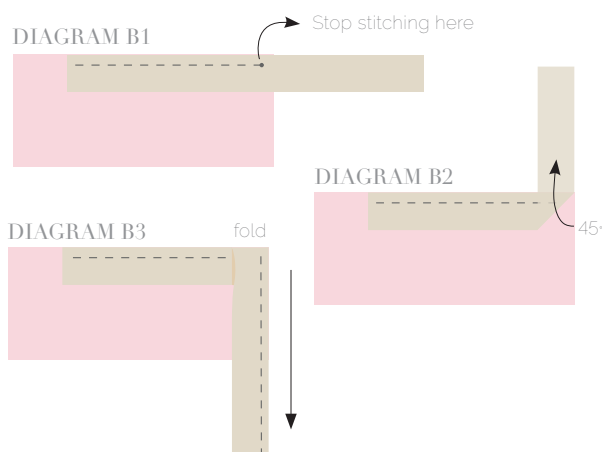
- Place BACKING FABRIC on a large surface wrong side up. Stretch it with masking tape against that surface.
- Place BATTING on top of backing fabric.
- Place TOP on top of the batting with right side facing up. Smooth away wrinkles using your hands.
- Pin all layers together and baste with basting thread, using long stitches. You can also use safety pins to join the layers.
- Machine or hand quilt starting at the center and working towards the corners. Remember that quilting motifs are a matter of personal preference. Have fun choosing yours!
- After you finished, trim excess of any fabric or batting, squaring the quilt to proceed to bind it.

BINDING

Sew right sides together.

- Cut enough strips $1\frac{1}{2}$ ' wide by the width of the fabric **G** to make a final strip 245' long. Start sewing the binding strip in the middle of one of the sides of the quilt, placing the strip right side down and leaving an approximated 5' tail. Sew with $\frac{1}{4}$ ' seam allowance (using straight stitch), aligning the strip's raw edge with the quilt top's raw edge.
- Stop stitching $\frac{1}{4}$ ' before the edge of the quilt (**DIAGRAM B1**). Clip the threads. Remove the quilt from under the machine presser foot. Fold the strip in a motion of 45° and upward, pressing with your fingers (**DIAGRAM B2**). Hold this fold with your finger, bring the strip down in line with the next edge, making a horizontal fold that aligns with the top edge of the quilt (**DIAGRAM B3**). Start sewing at $\frac{1}{4}$ ' of the border, stitching all the layers. Do the same in the four corners of the quilt.

- Stop stitching before you reach the last 5 or 6 inches. Cut the threads and remove the quilt from under the machine presser foot. Lay the loose ends of the binding flat along the quilt edge, folding the ends back on themselves where they meet. Press them together to form a crease. Using this crease as the stitching line, sew the two open ends of the binding with right sides together (you can help yourself marking with a pencil if the crease is difficult to see).
- Trim seam to $\frac{1}{4}$ ' and press open. Complete the sewing. Turn binding to back of the quilt, turn raw edge inside and stitch by hand using blind stitch.



artgalleryfabrics.com

NOTE: While all possible care has been taken to ensure the accuracy of this pattern, We are not responsible for printing errors or the way in which individual work varies. Please read instructions carefully before starting the construction of this quilt. If desired, wash and iron your fabrics before starting to cut.