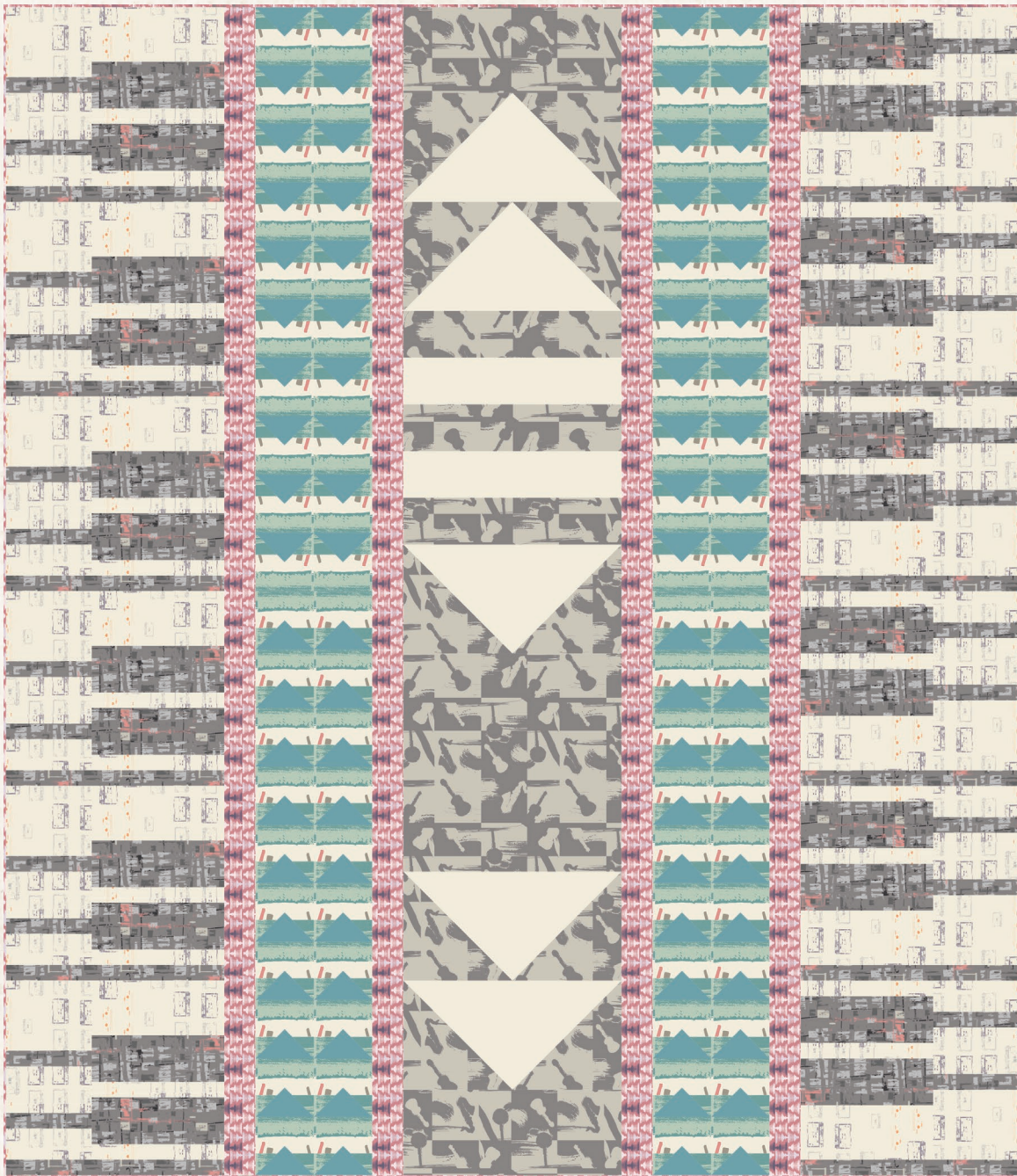


X
X
X
X
X
X
X
X
X
X
X
X

五



XXXXXXXXXXXXXXXXXXXXXXXXXXXX



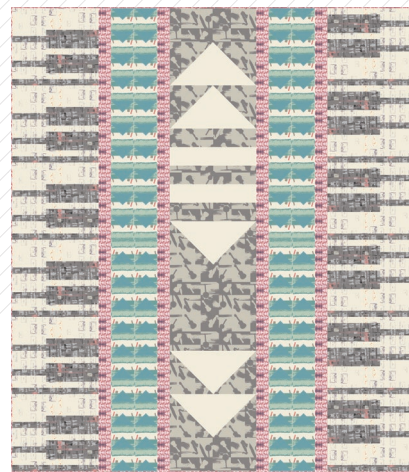
press ▶ **PLAY**

AGFstudio

QUILT DESIGNED BY AGF STUDIO

Heart Melodies

FABRICS DESIGNED BY AGF STUDIO

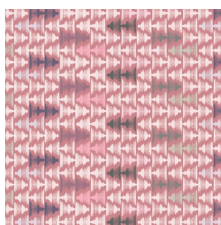


COLOR OPTION

INDIE ACOUSTIC



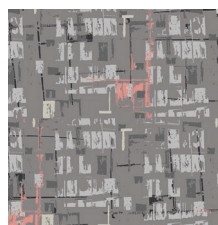
HME-70400
HEART FIELDS FOREVER



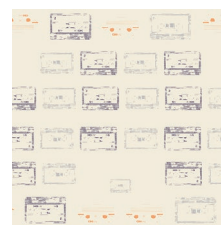
HME-70401
UP TEMPO SOFT



HME-70402
PETAL STRINGS ROMANCE



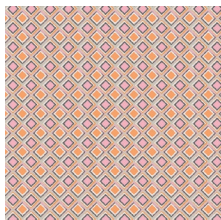
HME-70403
TUNER TUMBLE BASS



HME-70404
CASSETTE 'N' LACE



HME-70405
REMASTERING PLUM



HME-70406
BASS WAVES BRIGHT



HME-70407
THE KEY OF PASTEL



HME-70408
PAINT IT SUBTLE

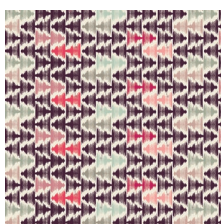


HME-70409
SILHOUETTE LANE

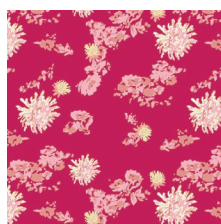
ALTERNATIVE BALLAD



HME-80400
HEART FIELDS ALWAYS



HME-80401
UP TEMPO DEPTH



HME-80402
PETAL STRINGS PASSION



HME-80403
TUNER TUMBLE VIOLA



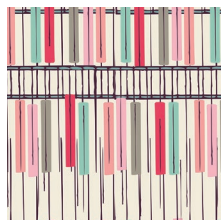
HME-80404
CASSETTE 'N' LOVE



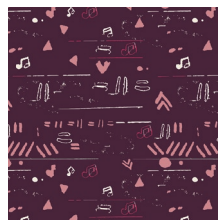
HME-80405
REMASTERING AQUA



HME-80406
BASS WAVES BOLD



HME-80407
THE KEY OF HUE



HME-80408
PAINT IT POTENT



HME-80409
SILHOUETTE ROAD





FINISHED SIZE | 60" x 75"

FABRIC REQUIREMENTS

Fabric A	HME-70404	1 3/8 yd.
Fabric B	HME-70403	1 1/4 yd.
Fabric C	HME-70401	1 yd.
Fabric D	HME-80405	1 1/4 yd.
Fabric E	HME-70409	1 1/4 yd.
Fabric F	PE-452	1/2 yd.
Fabric G	PE-436	3/4 yd.

BACKING FABRIC

HME-70407 4 3/4 yds. *(Suggested)*

BINDING FABRIC

HME-70401 (Fabric **C**) *(included)*

CUTTING DIRECTIONS

*1/4" seam allowances are included.
WOF means width of fabric.*

Twelve (12) 9" x 4" strips from fabric **A**

Twelve (12) 6" x 2 1/2" strips from fabric **A**

Twelve (12) 6" x 3 1/2" strips from fabric **A**

Twelve (12) 6" x 5" strips from fabric **A**

Twenty-four (24) 9" x 1 1/2" strips from fabric **A**

Twenty-four (24) 6" x 1 1/2" strips from fabric **B**

Twenty-four (24) 9" x 3 1/2" strips from fabric **B**

Twelve (12) 14 1/2" x 1 1/2" strips from fabric **B**

Eight (8) WOF x 2 1/2" strips from fabric **C**

Forty (40) 4 5/8" squares from fabric **D**

Twenty (20) 5 1/8" squares from fabric **D**

One (1) 14 1/2" square from fabric **E**

Two (2) 14 1/2" x 6 1/2" strips from fabric **E**

Three (3) 14 1/2" x 3 1/2" strips from fabric **E**

Ten (10) 7 1/2" squares from fabric **E**

Twenty (20) 5 1/8" squares from fabric **F**

Five (5) 14 1/2" x 7 1/2" strips from fabric **G**

Two (2) 14 1/2" x 3 1/2" strips from fabric **G**

CONSTRUCTION

Sew all rights sides together with 1/4" seam allowance.

- There are three different columns combinations for the construction of this quilt top.
- Begin with the construction of the piano columns (which are two). You will need a total of six blocks for each column.
- Start the block by setting aside one 9" x 4" strip from fabric **A**, two 9" x 1 1/2" strip from fabric **A**, one 6" x 4" strip from fabric **A**, one 6" x 3 1/2" strip from fabric **A**, one 6" x 5" strip from fabric **A**, one 6" x 2 1/2" strip from fabric **A**, two 9" x 3 1/2" strips from fabric **B** and two 6" x 1 1/2" strips from fabric **B**.
- Now begin with the construction on the top piece of the block.
- Take the 9" x 4" strip from fabric **A** and attach it to the long edge of the 9" x 3 1/2" strip from fabric **B**, now attach one 9" x 1 1/2" strip from fabric **A** to the **AB** piece, attach one 9" x 3 1/2" strip from fabric **B** to the **ABA** piece, attach one more 9" x 1 1/2" strip from fabric **A** to the **ABAB** piece.
- Set aside.

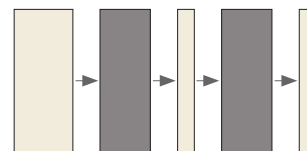


DIAGRAM 1

- Continue with the bottom piece construction of the block.
- Take the 6" x 5" strip from fabric **A** and attach it to the long edge of the 6" x 1 1/2" strip from fabric **B**, now attach the 6" x 3 1/2" strip from fabric **A** to the **AB** piece, attach one 6" x 1 1/2" strip from fabric **B** to the **ABA** piece, attach the 6" x 2 1/2" strip from fabric **A** to the **ABAB** piece.

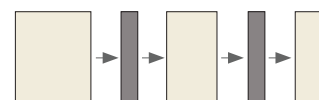


DIAGRAM 2

- Attach the top and bottom pieces together.

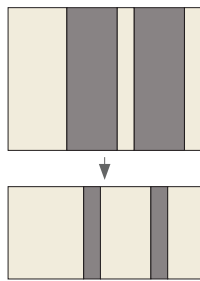


DIAGRAM 3

- Make twelve of these blocks, and then start attaching the columns together.
- Each column is made up of a total of six blocks, use the $1\frac{1}{2}'$ x $1\frac{1}{2}'$ strips from fabric **B** to attach them in-between the blocks.
- Use the cover picture as a reference for fabric placement.

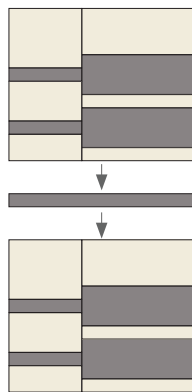


DIAGRAM 4

- Lets move on to the other set of columns, make two columns with a total of forty HST for each column.
- Start by cutting in half and in a diagonal direction all the $4\frac{5}{8}'$ squares from fabric **D**.

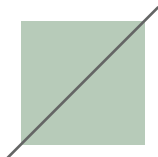


DIAGRAM 5

- Then take the $5\frac{1}{8}'$ squares from fabrics **D** & **F** and cut them in a diagonal direction as well but this time make two diagonal cuts starting from the bottom corners.
- You should end up with four triangles.



DIAGRAM 6

XXXXXXXXXXXXXXXXXXXXXXXXXXXX

- Now take one of the triangles made with the $5\frac{1}{8}'$ squares from fabrics **D** & **F** and attach them together on one of the shortest edges.
- Then take one of the half squares made with the $4\frac{5}{8}'$ squares from fabric **D** and attach it to the **DF** triangle to end up with a $4\frac{1}{4}'$ square.
- Trim it if necessary.

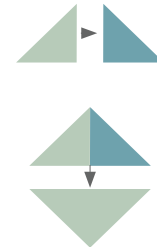


DIAGRAM 6

- Keep sewing the squares together with the remaining pieces until you have a total of eighty squares.
- Then start sewing together sets of two squares to end up with a total of forty sets.
- Take ten sets of squares and start attaching them together one on top of the other.
- Do three more columns of ten square sets each.

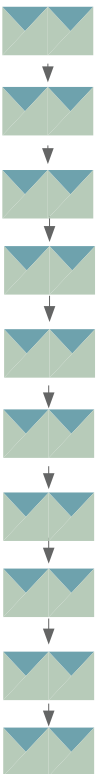


DIAGRAM 7



DIAGRAM 8

- Take two of the previous columns and attach them mirroring each other.
- Set aside.
- Do the same with the two remaining columns and set aside.

- Now that your done with two of the columns combinations you are ready to start the construction of the flying geese for the third one.
- Take one $14\frac{1}{2}' \times 7\frac{1}{2}'$ piece from fabric **G** and two $7\frac{1}{2}'$ squares from fabric **E**.
- Place one $7\frac{1}{2}'$ square from fabric **E** right sides together on the right side of $4\frac{1}{2}' \times 7\frac{1}{2}'$ piece from fabric **G**, stitch it on top diagonally and trim seam allowance to $\frac{1}{4}'$, press open.
- Repeat the previous step with the remaining square on the left side of **G** rectangle.
- Make a total of five flying Geese in order to complete this quilt top.

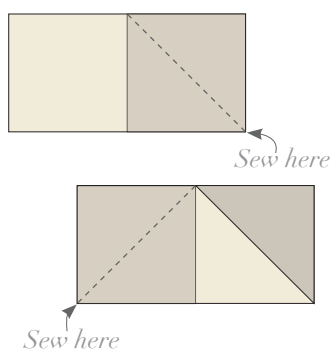


DIAGRAM 9

- Now, start sewing the column together in the following order.
- Start with one $14\frac{1}{2}' \times 6'$ strip from fabric **E** and attach a flying geese under it, followed by another flying geese.
- Take all the $14\frac{1}{2}' \times 3\frac{1}{2}'$ strips from fabrics **E** & **G**, starting with one **E** strip begin attaching them together under the last pieced flying Geese alternating their order (**E****G****E****G****E**)
- Attach to the column another flying Geese followed by the $14\frac{1}{2}'$ square from fabric **E**.
- Add to the column the two remaining flying Geese and end the bottom by attaching the remaining $14\frac{1}{2}' \times 6'$ strip from fabric **E**.

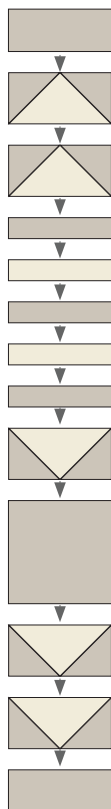


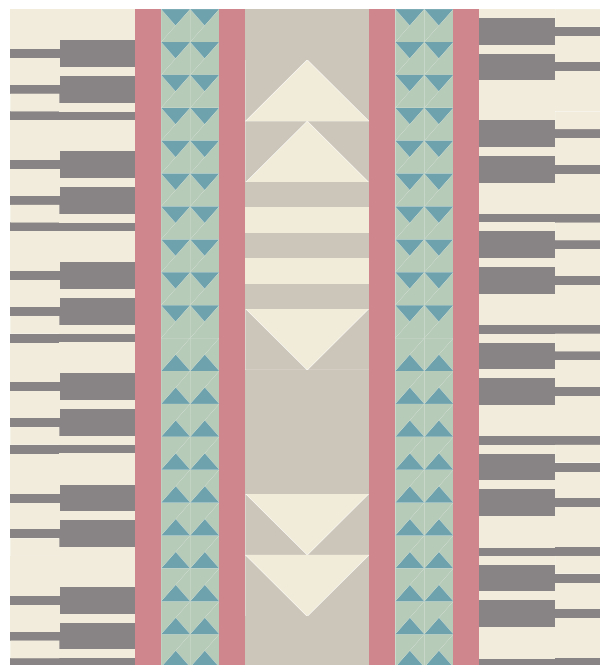
DIAGRAM 10

- Make four $75\frac{1}{2}'$ long strips by taking two WOF x $2\frac{1}{2}'$ strips from fabric **C**, attach them together and trim to the measurement needed.
- Press open and Set aside.

ASSEMBLING THE TOP

Sew all rights sides together with $\frac{1}{4}"$ seam allowance. Press open.

- Now that all the columns are sewn together, its time to attach them together.
- Follow the cover picture for columns placement and sew them together alternating the order of the columns with a $75\frac{1}{2}'$ strip from fabric **C** in-between each of the columns.
- Press seams open.



QUILT ASSEMBLY

Sew rights sides together.

- Place BACKING FABRIC on a large surface wrong side up. Stretch it with masking tape against that surface.
- Place BATTING on top of backing fabric.
- Place TOP on top of the batting with right side facing up. Smooth away wrinkles using your hands.

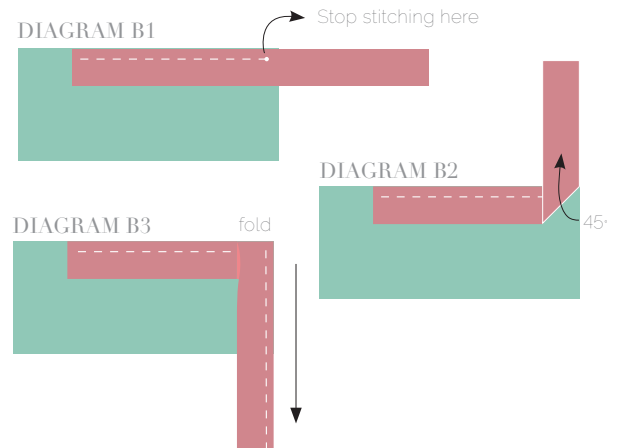
- Pin all layers together and baste with basting thread, using long stitches. You can also use safety pins to join the layers.
- Machine or hand quilt starting at the center and working towards the corners. Remember that quilting motifs are a matter of personal preference. Have fun choosing yours!
- After you finished, trim excess of any fabric or batting, squaring the quilt to proceed to bind it.

BINDING

Sew rights sides together.

- Cut enough strips $1\frac{1}{2}$ ' wide by the width of the fabric **C** to make a final strip 280' long. Start sewing the binding strip in the middle of one of the sides of the quilt, placing the strip right side down and leaving an approximated 5' tail. Sew with $\frac{1}{4}$ ' seam allowance (using straight stitch), aligning the strip's raw edge with the quilt top's raw edge.
- Stop stitching $\frac{1}{4}$ ' before the edge of the quilt (**DIAGRAM B 1**). Clip the threads. Remove the quilt from under the machine presser foot. Fold the strip in a motion of 45° and upward, pressing with your fingers (**DIAGRAM B2**). Hold this fold with your finger, bring the strip down in line with the next edge, making a horizontal fold that aligns with the top edge of the quilt (**DIAGRAM B3**). Start sewing at $\frac{1}{4}$ ' of the border, stitching all the layers. Do the same in the four corners of the quilt.

- Stop stitching before you reach the last 5 or 6 inches. Cut the threads and remove the quilt from under the machine presser foot. Lay the loose ends of the binding flat along the quilt edge, folding the ends back on themselves where they meet. Press them together to form a crease. Using this crease as the stitching line, sew the two open ends of the binding with right sides together (you can help yourself marking with a pencil if the crease is difficult to see).
- Trim seam to $\frac{1}{4}$ ' and press open. Complete the sewing. Turn binding to back of the quilt, turn raw edge inside and stitch by hand using blind stitch.



artgalleryfabrics.com

NOTE: While all possible care has been taken to ensure the accuracy of this pattern, We are not responsible for printing errors or the way in which individual work varies. Please read instructions carefully before starting the construction of this quilt. If desired, wash and iron your fabrics before starting to cut.