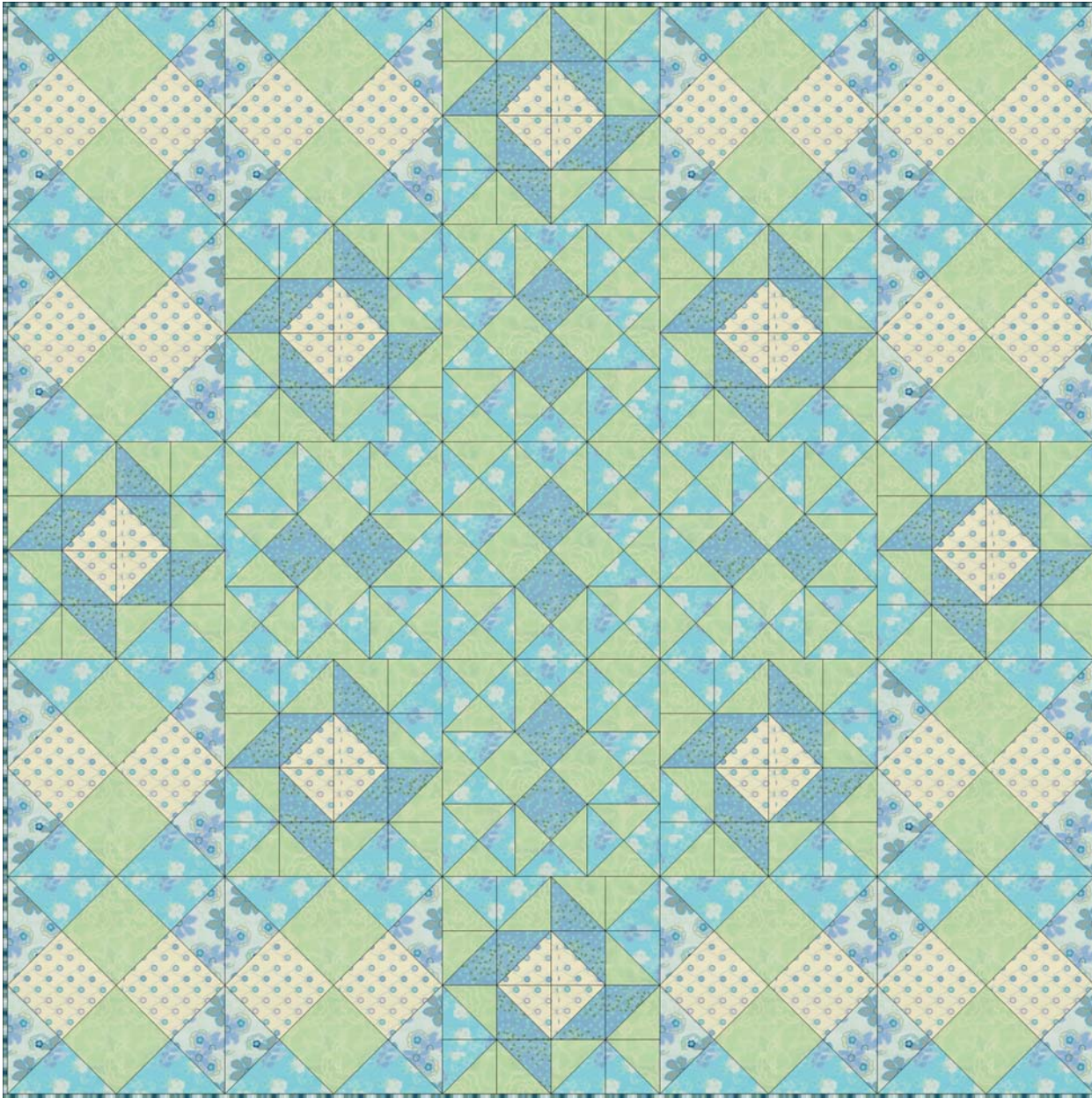
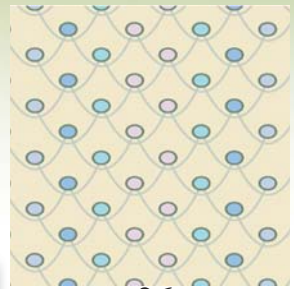


PLEASANT BREEZE

Featuring "SPA BREEZE" Collection



Free Project Sheet



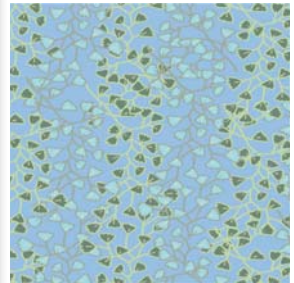
26



25



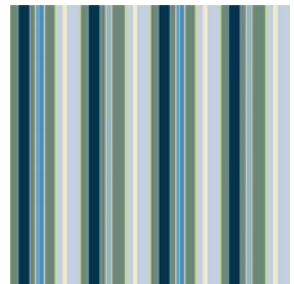
24



9



7



4



© 2007 Courtesy of Art Gallery Quilts. All rights reserved

570 Golden Beach Dr., Golden Beach, FL 33160. TEL: (305) 420-5399 FAX: (425) 799-6103

for more fabrics and patterns visit our website www.artgalleryquilts.com

PLEASANT BREEZE

Finished Size: 60" x 60"
Block Size: 12"

Quilt designed by Patricia Bravo for *Art Gallery Quilts*

All seam allowances are 1/4". Please read all directions before beginning and press carefully after each step.

Fabric Requirements: SPA BREEZE COLLECTION

Fabric A: 1 1/2 yd. of SPA BREEZE # 25
Fabric C: 5/8 yd. of SPA BREEZE # 9
Fabric E: 1-5/8 yd. of SPA BREEZE # 24

Fabric B: 3/4 yd. of SPA BREEZE # 26
Fabric D: 5/8 yd. of SPA BREEZE # 7
Fabric F: 1/4 yd. of SPA BREEZE # 4

Cutting Directions: This quilt consist of 3 blocks:

For each block 1 cut:

Four 5-1/4" squares from fabric E. Cut them twice diagonally.
Four 5-1/4" squares from fabric A. Cut them twice diagonally.
Two 3-3/8" squares from fabric E.
Two 3-3/8" squares from fabric C.



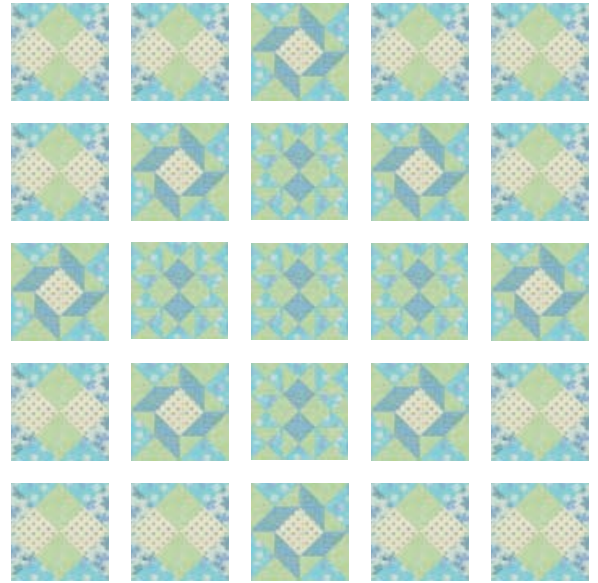
For each block 2 cut:

Four 3-7/8" squares from fabric A. Cut them once diagonally.
Four 3-7/8" squares from fabric C. Cut them once diagonally.
Six 3-7/8" squares from fabric E. Cut them once diagonally.
Two 3-7/8" squares from fabric B. Cut them once diagonally.



For each block 3 cut:

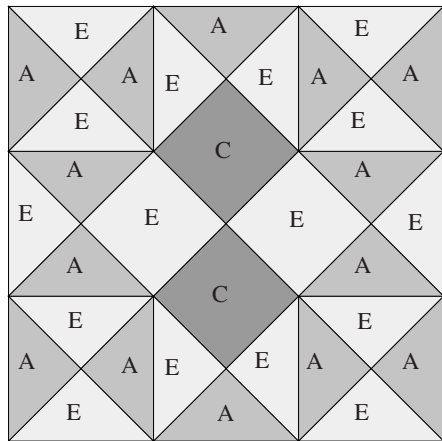
One 7-1/4" square from fabric A. Cut it twice diagonally.
One 7-1/4" square from fabric D. Cut it twice diagonally.
Two 4-3/4" squares from fabric B.
Two 4-3/4" squares from fabric E.



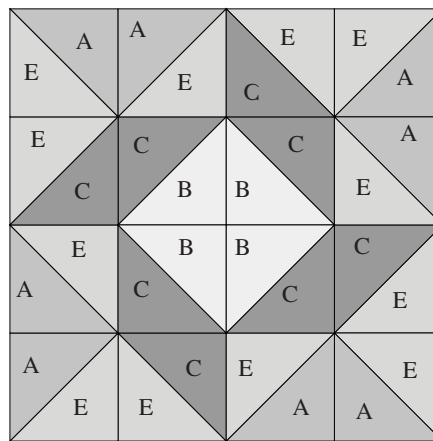
Quilt Diagram

Block Assembly: (Letters correspond to fabric styles)

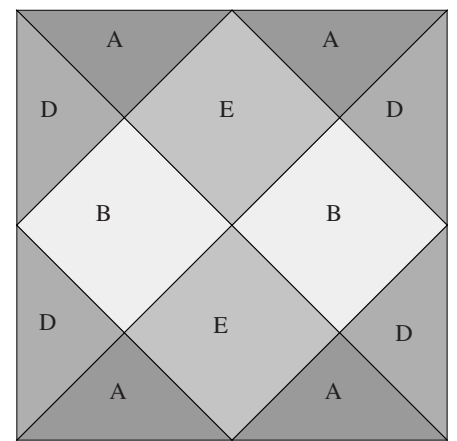
For block 1 sew: (right sides together)
Sew triangles and squares in the way described at the diagram below. **Make 5 blocks.**



For block 2 sew: (right sides together)
Sew triangles together in the way described at the diagram below. **Make 8 blocks.**



For block 3 sew: (right sides together)
Sew triangles and squares together in the way described at the diagram below. **Make 12 blocks.**



Quilt Top Assembly:

Following the quilt diagram above, start piecing the first row in the sequence shown. Go ahead with the second row and all the remaining until you complete all the rows. Then, start sewing all the rows in the order specified being careful to match the seams. Follow with the binding from fabric F. Layer, quilt and bind as desired.

While all possible care has been taken to ensure the accuracy of this pattern, we are not responsible for printing errors or the way in which individual work varies.



© 2007 Courtesy of Art Gallery Quilts. All rights reserved
570 Golden Beach Dr., Golden Beach, FL 33160. TEL: (305) 420-5399 FAX: (425) 799-6103

www.artgalleryquilts.com