

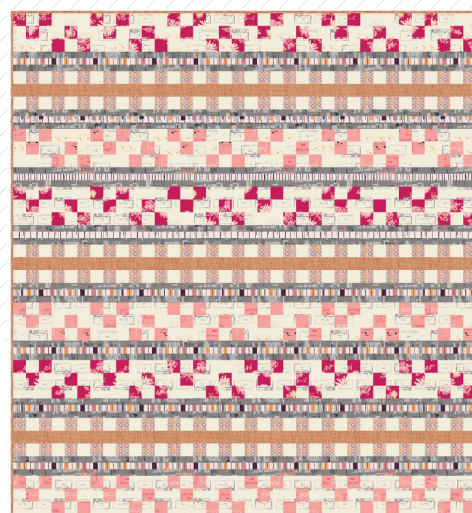
X
X
X
X
X
X
X
X
X
X
X
X

A large, colorful quilted panel featuring a repeating pattern of squares and rectangles in various colors (red, orange, yellow, green, blue, white) and patterns (floral, geometric, solid). The panel is bordered by a wide, dark brown fabric strip.

× × × × × × × × × × × × × × × × × × × ×



FABRICS DESIGNED BY AGF STUDIO

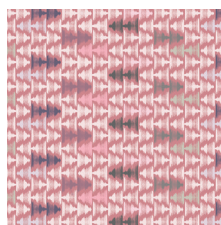


COLOR OPTION

INDIE ACOUSTIC



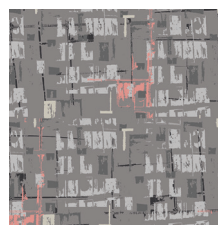
HME-70400
HEART FIELDS FOREVER



HME-70401
UP TEMPO SOFT



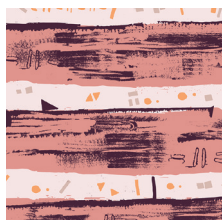
HME-70402
PETAL STRINGS ROMANCE



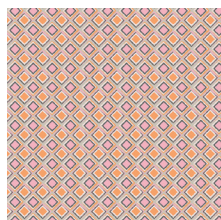
HME-70403
TUNER TUMBLE BASS



HME-70404
CASSETTE 'N LACE



HME-70405
REMASTERING PLUM



HME-70406
BASS WAVES BRIGHT



HME-70407
THE KEY OF PASTEL

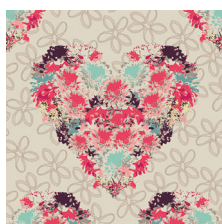


HME-70408
PAINT IT SUBTLE

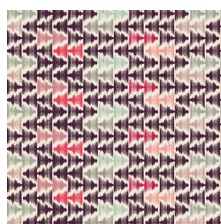


HME-70409
SILHOUTTE LANE

ALTERNATIVE BALLAD



HME-80400
HEART FIELDS ALWAYS



HME-80401
UP TEMPO DEPTH



HME-80402
PETAL STRINGS PASSION



HME-80403
TUNER TUMBLE VIOLA



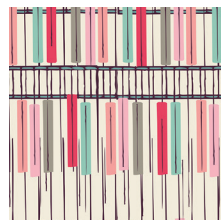
HME-80404
CASSETTE 'N LOVE



HME-80405
REMASTERING AQUA



HME-80406
BASS WAVES BOLD



HME-80407
THE KEY OF HUE



HME-80408
PAINT IT POTENT



HME-80409
SILHOUETTE ROAD



FEEL THE DIFFERENCE © 2015 Courtesy of Art Gallery Quilts LLC. All Rights Reserved.

Plan the moments

FINISHED SIZE | 72' x 80½'

FABRIC REQUIREMENTS

Fabric A	HME-80402	¾ yd.
Fabric B	HME-80404	¾ yd.
Fabric C	HME-70404	2½ yd.
Fabric D	HME-70406	¾ yd.
Fabric E	PE-408	⅝ yd.
Fabric F	DEN-S-2007	⅞ yd.
Fabric G	HME-70403	1 ⅓ yd.
Fabric H	HME-70407	1 yd.

BACKING FABRIC

HME-70405 4 yds. (*Suggested*)

BINDING FABRIC

DEN-S-2007 (Fabric **F**) (*included*)

CUTTING DIRECTIONS

*¼" seam allowances are included.
WOF means width of fabric.*

Eight (10) 2½' x WOF strips from fabric **A**

Eight (10) 2½' x WOF strips from fabric **B**

Four (6) 2½' x WOF strips from fabric **C**

Four (6) 6½' x WOF strips from fabric **C**

Eight (8) 4½' x WOF strips from fabric **C**

Eight (9) 2½' x WOF strips from fabric **D**

Eight (8) 2½' x WOF strips from fabric **E**

Sixt (6) 2½' x WOF strips from fabric **F**

Thirty-two (32) 1½' x WOF strips from fabric **G**

Sixteen (16) 2' x WOF strips from fabric **H**

CONSTRUCTION

Sew all rights sides together with ¼" seam allowance.

- Sew together the following strips: 2 ½' Fabric **A** > 2½' strip Fabric **C** > 2½' strip Fabric **A** > 6½ Fabric **C** (Diagram 1). Press.
- Repeat two (2) more times, for a total of 3 large pieces.

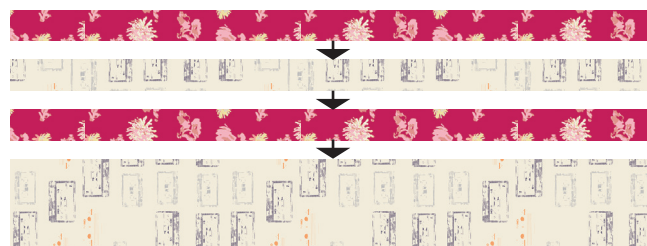


DIAGRAM 1

- Cut the rectangular block into thirty-six (36) strips each measuring 2½' wide. (Diagram 2)

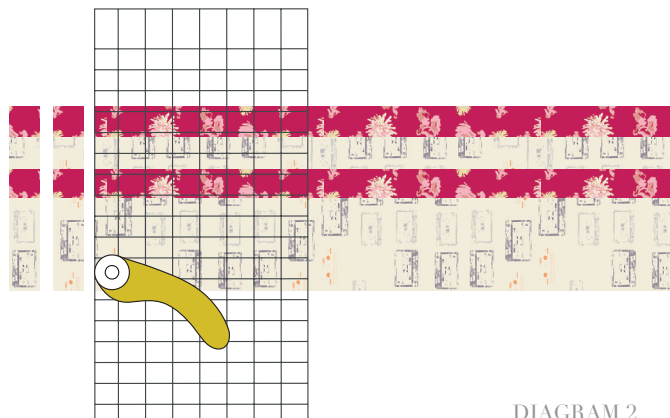


DIAGRAM 2

- Sew 6 strips to each other, front to end, ending up with a long row the width of the quilt. Repeat with the remaining strips, ending up with 6 completed rows (**AC** Row #1). (Diagram 3)



DIAGRAM 3

- Sew together the following strips: 2 ½' Fabric **A** > 4½' strip Fabric **C** > 2½' strip Fabric **A** > 4½ Fabric **C**. Press.
- Cut the block into eighteen (18) strips measuring 2½' wide.
- Sew 6 strips to each other, front to end, ending up with a long row the width of the quilt. Repeat two more times. You will have 3 rows (**AC** Row #2).

- On your **AC** #2 rows you will have to seam rip one square of fabric **C** from the end and sew it to the beginning of the row, before the first Fabric **A** square.
- Referring to the cover Quilt illustration sew together: **AC** Row #1 > **AC** Row #2 > **AC** Row #1 (flipped). Repeat two more times. (Diagram 4)



DIAGRAM 4

- Repeat all the previous construction instructions, using Fabric **B** instead of Fabric **A**.
- Sew together nine (9) 2½' Fabric **E** strips with (9) 2½' Fabric **D** strips, alternating. Press.
- Cut the rectangular block into twelve (12) strips each measuring 2½' wide. (Diagram 5)

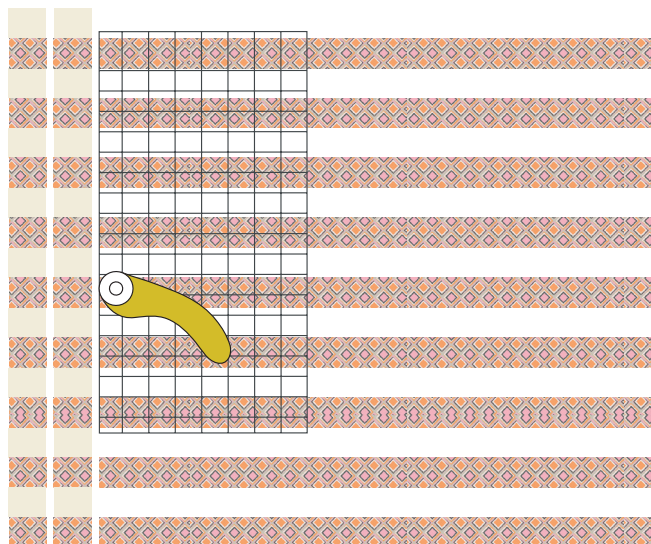


DIAGRAM 5

- Join two strips together, front to end. Repeat with all strips. Press. You will end up with six complete **ED** Rows.
- Take the Fabric **F** strips and join two together at the ends, repeat for all strips. Press.
- Now, referring to the cover quilt illustration, sew together: **ED** Row > Fabric **F** row > **ED** Row. Repeat two more times. Press, and trim any excess fabric **F**. (Diagram 6)



DIAGRAM 6

- Now take all your Fabric **G** strips and sew pairs together at ends, ending up with 16 long strips. Press.
- Take all your Fabric **H** strips and sew pairs together at ends, ending up with 8 long strips. Press.
- Sew together: Fabric **G** strip > Fabric **H** strip > Fabric **G** strip. Repeat seven more times. Press. (Diagram 7)
- Trim it if necessary.



DIAGRAM 7

ASSEMBLING THE TOP

Sew all rights sides together with ¼" seam allowance. Press open.

- Now take all your assembled rows and sew together in the following order (refer to cover illustration): **AC** Fabric row > **GH** Fabric row > **DEF** Fabric row > **GH** Fabric row > **BC** Fabric row > **GH** Fabric row > **AC** Fabric row > **GH** Fabric row > **DEF** Fabric row > **GH** Fabric row > **BC** Fabric row > **GH** Fabric row > **AC** Fabric row > **GH** Fabric row > **DEF** Fabric row > **GH** Fabric row > **BC** Fabric row.
- Press and trim if necessary.

QUILT ASSEMBLY

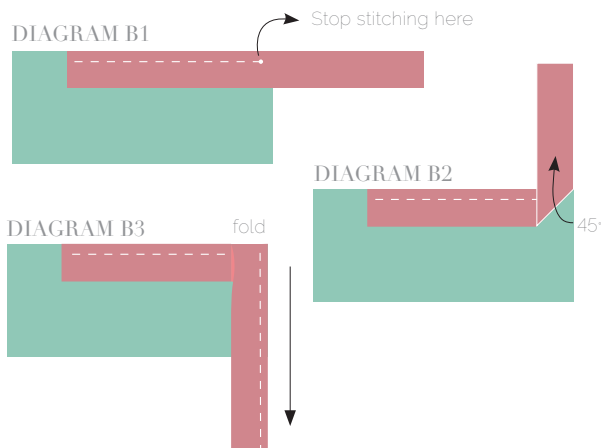
Sew rights sides together.

- Place **BACKING FABRIC** on a large surface wrong side up. Stretch it with masking tape against that surface.
- Place **BATTING** on top of backing fabric.
- Place **TOP** on top of the batting with right side facing up. Smooth away wrinkles using your hands.
- Pin all layers together and baste with basting thread, using long stitches. You can also use safety pins to join the layers.
- Machine or hand quilt starting at the center and working towards the corners. Remember that quilting motifs are a matter of personal preference. Have fun choosing yours!
- After you finished, trim excess of any fabric or batting, squaring the quilt to proceed to bind it.

BINDING

Sew rights sides together.

- Cut enough strips $1\frac{1}{2}$ ' wide by the width of the fabric **F** to make a final strip 335' long. Start sewing the binding strip in the middle of one of the sides of the quilt, placing the strip right side down and leaving an approximated 5' tail. Sew with $\frac{1}{4}$ ' seam allowance (using straight stitch), aligning the strip's raw edge with the quilt top's raw edge.
- Stop stitching $\frac{1}{4}$ ' before the edge of the quilt (**DIAGRAM B1**). Clip the threads. Remove the quilt from under the machine presser foot. Fold the strip in a motion of 45° and upward, pressing with your fingers (**DIAGRAM B2**). Hold this fold with your finger, bring the strip down in line with the next edge, making a horizontal fold that aligns with the top edge of the quilt (**DIAGRAM B3**). Start sewing at $\frac{1}{4}$ ' of the border, stitching all the layers. Do the same in the four corners of the quilt.
- Stop stitching before you reach the last 5 or 6 inches. Cut the threads and remove the quilt from under the machine presser foot. Lay the loose ends of the binding flat along the quilt edge, folding the ends back on themselves where they meet. Press them together to form a crease. Using this crease as the stitching line, sew the two open ends of the binding with right sides together (you can help yourself marking with a pencil if the crease is difficult to see).
- Trim seam to $\frac{1}{4}$ ' and press open. Complete the sewing. Turn binding to back of the quilt, turn raw edge inside and stitch by hand using blind stitch.



artgalleryfabrics.com

NOTE: While all possible care has been taken to ensure the accuracy of this pattern, We are not responsible for printing errors or the way in which individual work varies.

Please read instructions carefully before starting the construction of this quilt. If desired, wash and iron your fabrics before starting to cut.

© 2016 Courtesy of Art Gallery Quilts LLC. All Rights Reserved.