

Palette



Palette

SEW Caroline

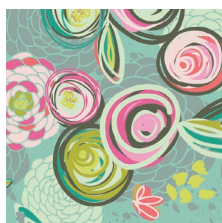
QUILT DESIGNED BY SEW CAROLINE

Chalk & Paint

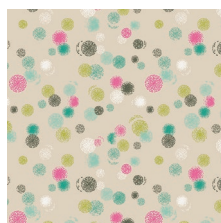


FABRICS DESIGNED BY SEW CAROLINE

SPRIGHTLY



CHP-40200
SPRAYED BLOOMS BRIGHT



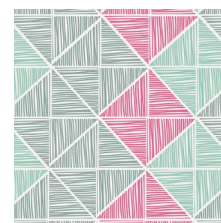
CHP-40201
AEROSOL STIPPLE SMOOTH



CHP-40202
WRITINGS ON WALLS



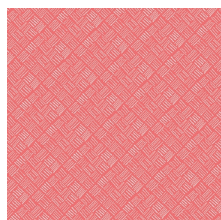
CHP-40203
UNTAPED SPLATTER SPARK



CHP-40204
ANGULAR STRINGS COATED



CHP-40205
TRIANGLE BRUSH VARNISH



CHP-40206
SHORT LINES BURST



CHP-40207
EVENLY SMUDGED FUN



CHP-40208
LET'S TALK GREEN

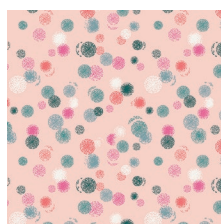


CHP-40209
DRIPPING PAINT WARNING

LIVELY



CHP-50200
SPRAYED BLOOMS SUBTLE



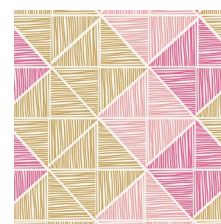
CHP-50201
AEROSOL STIPPLE BLUSH



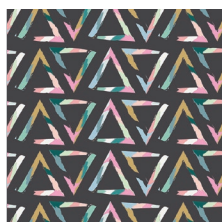
CHP-50202
WRITINGS ON BOARDS



CHP-50203
UNTAPED SPLATTER FROST



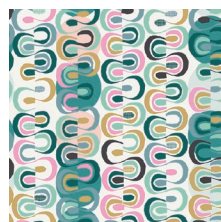
CHP-50204
ANGULAR STRINGS GLAZED



CHP-50205
TRIANGLE BRUSH TEMPERA



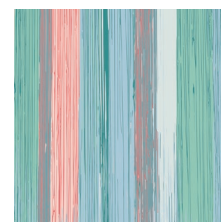
CHP-50206
SHORT LINES MIST



CHP-50207
EVENLY SMUDGED JOY



CHP-50208
LET'S CHALK OUTLINES



CHP-50209
DRIPPING PAINT COOLING



FEEL THE DIFFERENCE © 2015 Courtesy of Art Gallery Quilts LLC. All Rights Reserved.

Palette

FINISHED SIZE | 64" x 64"

FABRIC REQUIREMENTS

Fabric A	CHP-40209	1 $\frac{7}{8}$ yd.
Fabric B	CHP-40207	1 $\frac{3}{8}$ yd.
Fabric C	CHP-40202	$\frac{7}{8}$ yd.
Fabric D	CHP-40200	$\frac{3}{8}$ yd.
Fabric E	PE-408	1 $\frac{1}{2}$ yd.

BACKING FABRIC

CHP-40203 4 yds. (*Suggested*)

BINDING FABRIC

PE-408 (Fabric **E**) (*included*)

CUTTING DIRECTIONS

$\frac{1}{4}$ " seam allowances are included.
WOF means width of fabric.

Twenty-Eight (28) 8 $\frac{1}{2}$ " squares from fabric **A**

Twenty (20) 8 $\frac{1}{2}$ " squares from fabric **B**

Twelve (12) 8 $\frac{1}{2}$ " squares from fabric **C**

Four (4) 8 $\frac{1}{2}$ " squares from fabric **D**

One-hundred-twenty-eight (128) 3 $\frac{1}{8}$ " squares from fabric **E**

CONSTRUCTION

Sew all rights sides together with $\frac{1}{4}$ " seam allowance.

- Take the 3 $\frac{1}{8}$ " squares from fabric **E** and cut them in half diagonally. Set aside.



DIAGRAM 1

- Take one 8 $\frac{1}{2}$ " square from fabric **A** and four triangles from fabric **E**.
- Align each triangle to one of the corners of the 8 $\frac{1}{2}$ " square from fabric **A** as shown in the diagram below. Both fabrics should be facing the right side of the fabric.
- Pin them and then sew $\frac{1}{4}$ " away from the triangle edge.



DIAGRAM 2

- Trim the excess fabric from each corner

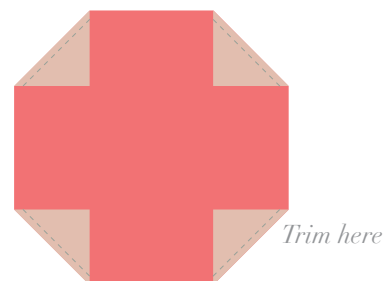


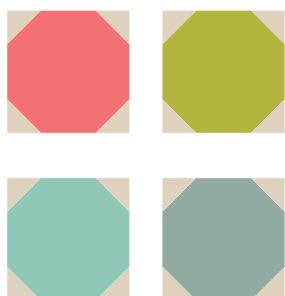
DIAGRAM 3

- Open up the seams with the iron.



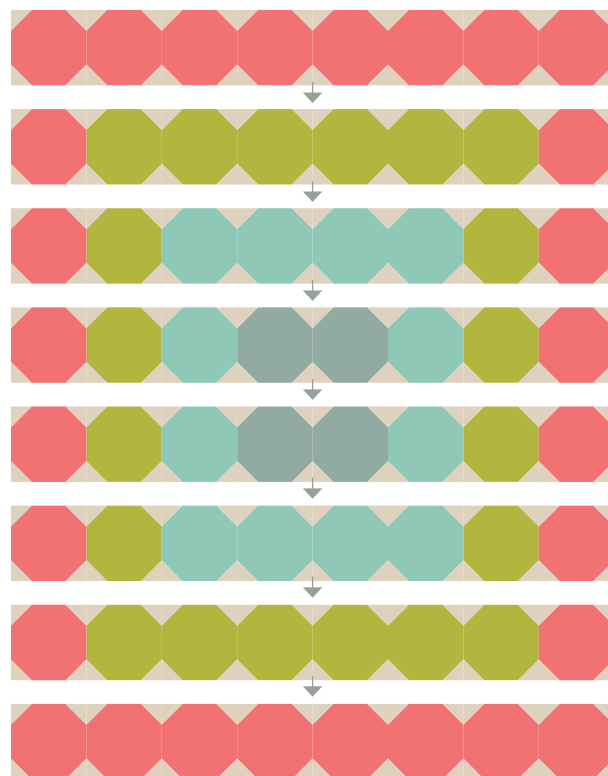
DIAGRAM 3

- Repeat the previous steps with all the 8½" squares from fabrics **A-D**
- You should end up with a total of sixty four blocks, twenty-eight from fabric **A**, twenty with fabric **B**, twelve with fabric **C** and four with fabric **D**.
- Set aside.



ASSEMBLING THE TOP

- Arrange blocks in eight rows of eight blocks each.
(Refer to the cover photo if necessary)
- Sew blocks in each row together, press seams to one side.
- Sew Rows together to complete quilt top. Press seams open.



QUILT ASSEMBLY

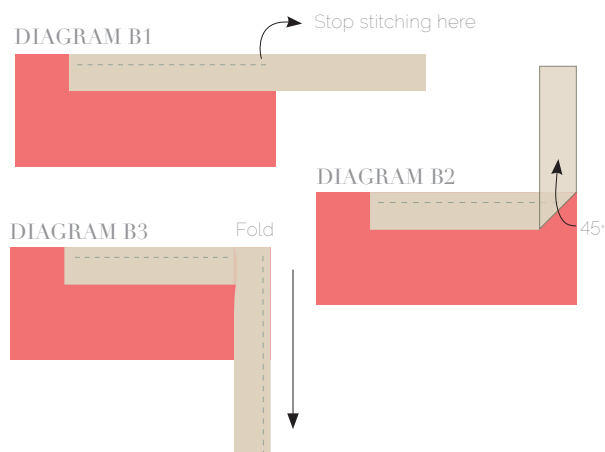
- Place **BACKING FABRIC** on a large surface wrong side up. Stretch it with masking tape against that surface.
- Place **BATTING** on top of backing fabric.
- Place **TOP** on top of the batting with right side facing up. Smooth away wrinkles using your hands.
- Pin all layers together and baste with basting thread, using long stitches. You can also use safety pins to join the layers.
- Machine or hand quilt starting at the center and working towards the corners. Remember that quilting motifs are a matter of personal preference. Have fun choosing yours!
- After you finished, trim excess of any fabric or batting, squaring the quilt to proceed to bind it.

BINDING

Sew rights sides together.

- Cut enough strips $1\frac{1}{2}$ ' wide by the width of the fabric **E** to make a final strip 266' long. Start sewing the binding strip in the middle of one of the sides of the quilt, placing the strip right side down and leaving an approximated 5' tail. Sew with $\frac{1}{4}$ ' seam allowance (using straight stitch), aligning the strip's raw edge with the quilt top's raw edge.
- Stop stitching $\frac{1}{4}$ ' before the edge of the quilt (**DIAGRAM B 1**). Clip the threads. Remove the quilt from under the machine presser foot. Fold the strip in a motion of 45° and upward, pressing with your fingers (**DIAGRAM B 2**). Hold this fold with your finger, bring the strip down in line with the next edge, making a horizontal fold that aligns with the top edge of the quilt (**DIAGRAM B 3**). Start sewing at $\frac{1}{4}$ ' of the border, stitching all the layers. Do the same in the four corners of the quilt.

- Stop stitching before you reach the last 5 or 6 inches. Cut the threads and remove the quilt from under the machine presser foot. Lay the loose ends of the binding flat along the quilt edge, folding the ends back on themselves where they meet. Press them together to form a crease. Using this crease as the stitching line, sew the two open ends of the binding with right sides together (you can help yourself marking with a pencil if the crease is difficult to see).
- Trim seam to $\frac{1}{4}$ ' and press open. Complete the sewing. Turn binding to back of the quilt, turn raw edge inside and stitch by hand using blind stitch.



artgalleryfabrics.com

NOTE: While all possible care has been taken to ensure the accuracy of this pattern, We are not responsible for printing errors or the way in which individual work varies. Please read instructions carefully before starting the construction of this quilt. If desired, wash and iron your fabrics before starting to cut.

© 2015 Courtesy of Art Gallery Quilts LLC. All Rights Reserved.