

Monaco

Featuring "FRENCH RIVIERA" Collection



Free Project Sheet

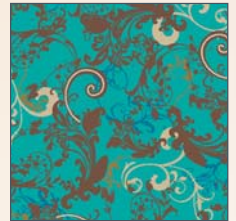
Designed by Patricia Bravo - 58.5 by 58.5



FR-5060



FR-5061



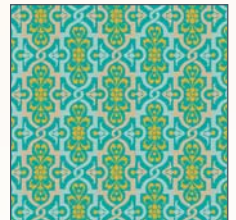
FR-5062



FR-5063



FR-5064



FR-5065



FR-4060



FR-4061



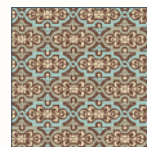
FR-4062



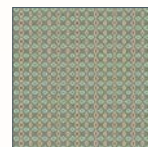
FR-4063



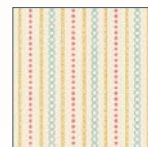
FR-4064



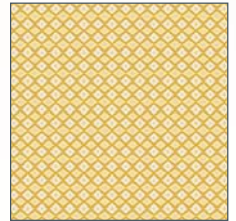
FR-4065



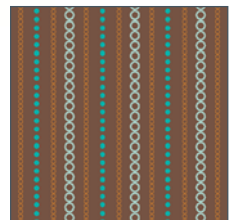
FR-4066



FR-4067



FR-5066



FR-5067



© 2008 Courtesy of Art Gallery Quilts LLC. All rights reserved

3804 N 29th Avenue - Hollywood, FL 33020.

TEL: (888) 420-5399 FAX: (425) 799-6103

for more fabrics and patterns visit our website

www.artgalleryfabrics.com

Fabric Requirements: "FRENCH RIVIERA" COLLECTION

Fabric A: 1/2 yd. of **FR-5062**

Fabric B: 1/4 yd. of **FR-5064**

Fabric C: 5/8 yd. of **FR-5067**

Fabric D: 1/4 yd. of **FR-5066**

Fabric E: 1 1/8 yd. of **FR-5061**

Fabric F: 1/2 yd. of **FR-5060**

Fabric G: 3/4 yd. of **FR-5063**

Fabric H: 7/8 yd. of **FR-5065**

The estimate for the fabrics of the borders and binding assumes that long strips are pieced.

Cutting Directions:

For blocks cut

For fabric A cut:

Five (5) 8 1/2" squares.

For fabric B cut:

Four (4) 8 1/2" squares.

For fabric C cut:

Two (2) 8 1/2" squares.

Four (4) 2 5/8" squares. Cut them twice diagonally (*small triangles for the sashing*).

Twenty-four (24) 1 1/2" squares.

For fabric D cut:

Two (2) 8 1/2" squares.

For fabric E cut:

Five (5) 8 1/2" squares.

For fabric F cut:

Five (5) 8 1/2" squares.

For fabric G cut:

Two (2) 8 1/2" squares.

Three (3) 12 1/2" squares. Cut them twice diagonally (*for the side triangles*).

Two (2) 6 1/2" squares. Cut them once diagonally (*for the corners*).

For fabric H cut:

Sixty-four (64) 8 1/2" by 1 1/2" strips (*for the sashing*).

For borders cut

Two (2) 51 3/8" by 1 1/2" strips from fabric C.

Two (2) 53 3/8" by 1 1/2" strips from fabric C.

Two (2) 53 3/8" by 3" strips from fabric E.*

Two (2) 58 3/8" by 3" strips from fabric E.*

(in order to get these long strips, you need to join two or more strips of a same fabric).

**Allow extra yardage for matching or centering a pattern of your fabric*



Color Variation

Quilt Top Assembly

For first row: (right sides together)

Sew two small triangles from fabric C to the ends of one fabric H sashing strip. Sew this unit to a half square triangle from fabric G for the corner. Follow adding the units for the second row as shown with the arrows on the *Assembly Diagram* above right (remember that the row's construction is diagonal in this quilt).

Complete all the rows. Then, piece all the rows together as shown on the *Assembly Diagram*.

For the inner border, Join, enough fabric C strips in order to make a 51 3/8" by 1 1/2" strip. Make another long strip like this. Sew them along the top and the bottom sides of the top with a 1/4" seam allowance. Press open.

Join, enough fabric C strips in order to make a 53 3/8" by 1 1/2" strip. Make another long strip like this. Sew them along the remaining sides of the top with a 1/4" seam allowance. Press open.

For the outer border, Join, enough fabric E strips in order to make a 53 3/8" by 3" strip. Make another three strips like this. Sew them along the two sides of the top with a 1/4" seam allowance. Press open. Join, enough fabric E strips in order to make a 58 3/8" by 3" strip. Make another three strips like this. Sew them along the remaining sides of the top with a 1/4" seam allowance. Press open.

Layer, quilt and bind with fabric H strips as desired.

While all possible care has been taken to ensure the accuracy of this pattern, we are not responsible for printing errors or the way in which individual work varies.