

Forager



Forager

Bonnie Christine

QUILT DESIGNED BY BONNIE CHRISTINE AND MAXIE MAKES



maxie makes

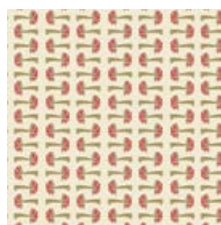


FABRICS DESIGNED BY BONNIE CHRISTINE

EARLY BRIGHT



FOR-37700
WILD POSY LUMINOUS



FOR-37701
CAPPED BIOME



FOR-37702
IN THE THICKET DAWN



FOR-37703
DAYBREAK HERBAGE



FOR-37705
LACED MOSS



FOR-37706
FIREFLY BEAM



FOR-37708
TIMBER TWILIGHT



FOR-37709
LUNA RISING ESSENCE



FOR-37710
MAPLE MILL SAGE

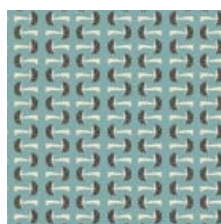


FOR-37711
NATURE STUDY RIDGE

LATE NIGHT



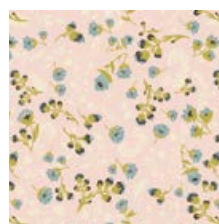
FOR-47700
WILD POSY FLORA



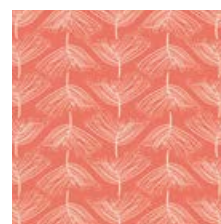
FOR-47701
CAPPED DIM



FOR-47702
IN THE THICKET DUSK



FOR-47704
FLOURISH AGLOW



FOR-47705
LACED SUNSET



FOR-47707
CLOVER GROVE WHISPER



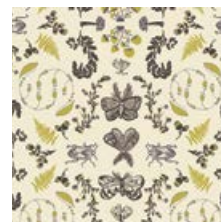
FOR-47708
TIMBER NIGHTFALL



FOR-47709
LUNA RISING SHADOW



FOR-47710
MAPLE MILL FOG



FOR-47711
NATURE STUDY BARK



FEEL THE DIFFERENCE © 2015 Courtesy of Art Gallery Quilts LLC. All Rights Reserved.

Forager

FINISHED SIZE | 32.5" x 45"

FABRIC REQUIREMENTS

Fabric A	FOR-37700	¼ yd.
Fabric B	FOR-37701	¼ yd.
Fabric C	FOR-37702	¼ yd.
Fabric D	FOR-37703	¼ yd.
Fabric E	FOR-37705	¼ yd.
Fabric F	FOR-37706	¼ yd.
Fabric G	FOR-37708	¾ yd.
Fabric H	FOR-37709	¼ yd.
Fabric I	FOR-377010	¼ yd.
Fabric J	FOR-377011	¼ yd.

BACKING FABRIC

FOR-47711- 1 ½ yds. (*Suggested*)

BINDING FABRIC

FOR-37708-(Included)

CONSTRUCTION

Sew all rights sides together with ¼" seam allowance.

- Cut out the template provided. You may use the template to cut your tumblers, or use it with an 18° ruler as follows:
- Position the template on the bottom side of an 18° wedge ruler, sliding it on the ruler until the longer sides are even with the edges of the ruler. **See Diagram 1** (The tumbler template is shown as the pink area.)
- We used the Fast2Cut wedge ruler by C&T Publishing, and found that the wider edge of the tumbler template aligned with the line labeled "Wreath Top" on the ruler. You could tape the paper template to the bottom edge of the wedge ruler, or just align the "Wreath top" line with the long cut edge of your strip for cutting. (If you are using a different brand ruler, align the long sides of the tumbler template on the ruler and tape in place.)

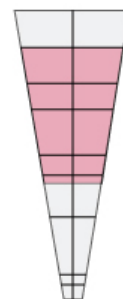


DIAGRAM 1

- Cut a 5" strip, width of fabric, from each of the 10 fabrics. Keep the strips folded to allow working with a double layer. Cutting from one strip at a time, lay the strip on a cutting matt horizontally, with the selvage edges at the right end and the fold at the left. Beginning at the selvage edge, place the wedge ruler on the strip, aligning the template with the edges of the strip. Trim away the excess at the selvage edge. **See Diagram 2.**



DIAGRAM 2

- Rotate the strip so that the cut edges are at the left and the fold is at the right. Begin cutting wedges, rotating the ruler with each cut. As you approach the fold, open the folded fabric for the last two cuts, cutting these last two tumblers single layer.
- You should be able to cut 14 tumblers from each 5" strip. **See Diagram 3.**

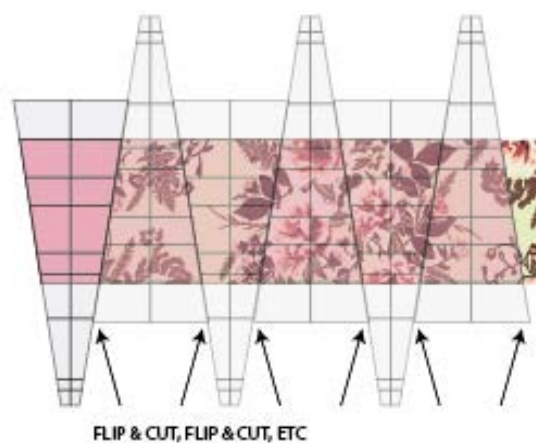


DIAGRAM 3

- 130 tumblers are needed to make the quilt. You will have about 10 leftover pieces.

QUILT LAYOUT

- **Note:** When placing the tumbler patches in rows, half will be placed with the widest end at the top and half will be placed with the narrow end at the top. When cutting directional prints in the manner outlined above, you'll be able to orient them properly in the rows by paying attention to the direction of the print. Arrange and sew tumblers to your liking, as follows:
- For the first row, the first tumbler is oriented with the narrow end up, thereafter alternating wide and narrow for a total of 13 tumblers. See **Diagram 4**.



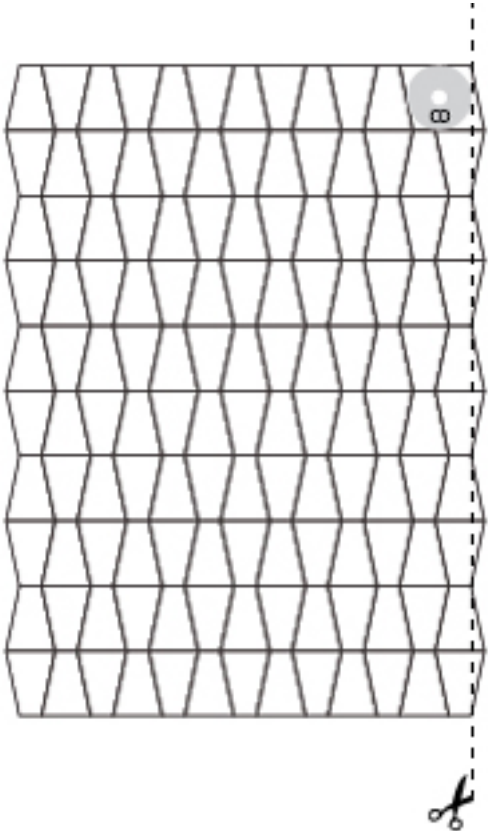
DIAGRAM 4

- The second row's placement is opposite, with each subsequent row alternating in the same manner. See quilt layout diagram.
- To sew the tumblers together, place the first two tumblers right side together as shown in Diagram 5. **Note that the tips of the tumblers extend beyond each other by 1/4" at both ends of the seam allowance.**



DIAGRAM 5

- Press all seam allowances in row one to the right. Press all seam allowances in row two to the left. Alternate in the same manner for each subsequent row. This will allow the seam allowances to nestle when sewing the rows together.
- Sew the rows together and press all row seam allowances in one direction (up or down). After sewing all ten rows together, trim the long sides of the quilt straight. See quilt layout diagram. **If desired, trim the corners in a curve. A CD, placed in the corners, is a good circle template.**
- Layer, quilt as desired and bind. **Note: When curving the corners, bias binding will be necessary.**



QUILT ASSEMBLY

Sew rights sides together.

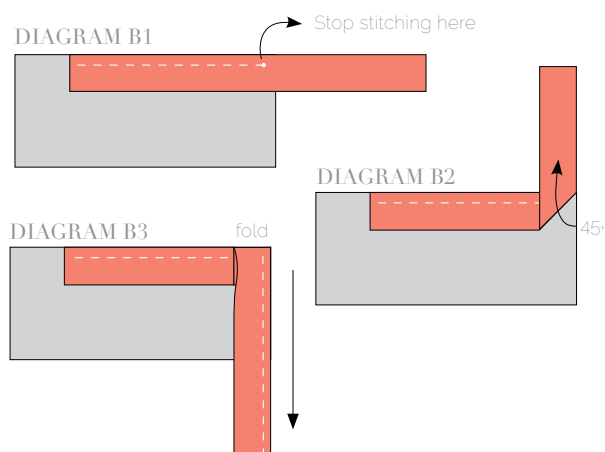
- Place BACKING FABRIC on a large surface wrong side up. Stretch it with masking tape against that surface.
- Place BATTING on top of backing fabric.
- Place TOP on top of the batting with right side facing up. Smooth away wrinkles using your hands.
- Pin all layers together and baste with basting thread, using long stitches. You can also use safety pins to join the layers.
- Machine or hand quilt starting at the center and working towards the corners. Remember that quilting motifs are a matter of personal preference. Have fun choosing yours!
- After quilting, trim excess fabric and batting to square the quilt in preparation for binding.

BINDING

Sew rights sides together.

- Cut enough strips $1\frac{1}{2}$ " wide by the width of the fabric **FOR-37708** to make a final strip 165" long. Start sewing the binding strip in the middle of one of the sides of the quilt, placing the strip right side down and leaving an approximated 5" tail. Sew with $\frac{1}{4}$ " seam allowance (using straight stitch), aligning the strip's raw edge with the quilt top's raw edge.
- Stop stitching $\frac{1}{4}$ " before the edge of the quilt (**DIAGRAM B 1**). Clip the threads. Remove the quilt from under the machine presser foot. Fold the strip in a motion of 45° and upward, pressing with your fingers (**DIAGRAM B2**). Hold this fold with your finger, bring the strip down in line with the next edge, making a horizontal fold that aligns with the top edge of the quilt (**DIAGRAM B3**). Start sewing at $\frac{1}{4}$ " of the border, stitching all the layers. Do the same in the four corners of the quilt.

- Stop stitching before you reach the last 5 or 6 inches. Cut the threads and remove the quilt from under the machine presser foot. Lay the loose ends of the binding flat along the quilt edge, folding the ends back on themselves where they meet. Press them together to form a crease. Using this crease as the stitching line, sew the two open ends of the binding with right sides together (you can help yourself marking with a pencil if the crease is difficult to see).
- Trim seam to $\frac{1}{4}$ " and press open. Complete the sewing. Turn binding to back of the quilt, turn raw edge inside and stitch by hand using blind stitch.



artgalleryfabrics.com

NOTE: While all possible care has been taken to ensure the accuracy of this pattern, We are not responsible for printing errors or the way in which individual work varies. Please read instructions carefully before starting the construction of this quilt. If desired, wash and iron your fabrics before starting to cut.

© 2016 Courtesy of Art Gallery Quilts LLC. All Rights Reserved.

