

flourishing



flourishing *Bonnie Christine*

QUILT DESIGNED BY BONNIE CHRISTINE
& MAXINE RAMEY

maxine makes

CULTIVATE

FABRICS DESIGNED BY BONNIE CHRISTINE



COLOR OPTION

FLOURISH



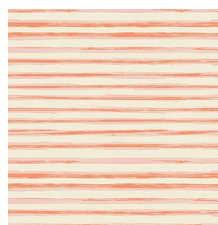
CUL-8670
FLOWER FIELD MIST



CUL-8671
PLOTTED FARM MOSS



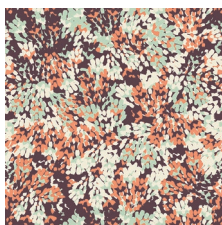
CUL-8672
VINTAGE VASES EGGPLANT



CUL-8673
ROW BY ROW LIT



CUL-8674
THRIVE APRICOT



CUL-8675
EVERBLOOMING FIG



CUL-8676
ROOTED EARTH



CUL-8677
SEED PACKET SHADOW



CUL-8678
PRUNING ROSES CITRUS



CUL-8679
FLORICULTURE MIDNIGHT

HARVEST



CUL-9670
FLOWER FIELD SOIL



CUL-9671
VINTAGE VASES GINGER



CUL-9672
VINTAGE VASES



CUL-9673
ROW BY ROW DEEP



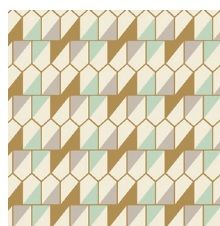
CUL-9674
THRIVE PASSIFLORA



CUL-9675
EVERBLOOMING WILLOW



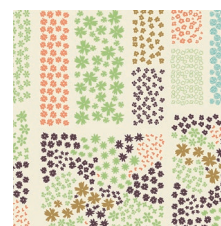
CUL-9676
ROOTED WARMTH



CUL-9677
SEED PACKET MINT



CUL-9678
PRUNING ROSES WATER



CUL-9679
FLORICULTURE NOONTIDE



FEEL THE DIFFERENCE © 2015 Courtesy of Art Gallery Quilts LLC. All Rights Reserved.



FINISHED SIZE | 66 1/2' x 85 1/2'

FABRIC REQUIREMENTS

| | | |
|-----------------|----------|-----------|
| Fabric A | CUL-9670 | 7/8 yd. |
| Fabric B | CUL-9671 | 7/8 yd. |
| Fabric C | CUL-9672 | 7/8 yd. |
| Fabric D | CUL-9673 | 3 1/8 yd. |
| Fabric E | CUL-9674 | 1 yd. |
| Fabric F | CUL-9675 | 7/8 yd. |
| Fabric G | CUL-9676 | 7/8 yd. |
| Fabric H | CUL-9677 | 1 yd. |
| Fabric I | CUL-9678 | 1 yd. |
| Fabric J | CUL-9679 | 7/8 yd. |

BACKING FABRIC

CUL-9672 5 3/4 yds. (suggested)

BINDING FABRIC

CUL-9673 (Fabric **D**) (included)

CUTTING DIRECTIONS

1/4" seam allowances are included.
WOF means width of fabric.

- Ten (10) template triangles from fabric **A**
- Ten (10) template triangles from fabric **B**
- Ten (10) template triangles from fabric **C**
- Twelve (12) template triangles from fabric **D**
- Sixteen (16) 3 1/2' x WOF strips from fabric **D**
- Eleven (11) template triangles from fabric **E**
- Ten (10) template triangles from fabric **F**
- Ten (10) template triangles from fabric **G**
- Eleven (11) template triangles from fabric **H**
- Eleven (11) template triangles from fabric **I**
- Ten (10) template triangles from fabric **J**

CONSTRUCTION

Sew all rights sides together with 1/4" seam allowance.

- Referring to the cover picture, arrange triangles into seven rows, with fifteen full triangles in each row.
- Alternate the direction of each triangle's tip, beginning with the first full triangle tip pointing down.
- Cutting the half-triangles: Using the provided template 'B', trim the first and last triangle. Be careful to orient the tip of the template in the right direction. You'll see that you need to flip the template right side down to cut the first half-triangle and flip it right side up to cut the last half-triangle.
- To sew the rows together, place the first two pieces right sides together as shown below.



DIAGRAM 1

- Continue placing triangles together in the same manner to sew the row together, ending with another half triangle.



DIAGRAM 2

ASSEMBLING THE TOP

Sew all rights sides together with 1/4" seam allowance. Press open.

- Attach two of the 3 1/2" x WOF strips from fabric **D** to make a longer strip.
- Determine the width of the first row by measuring through its center.
- Cut the fabric **D** strip to this measurement and attach to the top of the first triangle row.

- Measure through the center of the second triangle row. Make a Fabric **D** strip at this measurement and sew to the bottom of the second triangle row.
- Continue to sew Fabric **D** strips to the bottom of the remaining triangle rows in the same manner.
- Sew all rows together to complete the quilt.

QUILT ASSEMBLY

Sew rights sides together.

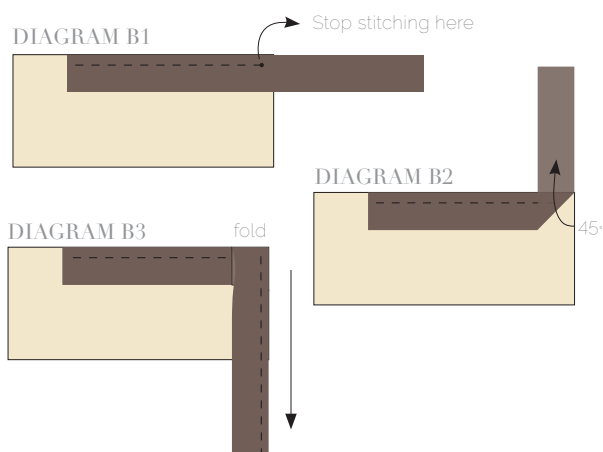
- Place BACKING FABRIC on a large surface wrong side up. Stretch it with masking tape against that surface.
- Place BATTING on top of backing fabric.
- Place TOP on top of the batting with right side facing up. Smooth away wrinkles using your hands.
- Pin all layers together and baste with basting thread, using long stitches. You can also use safety pins to join the layers.
- Machine or hand quilt starting at the center and working towards the corners. Remember that quilting motifs are a matter of personal preference. Have fun choosing yours!
- After you finished, trim excess of any fabric or batting, squaring the quilt to proceed to bind it.

BINDING

Sew rights sides together.

- Cut enough strips $1\frac{1}{2}$ ' wide by the width of the fabric **D** to make a final strip 360' long. Start sewing the binding strip in the middle of one of the sides of the quilt, placing the strip right side down and leaving an approximated 5' tail. Sew with $\frac{1}{4}$ ' seam allowance (using straight stitch), aligning the strip's raw edge with the quilt top's raw edge.
- Stop stitching $\frac{1}{4}$ ' before the edge of the quilt (**DIAGRAM B 1**). Clip the threads. Remove the quilt from under the machine presser foot. Fold the strip in a motion of 45° and upward, pressing with your fingers (**DIAGRAM B2**). Hold this fold with your finger, bring the strip down in line with the next edge, making a horizontal fold that aligns with the top edge of the quilt (**DIAGRAM B3**). Start sewing at $\frac{1}{4}$ ' of the border, stitching all the layers. Do the same in the four corners of the quilt.

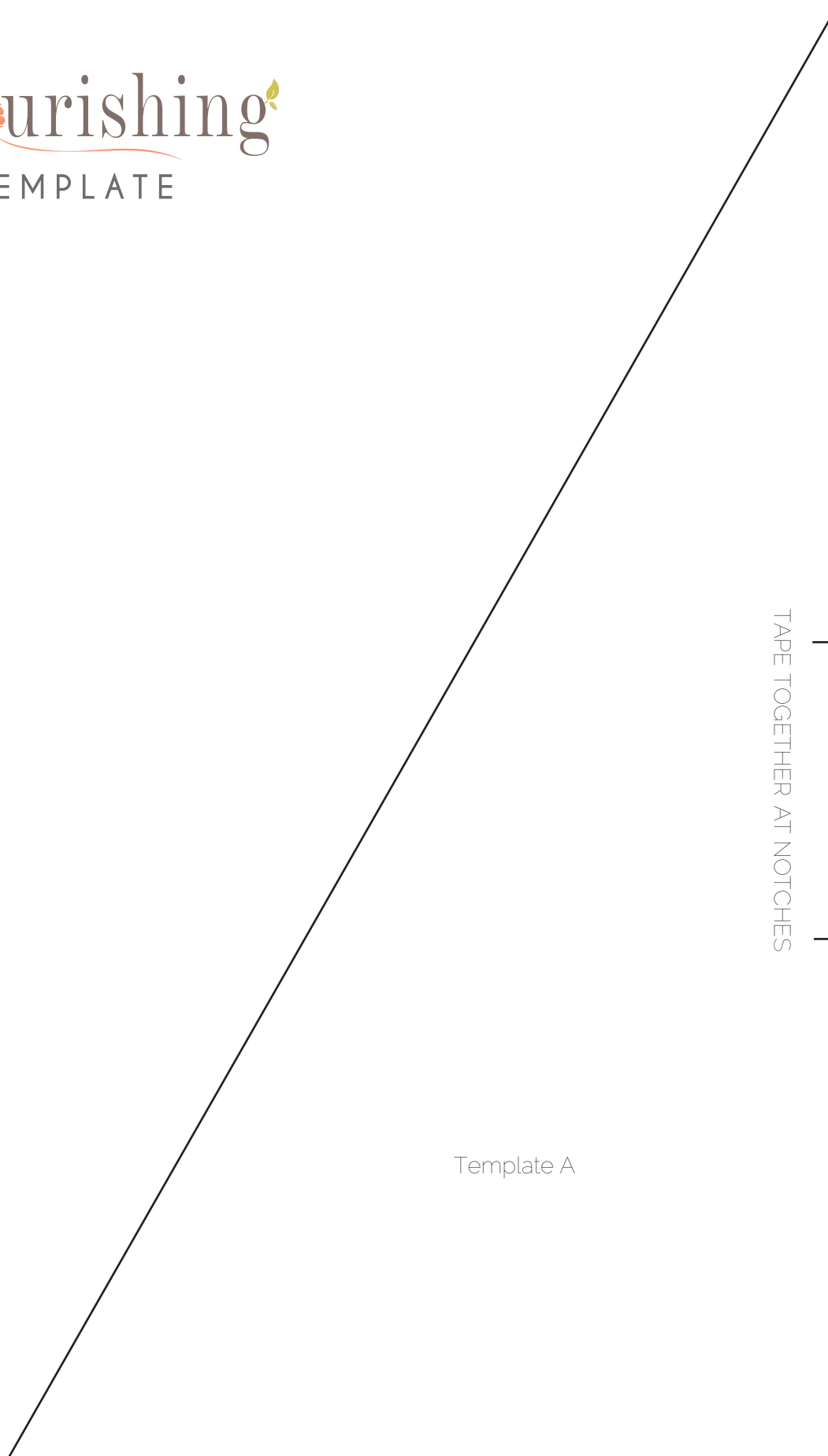
- Stop stitching before you reach the last 5 or 6 inches. Cut the threads and remove the quilt from under the machine presser foot. Lay the loose ends of the binding flat along the quilt edge, folding the ends back on themselves where they meet. Press them together to form a crease. Using this crease as the stitching line, sew the two open ends of the binding with right sides together (you can help yourself marking with a pencil if the crease is difficult to see).
- Trim seam to $\frac{1}{4}$ ' and press open. Complete the sewing. Turn binding to back of the quilt, turn raw edge inside and stitch by hand using blind stitch.



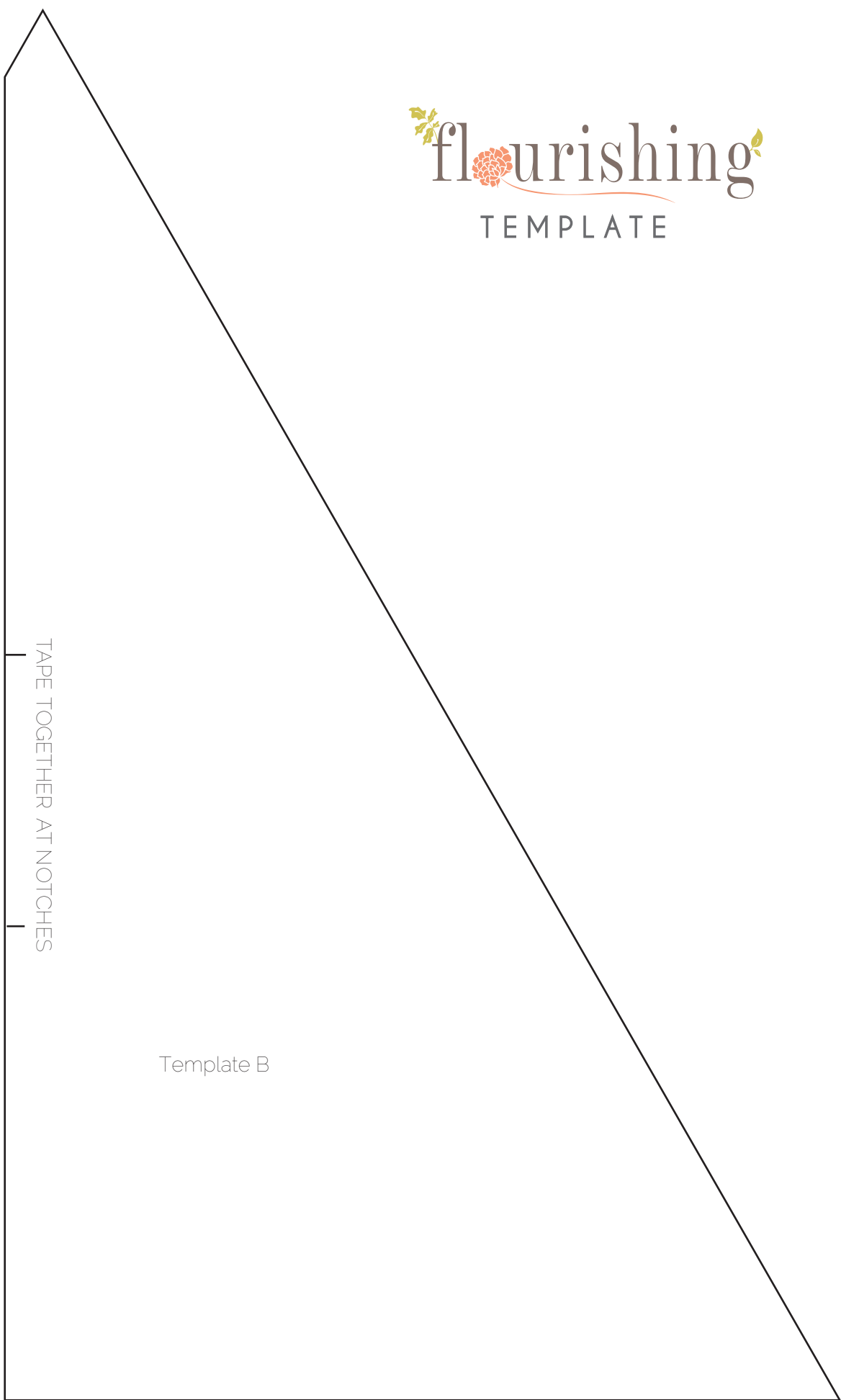
artgalleryfabrics.com

NOTE: While all possible care has been taken to ensure the accuracy of this pattern, We are not responsible for printing errors or the way in which individual work varies. Please read instructions carefully before starting the construction of this quilt. If desired, wash and iron your fabrics before starting to cut.

© 2015 Courtesy of Art Gallery Quilts LLC. All Rights Reserved.



Template A



TAPE TOGETHER AT NOTCHES

Template B