

# Chinese Windows

Designed by Patricia Bravo

Featuring "ORIENTAL" Collection



Free Project Sheet



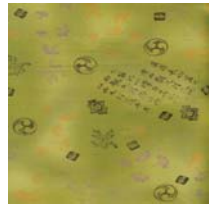
078 LIME



078 TEAL



077 MUSTARD



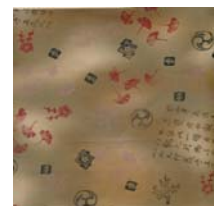
077 OLIVE



078 BLACK



078 SAND



077 TABAC



077 RED



© 2007 Courtesy of Art Gallery Quilts. All rights reserved

570 Golden Beach Dr., Golden Beach, FL 33160. TEL: (305) 420-5399 FAX: (425) 799-6103

for more fabrics and patterns visit our website [www.artgalleryquilts.com](http://www.artgalleryquilts.com)

# Chinese Windows

Finished Size: 62" x 76"  
Block Size: 5"

Quilt designed by Patricia Bravo for *Art Gallery Quilts*

*All seam allowances are 1/4". Please read all directions before beginning and press carefully after each step.*

## Fabric Requirements: ORIENTAL COLLECTION

Fabric A (Oriental Tabac): 1 yard.  
Fabric B (Oriental Sand): 1/2 yard.  
Fabric C (Oriental Olive): 1/2 yard.  
Fabric D (Oriental Lime): 3/8 yard.

Fabric E (Oriental Red): 1/2 yard.  
Fabric F (Oriental Black): 2 yds.  
Fabric G (Oriental Mustard): 1/2 yard.  
Fabric H (Oriental Teal): 1/2 yds.

## Cutting Directions:

### For each block cut:

Fabric A: 18 squares 5-1/2".  
Fabric B: 18 squares 5-1/2".  
Fabric E: 18 squares 5-1/2".  
Fabric C: 16 squares 5-1/2".  
Fabric D: 8 squares 5-1/2".  
Fabric F: 8 squares 8-1/4". Cut them twice diagonally.  
Fabric G: 16 squares 5-1/2".  
Fabric H: 16 squares 5-1/2".

### For the top and bottom borders cut:

Fabric F: 8 strips 12-7/8" by 3-1/2".  
16 strips 3-5/8" by 3-1/2".  
Fabric A: 16 strips 3-5/8" by 3-1/2".

### For the sides borders cut:

Fabric F: 8 strips 16-3/8" by 3-1/2".  
16 strips 4-1/2" by 3-1/2".  
Fabric A: 16 strips 4-1/2" by 3-1/2".

### For the corner unit borders cut:

Fabric F: 8 strips 6-7/8" by 3-1/2".  
Fabric H: 4 squares 3-1/2".



*Quilt Diagram*

## Block Assembly: (*Stitch right sides together and press open after every seam*)

1-For the first corner, stitch two of the triangles of fabric F together (as shown right).



2-For the next row, stitch one of the triangles from fabric F with one square from fabric A. Add one square from fabric H. Add another triangle at the end (as shown right).



For the next rows, keep adding squares in the sequence show at the *Quilt Diagram*.

## Quilt Top Assembly:

Following the quilt diagram above, start piecing the first row to the second row. Go ahead with the third row and all the remaining until you complete all the top. Be careful to match the seams.

## Border Assembly:

### For the top and bottom borders :

1-From the fabrics cut for the top and bottom borders, sew consecutively one rectangle from fabric F, one from A, one from F, and another one from A (as shown below).



2-Add one strip from fabric F on top (as shown below). Make 8 units.



### For the sides borders :

Proceed in the same way as the other border units. Make 8 units.

### For the corner unit borders :

Sew two strips from fabric F to the square from fabric H. Miter the corners. Make 4 units.

Finally, layer, baste, quilt and bind as desired.

*While all possible care has been taken to ensure the accuracy of this pattern, we are not responsible for printing errors or the way in which individual work varies.*



© 2007 Courtesy of Art Gallery Quilts. All rights reserved  
570 Golden Beach Dr., Golden Beach, FL 33160. TEL: (305) 420-5399 FAX: (425) 799-6103

[www.artgalleryquilts.com](http://www.artgalleryquilts.com)