



WEAVED



XXXXXXXXXXXXXXXXXXXXXXXXXXXX

WEAVED

DESIGNED BY AGF STUDIO

AGFstudio



Splendid FUSION

FABRICS DESIGNED BY AGF STUDIO



FUS-SD-1100
COQUET BOUQUET SPLENDID



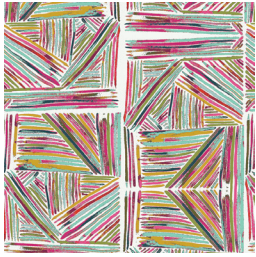
FUS-SD-1101
CROSSTHREAD SPLENDID



FUS-SD-1102
FLOWERED MEDLEY SPLENDID



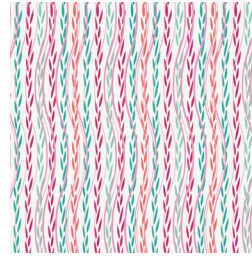
FUS-SD-1103
SHORE REMAINS SPLENDID



FUS-SD-1104
SUNSWEPT CANYON SPLENDID



FUS-SD-1105
NESTING BLOOMS SPLENDID



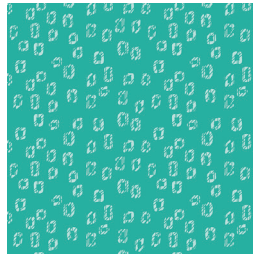
FUS-SD-1106
LEAFY RIBBONS SPLENDID



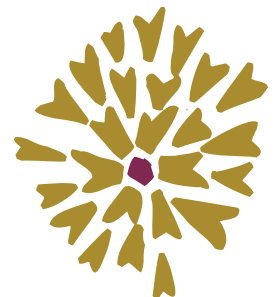
FUS-SD-1107
GARDEN GROUNDS SPLENDID



FUS-SD-1108
PETALLY SPLENDID



FUS-SD-1109
WOODBLOCK SPLENDID





FINISHED SIZE | 12' x 12'

FABRIC REQUIREMENTS

Block 1

Fabric A	FUS-SD-1101	F8
Fabric B	PE-428	F8
Fabric C	PE-451	F8

Block 2

Fabric A	FUS-SD-1108	F8
Fabric B	PE-433	F8
Fabric C	PE-407	F8

Block 3

Fabric A	FUS-SD-1104	F8
Fabric B	PE-466	F8
Fabric C	PE-439	F8

Block 4

Fabric A	FUS-SD-1100	F8
Fabric B	PE-432	F8
Fabric C	PE-438	F8

CUTTING DIRECTIONS

*1/4" seam allowances are included.
WOF means width of fabric.*

Fabric A:

Four (4) $3\frac{1}{2}$ " x $3\frac{1}{2}$ " squares.
Four (4) $3\frac{7}{8}$ " x $3\frac{7}{8}$ " squares.
One (2) $4\frac{1}{4}$ " x $4\frac{1}{4}$ " squares.

Fabric B:

Four (4) $3\frac{7}{8}$ " x $3\frac{7}{8}$ " squares.
One (1) $4\frac{1}{4}$ " x $4\frac{1}{4}$ " squares.

Fabric C:

Four (4) $3\frac{7}{8}$ " x $3\frac{7}{8}$ " squares.
One (1) $4\frac{1}{4}$ " x $4\frac{1}{4}$ " squares.

CONSTRUCTION

Sew all rights sides together with $\frac{1}{4}$ " seam allowance.

- Take one (1) $4\frac{1}{4}$ " x $4\frac{1}{4}$ " squares from fabric A, and one (1) $4\frac{1}{4}$ " x $4\frac{1}{4}$ " square from fabric B to get two (2) $3\frac{7}{8}$ " x $3\frac{7}{8}$ " HST:



DIAGRAM 1

- Take two (2) $3\frac{7}{8}$ " x $3\frac{7}{8}$ " squares from fabric C to get four (4) $3\frac{1}{2}$ " x $3\frac{1}{2}$ " half square triangles (HST).
- Make sure to draw and stitch on the diagonal that crosses fabrics A and B.
- Out of the four (4) squares you will be using only the circled ones.

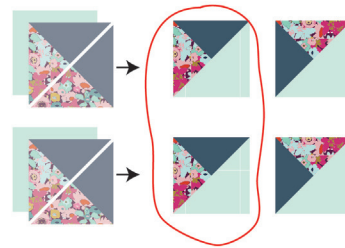


DIAGRAM 2

- Take one (1) $4\frac{1}{4}$ " x $4\frac{1}{4}$ " squares from fabric A, and one (1) $4\frac{1}{4}$ " x $4\frac{1}{4}$ " square from fabric C to get two (2) HSTs:

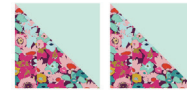


DIAGRAM 3

- Take two (2) $3\frac{7}{8}$ " x $3\frac{7}{8}$ " squares from fabric B to get four (4) $3\frac{1}{2}$ " x $3\frac{1}{2}$ " HSTs.
- Make sure to draw and stitch on the diagonal that crosses fabrics A and C.
- Out of the four (4) squares you will be using only the circled ones.

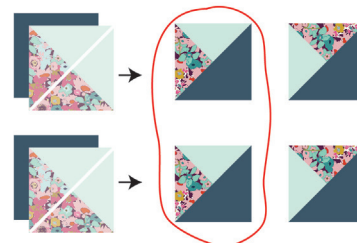


DIAGRAM 4

- Take two (2) $\frac{7}{8}$ " x $\frac{3}{8}$ " squares from fabric **A**, and two (2) $\frac{3}{8}$ " x $\frac{3}{8}$ " squares from fabric **B** to get four (4) $\frac{3}{2}$ " x $\frac{3}{2}$ " HSTs.



DIAGRAM 5

- Take two (2) $\frac{3}{8}$ " x $\frac{3}{8}$ " squares from fabric **A**, and two (2) $\frac{3}{8}$ " x $\frac{3}{8}$ " squares from fabric **C** to get four (4) $\frac{3}{2}$ " x $\frac{3}{2}$ " HSTs.

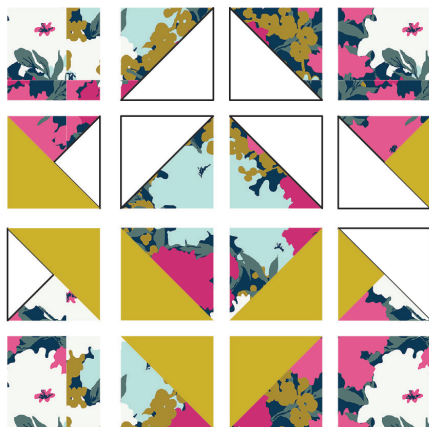


DIAGRAM 6

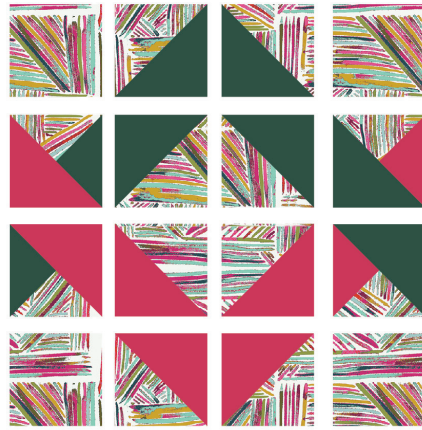
- Join all the pieces following Diagram 7.



Block A



Block B



Block C



Block D

DIAGRAM 7



FEEL THE DIFFERENCE

artgalleryfabrics.com

NOTE: While all possible care has been taken to ensure the accuracy of this pattern, We are not responsible for printing errors or the way in which individual work varies. Please read instructions carefully before starting the construction of this quilt. If desired, wash and iron your fabrics before starting to cut.

© 2018 Courtesy of Art Gallery Quilts LLC. All Rights Reserved.