

x  
x  
x  
x  
x  
x  
x  
x  
x  
x  
x  
x  
x

# TRIANGLE TOTE



FREE PATTERN

x x

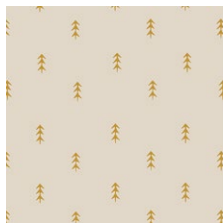


# TRIANGLE TOTE

DESIGNED BY *AGFstudio*



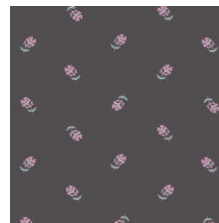
**ATV-87207**  
AUTUMN NECTAR HONEY



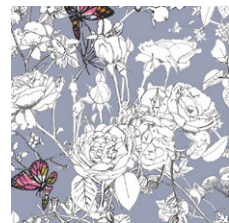
**ATV-87202**  
SIMPLE DEFOLIAGE GOLD



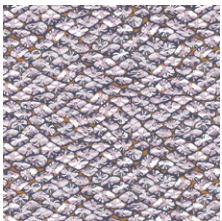
**NTF-77900**  
LUNATION BRIGHT



**FCD-67151**  
SPRINKLED PETALS MOON



**GRI-40400**  
PIXELFLY EDEN LILAC



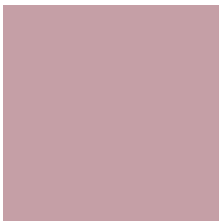
**EAR-43960**  
EARTHING SEEDS



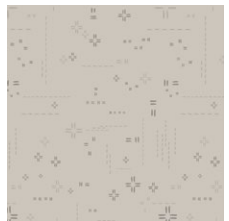
**SPT-95225**  
CALICO DAYS LAVENDER



**PE-430**  
MOONSTONE



**PE-425**  
MAUVELOUS



**DSE-701**  
PORCINI



# TRIANGLE TOTE

FINISHED SIZE | 18" x 20"

## FABRIC REQUIREMENTS

Fabric <b>A</b>	ATV-87207	1/8 yd
Fabric <b>B</b>	GRI-40400	1/8 yd
Fabric <b>C</b>	FCD-67151	5/8 yd
Fabric <b>D</b>	EAR-43960	1/8 yd
Fabric <b>E</b>	PE-430	3/4 yd
Fabric <b>F</b>	SPT-95225	1/8 yd
Fabric <b>G</b>	NTF-77900	1/8 yd
Fabric <b>H</b>	ATV-87202	F8
Fabric <b>I</b>	PE-425	F8
Fabric <b>J</b>	DSE-701	1 1/8 yds

### LINING FABRIC

Fabric **E** PE-430 (Included)

## CUTTING DIRECTIONS

- One (1) 3" x WOF strip from fabric **A**.
- One (1) 3" x WOF strip from fabric **B**.
- One (1) 3" x WOF strip from fabric **C**.
- Two (2) 4" x WOF strips from fabric **C** (straps).
- Two (2) 7½" x 14½" rectangles from fabric **C** (drop in pocket).
- One (1) 3" x WOF strip from fabric **D**.
- One (1) 3" x WOF strip from fabric **E**.
- Two (2) 20½" x 18½" rectangles from fabric **E** (lining).
- One (1) 3" x WOF strip from fabric **F**.
- One (1) 3" x WOF strip from fabric **G**.
- Two (2) of templates from fabric **H**.
- Two (2) of emplates from fabric **I**.
- Twenty six (26) of templates from fabric **J**.
- Seven (7) 1¾" x WOF strips from fabric **J**.
- One (1) 18½" x 20½" rectangle from fabric **J**.

## CONSTRUCTION

- Pair one (1) 3" x WOF strip from fabrics **A-G** with one 1¾" x WOF strip from fabric **J**.
- Take the template and place it on top of your assembled strips and cut six (6) triangles for each.
- Make sure you line up the triangle following the diagram below.

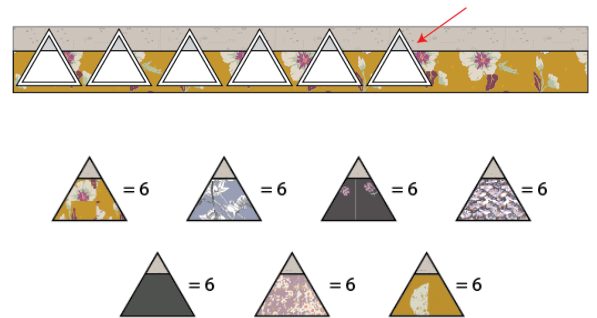


DIAGRAM 1

- Follow the diagram below for each row assembly.

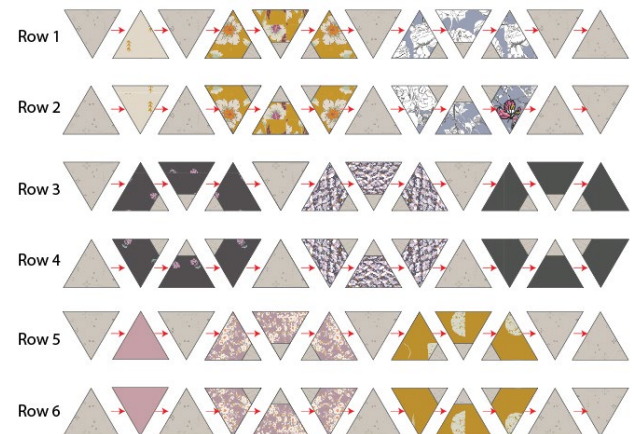


DIAGRAM 2

## LINING & DROP IN POCKET

- Sew rows 1- 6.

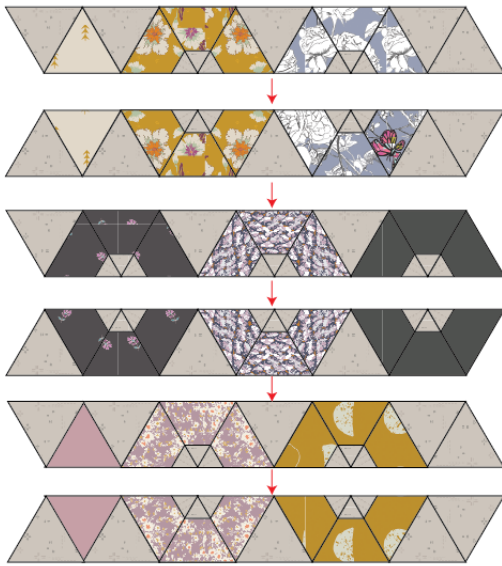


DIAGRAM 3

- Trim the unit so it measures 18½" x 20½".

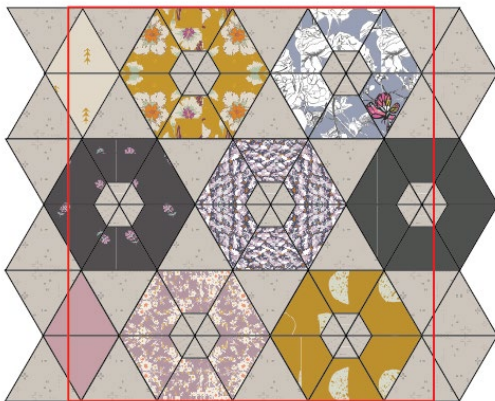


DIAGRAM 4

*Sew rights sides together.*

### Drop in pocket:

- Take one (1) 7½" x 14½" rectangle from fabric **C** and fold it in half, width-wise, right sides facing each other.

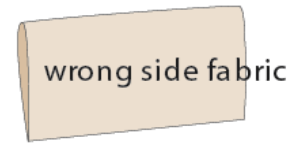


DIAGRAM 5

- Sew right and left side edges, using a ¼" seam allowance. Leave the bottom edge open and un-sewn.

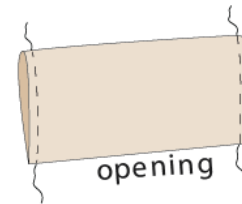


DIAGRAM 6

- Turn the pocket flap inside out and press. Stitch a decorative line ¼" from the folded edge. This will ensure your lined drop-in pocket doesn't wrinkle or buckle during normal use.

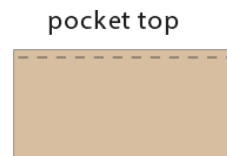


DIAGRAM 7

- Take one (1) one 18½" x 20½" lining piece from fabric **E**.
- Make a mark at about 7"-8" from the top of the bag lining with a water soluble pen.
- Line the bottom open edge of the drop-in pocket up with the marked line on the RIGHT side of the bag lining.
- The top of the pocket should be pointing towards the bottom of the bag.
- Sew one straight line along the bottom edge of the pocket, using a ¼" seam allowance.

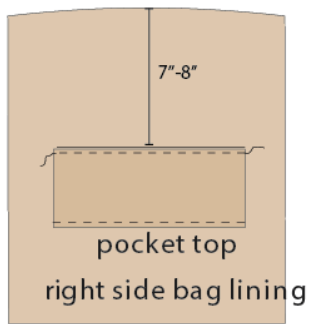


DIAGRAM 8

- Flip the pocket up into its rightful place.
- Edge-stitch the right and left sides of the pocket.
- Backstitch to lock the seams in place, at the beginning and end of each stitching line.

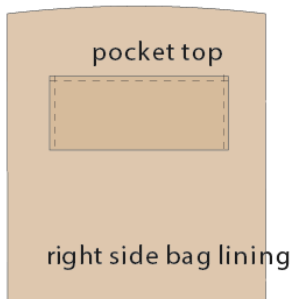


DIAGRAM 9

- Divide the width of this pocket into 3 equal sections and mark these intervals with water soluble pen.
- Make a vertical stitching line through the pocket and lining fabric at each of the intervals. This will create 3 drop in pockets.

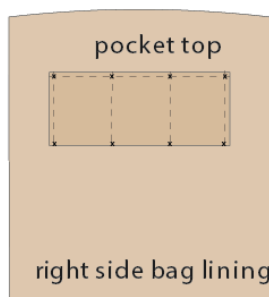


DIAGRAM 10

## Creating Boxed Corners

- Sew front and back tote with right sides together at  $\frac{1}{4}$ " seam allowance. Also sew the two lining pieces from fabric E together but leave a small unsewn portion at the bottom in order to pull right side of the bag through.
- We want to box the interior corners to get a really nice flat bottom on the bag; this way the tote bag will have more body.
- At the corners of your tote draw with a air erasable pen a 1" x 1" square on the wrong side of the fabric. Repeat this process for your front and back tote.
- Take the exterior of the bag (wrong side out) and pinch apart the two layers of the tote to get a little triangle on one corner. Flatten it down a little bit and make sure the top and bottom seams are lined up. Hold it tight.

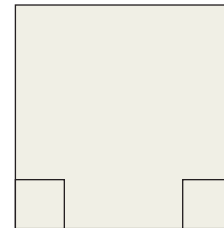


DIAGRAM 11

- Points of the squares you drew on each side of the tote should match up. Pin in place and stitch on the line. Repeat this for the other side of your tote as well as your lining pieces.

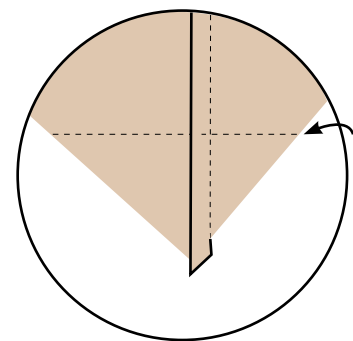


DIAGRAM 12

- Insert the lining inside the tote bag, right sides facing together, making sure sides are touching and pin in place.
- Sew the top of the tote and pull your piece through the lining opening.
- Close the lining opening by hand or machine.
- Press your tote.

### Creating the strap

- Take two (2) 4" x WOF strips from fabric C.
- Fold one strip in half and trim (20 - 21" in) or desired length.
- Fold both long sides of your strip into the center of your strip and then fold in half.
- Press and top stitch both sides of your strap at ¼".

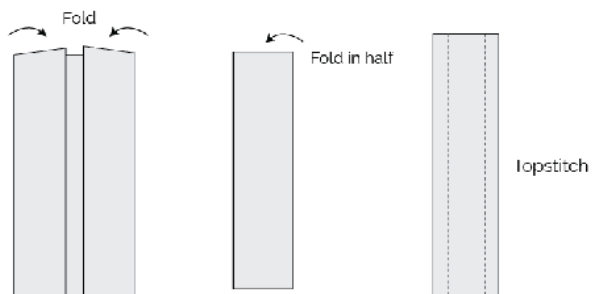


DIAGRAM 13

- Stitch handles ½" facing the right side of the bag.
- Secure the straps by stitching a rectangle on each strap.
- Enjoy your tote!



DIAGRAM 14



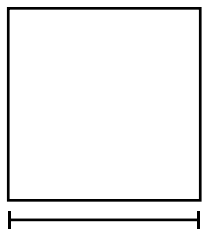
[artgalleryfabrics.com](http://artgalleryfabrics.com)

NOTE: While all possible care has been taken to ensure the accuracy of this pattern, We are not responsible for printing errors or the way in which individual work varies. Please read instructions carefully before starting the construction of this quilt. If desired, wash and iron your fabrics before starting to cut.

© 2020 Courtesy of Art Gallery Quilts LLC. All Rights Reserved.

TEMPLATE

Printer Test



1" Square

