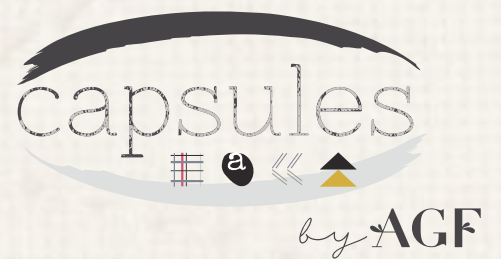
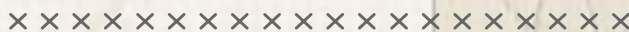




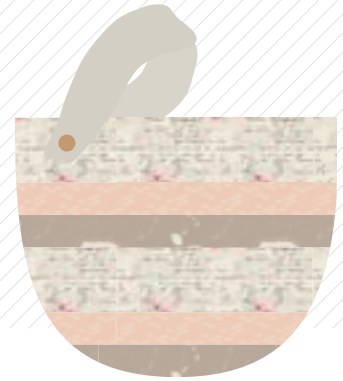
Sweet Adeline



FREE PATTERN



Sweet Adeline

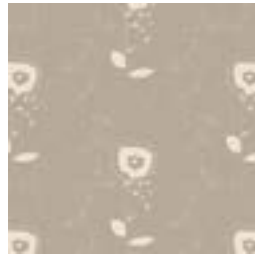


Le Vintage Chic⁺⁺

FABRICS DESIGNED BY AGF STUDIO



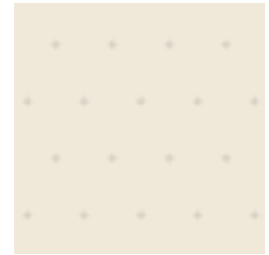
CAP-VC-5000
NOSTALGIC ROMANCE



CAP-VC-5001
PICTURESQUE BLOOM



CAP-VC-5002
VINTAGE FLORETS



CAP-VC-5003
FAINT CHARMS ANTIQUE



CAP-VC-5004
WONDERLUST FIELD



CAP-VC-5005
RUSTIC DIAMONDS



CAP-VC-5006
AMOROUS MANUSCRIPT



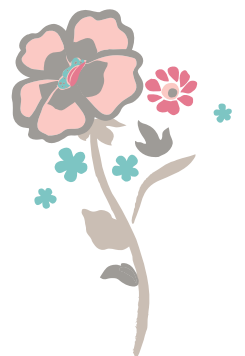
CAP-VC-5007
TENDER GRID



CAP-VC-5008
LABYRINTH IMPRESSION



CAP-VC-5009
NOVA MEADOW



Sweet Adeline

FINISHED SIZE | 14" x 9"

FABRIC REQUIREMENTS

| | | |
|-----------------|-------------|----------|
| Fabric A | CAP-VC-5006 | 1/8 yds. |
| Fabric B | CAP-VC-5007 | 1/8 yd. |
| Fabric C | CAP-VC-5001 | 1/8 yd. |
| Fabric D | Kraftex | 1/8 yd. |

Additional Materials

- 9" Zipper
- Fusible Fleece
- Heavy duty Snaps

CUTTING DIRECTIONS

1/4" seam allowances are included.
WOF means width of fabric.

- Four (4) 16" x 3 1/2" from Fabric **A**
- Four (4) 16" x 1 3/4" rectangles from Fabric **B**
- Two (2) 16" x 1 3/4" rectangles from Fabric **C**
- Two (2) 16" x 2" rectangles from Fabric **C**
- Two (2) 16" x 1 1/2" rectangles of Kraftex

CONSTRUCTION

Sew all rights sides together with 1/4" seam allowance.

- Start by pairing one (1) piece of 16" x 3 1/2" rectangle from Fabric **A** and pair it, right sides together with an 16" x 1 3/4" rectangle from Fabric **B**.
- Now take an 16" x 1 3/4" rectangle from Fabric **C** and pair it, right sides together with the first two pieces already sewn together.
- Repeat same proces until you have the first side of the clutch assembled. (Diagram 1)

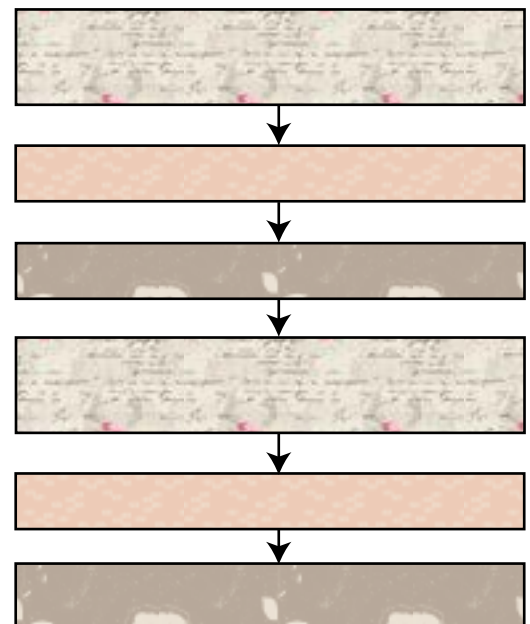


DIAGRAM 1

- Repeat same process for the remaning pieces and you will have your back side of the clutch.
- Feel free to add batting to the back to give the bag more density.
- Also suggested to add a quiltly design to the cover of the bag.
- Next take the clutch template (1 & 2 taped together) below and place over the sewn strips.
- Cut out tracing the template all around for both the front, back, and also the two (2) 20" x 16" rectangles from Fabric **L** (which will be used for lining)



DIAGRAM 2

Zipper Construction

Insert your zipper foot-

- Take lining and front clutch and sandwich them inbetween your 12" zipper.
- Using a zipper foot sew as close to the zipper teeth as possible.
- Sew the two pieces of fabric with right sides together with the zipper sandwiched inbetween the two pieces of fabric (Diagram 3.1 and 3.2)
- Press fabric away from zipper and edge stitch the seam allowance to the lining sewing as close the edge as possible..
- Repeat process for the other side of the zipper using your other lining piece and back clutch.

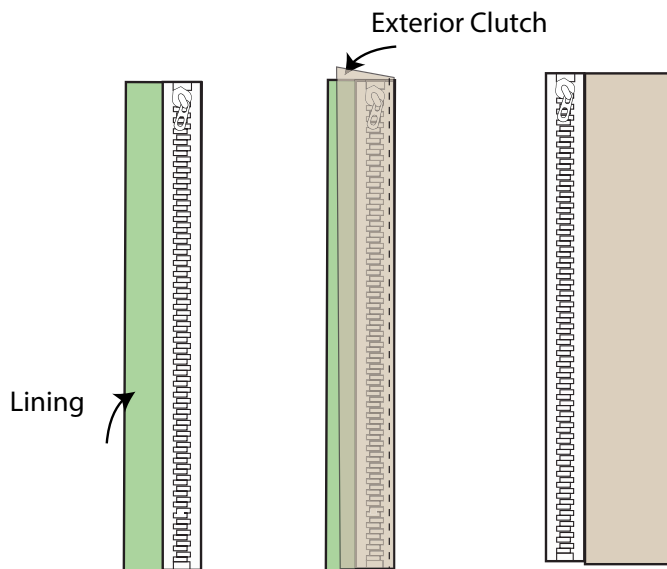


DIAGRAM 3.1

DIAGRAM 3.2

DIAGRAM 3.3

- Unzip zipper. Take the two fronts of the clutch and pin right sides together.
- Take the lining pieces and pin right sides together.
- Sew all the way around bag leaving a unsewn portion in the bottom of the lining of the clutch.
- Pull right side of the fabric through the unsewn portion. Hand stitch or machine stitch unsewn portion closed.
- To place the handle, pair the two (2) 16" x 1½ strips together and stitch all around the edges.
- Now it's time to insert the heavy duty snaps.
- You will decide how you would like for the handle to be tilted.
- After that, measure 2" in from both sides and your top piece. Take your heavy duty snaps and your Kraftex strip and place at this spot Repeat this step for the other side. To insert your snaps follow the instructions on the back of the package.
- Enjoy your cute clutch!



artgalleryfabrics.com

NOTE: While all possible care has been taken to ensure the accuracy of this pattern, We are not responsible for printing errors or the way in which individual work varies. Please read instructions carefully before starting the construction of this quilt. If desired, wash and iron your fabrics before starting to cut.

© 2017 Courtesy of Art Gallery Quilts LLC. All Rights Reserved.

Sweet Adeline

Pattern 1 (left side)

Sweet  *Adeline* 
Pattern 1 (right side)