





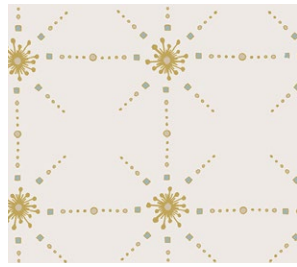
# Stocking

DESIGNED BY AGF STUDIO

## Merry & Bright COLLECTIVE



LTO-8236  
BE MERRY  
by Amy Sinibaldi



FUS-SK-1304  
FROM WITHIN SPARKLER  
by Maureen Cracknell



LTO-8234  
SEASON CAROLS  
by Amy Sinibaldi



LMB-28733  
VALLEY VIEW ECHO  
by Bonnie Christine



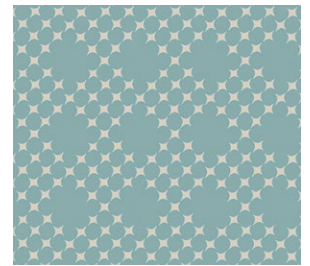
LTO-8237  
BOWTIED  
by Amy Sinibaldi



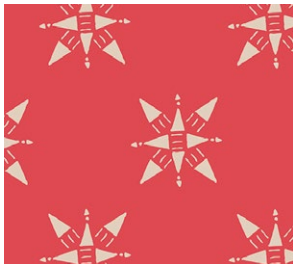
LTO-8231  
WINTERBERRY SPICE  
by Amy Sinibaldi



HRT-85303  
PINETRE DAYBREAK  
by Pat Bravo



FCD-77154  
PIXIE DUST SPARK  
by Maureen Cracknell



LVS-48808  
COMPASSION RUBY  
by Maureen Cracknell



FUS-SK-1309  
DOILAND GLOSS SPARKLER  
by Katarina Roccella



# Stocking

FINISHED SIZE | 12" x 19"

## FABRIC REQUIREMENTS

### Stocking M

Fabric A FUS-SK-1309  $\frac{3}{4}$  yd.

Fabric B LTO-8231 F8

Fabric C DEN-L-4000  $\frac{1}{4}$  yd.

### Stocking D

Fabric A LTO-8236  $\frac{3}{4}$  yd.

Fabric B LTO-8231 F8

Fabric C DEN-L-4000  $\frac{1}{4}$  yd.

### Stocking B

Fabric A HRT-85303  $\frac{3}{4}$  yd.

Fabric B LTO-8231 F8

Fabric C DEN-L-4000  $\frac{1}{4}$  yd.

### Extra Material

Batting 50" x 20" rectangle

## CUTTING DIRECTIONS

$\frac{1}{4}$ " seam allowances are included.  
WOF means width of fabric.

- Two (2) template 1 from fabric A.
- Two (2) template 2 from fabric A.
- Four (4) template 3 from fabric B.
- Two (2) 8" x  $\frac{1}{2}$ " strips from fabric C.
- One (1) 4" x  $1\frac{1}{2}$ " strips from fabric C.

### Initial:

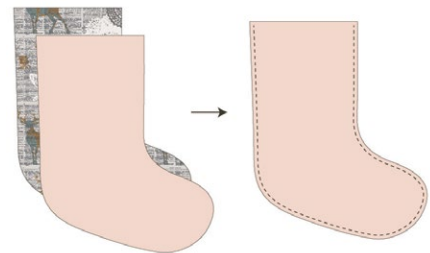
- Use templates 4 - 10 to make the letter of your choice.
- Find letter layouts in actual size in the last five pages right after the templates.

## CONSTRUCTION

Sew all rights sides together with  $\frac{1}{4}$ " seam allowance.

- Take one (1) template 1 from fabric A, one (1) template 2 from fabric A, and two (2) template 3 from fabric B.
- Quilt them separately.
- Align quilted template 1 with quilted template 2 face to face.
- Stitch around the edge except for the top.
- Turn it to the right side.
- Take one (1) template 1 from fabric A and one (1) template 2 from fabric A.
- Align them face to face and stitch around the edge except for the top. This will be the lining of the stocking.
- Insert the lining inside the quilted stocking.

Quilted templates 1 and 2



Templates 1 and 2 for lining



Insert lining into quilted stocking



DIAGRAM 1





































