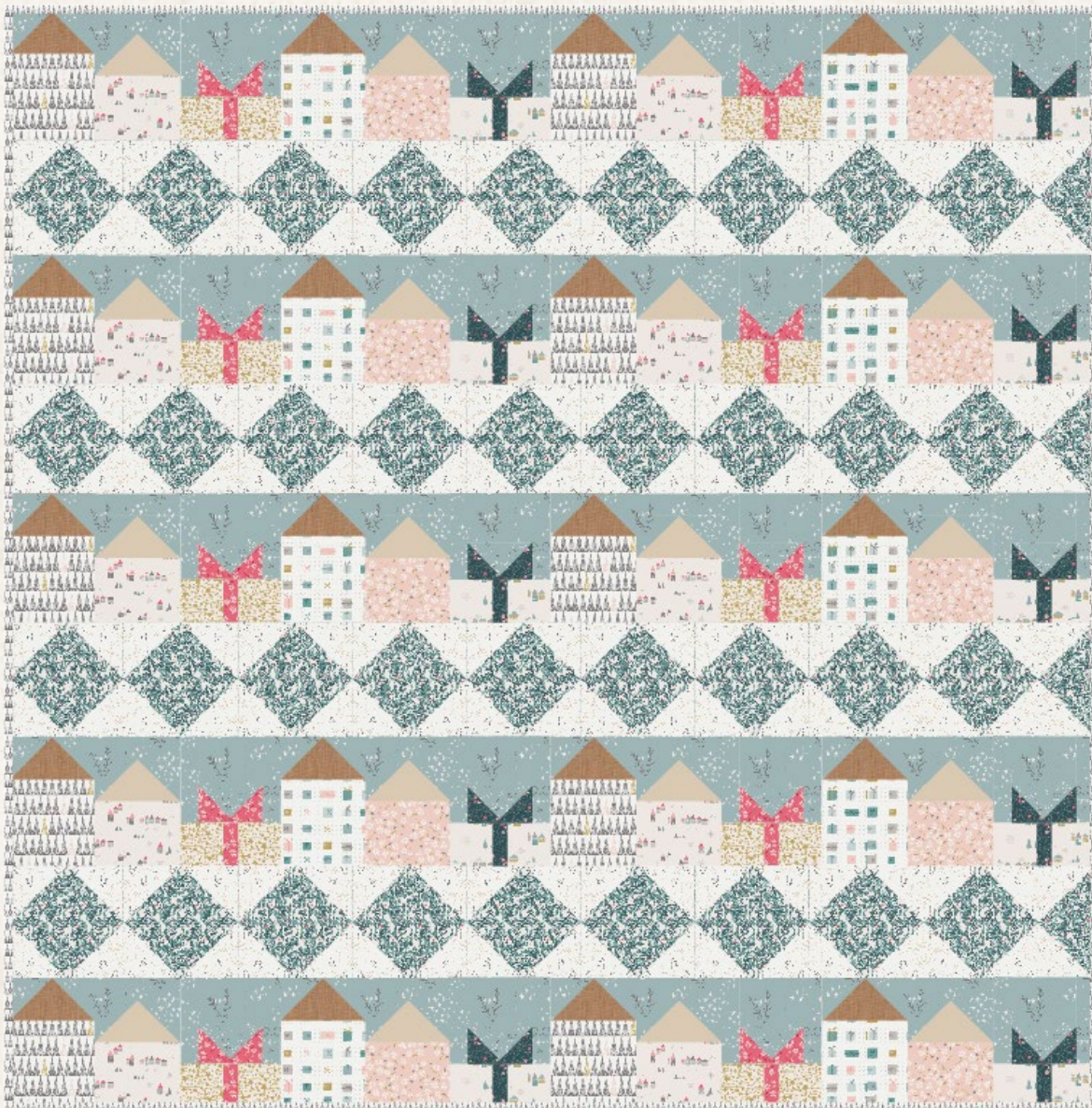




STARRY Sky



ANGLES

A DIVISION OF AGF

FREE PATTERN



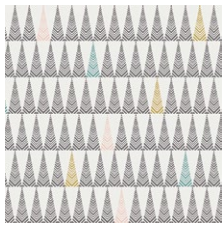
STARRY Sky

QUILT DESIGNED BY AGFstudio

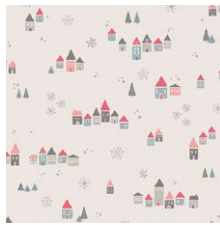


little TOWN

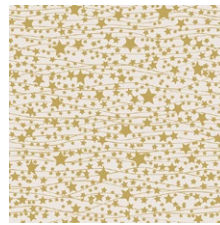
FABRICS DESIGNED BY AMY SINIBALDI



LTO-9233
TREE FARM LIT



LTO-8230
SNOWDRIFT JOY



LTO-9238
TWINKLE STARS



LTO-8234
SEASON CAROLS



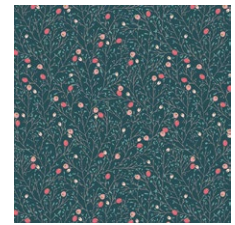
LTO-9239
GIFTED



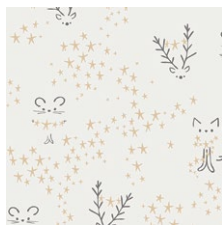
LTO-9234
SEASON WALTZ



LTO-9230
SNOWDRIFT



LTO-8231
WINTERBERRY SPICE



LTO-9232
STARBRIGHT FROST



LTO-8236
BE MERRY



LTO-8232
STARBRIGHT FOG





FINISHED SIZE | 76" x 77"

FABRIC REQUIREMENTS

Fabric A	LTO-9233	$\frac{7}{8}$ yd.
Fabric B	LTO-8230	$\frac{3}{8}$ yd.
Fabric C	LTO-9238	$\frac{1}{4}$ yd.
Fabric D	LTO-8234	$\frac{1}{4}$ yd.
Fabric E	LTO-9239	$\frac{3}{8}$ yd.
Fabric F	LTO-9234	$\frac{3}{8}$ yd.
Fabric G	LTO-9230	$\frac{1}{4}$ yd.
Fabric H	LTO-8231	$\frac{1}{4}$ yd.
Fabric I	DEN-S-2006	$\frac{1}{2}$ yd.
Fabric J	PE-432	$\frac{1}{2}$ yd.
Fabric K	LTO-9232	2 $\frac{1}{4}$ yds.
Fabric L	LTO-8236	2 $\frac{1}{2}$ yds.
Fabric M	LTO-8232	2 yds.

BACKING FABRIC

LTO-8231 5 yds. (suggested)

BINDING FABRIC

Fabric **A** LTO-9233 (included)

CUTTING DIRECTIONS

$\frac{1}{4}$ " seam allowances are included.

WOF means width of fabric.

- Ten (10) 6½" squares from fabric **A**.
- Ten (10) 6½" x 5" rectangles from fabric **B**.
- Twenty (20) 3½" squares from fabric **C**.
- Twenty (20) 3" squares from fabric **D**.
- Ten (10) 3½" x 1½" rectangles from fabric **D**.
- Ten (10) 6½" squares from fabric **E**.
- Ten (10) 6½" x 5" rectangles from fabric **F**.
- Twenty (20) 3½" squares from fabric **G**.
- Twenty (20) 3" squares from fabric **H**.
- Ten (10) 3½" x 1½" rectangles from fabric **H**.
- Twenty (20) 6½" x 3½" rectangles from fabric **I**.

- Twenty (20) 6½" x 3½" rectangles from fabric **J**.
- One hundred and forty four (144) 4½" squares from fabric **K**.
- Four (4) 4⅞" squares from fabric **K**.
- Seventy two (72) 8½" x 4½" rectangles from fabric **L**.
- Four (4) 4⅞" squares from fabric **L**.
- Twenty (20) 5" x 4" rectangles from fabric **M**.
- Twenty (20) 5" x 3" rectangles from fabric **M**.
- Forty (40) 1¾" x 6½" rectangles from fabric **M**.
- Twenty (20) 6½" x 2" rectangles from fabric **M**.
- Eighty (80) 3½" squares from fabric **M**.

CONSTRUCTION

Sew all rights sides together with $\frac{1}{4}$ " seam allowance.

Flying Geese Construction:

- Start with two (2) different flying geese combinations.
- Bring twenty (20) 6½" x 3½" rectangles from fabrics **I** and **J** and forty (forty) 3½" squares from fabric **M**.
- For the first flying geese combination, **MIM**, take two (two) 3½" squares from fabric **M** and one (1) 6½" x 3" rectangle from fabric **I**.
- Place one (1) fabric **M** square on top of the fabric **I** rectangle.
- Align it to the left side of the rectangle, right sides facing together and draw a diagonal line on top of the square following the diagram below.



DIAGRAM 1

- Stitch on the drawn line.
- Trim excess fabric leaving $\frac{1}{4}$ " seam allowance and press seam open.



DIAGRAM 2

- Take another $3\frac{1}{2}$ " square from fabric **M** and align it on the right side of the fabric **I** rectangle, right sides facing together.
- Draw a diagonal line on top of the square.
- Stitch on the drawn line.
- Trim excess fabric leaving $\frac{1}{4}$ " seam allowance and press seam open.
- Repeat these steps to have a total of twenty **MIM** flying geese.



DIAGRAM 3

- Take twenty (20) $6\frac{1}{2}$ " x $3\frac{1}{2}$ " rectangles from fabric **J** and forty (40) $3\frac{1}{2}$ " squares from fabric **M** and repeat the flying geese construction in order to have a total of twenty **MJM** flying geese.

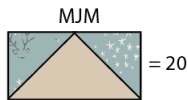


DIAGRAM 4

- Take seventy two (2) $8\frac{1}{2}$ " x $4\frac{1}{2}$ " rectangles from fabric **L** and one hundred and forty four (144) $4\frac{1}{2}$ " squares from fabric **K**.
- Repeat the same flying geese construction to create a total of seventy two **KLK** rectangles.

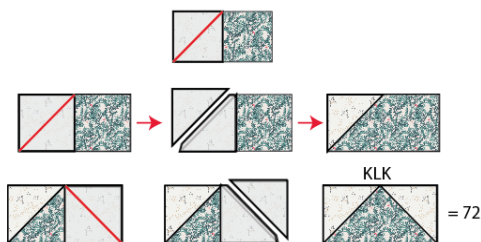


DIAGRAM 5

Half Square Triangle Construction:

- Take two (2) $4\frac{7}{8}$ " squares from fabrics **K** and **L**.
- Draw a line diagonally corner to corner using a mechanical pencil or frixion pen.
- Stitch $\frac{1}{4}$ " on each side from the drawn lines.
- Cut the pieces apart along the marked diagonal line.
- Press seam open and trim to a $4\frac{1}{2}$ " perfect square.

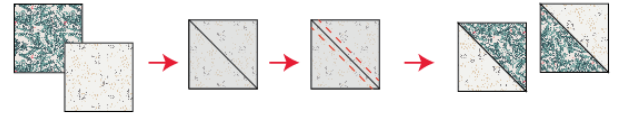


DIAGRAM 6

- Take three (3) $4\frac{7}{8}$ " squares from fabric **K** and **L** and repeat the same instructions to create a total of eight **KL** half square triangles.

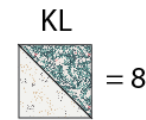


DIAGRAM 7

Creating the houses:

House 1:

- Take one (1) $6\frac{1}{2}$ " square from fabric **A** and one (1) **MIM** flying geese and join **MIM** on the top part of fabric **A** square.
- Repeat the same step creating a total of ten House 1.

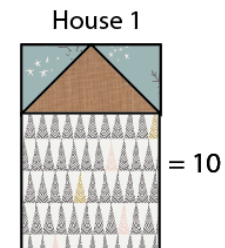


DIAGRAM 8

Gift box 2:

- Take two (2) 3½" squares from fabric **G** and one (1) 3½" x 1½" rectangle from fabric **H**.
- Join one (1) fabric **G** square on the left side on fabric **H** rectangle and another fabric **G** on the right side, following the diagram below.



DIAGRAM 24

- Create a total of ten **GHG** rectangles.



DIAGRAM 25

- To create the bows for gift box 2, take two (2) 3" rectangles from fabric **H** and one 5" x 3" rectangles from fabric **M**.
- Place one (1) fabric **H** rectangle on top of the fabric **M** rectangle.
- Align it to the left side of the rectangle, right sides facing together and draw a diagonal line on top of the square following the diagram below.

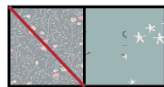


DIAGRAM 26

- Stitch on the drawn line.
- Trim excess fabric leaving ¼" seam allowance and press open.

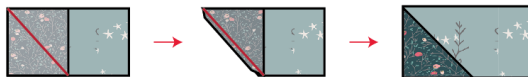


DIAGRAM 27

- Take another 3" rectangles from fabric **H** and align it on the right side of the fabric **M** rectangle, right sides facing together.
- Draw a diagonal line on top of the square.

- Stitch on the drawn line.
- Trim excess fabric leaving ¼" seam allowance and press open.
- Repeat these steps to have a total of ten **HMH** flying geeses.

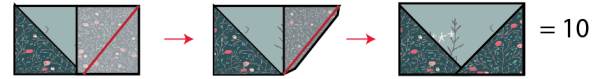


DIAGRAM 28

- Take one (1) 5" x 4" rectangles from fabric **M** and join it on the top part of the **HMH** piece, following the diagram below.



DIAGRAM 30

- Then, take two (2) 1¾" x 6½" rectangles from fabric **M** and join one on each side of the unit.

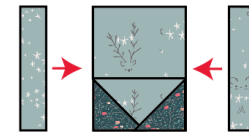


DIAGRAM 31

- Now, join one (1) gift box piece and one bow, following the diagram below.



DIAGRAM 32

- Repeat the previous steps in order to complete a total of ten gift box 2.



DIAGRAM 33

