



# Round Blooms



# FUSIONS

by AGF

FREE PATTERN







QUILT DESIGNED BY AGF STUDIO AGFstudio



# reverie FUSION

FABRICS DESIGNED BY AGF STUDIO



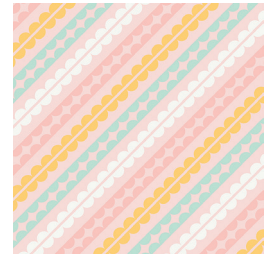
**FUS-R-800**  
SPRAYED BLOOMS REVERIE



**FUS-R-801**  
+ YOUR HEART REVERIE



**FUS-R-802**  
FLORAL FROLIC REVERIE



**FUS-R-803**  
ENTRYWAYS REVERIE



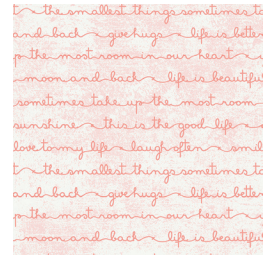
**FUS-R-804**  
AVES CHATTER REVERIE



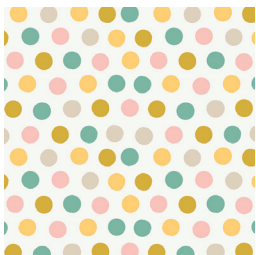
**FUS-R-805**  
I SPY REVERIE



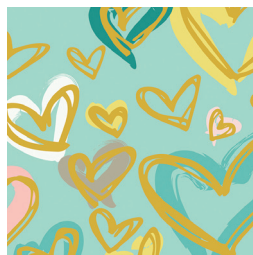
**FUS-R-806**  
ABIDING REVERIE



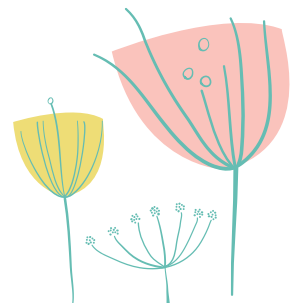
**FUS-R-807**  
HEARTFELT REVERIE



**FUS-R-808**  
COTTONTAILS REVERIE



**FUS-R-809**  
WHERE THE HEART IS REVERIE





FINISHED SIZE | 16' x 16'

## FABRIC REQUIREMENTS

Fabric **A** DEN-S-2004 ⅓ yd.  
 Fabric **B** FUS-R-805 ¼ yd.  
 Fabric **C** FUS-R-805 1 ½ yd.

Lining

Fabric **C** FUS-R-805 (*suggested*)

## CUTTING DIRECTIONS

¼" seam allowances are included.  
 WOF means width of fabric.

- Eight (8) strips of 18 ½" x 2 ½" from fabric **A**
- Two (2) strips of 27 ½" x 2" from fabric **A**
- One (1) strip of 22 ½" x 2" from fabric **A**
- Eight (8) strips of 18 ½" x 1 ½" from fabric **B**
- Two (2) strips of 4" x 23" from fabric **B (handle)**
- Six (6) strips of 18 ½" x 3" from Fabric **C**

## CONSTRUCTION

Sew all right sides together with ¼" seam allowance.

- Start by pairing an 18 ½" x 2 ½" Fabric **A** strip with an 18 ½" x 1 ½" strip from Fabric **B**.
- Now pair an 18 ½" x 3" strip from Fabric **C** with the previous piece.
- Now pair an 8 ½" x 1 ½" strip from Fabric **B** with the previous piece.
- Repeat the same order process until you finish assembling both front and back.



DIAGRAM 1

- Quilt as desired using backing fabric.
- Now, take one of the assembled pieces and fold in half (strips need to be facing vertically).
- With the radius, which is 8 ¼", trace your half circle
- Pin the fabric so it doesn't shift while cutting it.
- Once cut the fabric, unfold the piece and you should have a full circle



DIAGRAM 2

- Repeat the same process for the other piece.

### Zipper Construction

- Take an 22 ½" x 2 strips from Fabric **A** and cut in half in order to attach the zipper.
- Insert your zipper foot-
- Take front bag and your 12" zipper.
- Using a zipper foot sew as close to the zipper teeth as possible.
- Repeat process for the other side of the zipper using your other half strip piece and back of bag.
- Make sure to add batting for structure

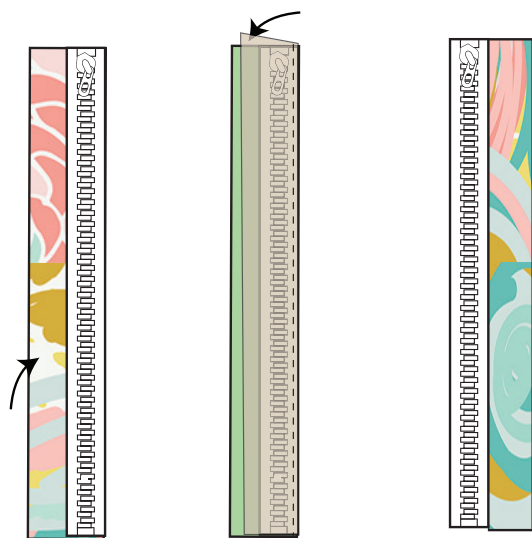


DIAGRAM 3

- Now, take the 27 ½x 2" strips and sew them all around right sides together leaving both ends open.
- Flip the fabric inside out.
- Take the zipper strip and the 27 ½"x strip and sew one side only.



DIAGRAM 4

- Now, before you start pairing the long strip to one of the circle piece, you need to rotate to a 45° angle so you have the bag front and back with the stripe diagonally.



DIAGRAM 5

- Pin the strip along the circle, making sure the zipper part is on the center half of the bag.
- Place the handles ( already sewn together and topstitched) in between the zipper strip and the circle bag piece.
- Sew all around

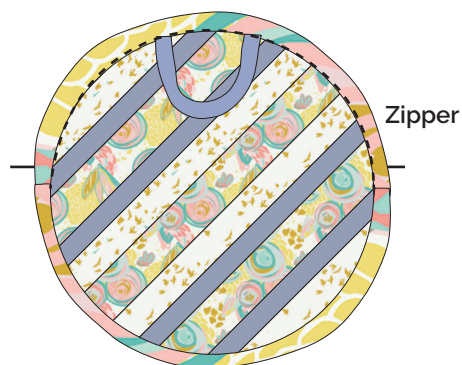


DIAGRAM 6

- Now, take the other side of the circle bag and pair it with the front side of the bag.
- Make sure you place the other handle piece.
- Sew all around, leaving an unsewn portion on the bottom, or leave a small portion of the zipper open and you will be able to open the bag later.
- For the raw edges, you may use binding with the color of your choice.
- Pull right side of the fabric through the unsewn portion. Hand stitch or machine stitch unsewn portion closed.
- Enjoy your Round Blooms Bag !!!



[artgalleryfabrics.com](http://artgalleryfabrics.com)

*NOTE: While all possible care has been taken to ensure the accuracy of this pattern, We are not responsible for printing errors or the way in which individual work varies. Please read instructions carefully before starting the construction of this quilt. If desired, wash and iron your fabrics before starting to cut.*

© 2017 Courtesy of Art Gallery Quilts LLC. All Rights Reserved.