

road map

X
X
X
X
X
X
X
X
X
X
X
X
X
X
X
X



ANGLES

FREE PATTERN

XXXXXXXXXXXXXXXXXXXXXXXXXXXXXXXXXXXX

A DIVISION OF AGF

road map.

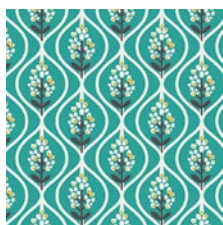
DANA WILLARD

QUILT DESIGNED BY DANA WILLARD

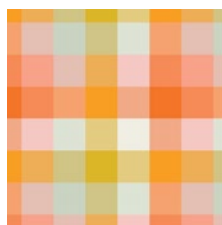


FABRICS DESIGNED BY DANA WILLARD

SUMMER PICNIC



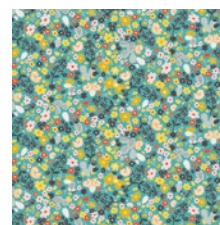
DAT-89400
BLUEBONNET DUSK



DAT-89401
PICNIC PLAID



DAT-89403
CACTUS BLOOM NOON



DAT-89404
SUMMER FIELD



DAT-89405
TACO LOVE LIGHT



DAT-89406
JOYRIDE NIGHT

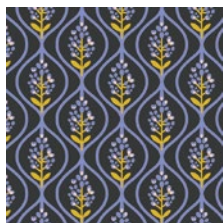


DAT-89407
SCATTERED SHOWERS WARM



DAT-89408
PRICKLY

WINTER BREAK



DAT-99400
BLUEBONNET MIDNIGHT



DAT-99402
GRAZING GOATS



DAT-99403
CACTUS BLOOM MOONLIGHT



DAT-99404
WINTER FIELD



DAT-99405
TACO LOVE BRIGHT



DAT-99406
JOYRIDE DAY



DAT-99407
SCATTERED SHOWERS COOL



DAT-99409
PARALLEL PARKING



road map.

FINISHED SIZE | 55" x 66"

FABRIC REQUIREMENTS

Fabric A	DAT-89400	¾ yd.
Fabric B	DAT-99405	¾ yd.
Fabric C	DAT-89407	¾ yd.
Fabric D	DAT-99400	¾ yd.
Fabric E	DAT-99407	¾ yd.
Fabric F	PE- 408	1 ⅝ yd.
Fabric G	PE- 420	½ yd.

BACKING FABRIC

DAT-99409 4 yds. (Suggested)

BINDING FABRIC

PE-420- (Fabric **G**) (included)

CUTTING DIRECTIONS

¼" seam allowances are included.
WOF means width of fabric.

- Eight (8) 2¼" x 6" rectangles from fabric **A**
- Six (6) 6" x 6" squares from fabric **A**
- Five (5) 2¼" x 11½" rectangles from fabric **A**
- Seven (7) 2¼" x 6" rectangles from fabric **B**
- Seven (7) 6" x 6" squares from fabric **B**
- Five (5) 2¼" x 11½" rectangles from fabric **B**
- Seven (7) 2¼" x 6" rectangles from fabric **C**
- Five (5) 6" x 6" squares from fabric **C**
- Six (6) 2¼" x 11½" rectangles from fabric **C**
- Seven (7) 2¼" x 6" rectangles from fabric **D**
- Seven (7) 6" x 6" squares from fabric **D**
- Five (5) 2¼" x 11½" rectangles from fabric **D**
- Seven (7) 2¼" x 6" rectangles from fabric **E**
- Five (5) 6" x 6" squares from fabric **E**
- Six (6) 2¼" x 11½" rectangles from fabric **E**

Thirty six (36) 4 ¼" x 6" rectangle from Fabric **F**

Twenty seven (27) 4 ¼" x 11 ½" rectangle from Fabric **F**

CONSTRUCTION

Sew all rights sides together with ¼" seam allowance.

- Pair each 2¼" x 6" piece to an 4¼" x 6" piece, to create an 6" x 6" square, for the following fabrics, as diagram below:

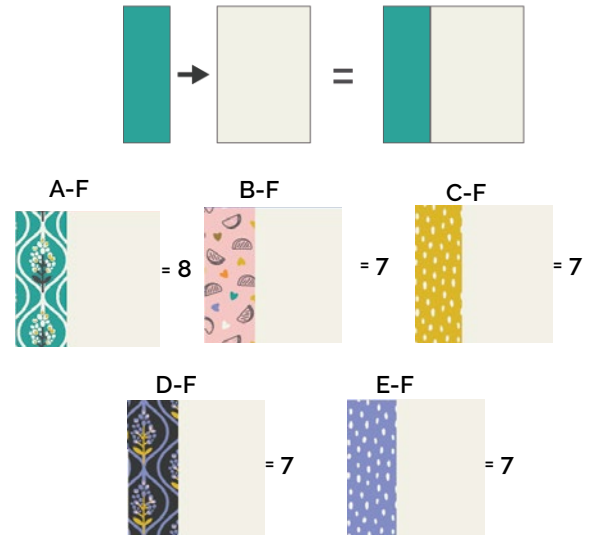


DIAGRAM 1

- Pair each 2¼" x 11½" piece to an 4¼" x 11½" piece, to create an 6" x 11½" rectangle, for the following fabrics, as diagram below:

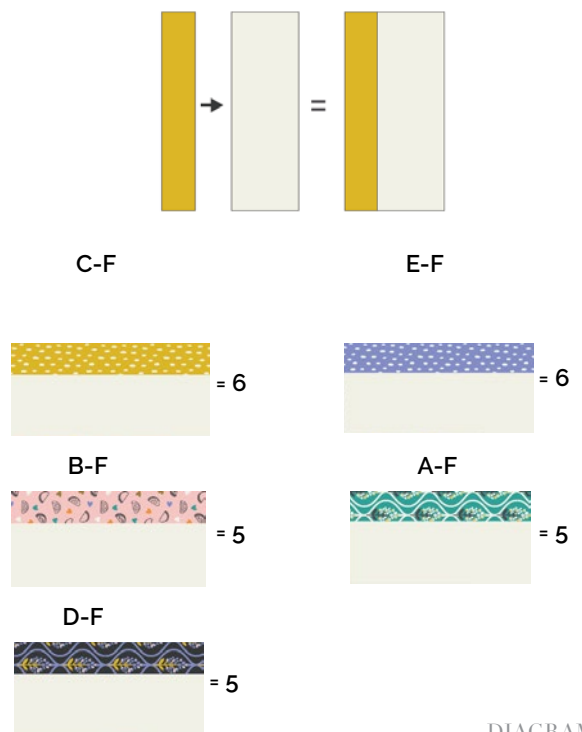


DIAGRAM 2

- Pair the squares and rectangle pieces together to create twelve (12) row as shown in the diagram below.

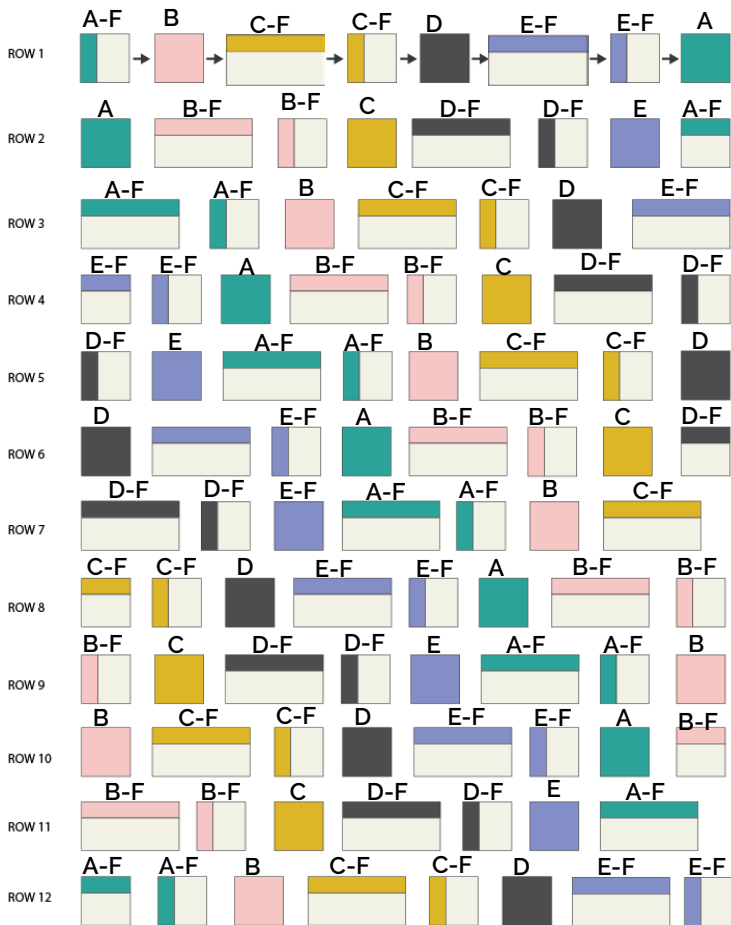


DIAGRAM 3

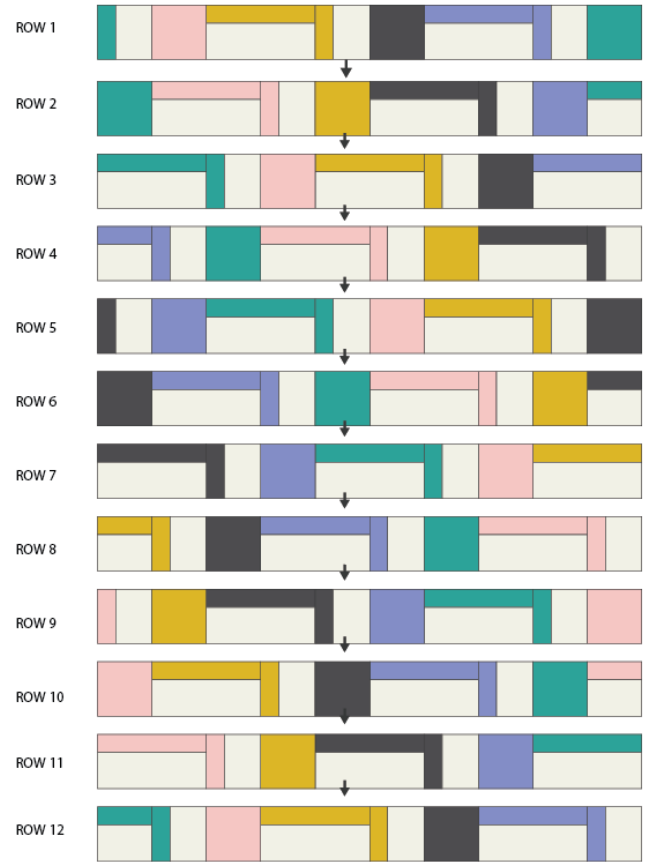


DIAGRAM 4

ASSEMBLING THE QUILT TOP

Sew all rights sides together with $\frac{1}{4}$ " seam allowance. Press open.

- Refer to the cover quilt illustration and the diagram below to assemble the quilt top.

QUILT ASSEMBLY

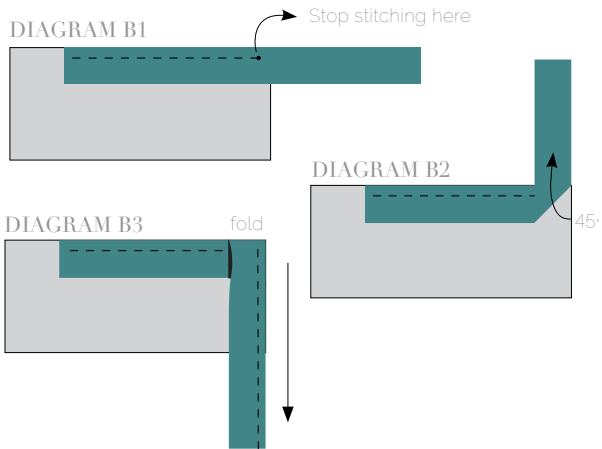
- Cut Backing Fabric into 2 equal rectangles, each 2 $\frac{1}{4}$ yd. x WOF. Trim off selvage edges and sew them together along this lengthwise edge, right sides together. Press open the seam.
- Place BACKING FABRIC on a large surface wrong side up. Stretch it with masking tape against that surface.
- Place BATTING on top of backing fabric.
- Place TOP on top of the batting with right side facing up. Smooth away wrinkles using your hands.
- Pin all layers together and baste with basting thread, using long stitches. You can also use safety pins to join the layers.

- Machine or hand quilt starting at the center and working towards the corners. Remember that quilting motifs are a matter of personal preference. Have fun choosing yours!
- After you finished, trim excess of any fabric or batting, squaring the quilt to proceed to bind it.

BINDING

Sew rights sides together.

- Cut enough strips $1\frac{1}{2}$ ' wide by the width of the fabric **G** to make a final strip 242' long. Start sewing the binding strip in the middle of one of the sides of the quilt, placing the strip right side down and leaving an approximated 5" tail. Sew with $\frac{1}{4}$ " seam allowance (using straight stitch), aligning the strip's raw edge with the quilt top's raw edge.
- Stop stitching $\frac{1}{4}$ " before the edge of the quilt (**DIAGRAM B 1**). Clip the threads. Remove the quilt from under the machine presser foot. Fold the strip in a motion of 45° and upward, pressing with your fingers (**DIAGRAM B 2**). Hold this fold with your finger, bring the strip down in line with the next edge, making a horizontal fold that aligns with the top edge of the quilt (**DIAGRAM B 3**). Start sewing at $\frac{1}{4}$ " of the border, stitching all the layers. Do the same in the four corners of the quilt.



- Stop stitching before you reach the last 5 or 6 inches. Cut the threads and remove the quilt from under the machine presser foot. Lay the loose ends of the binding flat along the quilt edge, folding the ends back on themselves where they meet. Press them together to form a crease. Using this crease as the stitching line, sew the two open ends of the binding with right sides together (you can help yourself marking with a pencil if the crease is difficult to see).

- Trim seam to $\frac{1}{4}$ " and press open. Complete the sewing. Turn binding to back of the quilt, turn raw edge inside and stitch by hand using blind stitch.
- Congrats! You've finished your Road Map Quilt!



artgalleryfabrics.com

NOTE: While all possible care has been taken to ensure the accuracy of this pattern, We are not responsible for printing errors or the way in which individual work varies. Please read instructions carefully before starting the construction of this quilt. If desired, wash and iron your fabrics before starting to cut.

© 2018 Courtesy of Art Gallery Quilts LLC. All Rights Reserved.