

X  
X  
X  
X  
X  
X  
X  
X  
X  
X  
X  
X  
X  
X  
X

# Radiance



FREE PATTERN

XXXXXXXXXXXXXXXXXXXXXXXXXXXX

# Radiance



FABRICS DESIGNED  
BY JESSICA SWIFT



DAY BREAK



LGU-67100  
SOVA DAYGLOW



LGU-67102  
SLEEP TIGHT DAYDREAM



LGU-67103  
LUMINA DAWN



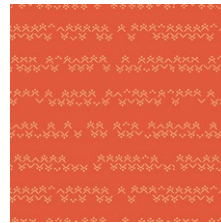
LGU-67104  
ODYSSEY AURORA



LGU-67105  
EFFLORESCENT VIVID



LGU-67101  
KONSTELACIJA MAAGIA



LGU-67106  
TEKSTIIL EMBERGLOW

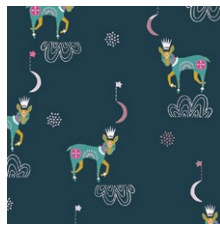


LGU-67107  
NAKTIS VIRIDIS

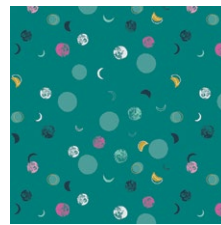
ULTRA VIOLET



LGU-57100  
SOVA NIGHTLIGHT



LGU-57102  
SLEEP TIGHT NIGHTFALL



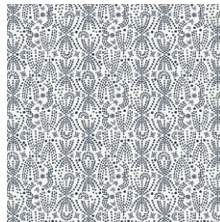
LGU-57103  
LUMINA DUSK



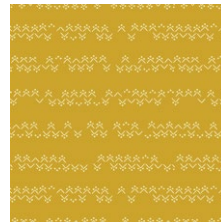
LGU-57104  
ODYSSEY DEWDROP



LGU-57105  
EFFLORESCENT OPULENT



LGU-57101  
KONSTELACIJA VALGE



LGU-57106  
TEKSTIIL SOLARFLAME



LGU-57107  
NAKTIS CIRSIUM



# Radiance

FINISHED SIZE | 18" x 18"

## FABRIC REQUIREMENTS

Fabric A	LGU-57106	F8
Fabric B	LGU-57101	½yd
Fabric C	PE-428	⅝yd
Fabric D	PE-475	F8
Fabric E	PE-407	F8
Fabric F	PE-424	F8

### BACKING FABRIC

PE-428 (included)

### ADDITIONAL MATERIAL

Steam-a-seam double side fusible tape

## CUTTING DIRECTIONS

¼" seam allowances are included.  
WOF means width of fabric.

One (1) of Template 2 from fabric A

One (1) of Template 3 from fabric B

One (1) 18½" x 18½" square from Fabric B

Two (2) 3 ½" x 3 ½" square from Fabrics D, E

One (1) of Template 1 from Fabric F

## CONSTRUCTION

Sew all rights sides together with ¼" seam allowance.

- Take (1) 3 ½" x 3 ½" square from Fabric D and place it on the top corner right of Fabric C 18½" x 18½" square.
- Stitch at the diagonal
- Trim at a ¼" seam.
- Press and steam



DIAGRAM 1

- Repeat the same process for all four sides as in the diagram below.



DIAGRAM 2

- Take Template 3 and place it on top of your pillow top, making sure is centered.
- Place Template 2, then last, place Template 1
- Press and steam
- Top stitch the edges



- This pillow is quilted with different color thread. Use desired thread color to quilt your pillow top.

## CREATING THE BACK PILLOW

*Sew all rights sides together with 1/4" seam allowance. Press open.*

- To make a envelope back for your pillow take both 18½" x 14½" rectangles and fold one 14½" side on each rectangle in 1/2" and press and then fold another 1/2" and press.
- Top stitch as close to the edge as possible.
- Place rectangles right side together on top of each other to the front of your pillow and stitch all the way around your pillow at 1/4" seam allowance.
- Clip corners at seam allowance and flip piece to the right side of the fabric.
- Fill pillow with a 18" x 18" pillow form and enjoy!

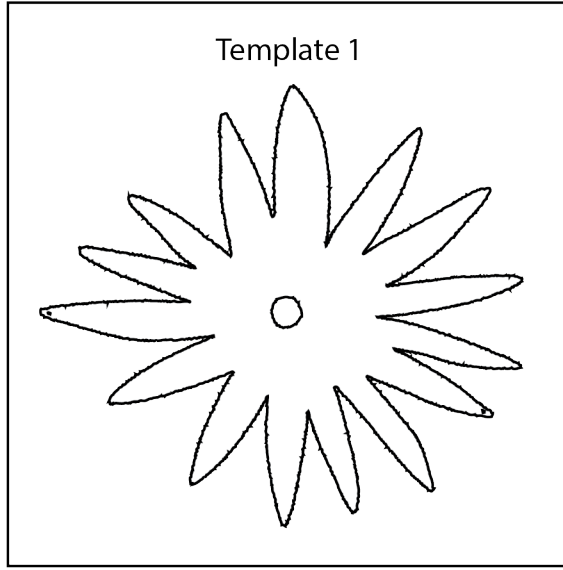


[artgalleryfabrics.com](http://artgalleryfabrics.com)

NOTE: While all possible care has been taken to ensure the accuracy of this pattern, We are not responsible for printing errors or the way in which individual work varies. Please read instructions carefully before starting the construction of this quilt. If desired, wash and iron your fabrics before starting to cut.

TEMPLATES

Template 1



Template 2

