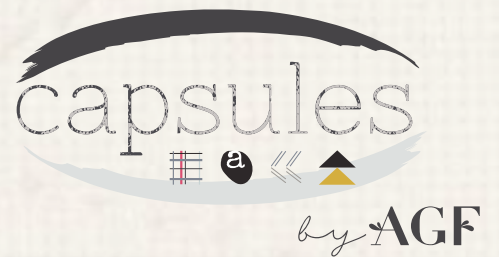


Nostalgic Diamonds





QUILT DESIGNED BY AGF STUDIO AGFstudio



Le Vintage Chic⁺

FABRICS DESIGNED BY AGF STUDIO



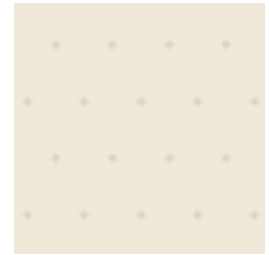
CAP-VC-5000
NOSTALGIC ROMANCE



CAP-VC-5001
PICTURESQUE BLOOM



CAP-VC-5002
VINTAGE FLORETS



CAP-VC-5003
FAINT CHARMS ANTIQUE



CAP-VC-5004
WONDERLUST FIELD



CAP-VC-5005
RUSTIC DIAMONDS



CAP-VC-5006
AMOROUS MANUSCRIPT



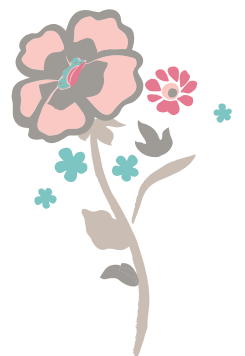
CAP-VC-5007
TENDER GRID



CAP-VC-5008
LABYRINTH IMPRESSION



CAP-VC-5009
NOVA MEADOW



FINISHED SIZE | 16' x 16'

FABRIC REQUIREMENTS

Fabric A	CAP-VC-5000	1/8 yd.
Fabric B	CAP-VC-5007	1/6 yd.
Fabric C	PE-451	1/8 yd.
Fabric D	DEN-SB-7000	1/8 yd.
Fabric E	PRE-814	1/4 yd.

BACKING FABRIC

DEN-SB-7000- (Suggested) 1/2 yds.

BINDING FABRIC

Fabric **B** - (Included)

CUTTING DIRECTIONS

1/4" seam allowances are included.
WOF means width of fabric.

- Ten (10) Pattern piece from Fabric **A**
- Ten (10) Pattern piece from Fabric **B**
- Ten (10) Pattern piece from Fabric **C**
- Ten (10) Pattern piece from Fabric **D**
- Forty (40) Pattern piece from Fabric **E**

CONSTRUCTION

Sew all rights sides together with 1/4" seam allowance.

Start by folding Fabric **A** in half, right sides facing, and trace the Pattern piece.

Once you cut, you will have two (2) Pattern pieces of Fabric **A**.

Repeat same process until you have a total of ten (10) Pattern pieces for Fabric **A, B, C, D**, and forty (40) from Fabric **E**.

Start by folding Fabric **A** in half, right sides facing, and trace the Pattern piece.

Once you cut, you will have two (2) Pattern pieces of Fabric **A**.

Repeat same process until you have a total of ten (10) Pattern pieces for Fabric **A, B, C, D**, and forty (40) from Fabric **E**.

Now, pair a Fabric **E** piece, right sides together, with an Fabric **A** piece.

You will pair fabrics **E-A** with diagonal going from left to right up and **A-E**, with diagonal going from left to right down.

Now, pair fabrics **E-A** with diagonal going from left to right down and **A-E**, with diagonal going from left to right up.

Then, pair the top half diamond and pair it, right sides facing with the bottom half diamond and sew.

You will have two and a half diamonds with Fabrics **E & A**. (Diagram 1)

2 diamonds



half of diamond

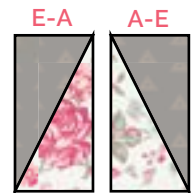
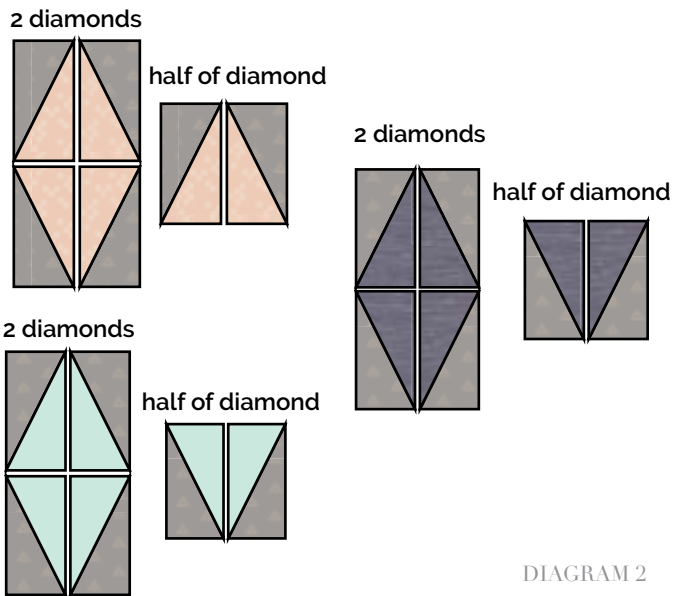


DIAGRAM 1

Repeat same process by pairing Fabric **E-B, E-C, E-D** as diagram below. (Diagram 2)

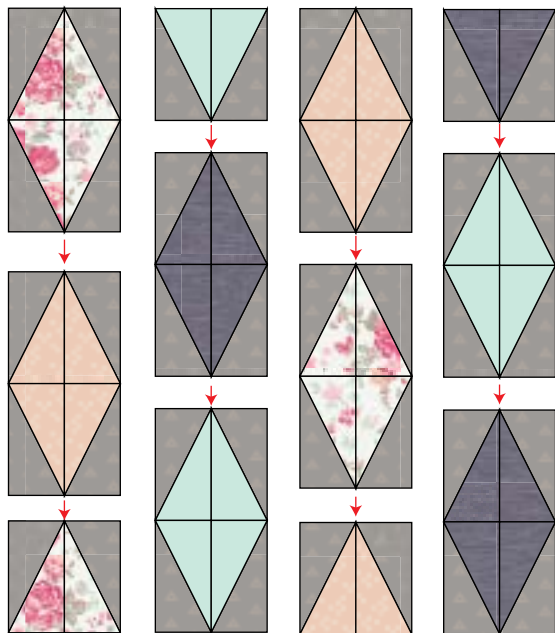


ASSEMBLING THE QUILT TOP

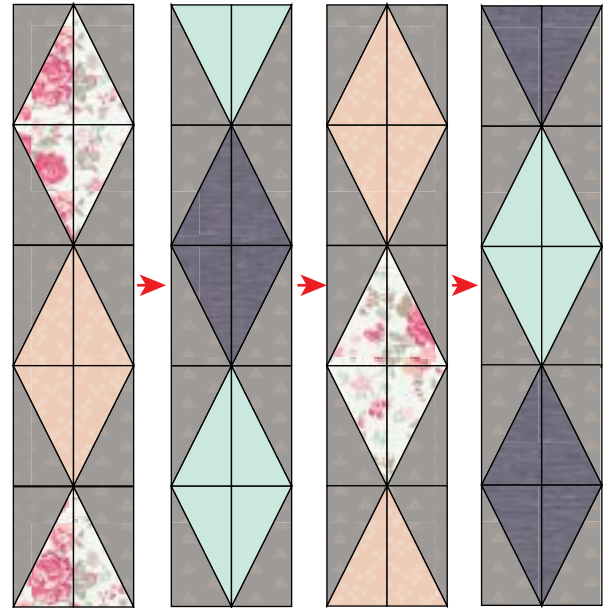
*Sew all rights sides together with 1/4" seam allowance.
Press open.*

Refer to the cover quilt illustration and the diagram below to assemble the quilt top.

Next, assemble column first and then sew rows together to complete quilt top.



Once you have all 4 columns, assemble them as diagram below.



QUILT ASSEMBLY

Sew rights sides together.

- Place BACKING FABRIC on a large surface wrong side up. Stretch it with masking tape against that surface.
- Place BATTING on top of backing fabric.
- Place TOP on top of the batting with right side facing up. Smooth away wrinkles using your hands.
- Pin all layers together and baste with basting thread, using long stitches. You can also use safety pins to join the layers.
- Machine or hand quilt starting at the center and working towards the corners. Remember that quilting motifs are a matter of personal preference. Have fun choosing yours!
- After you finished, trim excess of any fabric or batting, squaring the quilt to proceed to bind it.

BINDING

Sew rights sides together.

- Cut enough strips $1\frac{1}{2}$ ' wide by the width of the fabric **A** to make a final strip $7\frac{1}{4}$ ' long. Start sewing the binding strip in the middle of one of the sides of the quilt, placing the strip right side down and leaving an approximated 5' tail. Sew with $\frac{1}{4}$ ' seam allowance (using straight stitch), aligning the strip's raw edge with the quilt top's raw edge.
- Stop stitching $\frac{1}{4}$ ' before the edge of the quilt (**DIAGRAM B 1**). Clip the threads. Remove the quilt from under the machine presser foot. Fold the strip in a motion of 45° and upward, pressing with your fingers (**DIAGRAM B 2**). Hold this fold with your finger, bring the strip down in line with the next edge, making a horizontal fold that aligns with the top edge of the quilt (**DIAGRAM B 3**). Start sewing at $\frac{1}{4}$ ' of the border, stitching all the layers. Do the same in the four corners of the quilt.
- Stop stitching before you reach the last 5 or 6 inches. Cut the threads and remove the quilt from under the machine presser foot. Lay the loose ends of the binding flat along the quilt edge, folding the ends back on themselves where they meet. Press them together to form a crease. Using this crease as the stitching line, sew the two open ends of the binding with right sides together (you can help yourself marking with a pencil if the crease is difficult to see).
- Trim seam to $\frac{1}{4}$ ' and press open. Complete the sewing. Turn binding to back of the quilt, turn raw edge inside and stitch by hand using blind stitch.



artgalleryfabrics.com

NOTE: While all possible care has been taken to ensure the accuracy of this pattern, We are not responsible for printing errors or the way in which individual work varies. Please read instructions carefully before starting the construction of this quilt. If desired, wash and iron your fabrics before starting to cut.

© 2017 Courtesy of Art Gallery Quilts LLC. All Rights Reserved.

