

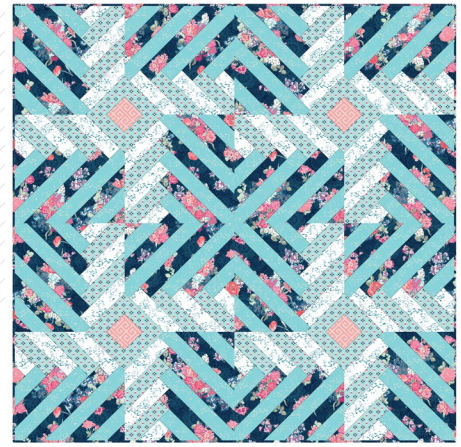




# VELANIO

SKOPELOS

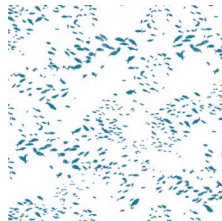
FABRICS DESIGNED BY KATARINA ROCCELLA



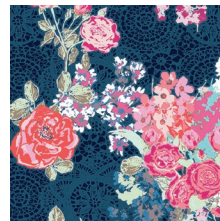
SEA



SK-34600  
PAPAROUNES CRIMSON



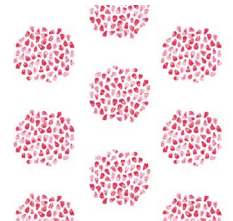
SK-34601  
FISH SCHOLEIO INTENSE



SK-34602  
NISI FLORA OCEANON



SK-34603  
GREEKA FOUXIA



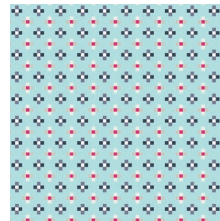
SK-34604  
MELOGRANO POME BERRY



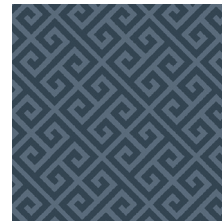
SK-34605  
NEO-PODS MEDITERRANEAN



SK-34606  
KLADI UNDER SHADOW



SK-34607  
CROSSES GALAZIO



SK-34608  
GREEKA SKOURO



SK-34609  
CHORA SHADES

LAND



SK-44600  
PAPAROUNES PASTEL



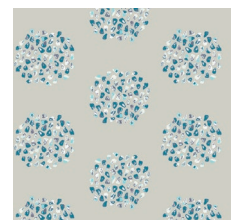
SK-44601  
FISH SCHOLEIO CALM



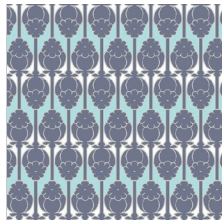
SK-44602  
NISI FLORA AERA



SK-44603  
GREEKA ROZ



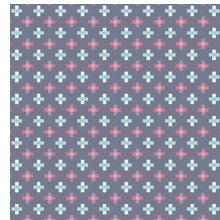
SK-44604  
MELOGRANO CLOUDBERRY



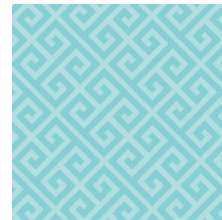
SK-44605  
NEO-PODS WATERFALL



SK-44606  
KLADI UNDER LIGHT



SK-44607  
CROSSES Mouro



SK-44608  
GREEKA BLE



SK-44609  
CHORA WINDS



# VELANIO

FINISHED SIZE | 72 ½" x 72 ½"

## FABRIC REQUIREMENTS

Fabric A	SK-34602	4 yd.
Fabric B	SK-44601	3 yd.
Fabric C	SK-34607	2 ¼ yd.
Fabric D	SK-34601	1 ½ yd.
Fabric E	SK-44603	¾ yd.

### BACKING FABRIC

Sk-44608 4 ½ yd. *(suggested)*

### BINDING FABRIC

SK-34602 (Fabric A) *(included)*

## CUTTING DIRECTIONS

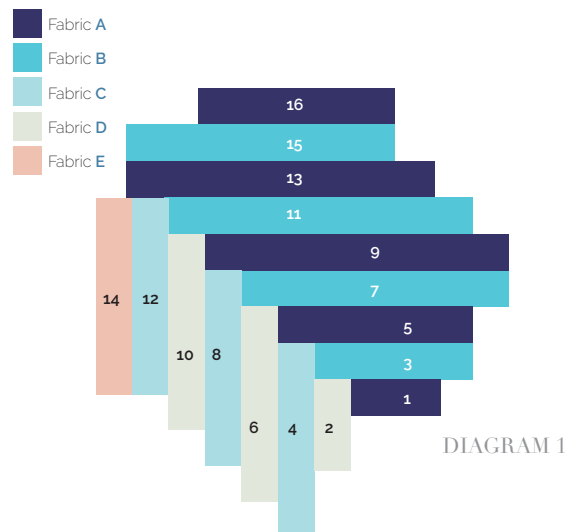
¼" seam allowances are included.

- Thirty-six (36) 3" x WOF strips from Fabric A sub-cut into thirty-two (32) 3" x 25", Thirty-two (32) 3" x 16" rectangles and Sixteen (16) 3" x 8".
- Thirty-two (32) 3" x WOF strips from Fabric B sub-cut into sixteen (16) 3" x 25" rectangles, thirty two (32) 3" x 22" and sixteen (16) 3" x 13" rectangles.
- Twenty-four (24) 3" x WOF strips from Fabric C sub-cut into forty-eight (48) 3" x 16" rectangles.
- Sixteen (16) 3" x WOF strips from Fabric D sub-cut into thirty-two (32) 3" x 16" rectangles and sixteen (16) 3" x 8" rectangles.
- Eight (8) 3" x WOF strips from Fabric E sub-cut into sixteen (16) 3" x 16" rectangles.

## CONSTRUCTION

*Sew all rights sides together with ¼" seam allowance.*

- Start by joining the strips in order from 1 - 16, as shown in the diagram below to obtain the composite units.
- Press seams either open or to one side, upon your preferences. Pressing the seams open eliminates bulk and makes it easier to match the seams.



- After assembling all units, its time to trim them.
- Rotate each block by 45° and line up the 45° marking on your ruler so that it's parallel with the seams of each unit.
- Trim the blocks to obtain a 18 ½" squared blocks. This measurement might vary a bit depending on the accuracy of your seam allowances.
- Try to be as precise as possible in order to obtain blocks that are all the same in size.

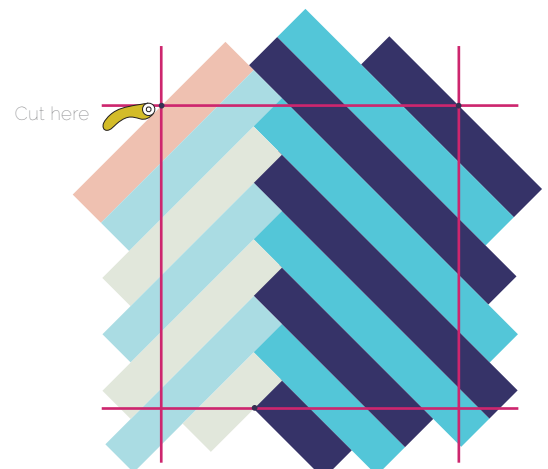


DIAGRAM 2





