

Sparkling Rhombi

Sara Lawson

QUILT DESIGNED BY SARA LAWSON



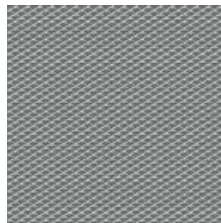
Fantasia

FABRICS DESIGNED BY SARA LAWSON

AMBROSIAL



FAN-3070
MAGICFLY'S NEST CHARM



FAN-3071
MINIATURE HILLS



FAN-3072
KROKOS SPRITES IRIS



FAN-3073
MONOKEROS STRIPE CANDY



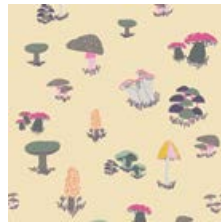
FAN-3074
BOUS TRAIL WARMET



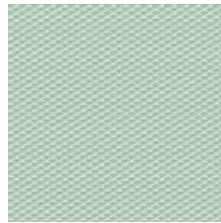
FAN-3075
EQUUS CREST SACHET



FAN-3076
LUCKY HOOFPRIINTS ARENA



FAN-3077
AGARICUS FOREST FROTH

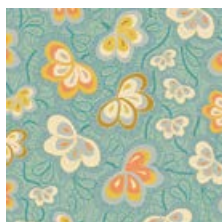


FAN-3078
MINIATURE HILLS DEW

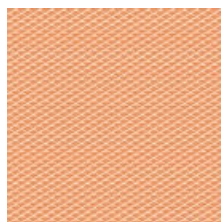


FAN-3080
UNICORN FABLE SAGEPLANT

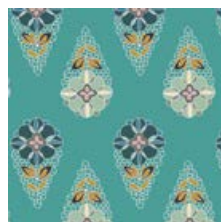
CREPUSCULAR



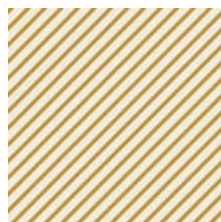
FAN-4070
MAGICFLY'S NEST SPARK



FAN-4071
MINIATURE HILLS TERRA



FAN-4072
KROKOS SPRITES TEAL



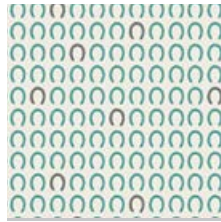
FAN-4073
MONOKEROS STRIPE OCRE



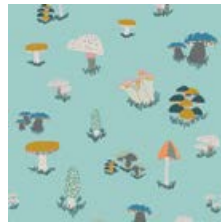
FAN-4074
BOUS TRAIL BLUET



FAN-4075
EQUUS CREST SHINE



FAN-4076
LUCKY HOOFPRIINTS LAGOON



FAN-4077
AGARICUS FOREST WATER



FAN-4079
MONOKEROS STRIPE GUM



FAN-4080
UNICORN FABLE BALSAMTREE



Sparkling Rhombi

FINISHED SIZE | 45" x 61"

FABRIC REQUIREMENTS

Fabric A	FAN-4070	5/8 yd.
Fabric B	FAN-4071	5/8 yd.
Fabric C	FAN-4075	5/8 yd.
Fabric D	FAN-4077	5/8 yd.
Fabric E	FAN-3070	5/8 yd.
Fabric F	FAN-3071	5/8 yd.
Fabric G	FAN-3074	5/8 yd.
Fabric H	FAN-3075	5/8 yd.
Fabric I	FAN-3076	5/8 yd.
Fabric J	FAN-3077	5/8 yd.
Fabric K	FAN-3080	1 1/2 yd.
Fabric L	FAN-3073	1 yd.
Fabric M	PE-433	1 1/2 yd.

BACKING FABRIC

FAN-3080- 4 yds. (suggested)

BINDING FABRIC

FAN-3073(Fabric **D**) (included)

CUTTING DIRECTIONS

1/4" seam allowances are included. Templates included.
WOF - Width of Fabric

- Cut three (3) small rhombi and three big rhombi from Fabric **A**
- Cut eleven (11) small rhombi from Fabric **B**
- Cut seven (7) small rhombi and 3 big rhombi from Fabric **C**
- Cut eleven (11) small rhombi and three big rhombi from Fabric **D**
- Cut seven (7) small rhombi and two big rhombi from Fabric **E**
- Cut ten (10) small rhombi from Fabric **F**
- Cut nine (9) small rhombi from Fabric **G**
- Cut seven (7) small rhombi and three big rhombi from Fabric **H**

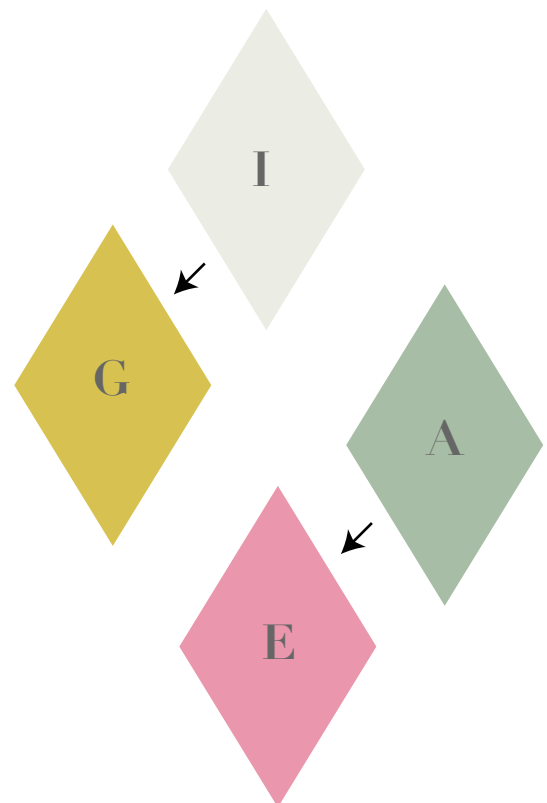
- Cut seven (7) small rhombi from Fabric **I**
- Cut nine (9) small rhombi and three big rhombi from Fabric **J**
- Cut six (6) small rhombi and three big rhombi from Fabric **K**
- Cut eleven (11) small rhombi from Fabric **L**
- Cut Twenty (20) 2" x WOF from Fabric **M** (sashing)

(A 60" ruler is needed for cutting the sashing)

QUILT CONSTRUCTION

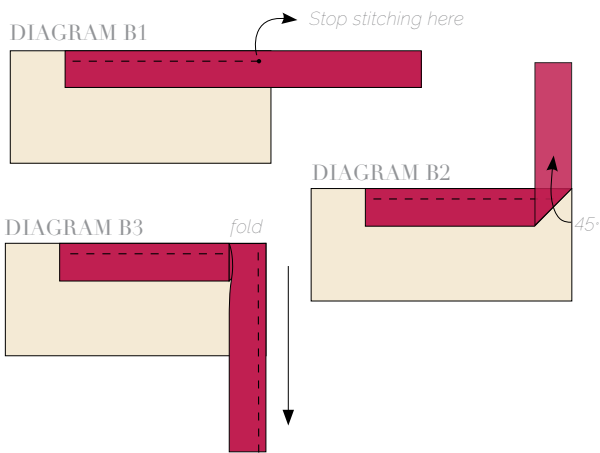
Sew all rights sides together with 1/4" seam allowance. Press open.

- To sew together your small rhombi take a rhombus from Fabric **G** and **I** and sew together following Diagram 1.
- Next sew a rhombus from Fabric **E** and **A** together.



- Now sew the two pieces you made in Diagram 1 together following Diagram 2.

- Stop stitching before you reach the last 5 or 6 inches. Cut the threads and remove the quilt from under the machine presser foot. Lay the loose ends of the binding flat along the quilt edge, folding the ends back on themselves where they meet. Press them together to form a crease. Using this crease as the stitching line, sew the two open ends of the binding with right sides together (you can help yourself marking with a pencil if the crease is difficult to see).
- Trim seam to $\frac{1}{4}$ " and press open. Complete the sewing. Turn binding to back of the quilt, turn raw edge inside and stitch by hand using blind stitch.



XX

Congratulations
& enjoy

XX



artgalleryfabrics.com

NOTE: While all possible care has been taken to ensure the accuracy of this pattern, We are not responsible for printing errors or the way in which individual work varies. Please read instructions carefully before starting the construction of this quilt. If desired, wash and iron your fabrics before starting to cut.

