

X  
X  
X  
X  
X  
X  
X  
X  
X  
X  
X  
X  
X  
X  
X  
X  
X  
X

# tangled



**ANGLES**

A DIVISION OF AGF

FREE PATTERN

XX



# tangled



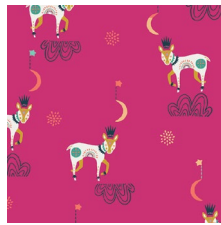
Lugu

FABRICS DESIGNED  
BY JESSICA SWIFT

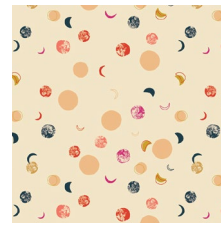
DAY BREAK



LGU-67100  
SOVA DAYGLOW



LGU-67102  
SLEEP TIGHT DAYDREAM



LGU-67103  
LUMINA DAWN



LGU-67104  
ODYSSEY AURORA



LGU-67105  
EFFLORESCENT VIVID



LGU-67101  
KONSTELACIJA MAAGIA



LGU-67106  
TEKSTIIL EMBERGLOW

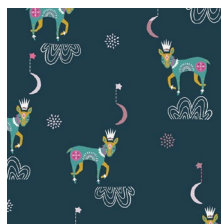


LGU-67107  
NAKTIS VIRIDIS

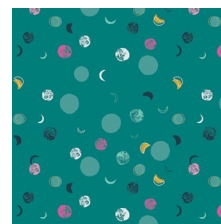
ULTRA VIOLET



LGU-57100  
SOVA NIGHTLIGHT



LGU-57102  
SLEEP TIGHT NIGHTFALL



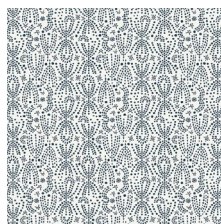
LGU-57103  
LUMINA DUSK



LGU-57104  
ODYSSEY DEWDROP



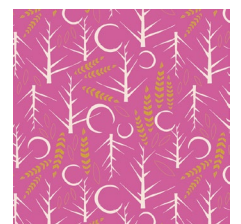
LGU-57105  
EFFLORESCENT OPULENT



LGU-57101  
KONSTELACIJA VALGE



LGU-57106  
TEKSTIIL SOLARFLAME



LGU-57107  
NAKTIS CIRSIUM





FINISHED SIZE | 10" x 10"

## FABRIC REQUIREMENTS

Fabric A	PE-439	Fat 8.
Fabric B	PE-463	Fat 8.
Fabric C	LGU-67100	Fat 8.
Fabric D	LGU-67106	Fat 8.
Fabric E	LGU-67101	Fat 8.
Fabric F	PE-449	Fat 8.
Fabric G	LGU-57103	Fat 8.
Fabric H	PE-452	Fat 8.
Fabric I	LGU-67102	Fat 8.
Fabric J	LGU-67107	Fat 8.
Fabric K	PE-464	Fat 8.
Fabric L	PE-454	Fat 8.

## CUTTING DIRECTIONS

*¼" seam allowances are included.  
WOF means width of fabric.*

One (1) 2½" square from fabrics **A B C D**.

One (1) 2½" x 1" strip from fabrics **A B E F**.

One (1) 3" x 1" strip from fabrics **A B E F**.

One (1) 3" x 1½" strip from fabrics **G H I J**.

One (1) 4" x 1½" strip from fabrics **G H I J**.

One (1) 4" x 2" strip from fabrics **B F K L**.

One (1) 5½" x 2" strip from fabrics **B F K L**.

## CONSTRUCTION

*Sew all rights sides together with ¼" seam allowance.*

- This block is made out of four log-cabin block.
- Start by taking the four 2½" squares from fabrics **A B C D**

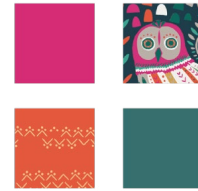


DIAGRAM 1

- Take the four 2½" x 1" strips from fabrics **A B E F**
- Attach them on the top and bottom edges of their corresponding square.

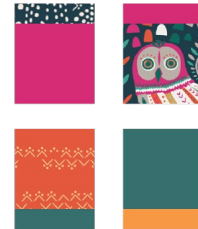


DIAGRAM 2

- Take the four 3" x 1" strips from fabrics **A B E F**
- Attach them on the right and left edges of their corresponding square.

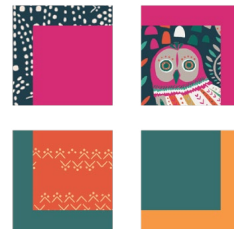


DIAGRAM 3

- Take the four 3" x 1½" strips from fabrics **G H I J**.
- Attach them on the top and bottom edges of their corresponding square.



DIAGRAM 3

- Take the four 4" x 1½" strips from fabrics **GHIJ**.
- Attach them on the right and left edges of their corresponding square.



DIAGRAM 4

- Take the four 4" x 2" strips from fabrics **BFKL**.
- Attach them on the top and bottom edges of their corresponding square.



DIAGRAM 5

- Take the four 5½" x 2" strips from fabrics **BFKL**.
- Attach them on the right and left edges of their corresponding square.



DIAGRAM 6

- Attach the four log cabin squares together.
- Voila!

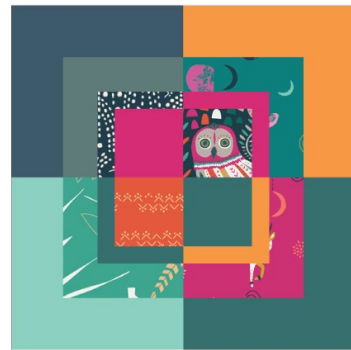


DIAGRAM 7



[artgalleryfabrics.com](http://artgalleryfabrics.com)

*NOTE: While all possible care has been taken to ensure the accuracy of this pattern, We are not responsible for printing errors or the way in which individual work varies. Please read instructions carefully before starting the construction of this quilt. If desired, wash and iron your fabrics before starting to cut.*