

Dearest






ANGLES

A DIVISION OF AGF

FREE PATTERN



Dearest

Lugu

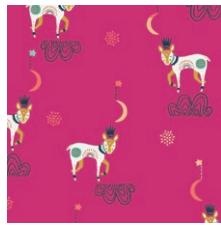
FABRICS DESIGNED
BY JESSICA SWIFT



DAY BREAK



LGU-67100
SOVA DAYGLOW



LGU-67102
SLEEP TIGHT DAYDREAM



LGU-67103
LUMINA DAWN



LGU-67104
ODYSSEY AURORA



LGU-67105
EFFLORESCENT VIVID



LGU-67101
KONSTELACIJA MAAGIA



LGU-67106
TEKSTIIL EMBERGLOW

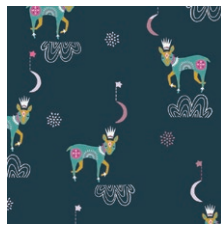


LGU-67107
NAKTIS VIRIDIS

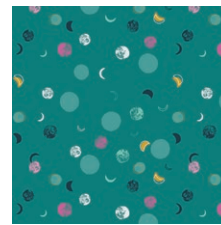
ULTRA VIOLET



LGU-57100
SOVA NIGHTLIGHT



LGU-57102
SLEEP TIGHT NIGHTFALL



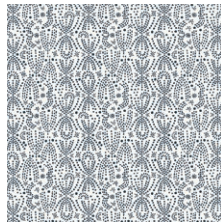
LGU-57103
LUMINA DUSK



LGU-57104
ODYSSEY DEWDROP



LGU-57105
EFFLORESCENT OPULENT



LGU-57101
KONSTELACIJA VALGE



LGU-57106
TEKSTIIL SOLARFLAME



LGU-57107
NAKTIS CIRSIUM





FINISHED SIZE | 54" x 72"

FABRIC REQUIREMENTS

Fabric A	DEN-OYD-6001	Fat ¼.
Fabric B	LGU-57103	Fat 8.
Fabric C	LGU-57106	Fat8.
Fabric D	PE-408	Fat8.
Fabric E	LGU-67100	Fat8.
Fabric F	LGU-67106	Fat8.
Fabric G	LGU-67103	Fat 8
Fabric H	LGU-67105	Fat 8.

CUTTING DIRECTIONS

*¼" seam allowances are included.
WOF means width of fabric.*

Two (2) pillow form pieces from fabric A.

One (1) crown from fabric B.

Two (2) fussy cut cheeks from fabric B.

One (1) rhombus from fabric B.

One (1) fussy cut small yellow moon for mouth from fabric B.

One (1) nose, ears piece from fabric C.

One (1) head from fabric D.

Eight (8) Fussy cut your choice of color for the eyelashes from fabric E.

Two (2) Fussy cut big moons for the eyes from fabric E.

Two (2) Fussy cut big owl back feathers for the ears from fabric E.

XX

One (1) rhombus a template from fabric F.

Two (2) fussy cut small circles from fabric G.

Four (4) fussy cut petals from fabric H.

One (1) collar from fabric H.

Fabric B cheeks and mouth pieces.



Fabric E eyelashes, eyes and ears pieces.



Fabric G small circles.



Fabric H petals.



CONSTRUCTION

Sew all rights sides together with 1/4" seam allowance.

- Take one (1) pillow form piece from fabric **A**, the crown piece from fabric **B** the head from fabric **D** and the collar piece from fabric **H**.
- Place the piece from fabrics **B**, **D** and **H** on top of the pillow form from fabric **A**.
- Refer to Diagram 1 for fabric placement and paste them on top using Steam-A-Seam.
- Stitch it 1/8" away from the edge or using your choice of decorative stich in order to secure the pieces for a long term of time.



DIAGRAM 1

- Take the nose, ears piece from fabric **C**.
- Place the piece on top of the head piece from fabric **D**.
- Paste it on top using Steam-A-Seam.
- Stitch it 1/8" away from the edge or using your choice of decorative stich in order to secure the pieces for a long term of time.



DIAGRAM 2

- Take the cheeks, ears piece from fabric **B**, Yellow moon for mouth piece from fabric **B**, the eight eyelashes from fabric **E**, moons for eyes from fabric **E** and the four petals from fabric **H**.
- Place all the pieces on top of the head piece.
- Paste it on top referring to the diagram below and using Steam-A-Seam.
- Stitch it 1/8" away from the edge or using your choice of decorative stich in order to secure the pieces for a long term of time.



DIAGRAM 3

- Take all the remaining pieces to finish the Dearest head, follow the diagram or cover picture for fabric placement.
- Continue using Steam-A-Seam and making the stitch to hold the pieces on place.



DIAGRAM 4

- Place the remaining pillow form from fabric **A** on top of the applique pillow form both facing right side of fabric.
- sew around it leaving one small opening to turn the head inside out.



DIAGRAM 5

XXXXXXXXXXXXXXXXXXXXXXXXXXXXXXXXXXXX

- Use pillow fill to form the dearest head and hand stitch the opening.
- Voila!



artgalleryfabrics.com

NOTE: While all possible care has been taken to ensure the accuracy of this pattern, We are not responsible for printing errors or the way in which individual work varies. Please read instructions carefully before starting the construction of this quilt. If desired, wash and iron your fabrics before starting to cut.

© 2019 Courtesy of Art Gallery Quilts LLC. All Rights Reserved.



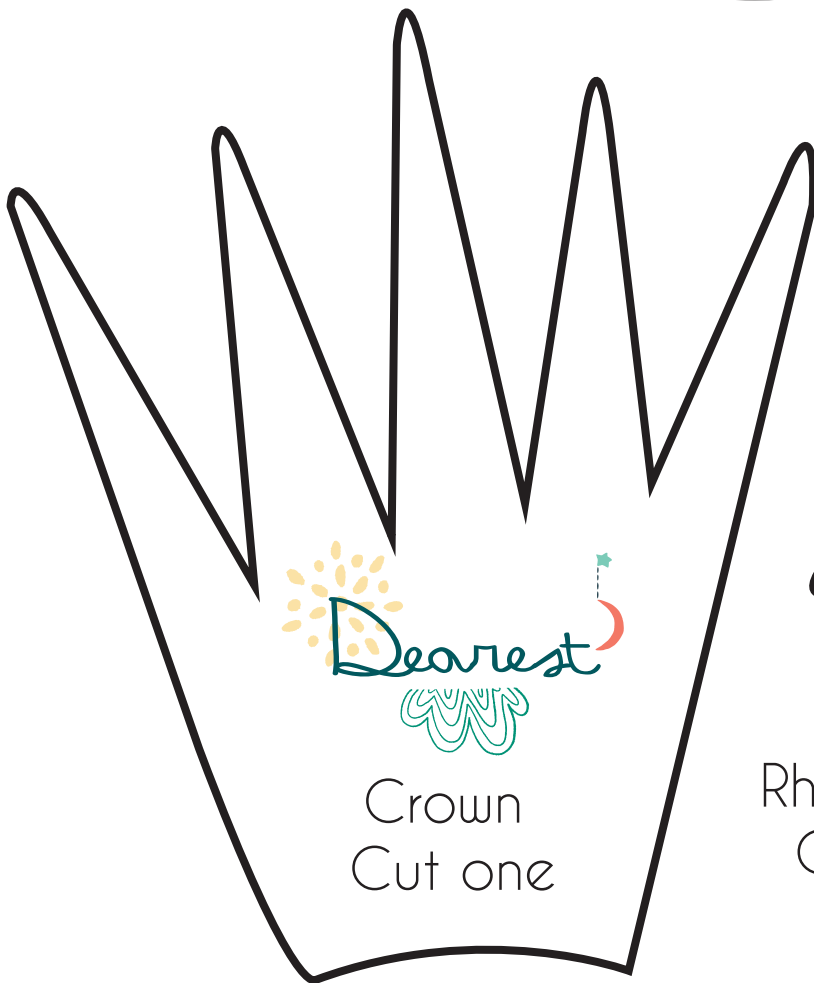
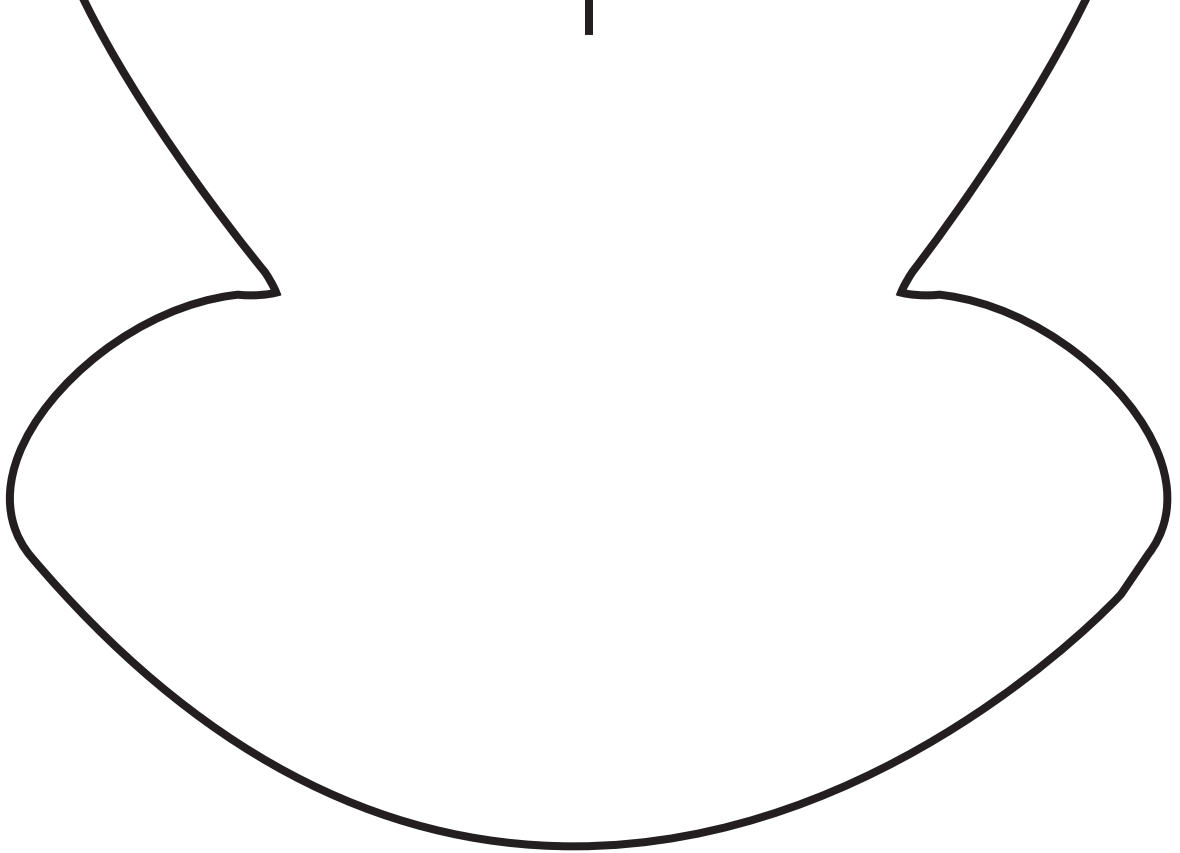
Pillow form
Cut two



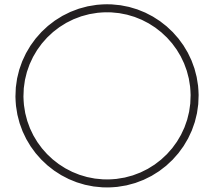
Nose, Ears
Cut one



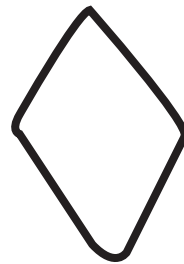
Collar
Cut one



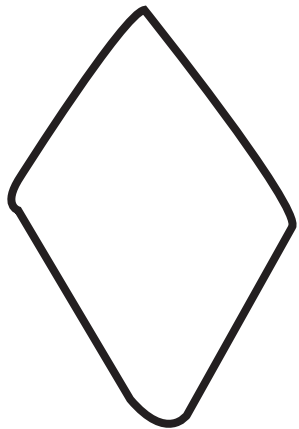
Crown
Cut one



Fussy cut Cheeks
Cut two



Rhombus b
Cut one



Rhombus a
Cut one



Head
Cut one