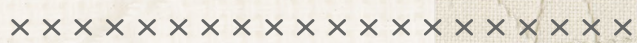




MEMORY LANE



MEMORY LANE 

QUILT DESIGNED BY AGFstudio



Little Clementine 

FABRICS DESIGNED BY AGF STUDIO



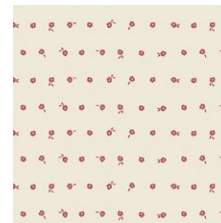
LCT-25507
PAPER CUT WARDROBE
CRIMSON



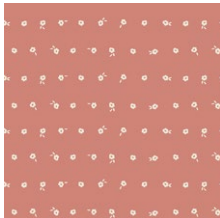
LCT-15509
MEETING PLACE
BRIGHTDAY



LCT-15508
COZINESS CARDIGAN
BLUE



LCT-15505
TEENY WEENY
CUSTARD



LCT-25505
TEENY WEENY
CINNAMON



LCT-15501
MISS DITZY'S
WINTERMINT



LCT-25501
MISS DITZY'S
PEACHCOBBLER



LCT-25503
MONTROSE BLOSSOMS
BRULEE



LCT-15502
THE GINGERBREADS
FONDANT



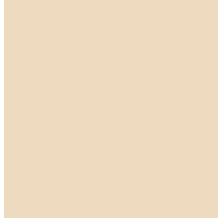
LCT-25504
MEMORY KEEPING
WARM



LCT-25506
WHISPERS INBLOOM
SWEETPLAIN



ADDITIONAL BLENDERS FOR THIS PROJECT



PE-436
CREME DE LA CREME



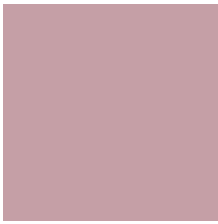
DEN-S-2006
ADOBE CLAY



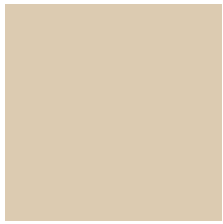
DEN-S-2004
INFUSED HYDRANGEA



DEN-L-4000
SOFT SAND



PE-425
MAUVELOUS



PE-432
SANDSTONE

FABRIC REQUIREMENTS

Fabric A	LCT-25507	¾ yd.
Fabric B	PE-436	½ yd.
Fabric C	DEN-S-2006	½ yd.
Fabric D	LCT-15509	½ yd.
Fabric E	DEN-S-2004	½ yd.
Fabric F	LCT-15508	½ yd.
Fabric G	LCT-15505	½ yd.
Fabric H	LCT-25505	½ yd.
Fabric I	DEN-L-4000	½ yd.
Fabric J	LCT-15501	½ yd.
Fabric K	LCT-25501	⅞ yd.
Fabric L	PE-425	½ yd.
Fabric M	LCT-25503	¼ yd.
Fabric N	LCT-15502	½ yd.
Fabric O	LCT-25504	½ yd.
Fabric P	LCT-25506	½ yd.
Fabric Q	PE-432	¼ yd.

BACKING FABRIC
LCT-15505 4 ½ yds. (Suggested)

BINDING FABRIC
LCT-15502 (Fabric **K**) (Included)

CUTTING INSTRUCTIONS

- Fourteen (14) 7⅞" squares from fabric **A**.
- Ten (10) 7⅞" squares from fabric **B**.
- Six (6) 7⅞" squares from fabric **C**.
- Fourteen (14) 7⅞" squares from fabric **D**.
- Six (6) 7⅞" squares from fabric **E**.
- Ten (10) 7⅞" squares from Fabric **F**.
- Eight (8) 7⅞" squares from Fabric **G**.
- Eight (8) 7⅞" squares from fabric **H**.

- XX
- Eight (8) 7⅞" squares from fabric **I**.
 - Seven (7) 7⅞" squares from fabric **J**.
 - Nine (9) 7⅞" squares from fabric **K**.
 - Nine (9) 7⅞" squares from fabric **L**.
 - Five (5) 7⅞" squares from fabric **M**.
 - Ten (10) 7⅞" squares from fabric **N**.
 - Ten (10) 7⅞" squares from fabric **O**.
 - Six (6) 7⅞" squares from fabric **P**.
 - Four (4) 7⅞" squares from fabric **Q**.

CONSTRUCTION

Sew all rights sides together with ¼" seam allowance.

HST construction

- Pair two 7⅞" fabric squares, right sides facing each other.
- Draw a line diagonally corner to corner using a mechanical pencil or frixion pen.
- Stitch ¼" from each side of the drawn lines.
- Cut the pieces apart along the marked diagonal line.
- Press and trim to a 7½" square.

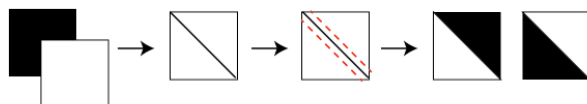


DIAGRAM 1

- Because fabric **A**, **D**, **H**, **N** and **O** are directional fabrics, make sure to follow the diagram below for the hst construction.
- Feel free to sew a fun project with the left over hst's.

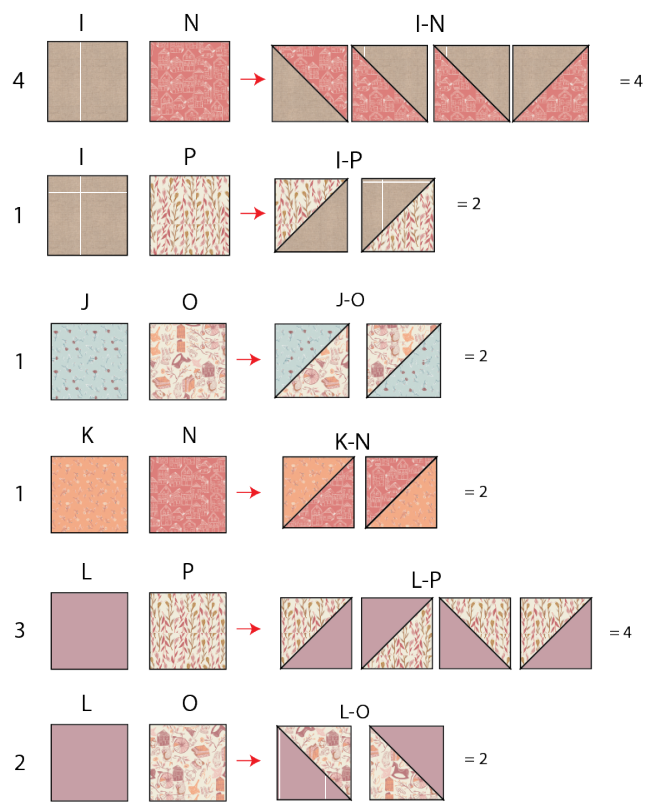
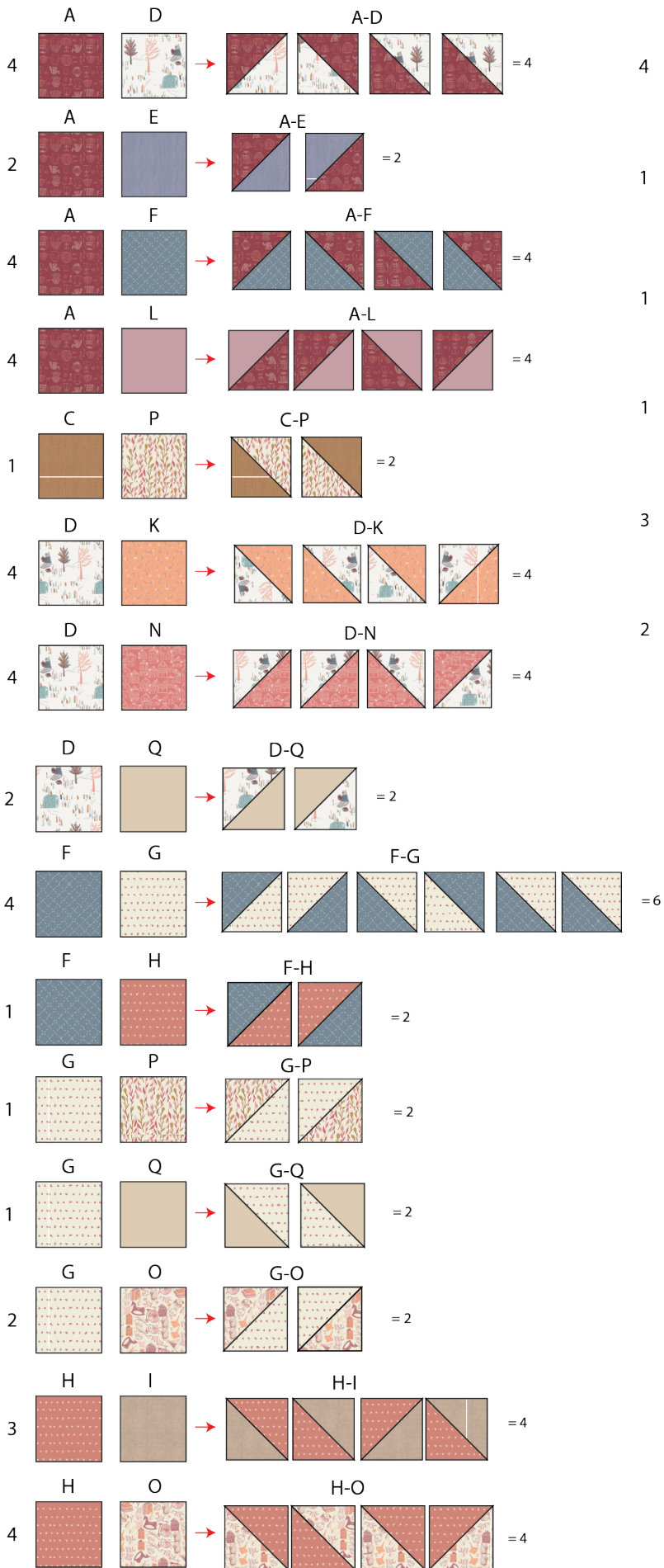
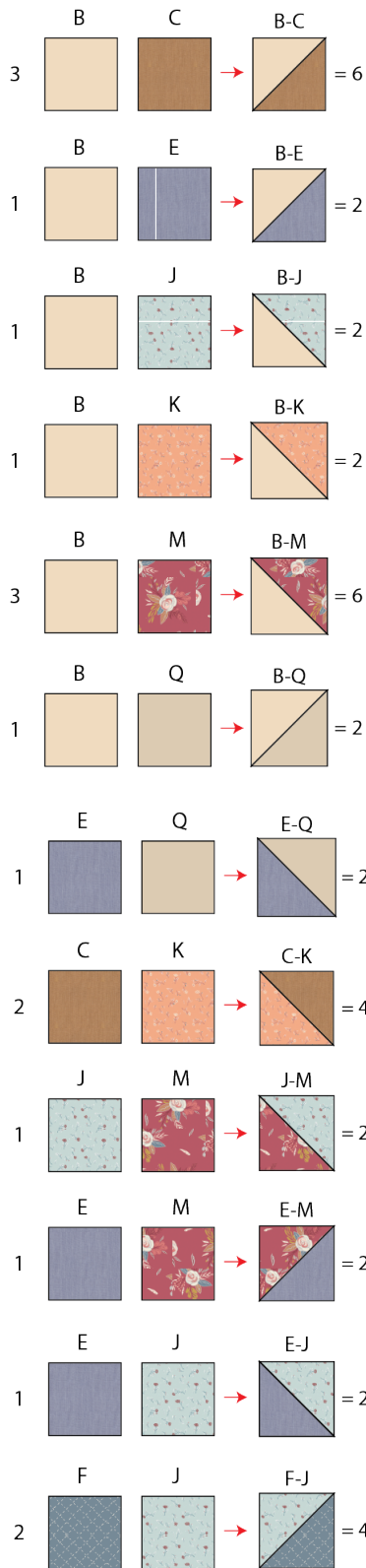


DIAGRAM 2

TOP ASSEMBLY

- Now, pair the following hst pieces that are not directional fabric.



- To assemble your quilt top, join your hst by rows in the following order:

Row 1: B-C, A-D, B-E, F-G, H-I, B-J, D-K, A-I, B-M, B-C.

Row 2: D-N, G-P, D-Q, F-H, A-E, I-N, C-K, L-O, J-M, D-N.

Row 3: F-J, K-N, J-O, B-C, L-P, F-G, E-Q, A-D, H-I, F-J.

Row 4: L-P, E-M, A-I, D-N, F-J, B-K, H-O, C-P, G-Q, L-P.

Row 5: A-F, B-Q, I-P, G-O, B-M, B-C, A-F, E-J, D-K, A-F.

Row 6: H-O, D-K, E-J, A-F, B-C, B-M, G-O, I-P, B-Q, H-O.

Row 7: B-M, G-Q, C-P, H-O, B-K, F-J, D-N, A-I, E-M, B-M.

Row 8: I-N, H-I, A-D, E-Q, F-G, L-P, B-C, J-O, K-N, I-N.

Row 9: F-G, J-M, L-O, C-K, I-N, A-E, F-H, D-Q, G-P, F-G.

Row 10: C-K, A-D, B-E, F-G, I-H, B-J, D-K, A-I, B-M, C-K.

DIAGRAM 3

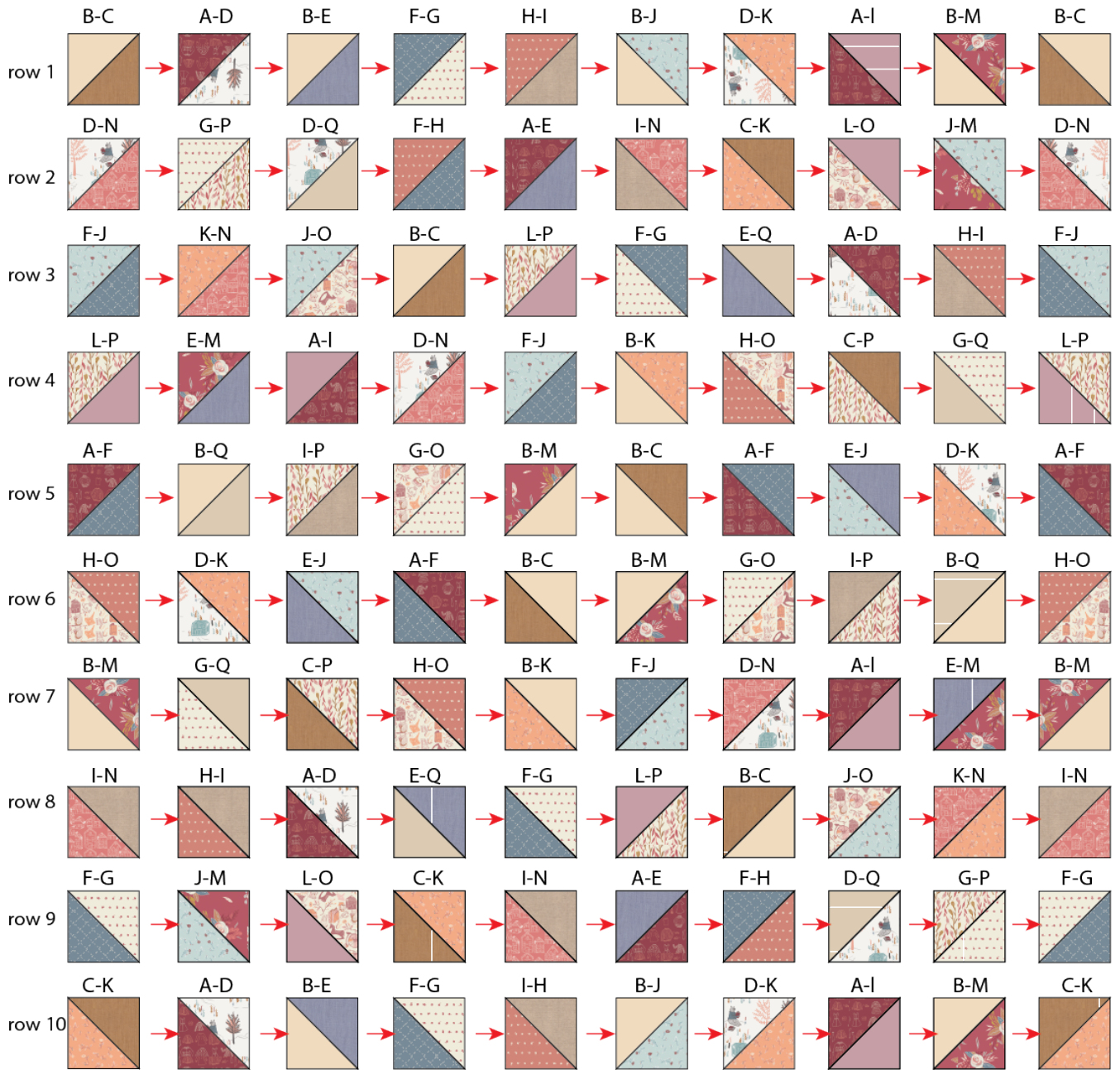


DIAGRAM 4

- Now, join rows 1-10.

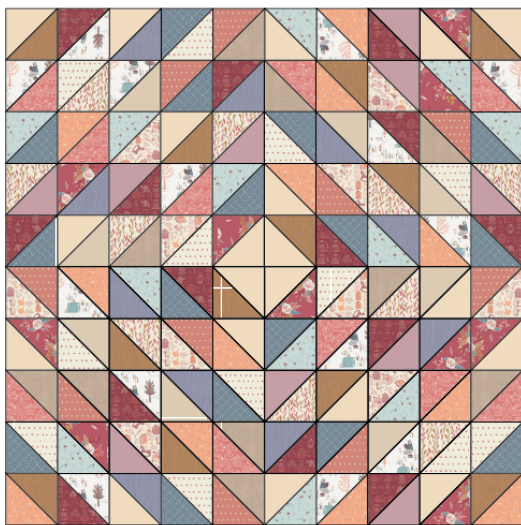
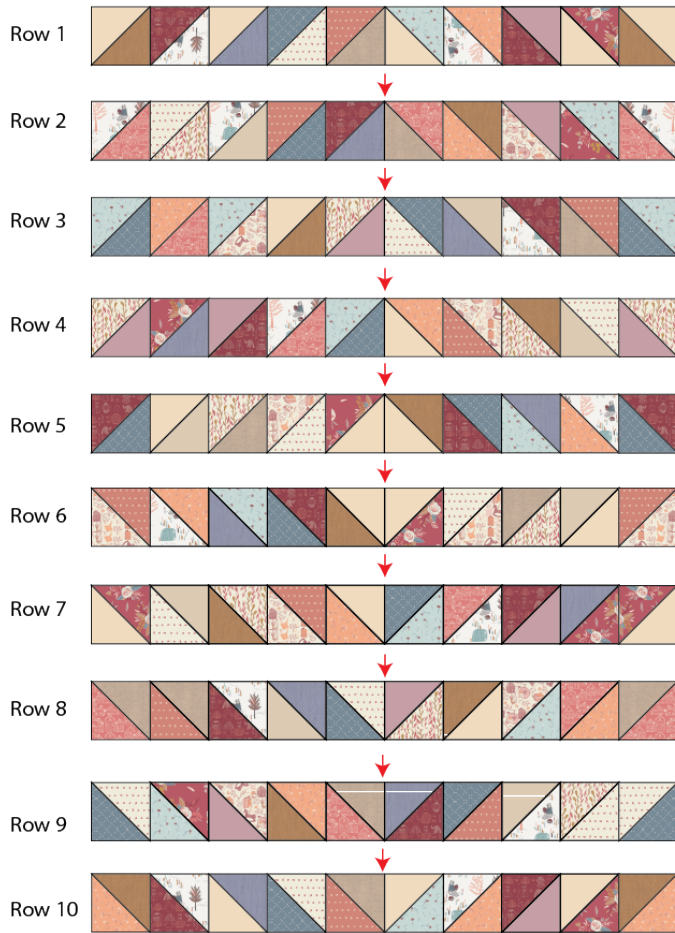


DIAGRAM 5

QUILT ASSEMBLY

Sew rights sides together

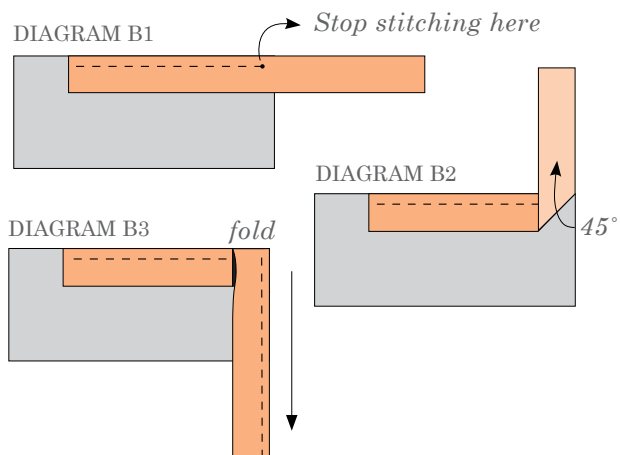
- Place BACKING FABRIC on a large surface wrong side up. Stretch it with masking tape against that surface.
- Place BATTING on top of backing fabric.
- Place TOP on top of the batting with right side facing up. Smooth away wrinkles using your hands.
- Pin all layers together and baste with basting thread, using long stitches. You can also use safety pins to join the layers.
- Machine or hand quilt starting at the center and working towards the corners. Remember that quilting motifs are a matter of personal preference. Have fun choosing yours!
- After you finished, trim excess of any fabric or batting, squaring the quilt to proceed to bind it.

BINDING

Sew rights sides together.

- Cut enough strips $1\frac{1}{2}$ " wide by the width of the fabric **K** to make a final strip 290" long. Start sewing the binding strip in the middle of one of the sides of the quilt, placing the strip right side down and leaving an approximated 5" tail. Sew with $\frac{1}{4}$ " seam allowance (using straight stitch), aligning the strip's raw edge with the quilt top's raw edge.
- Stop stitching $\frac{1}{4}$ " before the edge of the quilt (DIAGRAM B 1). Clip the threads. Remove the quilt from under the machine presser foot. Fold the strip in a motion of 45° and upward, pressing with your fingers (DIAGRAM B2). Hold this fold with your finger, bring the strip down in line with the next edge, making a horizontal fold that aligns with the top edge of the quilt (DIAGRAM B3). Start sewing at $\frac{1}{4}$ " of the border, stitching all the layers. Do the same in the four corners of the quilt.

- Stop stitching before you reach the last 5 or 6 inches. Cut the threads and remove the quilt from under the machine presser foot. Lay the loose ends of the binding flat along the quilt edge, folding the ends back on themselves where they meet. Press them together to form a crease. Using this crease as the stitching line, sew the two open ends of the binding with right sides together (you can help yourself marking with a pencil if the crease is difficult to see).
- Trim seam to $\frac{1}{4}$ " and press open. Complete the sewing. Turn binding to back of the quilt, turn raw edge inside and stitch by hand using blind stitch.



artgalleryfabrics.com

NOTE: While all possible care has been taken to ensure the accuracy of this pattern, We are not responsible for printing errors or the way in which individual work varies. Please read instructions carefully before starting the construction of this quilt. If desired, wash and iron your fabrics before starting to cut.

© 2020 Courtesy of Art Gallery Quilts LLC. All Rights Reserved.