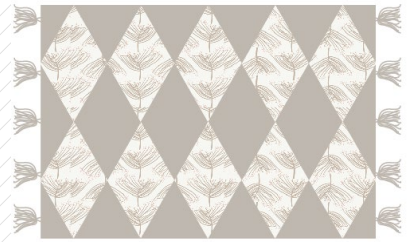






Marianne  
PILLOW

XXXXXXXXXXXXXXXXXXXXXXXXXXXXXXXX



DESIGNED BY AGFstudio

Ballerina FUSION

FABRICS DESIGNED BY AGF



FUS-BL-1804  
LACED BALLERINA



FUS-BL-1808  
EIDELWEISS BALLERINA



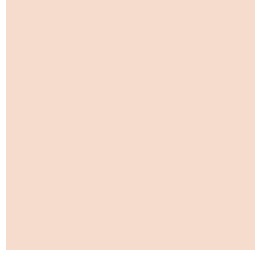
FUS-BL-1803  
WOODBLOCK BALLERINA



ADDITIONAL BLENDERS FOR THIS PROJECT



**PE-479**  
GENTLE FEATHER



**PE-471**  
SWEET MACADAMIA



**PE-472**  
CINNAMON

# Marianne

PILLOW

FINISHED SIZE | 18" x 12½"

## FABRIC REQUIREMENTS

### Pillow 1

Fabric **A** FUS-BL-1804 ¼ yd.

Fabric **B** PE-479 ¾ yd.

### Pillow 2

Fabric **A** FUS-BL-1808 ¼ yd.

Fabric **B** PE-471 ¾ yd.

### Pillow 3

Fabric **A** FUS-BL-1803 ¼ yd.

Fabric **B** PE-472 ¾ yd.

### BACKING FABRIC

Pillow 1- Fabric **B** -(Included)

Pillow 2- Fabric **B** -(Included)

Pillow 3- Fabric **B** -(Included)

## CUTTING DIRECTIONS

¼" seam allowances are included.  
WOF means width of fabric.

- Twenty (20) triangle templates from fabric **A**.
- Twenty four (24) triangle templates from fabric **B**.

## CONSTRUCTION

Sew all rights sides together with ¼" seam allowance.

- Take fabric **A** and **B** triangle template cut outs and join them in rows following in the diagram below.

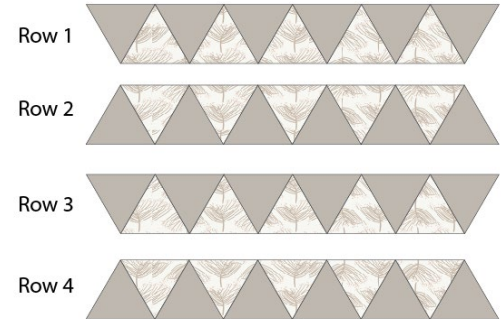


DIAGRAM 1

- Join rows 1-4 and trim the edges. The pillow should measure 18½" x 13".

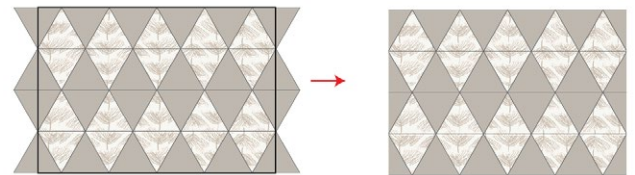


DIAGRAM 2

- Repeat the same instructions for pillows 2 and 3.

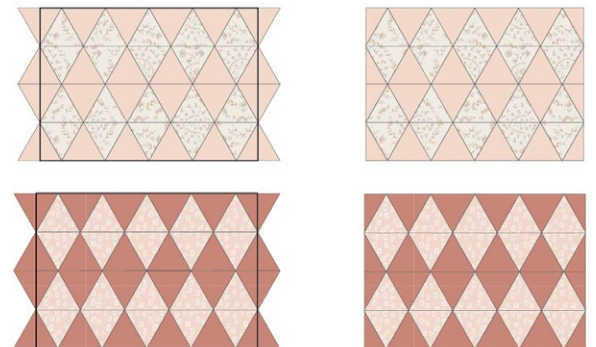


DIAGRAM 3





