



# LA VIE EN ROSE

QUILT DESIGNED BY AGFstudio



## Le Vintage Chic<sup>+</sup>

FABRICS DESIGNED BY AGF STUDIO



CAP-VC-5000  
NOSTALGIC ROMANCE



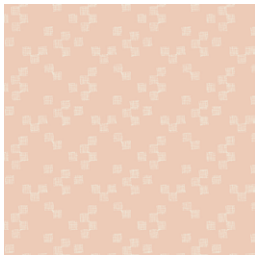
CAP-VC-5001  
PICTURESQUE BLOOM



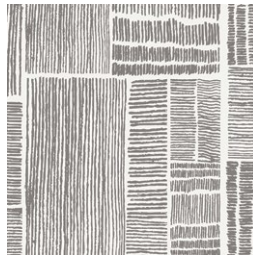
CAP-VC-5005  
RUSTIC DIAMONDS



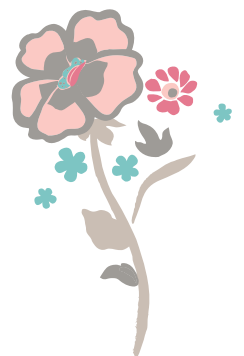
CAP-VC-5006  
AMOROUS MANUSCRIPT



CAP-VC-5007  
TENDER GRID



CAP-VC-5008  
LABYRINTH IMPRESSION







## Block B

- To create eight half square triangles (hst) with fabric **A** and **G**, take a 6" square from both fabrics.

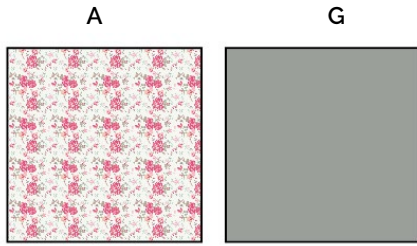


DIAGRAM 3

- Place right sides together. Draw two diagonal lines on the back of your squares to form an X.
- Sew on both sides of the diagonal lines at  $\frac{1}{4}$ " seam allowance.

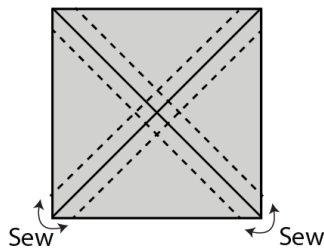


DIAGRAM 4

- Next cut squares vertically in half and horizontally in half. Then cut on both diagonal lines that you drew.

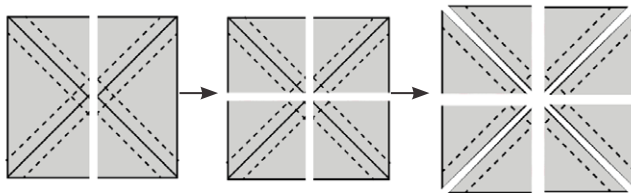


DIAGRAM 5

- You will now have 8 HST's. Repeat this process with your remaining 6" squares from fabric **A** and **G** to have a total of two-hundred and sixteen. Square all your HST's to  $2\frac{1}{2}$ ".

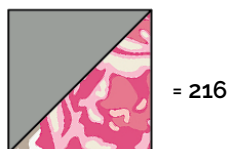


DIAGRAM 6

- Lay out twelve **A-G** hst pieces for Block B and one  $4\frac{1}{2}$ " square from fabric **A** and follow the block design to sew the block together.

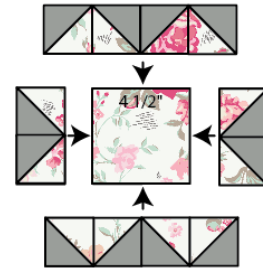


DIAGRAM 7

- Take the remaining  $4\frac{1}{2}$  squares from fabric **A** and all of the **A-G** hst pieces to make eighteen Block B's.

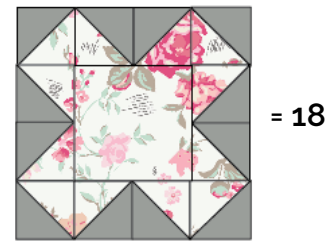


DIAGRAM 8

## Block C

- To create Block C, sew your  $2\frac{1}{2}$ " x WOF from fabric **H** and **I** together.
- Sub cut  $2\frac{1}{2}$ " strips, you should get sixteen strips per strip set.
- Repeat this process with your remaining  $2\frac{1}{2}$ " x WOF strips from fabric **H** and **I**. You will need a total of thirty six **H/I** sub strips.

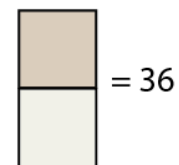


DIAGRAM 9





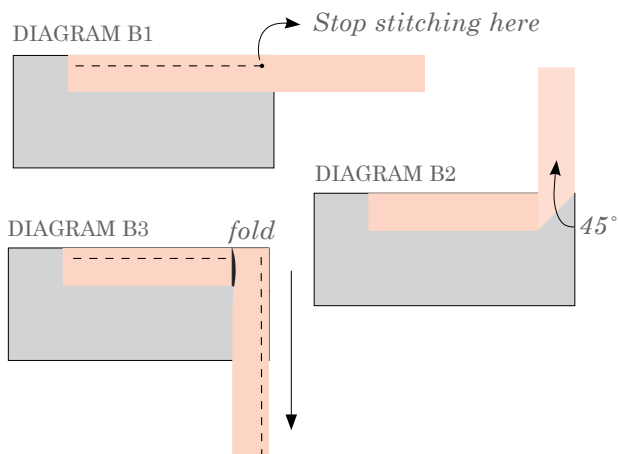








- Stop stitching before you reach the last 5 or 6 inches. Cut the threads and remove the quilt from under the machine presser foot. Lay the loose ends of the binding flat along the quilt edge, folding the ends back on themselves where they meet. Press them together to form a crease. Using this crease as the stitching line, sew the two open ends of the binding with right sides together (you can help yourself marking with a pencil if the crease is difficult to see).
- Trim seam to  $\frac{1}{4}$ " and press open. Complete the sewing. Turn binding to back of the quilt, turn raw edge inside and stitch by hand using blind stitch.



Congratulations  
& enjoy



[artgalleryfabrics.com](http://artgalleryfabrics.com)

NOTE: While all possible care has been taken to ensure the accuracy of this pattern, We are not responsible for printing errors or the way in which individual work varies. Please read instructions carefully before starting the construction of this quilt. If desired, wash and iron your fabrics before starting to cut.

© 2020 Courtesy of Art Gallery Quilts LLC. All Rights Reserved.