

Good Fortune



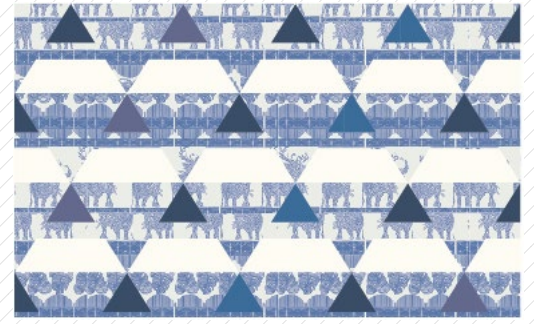
FREE PATTERN

xx



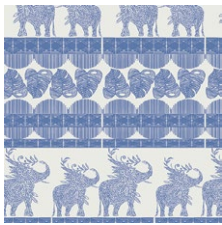
Good Fortune

DESIGNED BY *AGFstudio*



Indigo & Aster

FABRICS DESIGNED BY BARI J.



IDA-14804
GOOD FORTUNES ROYAL



IDA-24804
GOOD FORTUNES CERISE

ADDITIONAL BLENDERS FOR THIS PROJECT



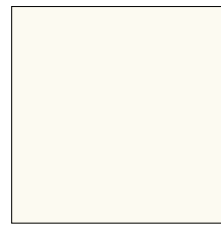
PE-467
NIGHT SEA



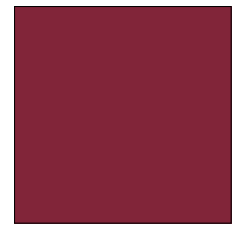
PE-441
BLUEBERRY ZEST



PE-415
PARISIAN BLUE



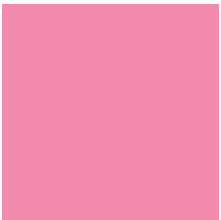
PE-408
WHITE LINEN



PE-427
SPICEBERRY



PE-405
CHERRY LIPGLOSS



PE-474
SWEET PINK



FINISHED SIZE | 22½" x 14"

FABRIC REQUIREMENTS

Pillow #1:

Fabric A	IDA-14804	1 ¼ yd.
Fabric B	PE467	¼ yd.
Fabric C	PE-441	⅛ yd.
Fabric D	PE-415	⅛ yd.
Fabric E	PE-408	¼ yd.

Pillow #2:

Fabric A	IDA-24804	1 ¼ yd.
Fabric B	PE427	¼ yd.
Fabric C	PE-405	⅛ yd.
Fabric D	PE-474	⅛ yd.
Fabric E	PE-408	¼ yd.

BACKING FABRIC

Pillow #1:	IDA-14804	<i>(Included)</i>
Pillow #2:	IDA-24804	<i>(Included)</i>

CUTTING DIRECTIONS

¼" seam allowances are included.
WOF means width of fabric.

- Three (3) 6" x WOF from fabric **A**.
- Four (4) 1¼" x WOF strip from fabric **A**.
- Two (2) 2½" x WOF strips from fabric **B**.
- One (1) 2½" x WOF strip from fabric **C**.
- One (1) 2½" x WOF strip from fabric **D**.
- Four (4) 2¼" x WOF strips from fabric **E**.

CONSTRUCTION

Sew all rights sides together with ¼" seam allowance.

- Start by taking one (1) 2½" x WOF strip from fabric **B**, two (2) 1¾" x WOF strip from fabric **A** and two (2) 2" x WOF strip from fabric **E** and join them following the diagram below.
- Repeat the same construction in other to have two (2) sets of **BAE**.

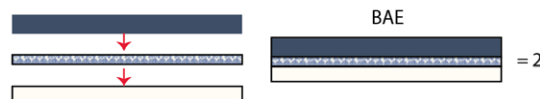


DIAGRAM 1

- Start by taking one (1) 2½" x WOF strip from fabric **C**, one (1) 1¾" x WOF strip from fabric **A** and one (1) 2" x WOF strip from fabric **E** and join them following the diagram below.
- Repeat the same construction in other to have two (2) sets of **CAE**.

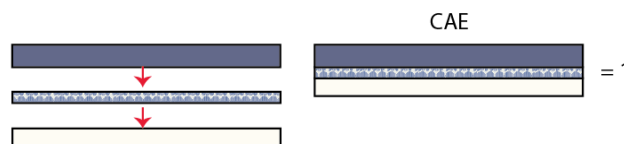


DIAGRAM 2

- Start by taking one (1) 2½" x WOF strip from fabric **D**, one (1) 1¾" x WOF strip from fabric **A** and one (1) 2" x WOF strip from fabric **E** and join them following the diagram below.
- Repeat the same construction in other to have two (2) sets of **DAE**.

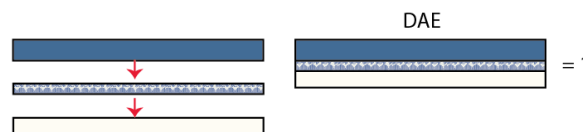
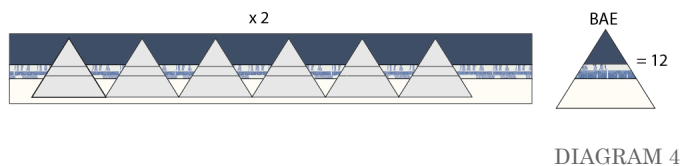
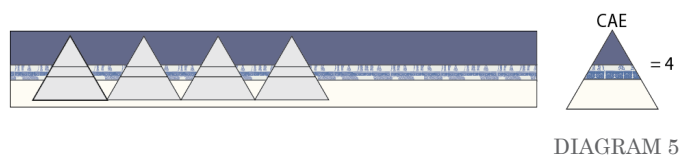


DIAGRAM 3

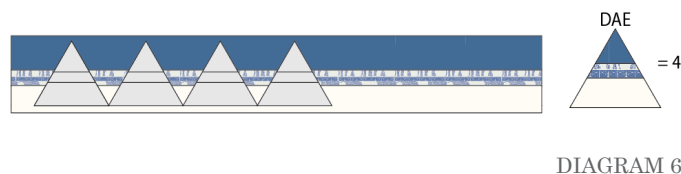
- Use the lines on the template as your guide to cut your triangles.
- Take two (2) strips of **BAE** and the triangle template and cut twelve (12) triangles.



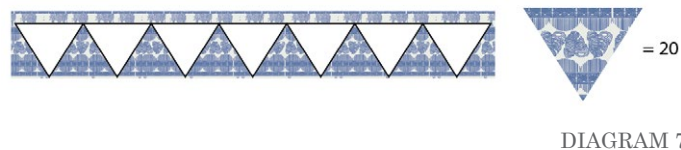
- Take one (1) strip of **CAE** and the triangle template and cut four (4) triangles.



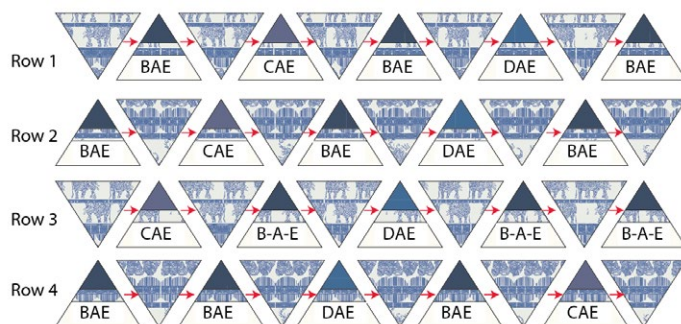
- Take one (1) strip of **DAE** and the triangle template and cut four (4) triangles.



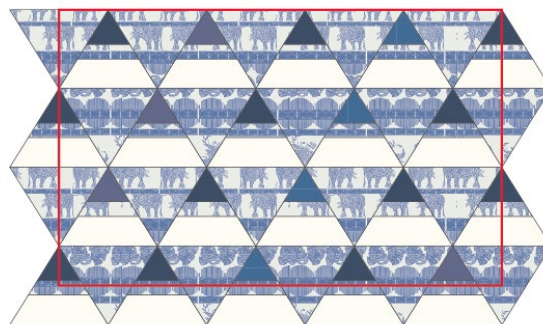
- Now, take two (2) 6" x WOF strip from fabric **A** and place the triangle template upside down and cut twenty (20) triangles.



- Now, follow diagram below for each triangle row placement.



- Trim to an 23" x 14½" rectangle.



CREATING THE BACK PILLOW

Sew all rights sides together with ¼" seam allowance. Press open.

- Take both 15" x 14½" rectangles from fabric **A**.
- Fold one bottom edge ½" towards the wrong side of the fabric of one of the rectangle.
- Fold the same edge ½" again and edge stitch the fold in place to have a clean edge.
- Repeat the same for the top edge of the bottom piece.
- Take the quilted pillow top and lay it flat right side up.
- Take one rectangle from fabric **A** and align it wrong side up to the right side of the pillow top.
- Take the other rectangle from fabric **A** and align it wrong side up to the left side of the pillow top.
- Pin the three pieces in place and sew around the edges at ¼".
- Clip the corners and flip the piece to the right side of the fabric.
- Fill the pillow with a 22½" x 14" pillow form and enjoy!

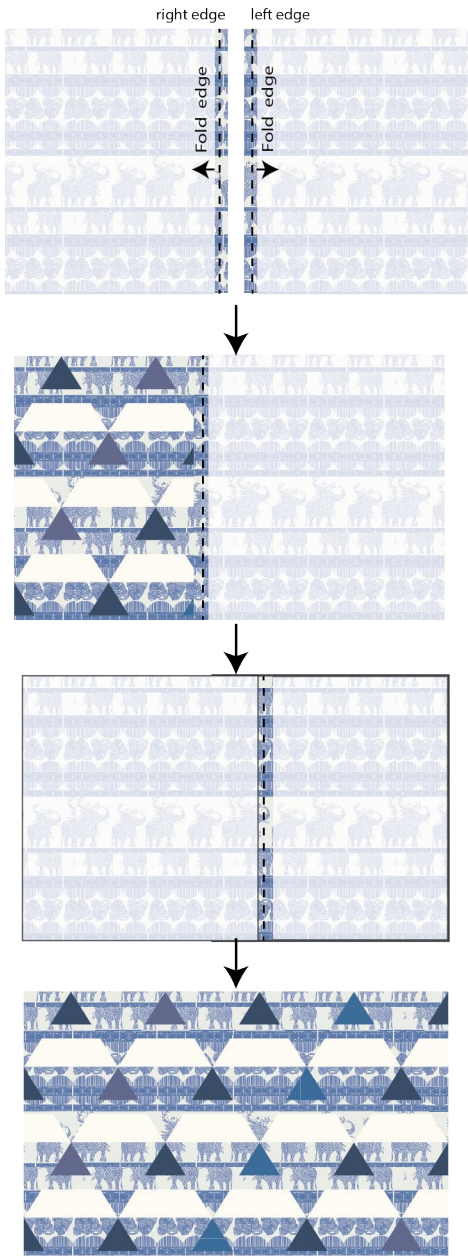


DIAGRAM 10





XXXXXXXXXXXXXXXXXXXXXXXXXXXXXXXX

Congratulations
& enjoy

XXXXXXXXXXXXXXXXXXXXXXXXXXXXXXXX



artgalleryfabrics.com

NOTE: While all possible care has been taken to ensure the accuracy of this pattern, We are not responsible for printing errors or the way in which individual work varies.

Please read instructions carefully before starting the construction of this quilt. If desired, wash and iron your fabrics before starting to cut.

