

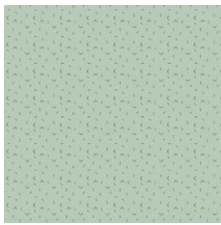
FlowerThoughts

DESIGNED BY *AGFstudio*



«Matchmade»

FABRICS DESIGNED BY PAT BRAVO



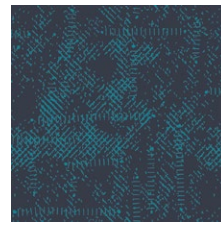
MTM-9300
INDICATION FOLIAGE



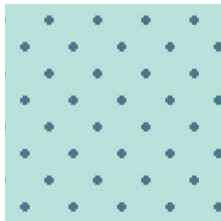
MTM-9100
INDICATION BERRY



MTM-9201
THOUGHTS GOLD



MTM-9404
EXPRESSIONS MIDNIGHT



MTM-9403
POSITIVITY MIDNIGHT



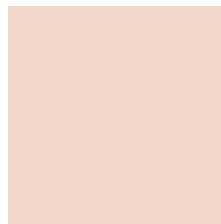
ADDITIONAL BLENDERS FOR THIS PROJECT



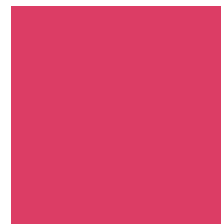
PE-414
DARK CITRON



PE-418
TILE BLUE



PE-471
SWEET MACADAMIA



PE-405
CHERRY LIPGLOSS



PE-421
HONEY



PE-436
CREME DE LA CREME



PE-442
OCEAN WAVES

FINISHED SIZE | 3½' x 3½'

FABRIC REQUIREMENTS

Pin Cushion 1		
Fabric A	PE-414	F8
Fabric B	MTM-9300	F8
Fabric C	PE-418	F8
Pin Cushion 2		
Fabric A	PE-471	F8
Fabric B	MTM-9100	F8
Fabric C	PE-405	F8
Pin Cushion 3		
Fabric A	PE-421	F8
Fabric B	MTM-9201	F8
Fabric C	PE-436	F8
Pin Cushion 4		
Fabric A	PE-442	F8
Fabric B	MTM-9404	F8
Fabric C	MTM-9403	F8

BACKING FABRIC
 PE-414 F8 (*suggested*)
 PE-471 F8 (*suggested*)
 PE-442 F8 (*suggested*)

Additional Materials

Steam-a-seam- Double side fusible tape
 Jute cord (2½" approx. length for each)

CUTTING DIRECTIONS

¼" seam allowances are included.
 WOF means width of fabric.

- Two (2) 4" x 4" square from fabric **A**.
- Four (4) template 1 from fabric **B**.
- One (1) template 2 from fabric **C**.

CONSTRUCTION

Sew all rights sides together with ¼" seam allowance.

- Take (1) 4" x 4" square from fabric **A** and place your (4) Template 1 and (1) Template 2 units as in the Diagram below.
- Make sure they are centered before ironing each piece on the main fabric.

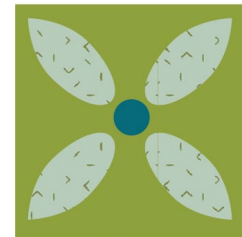


DIAGRAM 1

- After ironing each piece, quilt as desired.
- Take another 4" x 4" square from fabric **A** and place it on top of your main piece, right sides together.
- Take one jute cord and place it on desired corner, in between the top and the bottom piece.
- For better result, you can sew by hand.

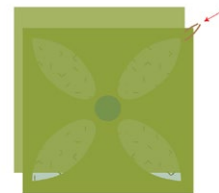


DIAGRAM 2

- Pin all four side and sew all around, leaving about 2" of opening.
- Flip the unit inside out and stuff the pin cushion.
- Handstitch or machine stitch to assure a clean finish.
- Repeat the same process for all pin cushions and enjoy!

*Congratulations
& enjoy*

XXXXXXXXXXXXXXXXXXXXXXXXXXXXXXXX



artgalleryfabrics.com

NOTE: While all possible care has been taken to ensure the accuracy of this pattern, We are not responsible for printing errors or the way in which individual work varies.

Please read instructions carefully before starting the construction of this quilt. If desired, wash and iron your fabrics before starting to cut.

