

# Flower Dance





# Flower Dance



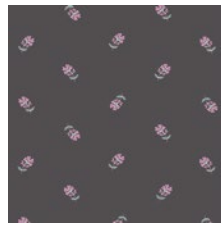
# Flower Child

FABRICS DESIGNED BY MAUREEN CRACKNELL

WILD HEART



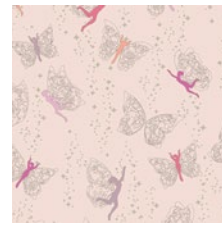
**FCD-67150**  
FLOWERY CHANT WILD



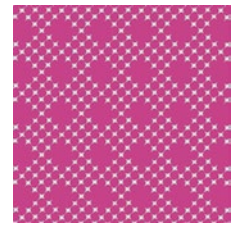
**FCD-67151**  
SPRINKLED PETALS MOON



**FCD-67152**  
LUSH CANOPY CLOUD



**FCD-67153**  
PRAIRIE FAIRIES DAY



**FCD-67154**  
PIXIE DUST GLOW



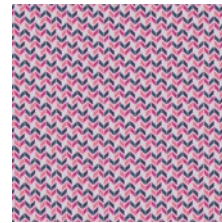
**FCD-67155**  
FLICKER & FADE BLUE



**FCD-67156**  
BLOOMING GROUND LUSCIOUS



**FCD-67157**  
COSMIC SISTER IMPRINT



**FCD-67158**  
BRAIDED PATH SUBLIME

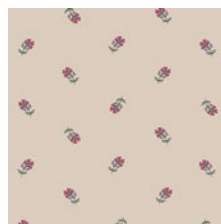


**FCD-67159**  
ENCHANTED MEADOW

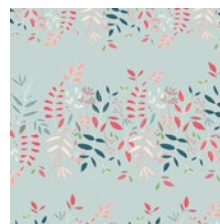
GENTLE HEART



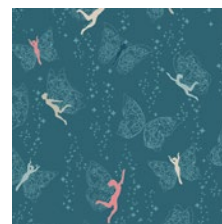
**FCD-77150**  
FLOWERY CHANT GENTLE



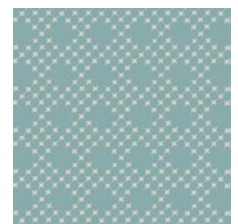
**FCD-77151**  
SPRINKLED PETALS SUN



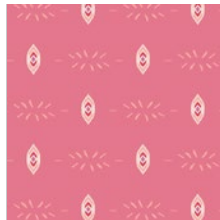
**FCD-77152**  
LUSH CANOPY SKY



**FCD-77153**  
PRAIRIE FAIRIES NIGHT



**FCD-77154**  
PIXIE DUST SPARK



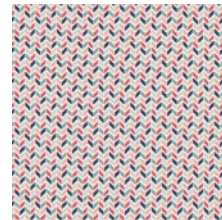
**FCD-77155**  
FLICKER & FADE BLUSH



**FCD-77156**  
BLOOMING GROUND LUSTROUS



**FCD-77157**  
COSMIC SISTER IMPRESS



**FCD-77158**  
BRAIDED PATH SUBTLE



**FCD-77160**  
SISTERHOOD



# Flower Dance

FINISHED SIZE | 80" x 80"

## FABRIC REQUIREMENTS

Fabric <b>A</b>	FCD-67155	1 ¼ yds
Fabric <b>B</b>	FCD-77158	1 ¼ yds
Fabric <b>C</b>	FCD-77156	1 ¼ yds
Fabric <b>D</b>	FCD-67156	¾ yd
Fabric <b>E</b>	FCD-67154	1 ¼ yd
Fabric <b>F</b>	FCD-67150	1 ¼ yd
Fabric <b>G</b>	FCD-77152	¾ yd
Fabric <b>H</b>	FCD-67152	¾ yd
Fabric <b>I</b>	PE-471	1 yd
Fabric <b>J</b>	FCD-77160	½ yd
Fabric <b>K</b>	FCD-67153	½ yd
Fabric <b>L</b>	DEN-S-2001	3 ½ yd

### BACKING FABRIC

FCD-77156 5 yds. (Suggested)

### BINDING FABRIC

PE-417 (included)

*Denim is known to rub off on skin or other surfaces, the term for this is CROCKING, and it happens naturally with all indigo dyes. There might be some bleeding on the first few washes, so make sure to pre-wash them separately with cold water and a mild soap.*

## CUTTING DIRECTIONS

¼" seam allowances are included.  
WOF means width of fabric.

Five (5) 5 ½" x WOF strips from Fabrics **A, B, E, F**

Four (4) 5 ½" x WOF strips from Fabric **C**

Two (2) 5 ½" x WOF strips from Fabrics **D, G, H, I**

Five (5) 5 ½" x 20" strips from Fabrics **A, B, C, E, F**

Three (3) 5 ½" x 20" strips from Fabrics **D, H, I**

Two (2) 5 ½" x 20" strips from Fabric **G**

Eight (8) Petal Template from Fabric **J**

Six (6) 6 ½" x 6 ½" square from Fabric **K**

XX

Six (6) 6 ⅞" x 6 ⅞" square from Fabrics **K, L**

Fourteen (14) 6 ½" x 6 ½" square from Fabric **L**

Four (4) 28 ½" x 24 ½" rectangles from Fabric **L**

Two (2) 40 ½" x 32 ½" rectangles from Fabric **L**

## CONSTRUCTION

*Sew all rights sides together with ¼" seam allowance.*

- Start by taking Fabric **K** 6 ⅞" x 6 ⅞" square and draw a diagonal line from one corner to the opposite corner on the reverse side of the lightest square.
- Pair the marked square with Fabric **L** 6 ⅞" x 6 ⅞" square of the same size, edges matched and right sides together.
- Sew two seams, each ¼" from the marked center line.
- Press and steam
- Repeat the same process until you complete 12 HSTs

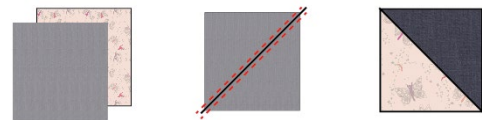


DIAGRAM 1

- Now, take seven (7) of your 6 ½ squares from Fabric **L**, take six (6) of your **K-L** HSTs and three (3) of your 6 ½ squares from Fabric **K** and pair them as diagram below

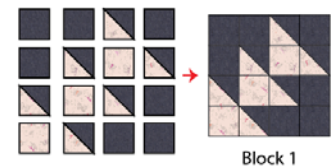


DIAGRAM 2

- Repeat the same process in order to create Block 2 but facing the arrows up as diagram below
- Set aside both pieces

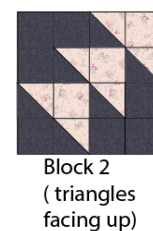


DIAGRAM 3

- Now, pair two 28 1/2" x 24 1/2" rectangles from Fabric **L**
- Repeat the same process for the other two 28 1/2" x 24 1/2" rectangles



DIAGRAM 4

- Now, take one rectangle **L** and one Block 1 and pair them together as diagram below.
- Repeat the same process for the other rectangle **L** and Block 2
- Set aside

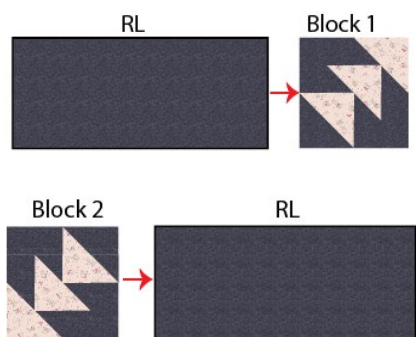


DIAGRAM 5

- Now, pair two 40 1/2" x 32 1/2" rectangles. This will be your middle piece from the top quilt

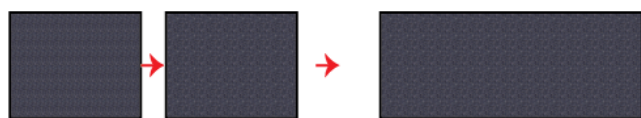


DIAGRAM 6

- Pair Block 1 strip with your middle piece, then, on the bottom, pair Block 2 strip as diagram below.
- Set aside

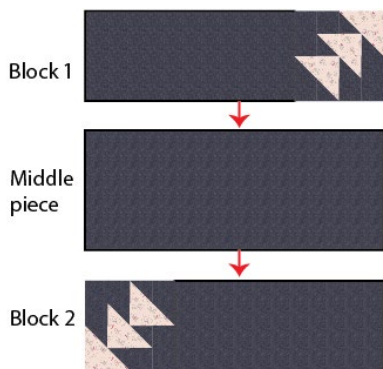


DIAGRAM 7

## Joining the strips

- Start by taking four (4) 5 1/2" x WOF strips from Fabric **A** and for each strip, join one (1) 5 1/2" x 20 from Fabric **A**. Each piece will measure about 61 1/2" long.
- Take four (4) 5 1/2" x WOF strips from Fabric **B** and for each strip, join one (1) 5 1/2" x 20 from Fabric **B**.
- Take four (4) 5 1/2" x WOF strips from Fabric **C** and for each strip, join one (1) 5 1/2" x 20 from Fabric **C**.
- Take two (2) 5 1/2" x WOF strips from Fabric **D** and for each strip, join one (1) 5 1/2" x 20 from Fabric **D**.
- Take four (4) 5 1/2" x WOF strips from Fabric **E** and for each strip, join one (1) 5 1/2" x 20 from Fabric **E**.
- Take four (4) 5 1/2" x WOF strips from Fabric **F** and for each strip, join one (1) 5 1/2" x 20 from Fabric **F**.
- Take two (2) 5 1/2" x WOF strips from Fabric **G** and for each strip, join one (1) 5 1/2" x 20 from Fabric **G**.
- Take two (2) 5 1/2" x WOF strips from Fabric **H** and for each strip, join one (1) 5 1/2" x 20 from Fabric **H**.
- Take two (2) 5 1/2" x WOF strips from Fabric **I** and for each strip, join one (1) 5 1/2" x 20 from Fabric **I**.
- Now, take one (1) 5 1/2" x 20" strip from Fabric **D** and pair it with a 5 1/2" x 20" strip from Fabric **I** as diagram below

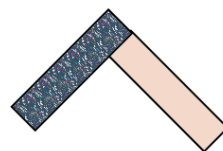


DIAGRAM 8

- Now, take one (1) 5 1/2" x 20" strip from Fabric **H** and pair it with on the top right of Fabric **I** strip as diagram below

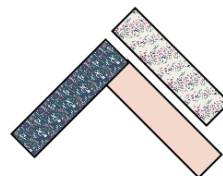


DIAGRAM 9

- Now, take one (1) 5 1/2" x 20" strip from Fabric **C** and pair it with on the top left of Fabric **D** strip as diagram below

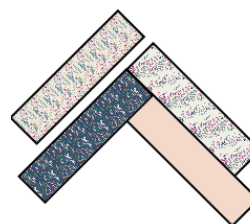


DIAGRAM 10





- Now, place BACKING FABRIC on a large surface wrong side up. Stretch it with masking tape against that surface.
- Place BATTING on top of backing fabric.
- Place your strip piece on top and then your Denim piece on top.
- Pin all layers together and baste with basting thread, using long stitches. You can also use safety pins to join the layers.
- Take your Petal Template and you can trace it as diagram below or as similar as possible.
- Place your Fabric J petals on desired place or as diagram below, pin or hand baste.
- You can use zig zag stitch in order to hold your applique petals.



DIAGRAM 9

### Reverse Applique Reveal

- Take your small pair of applique scissors and start cutting out the insides of the petals, leaving about  $\frac{1}{8}$ " of fabric seam allowance.
- Be careful not to catch the fabrics underneath while trimming away the top layer.
- After you finish, trim excess fabric or batting, squaring the quilt to proceed to bind it.

XX

*Please bear in mind that you will have excess fabric from the strip assembly after you trim your quilt. You can use that excess fabric by making pillows, or any other project.*

## QUILT ASSEMBLY

*Sew rights sides together.*

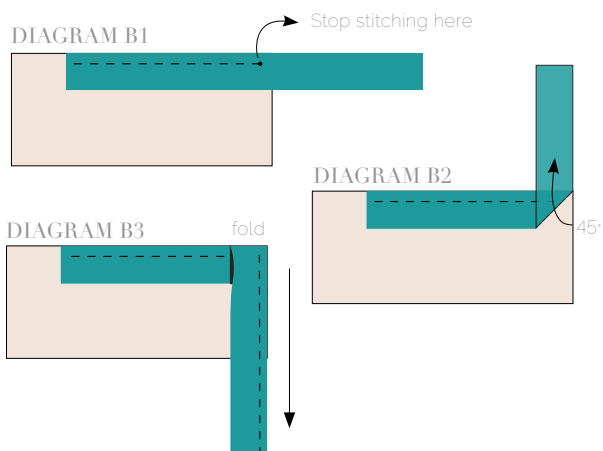
- Place BACKING FABRIC on a large surface wrong side up. Stretch it with masking tape against that surface.
- Place BATTING on top of backing fabric.
- Place TOP on top of the batting with right side facing up. Smooth away wrinkles using your hands.
- Pin all layers together and baste with basting thread, using long stitches. You can also use safety pins to join the layers.
- Machine or hand quilt starting at the center and working towards the corners. Remember that quilting motifs are a matter of personal preference. Have fun choosing yours!
- After you finished, trim excess of any fabric or batting, squaring the quilt to proceed to bind it.

## BINDING

*Sew rights sides together.*

- Cut enough strips  $1\frac{1}{2}$ ' wide by the width of the binding fabric to make a final strip 330' long. Start sewing the binding strip in the middle of one of the sides of the quilt, placing the strip right side down and leaving an approximated 5' tail. Sew with  $\frac{1}{4}$ " seam allowance (using straight stitch), aligning the strip's raw edge with the quilt top's raw edge.
- Stop stitching  $\frac{1}{4}$ " before the edge of the quilt (DIAGRAM B 1). Clip the threads. Remove the quilt from under the machine presser foot. Fold the strip in a motion of  $45^\circ$  and upward, pressing with your fingers (DIAGRAM B2). Hold this fold with your finger, bring the strip down in line with the next edge, making a horizontal fold that aligns with the top edge of the quilt (DIAGRAM B3). Start sewing at  $\frac{1}{4}$ " of the border, stitching all the layers. Do the same in the four corners of the quilt.

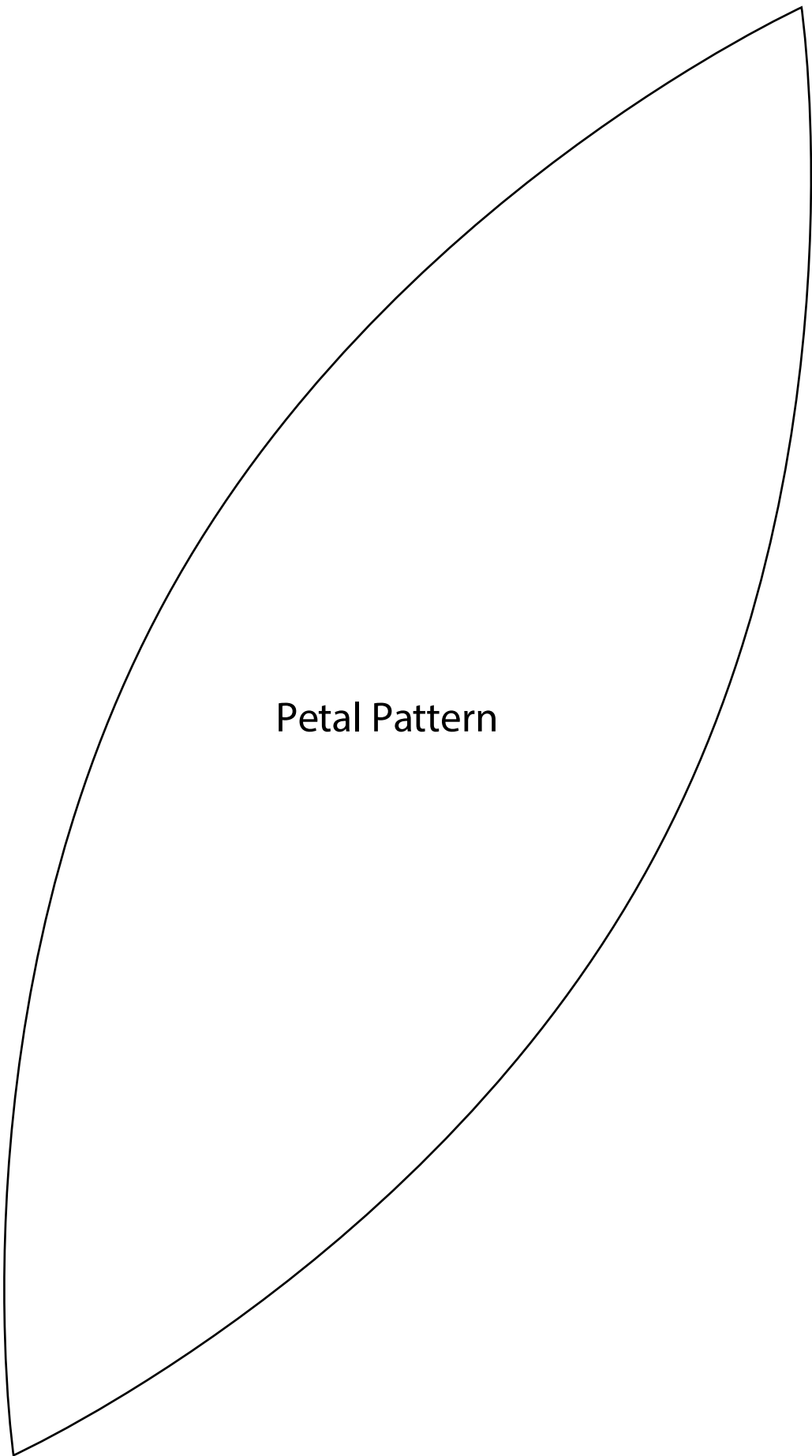
- Stop stitching before you reach the last 5 or 6 inches. Cut the threads and remove the quilt from under the machine presser foot. Lay the loose ends of the binding flat along the quilt edge, folding the ends back on themselves where they meet. Press them together to form a crease. Using this crease as the stitching line, sew the two open ends of the binding with right sides together (you can help yourself marking with a pencil if the crease is difficult to see).
- Trim seam to  $\frac{1}{4}$ " and press open. Complete the sewing. Turn binding to back of the quilt, turn raw edge inside and stitch by hand using blind stitch.



[artgalleryfabrics.com](http://artgalleryfabrics.com)

**NOTE:** While all possible care has been taken to ensure the accuracy of this pattern, We are not responsible for printing errors or the way in which individual work varies.

Please read instructions carefully before starting the construction of this quilt. If desired, wash and iron your fabrics before starting to cut.



Petal Pattern