

falling

QUILT DESIGNED BY Sharon Holland

Sketchbook

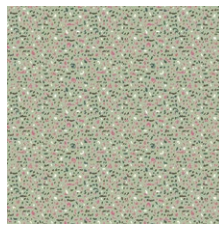
FABRICS DESIGNED BY SHARON HOLLAND



SBK-37200
INK OUTBURST FRESCO



SBK-37201
AIR BRUSH FLIGHT



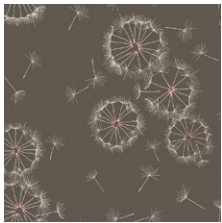
SBK-37206
SPECKLED JADE



SBK-37208
WOODBLOCK FLAXEN



SBK-47208
WOODBLOCK BERRY



SBK-37202
TINY DANCER FALL



SBK-37205
DELINEAMENT SEPIA

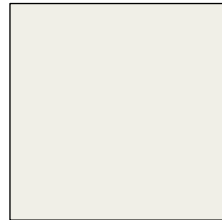


SBK-47203
DOODLIE MEANDER

ADDITIONAL BLENDERS FOR THIS PROJECT



PE-414
DARK CITRON



PE-408
WHITE LINEN



falling

FINISHED SIZE | 66 ½" x 75 ½"

FABRIC REQUIREMENTS

Fabric A	SBK-37200	¾ yd.
Fabric B	SBK-37201	¾ yd.
Fabric C	SBK-37206	½ yd.
Fabric D	SBK-37208	½ yd.
Fabric E	SBK-47208	½ yd.
Fabric F	SBK-37202	¾ yd.
Fabric G	SBK-37205	1 ⅙ yd.
Fabric H	SBK-47203	1 yd.
Fabric I	PE-414	⅝ yd.
Fabric J	PE-408	1 ¼ yd.

BACKING FABRIC

SBK-37209 4½ yds. (suggested)

BINDING FABRIC

SBK-47203 (Fabric **H**) (included)

CUTTING DIRECTIONS

¼" seam allowances are included.
WOF means width of fabric.

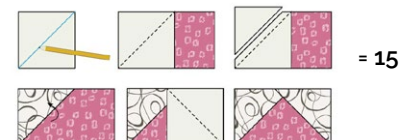
- Fifteen (15) 12½" x 3½" strips from fabric **A**.
- Three (3) 6½" x 3½" rectangles from fabric **A**.
- Fifteen (15) 12½" x 3½" strips from fabric **B**.
- Three (3) 6½" x 3½" rectangles from fabric **B**.
- Fifteen (15) 6½" x 3½" rectangles from fabric **C**.
- Seventeen (17) 6½" x 3½" rectangles from fabric **D**.
- Fifteen (15) 6½" x 3½" rectangles from fabric **E**.
- Six (6) 12½" x 3½" strips from fabric **F**.
- Thirty (30) 6½" x 3½" rectangles from fabric **F**.

- One hundred twenty four (124) 3½" squares from fabric **G**.
- Twelve (12) 12½" x 3½" strips from fabric **H**.
- Twelve (12) 6½" x 3½" rectangles from fabric **H**.
- Fifteen (15) 6½" x 3½" rectangles from fabric **I**.
- Fifteen (15) 12½" x 3½" strips from fabric **J**.
- Thirty nine (39) 6½" x 3½" rectangles from fabric **J**.

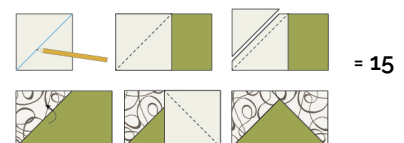
CONSTRUCTION

- Mark a diagonal line on the wrong side of a 3½" square from fabric **G**.
- Take one 6½" x 3½" rectangle from fabric **G** and place a 3½" square from fabric **G** right sides facing together on the left side of a 6½" x 3½" rectangle from fabric **E**.
- Stitch on the drawn line. Trim seam allowance to ¼". Press corner open.
- In the same manner, sew a 3½" square from fabric **G** to the remaining corner, trim and press.
- Make a total of 15 flying geese units using fabrics **G** and **E**.
- Repeat the same process for the 6½" x 3½" rectangles from fabric **I** to make a total of 15 flying geese units using fabrics **G** and **I**, 15 flying geese units using fabrics **G** and **C**, and 17 flying geese units using fabrics **G** and **D**.

G-E



G-I



Block B

- Take one **F-G-D** and **J-G-C** strip and join them following the diagram below.
- Take the remaining eight **F-G-D** and **J-G-C** strips to create a total of nine blocks.



DIAGRAM 15

- Take one $12\frac{1}{2}$ " x $3\frac{1}{2}$ " rectangle from fabrics **A** and **H** and join them at the bottom of the assembled unit, following the diagram below.
- Repeat the same process taking eight $12\frac{1}{2}$ " x $3\frac{1}{2}$ " rectangles from fabrics **A** and **H** in order to create a total of 9 block B.



DIAGRAM 16

- Take one $6\frac{1}{2}$ " x $3\frac{1}{2}$ " rectangle from fabrics **B**, **F**, **J** and **H** and join them following the diagram below.
- Repeat the same process taking two $6\frac{1}{2}$ " x $3\frac{1}{2}$ " rectangles from fabrics **B**, **F**, **J** and **H** in order to create three columns.

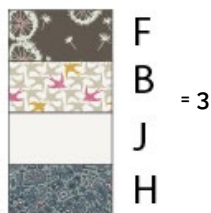


DIAGRAM 17

- Take three Block B and the assembled columns and join them following the diagram below.
- These will be Block B.1.

Block B.1



DIAGRAM 18

Block C

- Take one **H-G-D** and **J-G-C** strip and join them following the diagram below.



DIAGRAM 19

- Take one $12\frac{1}{2}$ " x $3\frac{1}{2}$ " rectangle from fabrics **A** and **F** and join them at the bottom of the assembled unit, following the diagram below.
- Repeat the same process in order to create a total of 6 block C.

Block C

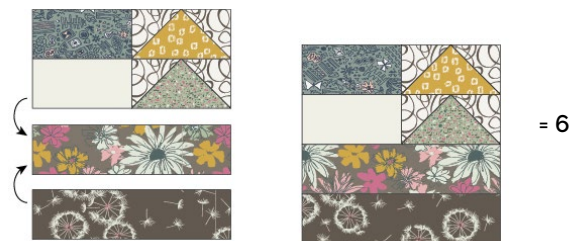


DIAGRAM 20

