

Crystalline

QUILT DESIGNED BY AGFstudio

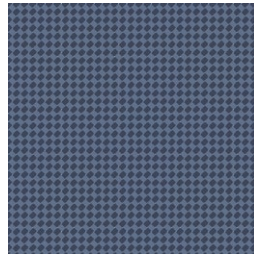


SNOW DAY

FABRICS DESIGNED BY MISTER DOMESTIC



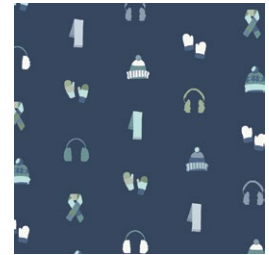
SND-65400
BUILDING A SNOWMAN



SND-65401
CUDDLED UP



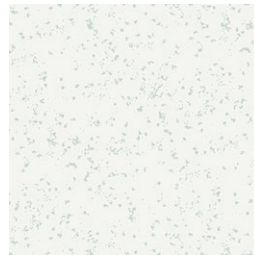
SND-65402
WINTER FROST



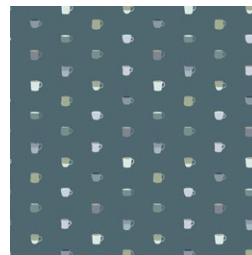
SND-65403
BUNDLED UP DIM



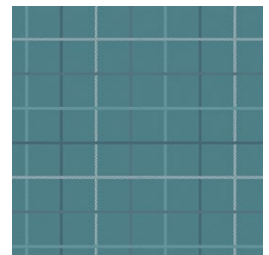
SND-65404
ICE CRYSTALS



SND-65406
LET IT SNOW



SND-65407
DRINK IT UP



SND-65409
WINTRY CHECK SOFT



SND-65410
SNOWBOUND



- Make twenty four HST's from each of the following fabrics combinations.



DIAGRAM 2

- Now, bring the 7 1/8" squares from fabrics **I, J** & **E**.
- Repeat the HST method to construct twelve HST's from each of the following combinations.
- Set aside.

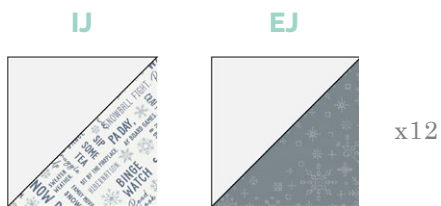


DIAGRAM 3

BLOCK #1 CONSTRUCTION

- Bring one 2" square from fabric **D** & **F** and one 3 1/2" x 2" rectangle from fabric **F**.
- Attach the **D** square on top of the **F** square.
- Attach the **F** rectangle to the right side of rectangle **DF**.
- Press.

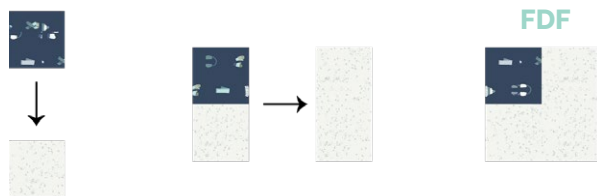


DIAGRAM 3

- Bring one from each of the following HST's combinations **FH, FG** & **GH**.
- Attach the **FDF** square made in Diagram 3 to the **FG** HST's as shown in Diagram 4.
- Then, attach the **FH** and **GH** HST's together as shown in the Diagram 4.

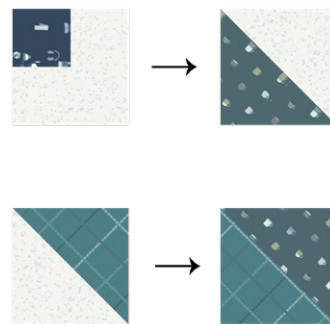


DIAGRAM 4

- Attach the rows together as shown in the diagram below.
- Press and set aside.
- Make a total of twelve.

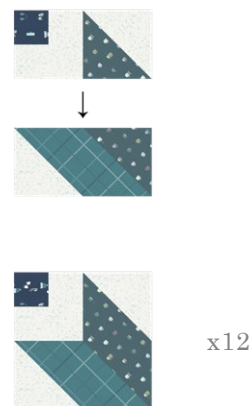


DIAGRAM 5

- Then, make a total of twelve blocks mirroring the previously made block from Diagram 3-5 as shown in the diagram below.

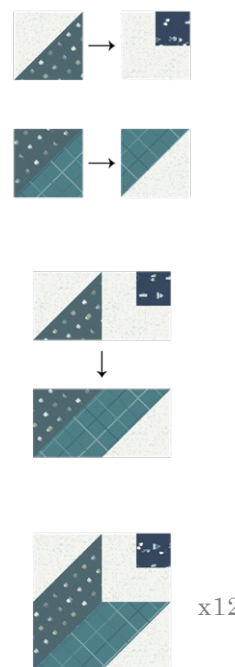
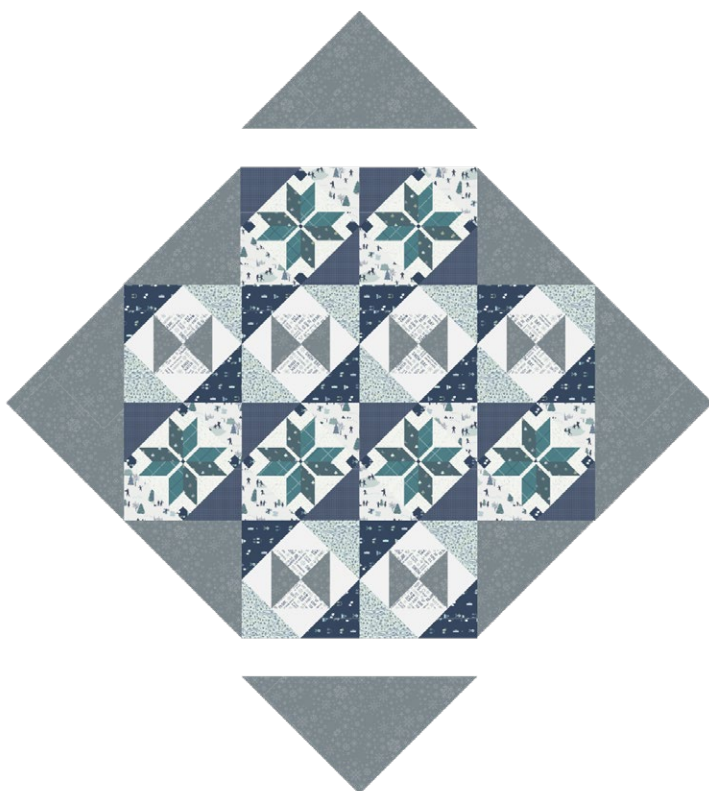


DIAGRAM 6

- Bring the two 25 7/8" squares from fabric E.
- Use your rotary cutter to cut diagonally across the squares and end up with four half square triangles.
- Attach two E half square triangles to the left and right sides of the quilt top.



- Then attach the other two E half square triangles to the top and bottom sides of the quilt top.
- Press.
- Voila!



QUILT ASSEMBLY

Sew rights sides together.

- Place BACKING FABRIC on a large surface wrong side up. Stretch it with masking tape against that surface.
- Place BATTING on top of backing fabric.
- Place TOP on top of the batting with right side facing up. Smooth away wrinkles using your hands.
- Pin all layers together and baste with basting thread, using long stitches. You can also use safety pins to join the layers.
- Machine or hand quilt starting at the center and working towards the corners. Remember that quilting motifs are a matter of personal preference. Have fun choosing yours!
- After you finished, trim excess of any fabric or batting, squaring the quilt to proceed to bind it.

BINDING

Sew rights sides together.

- Cut enough strips 1 1/2" wide by the width of the fabric D to make a final strip 310" long. Start sewing the binding strip in the middle of one of the sides of the quilt, placing the strip right side down and leaving an approximated 5" tail. Sew with 1/4" seam allowance (using straight stitch), aligning the strip's raw edge with the quilt top's raw edge.
- Stop stitching 1/4" before the edge of the quilt (DIAGRAM B 1). Clip the threads. Remove the quilt from under the machine presser foot. Fold the strip in a motion of 45° and upward, pressing with your fingers (DIAGRAM B2). Hold this fold with your finger, bring the strip down in line with the next edge, making a horizontal fold that aligns with the top edge of the quilt (DIAGRAM B3). Start sewing at 1/4" of the border, stitching all the layers. Do the same in the four corners of the quilt.

XX

*Congratulations
& enjoy*

XX



artgalleryfabrics.com

NOTE: While all possible care has been taken to ensure the accuracy of this pattern, We are not responsible for printing errors or the way in which individual work varies.

Please read instructions carefully before starting the construction of this quilt. If desired, wash and iron your fabrics before starting to cut.