





Sharon Holland

QUILT DESIGNED BY SHARON HOLLAND



COLOR OPTION

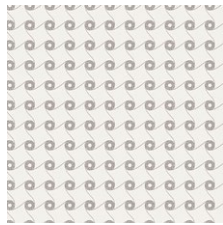


FABRICS DESIGNED BY SHARON HOLLAND

NORTH SHORE



CTL-49900  
HIGH-FLOWN LUNAR



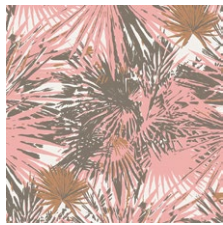
CTL-49901  
BUOYANT FOG



CTL-49902  
SAILCLOTH QUIETUDE



CTL-49903  
NETTING TWINE



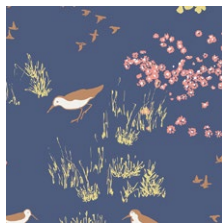
CTL-49904  
TROPICAL BRONZE



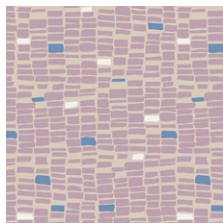
CTL-49905  
SPARKLER FLARE



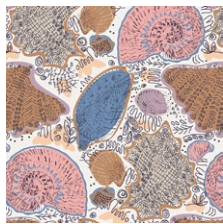
CTL-49906  
TRADE WINDS PORT



CTL-49907  
BEACHCOMBER NOCTURN



CTL-49908  
SAND BAR DRIFT WOOD

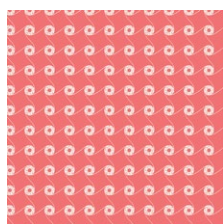


CTL-49909  
CONCHOLOGY SAND

SOUTH SHORE



CTL-59900  
HIGH-FLOWN SOLAR



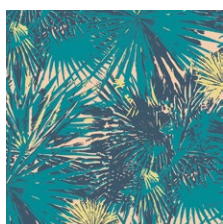
CTL-59901  
BUOYANT VISTA



CTL-59902  
SAILCLOTH SUNSET



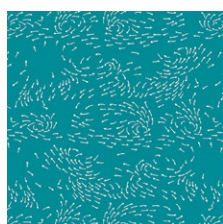
CTL-59903  
NETTING STRING



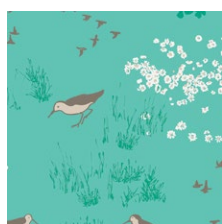
CTL-59904  
TROPICAL BREEZE



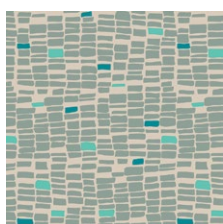
CTL-59905  
SPARKLER CELEBRATE



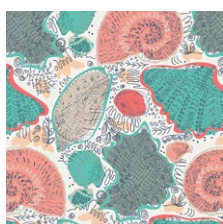
CTL-59906  
TRADE WINDS HARBOR



CTL-59907  
BEACHCOMBER TIDE



CTL-59908  
SAND BAR LAGOON



CTL-59909  
CONCHOLOGY DUNE





FINISHED SIZE | 72 1/2' x 72 1/2'

## FABRIC REQUIREMENTS

|                 |           |           |
|-----------------|-----------|-----------|
| Fabric <b>A</b> | CTL-49907 | 3/8 yd.   |
| Fabric <b>B</b> | CTL-59900 | 3/8 yd.   |
| Fabric <b>C</b> | CTL-59907 | 3/8 yd.   |
| Fabric <b>D</b> | CTL-59908 | 3/8 yd.   |
| Fabric <b>E</b> | CTL-59902 | 3/8 yd.   |
| Fabric <b>F</b> | CTL-49908 | 3/8 yd.   |
| Fabric <b>G</b> | CTL-49902 | 3/8 yd.   |
| Fabric <b>H</b> | CTL-49904 | 3/8 yd.   |
| Fabric <b>I</b> | CTL-49900 | 3/8 yd.   |
| Fabric <b>J</b> | CTL-49906 | 1 FQ.     |
| Fabric <b>K</b> | CTL-59904 | 1 FQ.     |
| Fabric <b>L</b> | PE-433    | 3 1/4 yd. |

### BACKING FABRIC

CTL- 49909 - 4 1/2 yds. *(Suggested)*

### BINDING FABRIC

PE-433 (Fabric **L**) *(included)*

## CUTTING DIRECTIONS

1/4" seam allowances are included.  
WOF means width of fabric.

Cut all strips from selvage to selvage. Remove the selvages.

- From each of the 1/2 yard prints: **Fabrics A-I**

Cut (1) 4-7/8" x 42" strip then cut into (8) 4-7/8" squares. Cut (1) 4-1/2" x 42" strip then cut into (8) 4-1/2" squares.

- From each of the fat quarters: **Fabrics J and K**

Cut (2) 4-7/8" x 21" strips then cut into (9) 4-7/8" squares

- From **Fabric L**:

Cut (12) 4-7/8" x 42" strip then cut into (90) 4-7/8" squares. Cut (8) 4-1/2" x 42" strips then cut into (72) 4-1/2" squares. Cut (8) 2-1/4" x 42" strips for binding.

## CONSTRUCTION

Read through all instructions before beginning. Sew all rights sides together with 1/4" seam allowance unless otherwise stated.

- Draw a diagonal line on the wrong side of each 4-7/8" square from Fabric **L**. (Diagram 1)

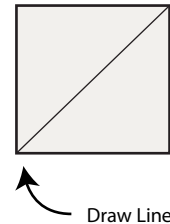


DIAGRAM 1

- Place a marked square right sides together with a 4-7/8" print square. Sew a 1/4" seam on each side of the line, then cut apart on the line. (Diagram 2.1 and 2.2)
- Makes 2 half-square triangle (HST) units. (Diagram 2.3)
- Open and press seam on one unit toward the dark side and seam on remaining unit toward the light side. Make a total of 180 assorted HST units.



DIAGRAM 2.1

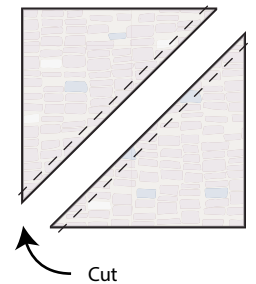


DIAGRAM 2.2

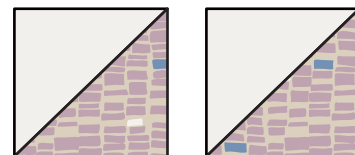


DIAGRAM 2.3



