

CROSSETTE

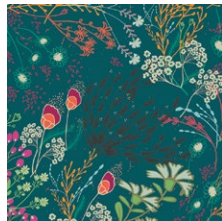


LEGENDARY

FABRICS DESIGNED BY PAT BRAVO



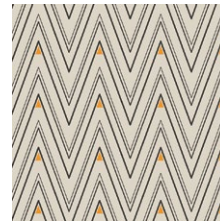
LGD-39703
BRIT BOUTIQUE BOLD



LGD-39705
MEADOW BOLD



LGD-39709
TRINKETS DREAMS



LGD-39707
COLLAR ENDS DREAMS



LGD-39702
WONDERLUST BOLD



LGD-39708
TRINKETS BOLD



LGD-49705
MEADOW BOHO



LGD-49709
TRINKETS SOUL



LGD-39704
FEMME METALE BOLD



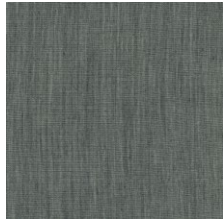
LGD-39710
FLECKS BOLD



ADDITIONAL BLENDERS FOR THIS PROJECT



PE-436
CREME DE LA CREME



DEN-S-2002
COOL FOLIAGE



PE-449
MANDARIN



PE-459
TURMERIC



PE-464
WARM WAVE

CROSSETTE

FINISHED SIZE | 80" x 80"

FABRIC REQUIREMENTS

Fabric A	LGD-39703	1 yd.
Fabric B	PE-436	3¾ yd.
Fabric C	LGD-39705	½ yd.
Fabric D	DEN-S-2002	½ yd.
Fabric E	LGD-39709	½ yd.
Fabric F	LGD-39707	⅝ yd.
Fabric G	LGD-39702	½ yd.
Fabric H	PE-449	⅜ yd.
Fabric I	LGD-39708	F8
Fabric J	LGD-49705	FQ
Fabric K	PE-459	⅜ yd.
Fabric L	LGD-49709	F8
Fabric M	LGD-39704	⅜ yd.
Fabric N	PE-464	⅜ yd.
Fabric O	LGD-39710	¾ yd.

BACKING FABRIC

LGD-39704 7½ yds. (*Suggested*)

BINDING FABRIC

LGD-39710 (Fabric **O**) (*Included*)

CUTTING DIRECTIONS

*¼" seam allowances are included.
WOF means width of fabric.*

- Two (2) 16⅞" squares from fabric **A**.
- Two (2) 10" squares from fabric **A**.
- Eight (8) 4½" squares from fabric **A**.
- Two (2) 16⅞" squares from fabric **B**.
- Nine (9) 10" squares from fabric **B**.
- Four (4) 28½" x 4½" rectangles from fabric **B**.
- Four (4) 24½" x 4½" rectangles from fabric **B**.
- Eight (8) 12½" x 4½" rectangles from fabric **B**.
- Sixteen (16) 8½" x 4½" rectangles from fabric **B**.
- Forty Four (44) 4½" squares from fabric **B**.
- Three (3) 10" squares from fabric **C**.
- Twelve (12) 4½" squares from fabric **C**.
- Three (3) 10" squares from fabric **D**.
- Four (4) 4⅞" squares from fabric **D**.
- Four (4) 8½" x 4½" rectangles from fabric **E**.
- Eight (8) 4½" squares from fabric **E**.
- Four (4) 4⅞" squares from fabric **E**.
- Eight (8) 4½" squares from fabric **F**.
- Twelve (12) 8½" x 4½" rectangles from fabric **F**.
- Two (2) 10" squares from fabric **G**.
- Twelve (12) 4½" squares from fabric **G**.
- One (1) 10" square from fabric **H**.
- Four (4) 4⅞" squares from fabric **H**.
- Four (4) 4⅞" squares from fabric **I**.
- Eight (8) 4½" squares from fabric **J**.
- Four (4) 8½" x 4½" rectangles from fabric **J**.
- One (1) 10" square from fabric **K**.
- Four (4) 4⅞" squares from fabric **K**.
- Four (4) 4⅞" squares from fabric **L**.
- Eight (8) 4½" squares from fabric **M**.
- Four (4) 8½" x 4½" rectangles from fabric **M**.
- One (1) 10" square from fabric **N**.
- Four (4) 4½" squares from fabric **N**.
- Four (2) 4⅞" squares from fabric **O**.
- Twelve (12) 4½" squares from fabric **O**.
- Four (4) 8½" x 4½" rectangles from fabric **O**.

CONSTRUCTION

Sew all rights sides together with $\frac{1}{4}$ " seam allowance.
HST means *Half Square Triangles*.

Magic 8 technique

- Place one (1) 10" square from fabrics **A** and **B** right sides facing together.
- Draw a line diagonally corner to corner using a mechanical pencil or frixion pen.



DIAGRAM 1

- Stitch $\frac{1}{4}$ " on each side of the drawn lines.

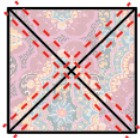


DIAGRAM 2

- Cut the squares in both directions.

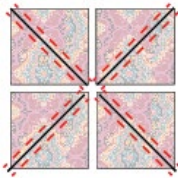


DIAGRAM 3

- Cut the squares diagonally corner to corner.

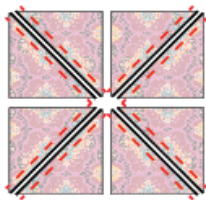


DIAGRAM 4

- Trim each HST to $4\frac{1}{2}$ ". You will have a total of (8) **AB** hst.

AB



DIAGRAM 5

- Repeat the same Magic 8 instructions for the following fabric combinations:

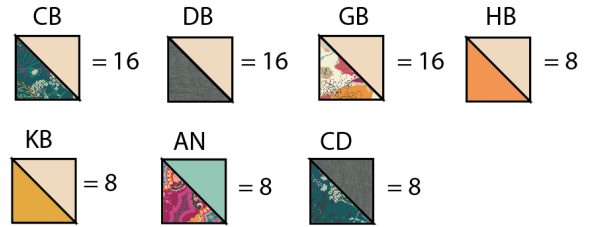
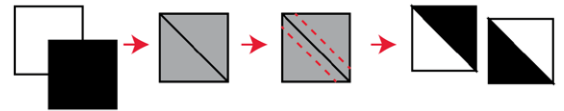


DIAGRAM 6

HST method:

- Take two (2) $4\frac{7}{8}$ " squares.
- Draw a line diagonally corner to corner using a mechanical pencil or frixion pen.
- Stitch $\frac{1}{4}$ " on each side from the drawn lines.
- Cut the pieces apart along the marked diagonal line.
- Press seam open and trim to a $4\frac{1}{2}$ " perfect square.



- These HSTs are directional fabric, so follow the diagram below for each fabric direction.

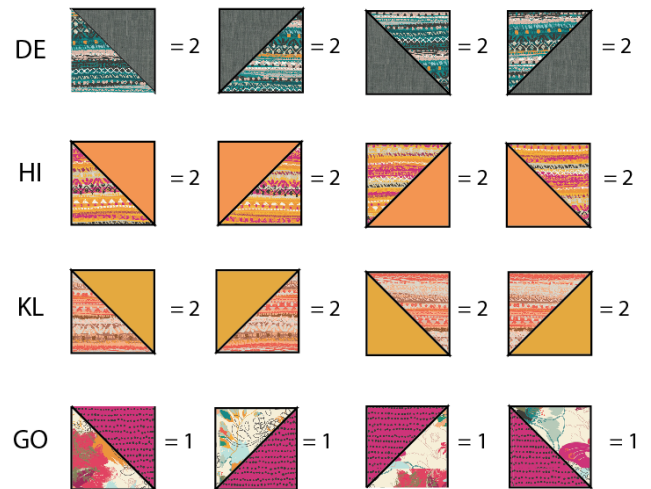


DIAGRAM 7

- Take two (2) $16\frac{7}{8}$ " squares from fabrics **A** and **B** and repeat the HST method in order to create a total of four (4) **AB** squares.
- Trim each square to $16\frac{1}{2}$ " x $16\frac{1}{2}$ ".



DIAGRAM 8

Flying Geese Method:

- Take one (1) $8\frac{1}{2}$ " x $4\frac{1}{2}$ " rectangle and two (2) $4\frac{1}{2}$ " squares.
- Place one $4\frac{1}{2}$ " square on top of the $8\frac{1}{2}$ " x $4\frac{1}{2}$ " rectangle.
- Align it to the left side of the rectangle, right sides facing together and draw a diagonal line on top of the square following the diagram below.



DIAGRAM 9

- Stitch on the drawn line.
- Trim excess fabric leaving $\frac{1}{4}$ " seam allowance and press open.



DIAGRAM 10

- Take one (1) $4\frac{1}{2}$ " square and align it on the right side of the fabric $8\frac{1}{2}$ " x $4\frac{1}{2}$ " rectangle, right sides facing together.
- Draw a diagonal line on top of the square.
- Stitch on the drawn line.
- Trim excess fabric leaving $\frac{1}{4}$ " seam allowance and press open.



DIAGRAM 11

- Follow the diagram bellow for each flying geese fabric combination.

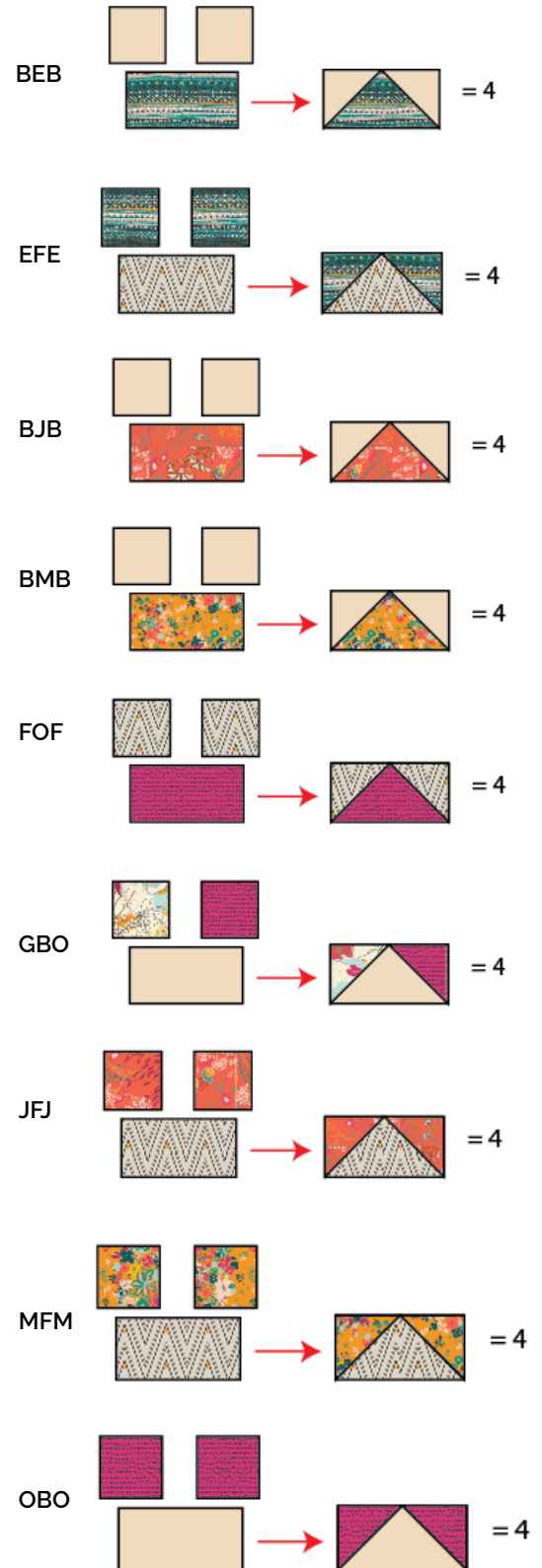


DIAGRAM 12

- For Row 10, take two (2) **BEB**, two (2) **EFE**, two (2) **BJB**, two (2) **JFJ**, two (2) **BMB**, two (2) **MFM**, two (2) **FOF**, two (2) **OBO**, two (2) **GBO** and center block and join each piece following the diagram below.



DIAGRAM 16

- Follow the diagram below for rows 5-15 assembly.

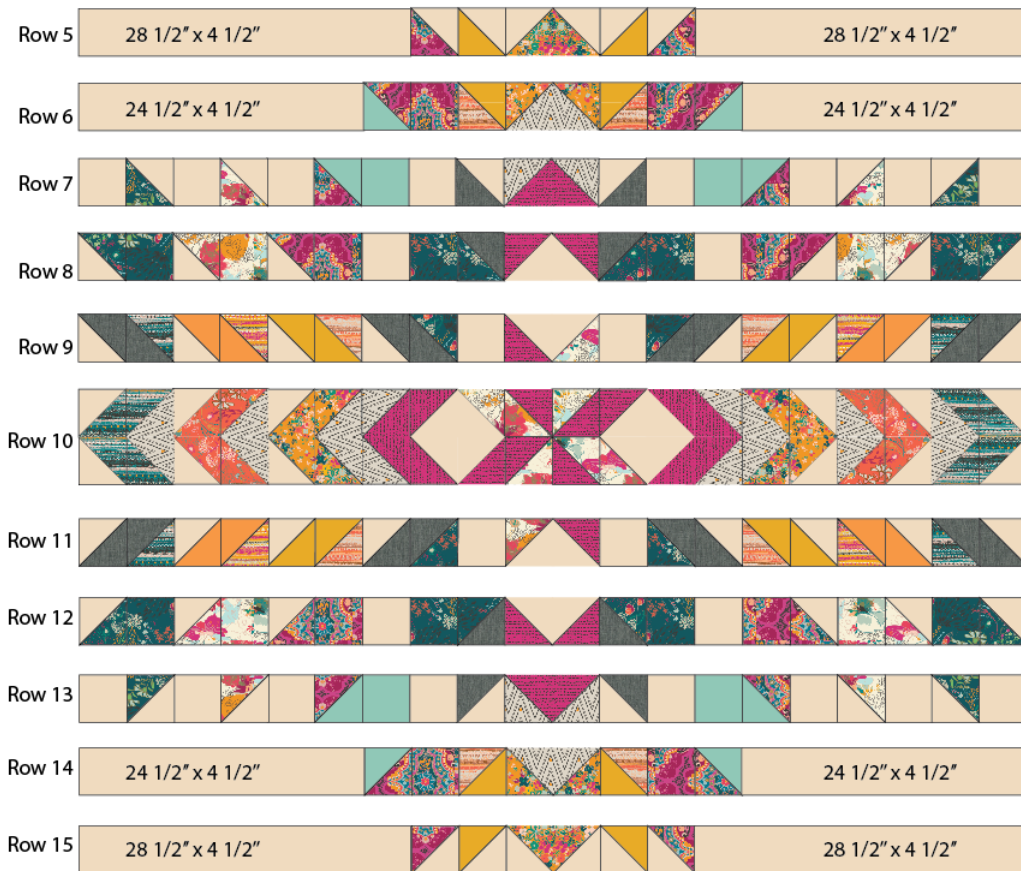


DIAGRAM 17

- Follow the diagram below for rows 16-19 assembly.



DIAGRAM 18

- One you assemble rows 16-19, pair two (2) 16½" **AB** hst's on each side of the unit, following the diagram below.



DIAGRAM 19

- Join all rows together in order to complete your quilt top.



DIAGRAM 20

XXXXXXXXXXXXXXXXXXXXXXXXXXXXXXXXXXXX

*Congratulations
& enjoy*

XXXXXXXXXXXXXXXXXXXXXXXXXXXXXXXXXXXX



artgalleryfabrics.com

NOTE: While all possible care has been taken to ensure the accuracy of this pattern, We are not responsible for printing errors or the way in which individual work varies.

Please read instructions carefully before starting the construction of this quilt. If desired, wash and iron your fabrics before starting to cut.