

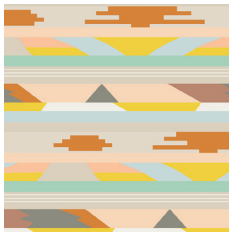


ARIZONA —+ after

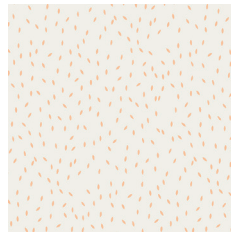


FABRICS DESIGNED BY APRIL RHODES

MESA



AZA-6880
MESA MOJAVE



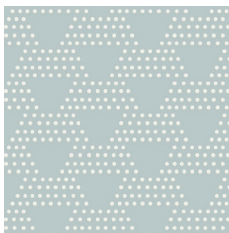
AZA-6881
SCATTER APRICOT



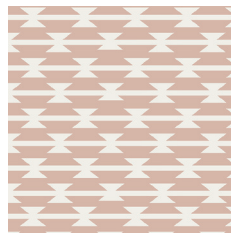
AZA-6882
PAÑO SPRING



AZA-6883
OJOS SMOKE



AZA-6884
STRATA MIST

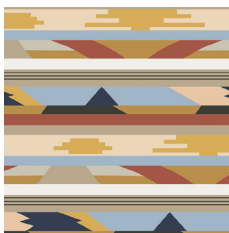


AZA-6886
TOMAHAWK STRIPE BLUSH

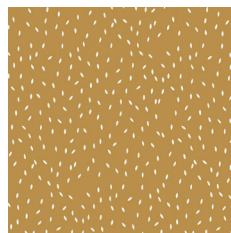


AZA-6887
ARID HORIZON SUN

CAÑON



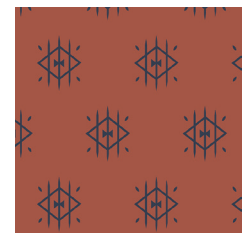
AZA-7880
MESA GRANDE



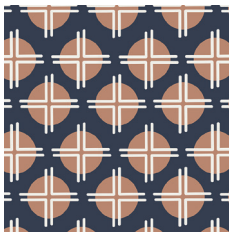
AZA-7881
SCATTER WOOD



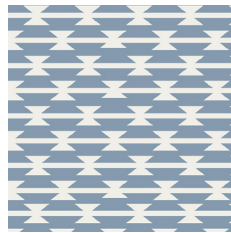
AZA-7882
PAÑO STONE



AZA-7883
OJOS FLAME



AZA-7885
CLAY SUNDOT DUSK



AZA-7886
TOMAHAWK STRIPE CLOUD



AZA-7887
ARID HORIZON EARTH



- Take two (2) $6\frac{1}{2}'' \times 2''$ rectangles from fabric **E**, and two (2) $9\frac{1}{2}'' \times 2''$ rectangles from fabric **E**.
- Follow Diagram 2 for fabric placement and attachment.

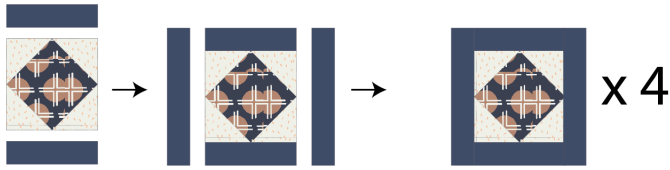


DIAGRAM 2

- Take thirty two (32) $3\frac{1}{2}'' \times 3\frac{1}{2}''$ squares from fabric **B**, eight (8) $9\frac{1}{2}'' \times 2''$ rectangles from fabric **D**, eight (8) $12\frac{1}{2}'' \times 2''$ rectangles from fabric **D**, sixteen (16) $4\frac{1}{2}'' \times 4\frac{1}{2}''$ squares from fabric **E**, eight (8) $12\frac{1}{2}'' \times 2\frac{1}{2}''$ rectangles from fabric **A** and eight (8) $16\frac{1}{2}'' \times 2\frac{1}{2}''$ rectangles from fabric **A**.
- Follow Diagram 3 for fabric placement and attachment.

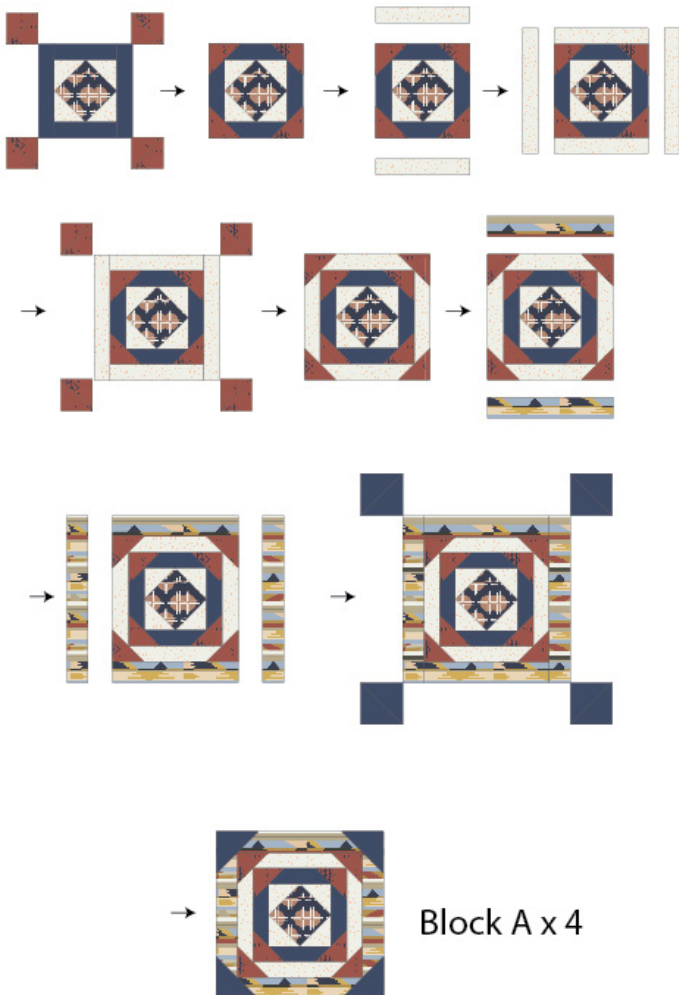


DIAGRAM 3

Block B

- Four (4) Block B are required for the quilt.
- Take eight (8) $16\frac{1}{2}'' \times 4\frac{1}{2}''$ rectangles from fabric **D**, four (4) $16\frac{1}{2}'' \times 8\frac{1}{2}''$ rectangles from fabric **A**, and sixteen (16) $4\frac{1}{2}'' \times 4\frac{1}{2}''$ squares from fabric **E**.
- Follow Diagram 4 for fabric placement and attachment.

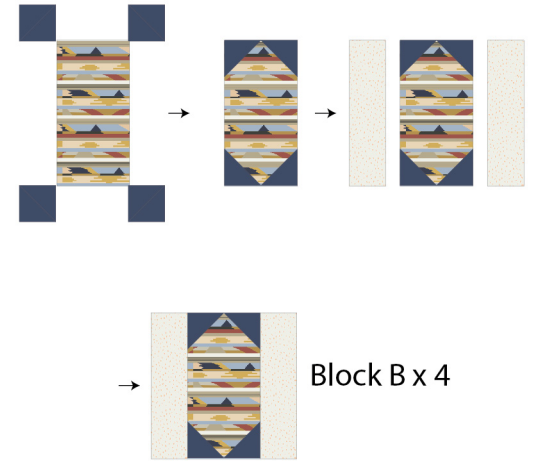


DIAGRAM 4

Blocks C1 and C2

- Four (4) Block C1 and four (4) Block C2 are required for the quilt.
- Take eight (8) $16\frac{1}{2}'' \times 8\frac{1}{2}''$ rectangles from fabric **F** and eight (8) $8\frac{1}{2}'' \times 8\frac{1}{2}''$ squares from fabric **C**.
- Follow Diagram 5 for fabric placement and attachment.

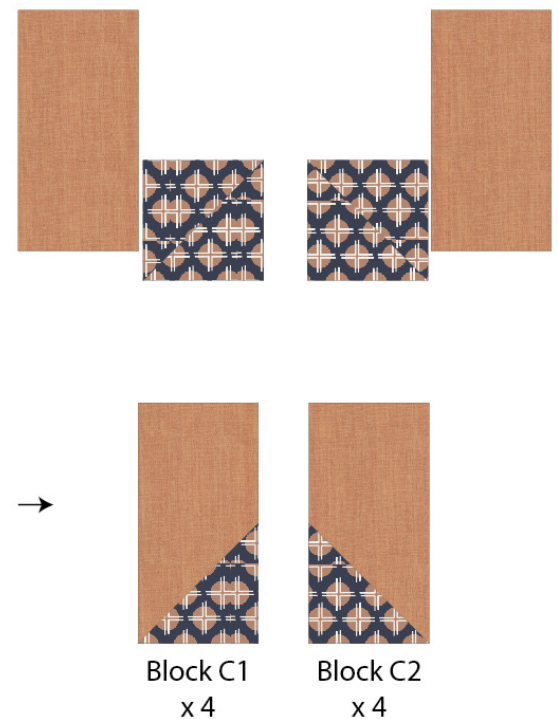


DIAGRAM 5

