



APRICITY



FUSIONS



by AGF

FREE PATTERN



APRICITY

QUILT DESIGNED BY AGF STUDIO AGFstudio



reverie FUSION

FABRICS DESIGNED BY AGF STUDIO



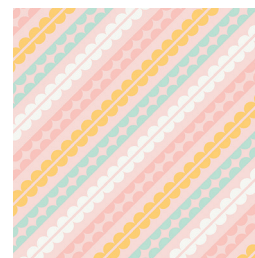
FUS-R-800
SPRAYED BLOOMS REVERIE



FUS-R-801
+ YOUR HEART REVERIE



FUS-R-802
FLORAL FROLIC REVERIE



FUS-R-803
ENTRYWAYS REVERIE



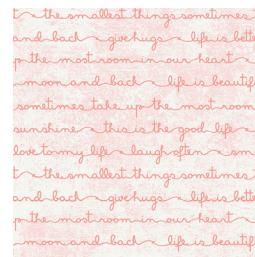
FUS-R-804
AVES CHATTER REVERIE



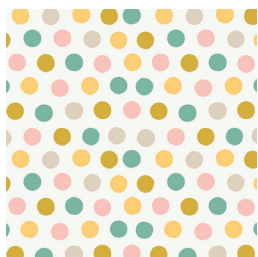
FUS-R-805
I SPY REVERIE



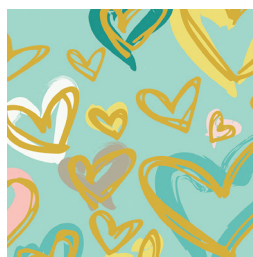
FUS-R-806
ABIDING REVERIE



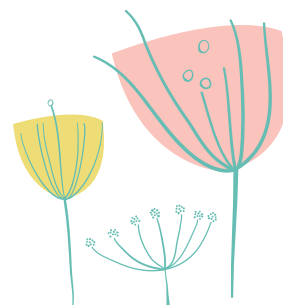
FUS-R-807
HEARTFELT REVERIE



FUS-R-808
COTTONTAILS REVERIE



FUS-R-809
WHERE THE HEART IS REVERIE



APRICITY

FINISHED SIZE | 60" x 86"

FABRIC REQUIREMENTS

Fabric A	FUS-R-800	1 $\frac{3}{8}$ yd.
Fabric B	FUS-R-801	$\frac{3}{8}$ yd.
Fabric C	FUS-R-804	$\frac{1}{2}$ yd.
Fabric D	FUS-R-805	1 yd.
Fabric E	FUS-R-808	$\frac{1}{2}$ yd.
Fabric F	FUS-R-806	$\frac{5}{8}$ yd.
Fabric G	FUS-R-807	$\frac{3}{8}$ yd.
Fabric H	FUS-R-803	$\frac{1}{2}$ yd.

PURE ELEMENTS

Fabric I	PE-433	1 $\frac{5}{8}$ yd.
Fabric J	PE-434	$\frac{1}{4}$ yd.

BINDING FABRIC

Fabric **A** FUS-R-800 (Included)

BACKING FABRIC

FUS-R-806 (Recommended) 5 yds.

CUTTING DIRECTIONS

$\frac{1}{4}$ " seam allowances are included.
WOF means width of fabric.

- Six (6) 2 $\frac{1}{2}$ ' x WOF strips from fabric **A**
- Six (6) 2 $\frac{1}{2}$ ' x 22' strips from fabric **A**
- Two (2) 2 $\frac{1}{2}$ ' x WOF strips from fabric **B**
- Two (2) 2 $\frac{1}{2}$ ' x 22' strips from fabric **B**
- Two (2) 2 $\frac{1}{2}$ ' x WOF strips from fabric **C**
- Four (4) 2 $\frac{1}{2}$ ' x 22' strips from fabric **C**
- Six (6) 2 $\frac{1}{2}$ ' x WOF strips from fabric **D**
- Six (6) 2 $\frac{1}{2}$ ' x 22' strips from fabric **D**
- Four (4) 2 $\frac{1}{2}$ ' x WOF strips from fabric **E**
- Four (4) 2 $\frac{1}{2}$ ' x 16' strips from fabric **E**
- Four (4) 2 $\frac{1}{2}$ ' x WOF strips from fabric **F**
- Four (4) 2 $\frac{1}{2}$ ' x 22' strips from fabric **F**
- Two (2) 2 $\frac{1}{2}$ ' x WOF strips from fabric **G**

- Two (2) 2 $\frac{1}{2}$ ' x 22' strips from fabric **G**
- Four (4) 2 $\frac{1}{2}$ ' x WOF strips from fabric **H**
- Two (2) 2 $\frac{1}{2}$ ' x 16' strips from fabric **H**
- Nineteen (19) 2 $\frac{1}{2}$ ' x WOF strips from fabric **I**
- Six (6) 2 $\frac{1}{2}$ ' x 16' strips from fabric **I**
- Eighteen (18) 2 $\frac{7}{8}$ " squares from fabric **I**
- Four (4) 2 $\frac{1}{2}$ ' x 4 $\frac{1}{2}$ ' strips from fabric **I**
- Eighteen (18) 2 $\frac{7}{8}$ " squares from fabric **J**

CONSTRUCTION

Sew all rights sides together with $\frac{1}{4}$ " seam allowance.

HST (Half Square Triangle) Construction

- First take a square from fabric **J** and lay it on top of a square from fabric **I** facing right sides.
- Draw a line down the center diagonally, corner to corner as shown in Diagram 1.
- Using that line as a guide and your $\frac{1}{4}$ " patchwork foot sew a $\frac{1}{4}$ " away from the line all the way down on both sides.
- When finished cut down the marked line. Press open.
- You should have two (2) 2 $\frac{1}{2}$ ' x 2 $\frac{1}{2}$ " HST.
- Repeat the previously steps with all the squares from fabrics **I** and **J**.

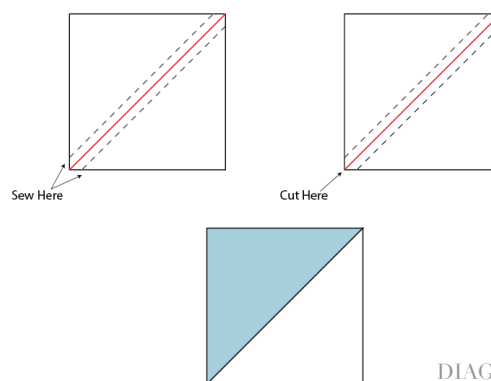
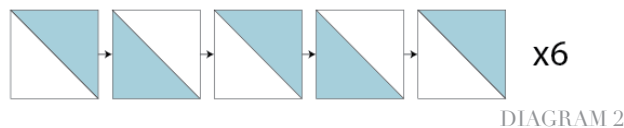


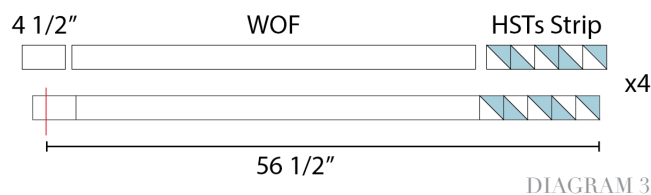
DIAGRAM 1

HSTs Strip construction:

- Attach five (5) of the HST together as shown in Diagram 2.
- Make 6.



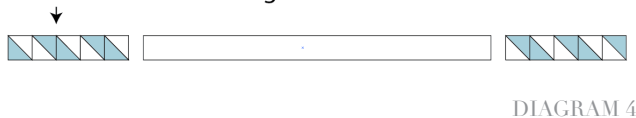
- Take one (1) HSTs strip, one (1) $2\frac{1}{2}$ x WOF strip from fabric I, and one (1) $2\frac{1}{2}$ x $4\frac{1}{2}$ rectangle from fabric I.
- Join them and press open.
- Trim it so that the final length is $56\frac{1}{2}$ '.
- Repeat the process until you have 4 total.
- For fabric placement and attachment follow Diagram 3.



Double HSTs Strip construction:

- Take one (1) $2\frac{1}{2}$ x WOF strip from fabric I and trim it to $2\frac{1}{2}$ x $36\frac{1}{2}$ '.
- Take one (1) HSTs strip, the $2\frac{1}{2}$ x $36\frac{1}{2}$ ' strip from fabric I and one (1) HSTs strip.
- Rotate the first HSTs strip 180 degrees.
- Join them as shown in Diagram 4.
- Press open.

Rotate this one 180 degrees



Strip A construction

- Take one (1) $2\frac{1}{2}$ x WOF strip and one (1) $2\frac{1}{2}$ x 22' strip and layer them creating a 90° angle.
- Sew them together in a 45° angle.
- Trim $\frac{1}{4}$ ' away from the seam and press open.
- Trim the strip down starting your measuring from the 22' strip side so your final strip measures $56\frac{1}{2}$ '.
- For fabric placement and attachment follow Diagram 5.

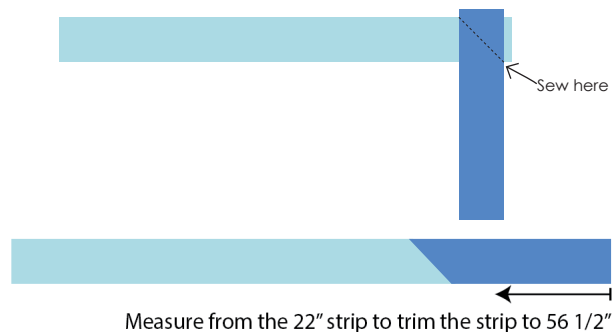


DIAGRAM 5

Strip B construction

- Take one (1) $2\frac{1}{2}$ x WOF strip and one (1) $2\frac{1}{2}$ x 16' strip and layer them creating a 90° angle.
- Sew them together in a 45° angle.
- Trim $\frac{1}{4}$ ' away from the seam and press open.
- Trim the strip down starting your measuring from the WOF strip side so your final strip measures $56\frac{1}{2}$ '.
- For fabric placement and attachment follow Diagram 6.

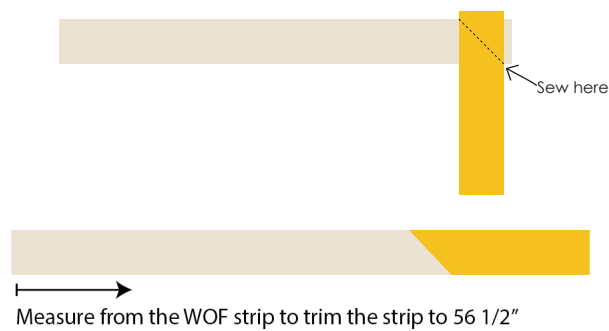


DIAGRAM 6

TOP ASSEMBLY

*$\frac{1}{4}$ " seam allowances are included.
WOF means width of fabric.*

- The top has three (3) different blocks joined by the HSTs strips and the Double HSTs strip.
- Start by joining:
- Block A > HSTs strip > Block B > HSTs strip > Block C > Double HSTs strip > Block C > HSTs strip > Block B > HSTs strip > Block A.
- Follow Diagram 7 for fabric placement and attachment.

