

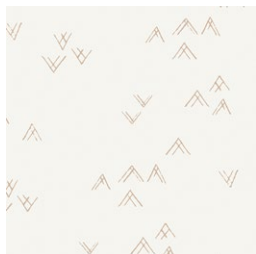
Adele

QUILT DESIGNED BY AGFstudio



Ballerina FUSION

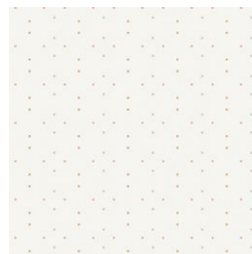
FABRICS DESIGNED BY AGF STUDIO



FUS-BL-1802
COMING HOME BALLERINA



FUS-BL-1809
MAGIJA BALLERINA



FUS-BL-1800
DOTTED VEIL BALLERINA



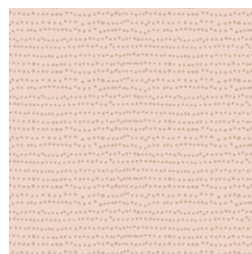
FUS-BL-1806
PLAYFUL SEAWEED



FUS-BL-1808
EIDELWEISS BALLERINA



FUS-BL-1807
POSITIVITY BALLERINA



FUS-BL-1805
FLECKS BALLERINA



Adele

FINISHED SIZE | 86" x 86"

FABRIC REQUIREMENTS

Fabric A	FUS-BL-1802	½ yd.
Fabric B	FUS-BL-1809	1½ yd.
Fabric C	FUS-BL-1800	2¼ yd.
Fabric D	FUS-BL-1806	1⅞ yd.
Fabric E	FUS-BL-1808	1 yd.
Fabric F	FUS-BL-1807	⅝ yd.
Fabric G	PE-471	⅝ yd.
Fabric H	PE-488	⅝ yd.
Fabric I	FE-518	⅞ yd.
Fabric J	FE-504	¼ yd.
Fabric K	DEN-S-2006	⅝ yd.
Fabric L	DEN-L-4000	2¼ yd.
Fabric M	PE-408	⅜ yd.
Fabric N	FUS-BL-1805	½ yd.

BACKING FABRIC
FUS-BL-1808 8yds (Suggested)

BINDING FABRIC
Fabric N FUS-BL-1805 (Included)

CUTTING DIRECTIONS

¼" seam allowances are included.
WOF means width of fabric.

Fabric A

- Cut three (3) 5½" x WOF strips.
- Sub-cut:
- Cut eight (8) template 1.
 - Cut four (4) template 2.

Fabric B (See Diagram 1)

- Cut eight (8) 5½" x WOF strips.
- Sub-cut:
- Cut eighteen (18) template 1.
 - Cut twelve (12) template 2.
 - Cut eighteen (18) template 1a.
 - Cut twelve (12) template 2a.

- Note that fabric B is directional. Please place template 1 and 1a how it shows on diagram 1.
- Also to maximize the use of your fabric without compromising the direction of the fabric alternate template 2 and 2a by rotating it 180°. See diagram below for reference.

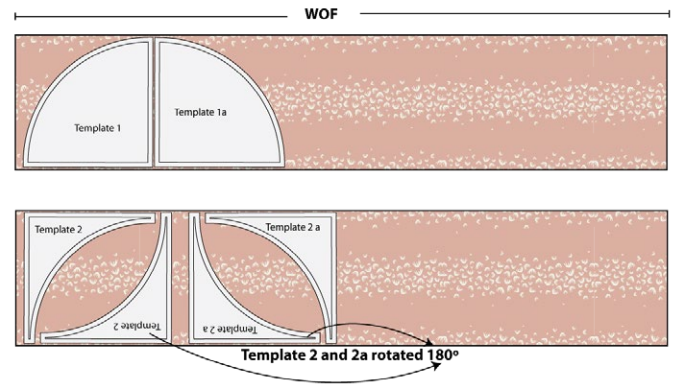


DIAGRAM 1

Fabric C

- Cut thirteen (13) 5½" x WOF strips.
- Sub-cut:
- Cut sixty eight (68) template 1.
 - Cut thirty two (32) template 2.

Fabric D

- Cut ten (10) 5½" x WOF strips.
- Sub-cut:
- Cut forty four (44) template 1.
 - Cut twenty eight (28) template 2.

Fabric E

- Cut five (5) 5½" x WOF strips.
- Sub-cut:
- Cut twenty eight (28) template 1.
 - Cut sixteen (16) template 2.

Fabric F

- Cut three (3) 5½" x WOF strips.
- Sub-cut:
- Cut eight (8) template 1.
 - Cut twelve (12) template 2.

CONSTRUCTION

Sew all rights sides together with 1/4" seam allowance.

- Pair templates according to diagram 2.

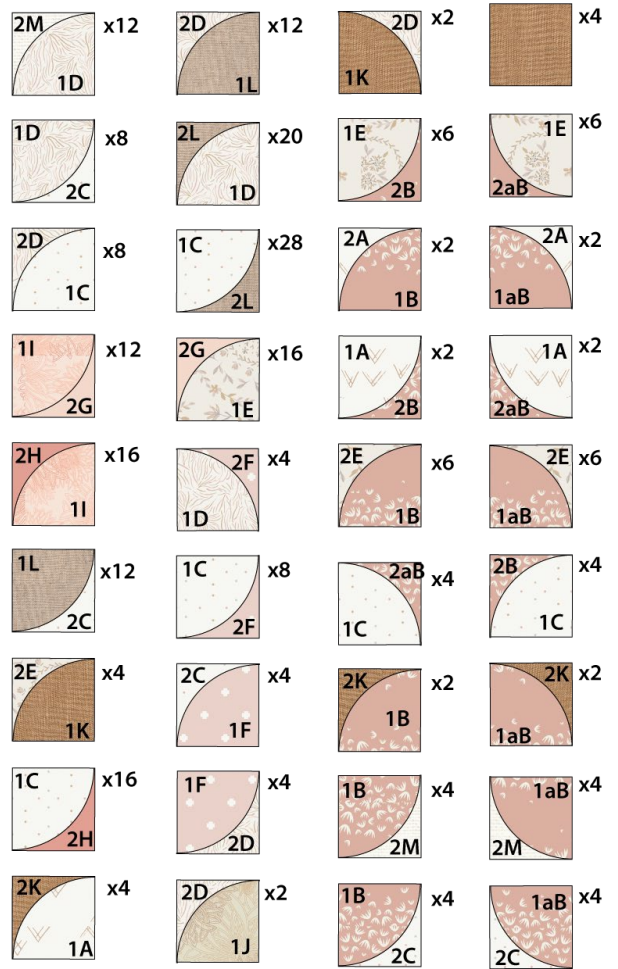


DIAGRAM 2

Fabric G

- Cut twenty eight (28) template 2.

Fabric H

- Cut three (3) 5½" x WOF strips.
- Sub-cut:
 - Cut thirty two (32) template 2.

Fabric I

- Cut three (3) 5½" x WOF strips.
- Sub-cut:
 - Cut twenty eight (28) template 1.

Fabric J

- Cut one (1) 5½" x WOF strips.
- Sub-cut:
 - Cut two (2) template 1.

Fabric K

- Cut two (2) 5½" x WOF strips.
- Sub-cut:
 - Cut six (6) template 1.
 - Cut eight (8) template 2.
 - Cut four (4) 5½" squares.

Fabric L

- Cut eight (8) 5½" x WOF strips.
- Sub-cut:
 - Cut twenty four (24) template 1.
 - Cut forty eight (48) template 2.
 - Cut eight (8) WOF x 3½" strips.

Fabric M

- Cut two (2) 5½" x WOF strips.
- Sub-cut:
 - Cut twenty (20) template 2.

For this project you will need two different blocks.

Block 1:

- After pairing all templates respectively, arrange them into eight rows of eight pieces each and sew them. See diagram 3 for reference.

- Row 1: 2E-1K / 2K-1A / 2A-1B / 2B-1C / 1C-2L / 2D-1L / 2L-1C / 1C-2G.
- Row 2: K / 1A-2B / 1B-2C / 2L-1D / 2L-1D / 1L-2C / 2H-1I / 2G-1E.
- Row 3: 2K-1B / 2B-1C / 1C-2L / 2D-1L / 2L-1C / 1C-2H / 1I-2G / 2E-1B.
- Row 4: 1B-2C / 2L-1D / 2L-1D / 1L-2C / 2H-1I / 2G-1E / 1E-2B / 2M-1D.
- Row 5: 1C-2L / 2D-1L / 2L-1C / 1C-2H / 1I-2G / 2E-1B / 1B-2M / 1D-2C.
- Row 6: 1D-2L / 1L-2C / 2H-1I / 2G-1E / 1E-2B / 2M-1D / 2D-1C / 1C-2F.
- Row 7: 2L-1C / 1C-2H / 1I-2G / 2E-1B / 1B-2M / 1D-2C / 2C-1F / 2F-1D.
- Row 8: 2H-1I / 2G-1E / 1E-2B / 2M-1D / 2D-1C / 1C-2F / 1F-2D / 2D-1J.

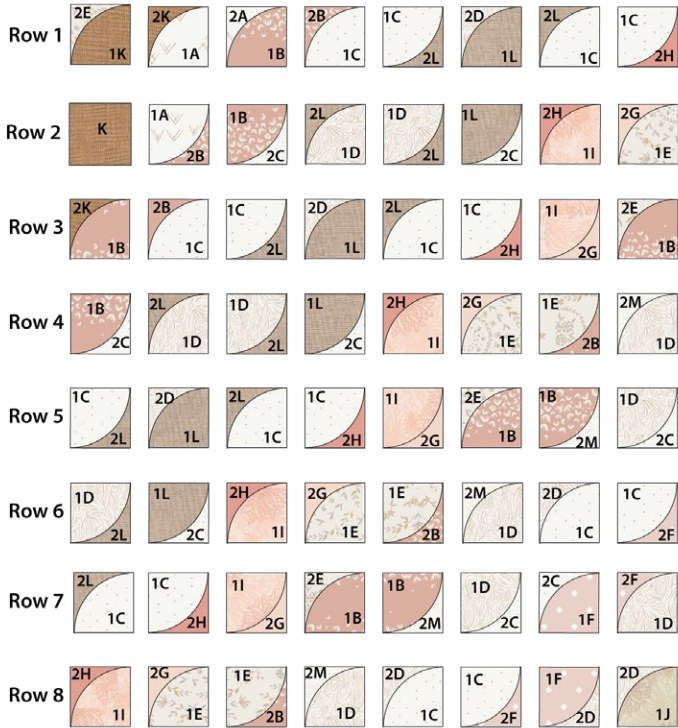


DIAGRAM 3

- Sew rows together.

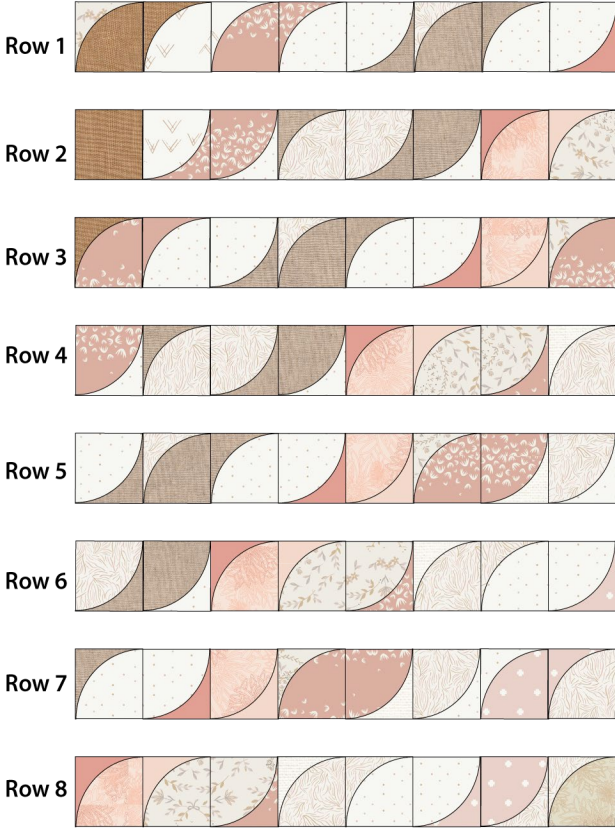


DIAGRAM 4

Block 1:

- Make a total of two (2) block 1.

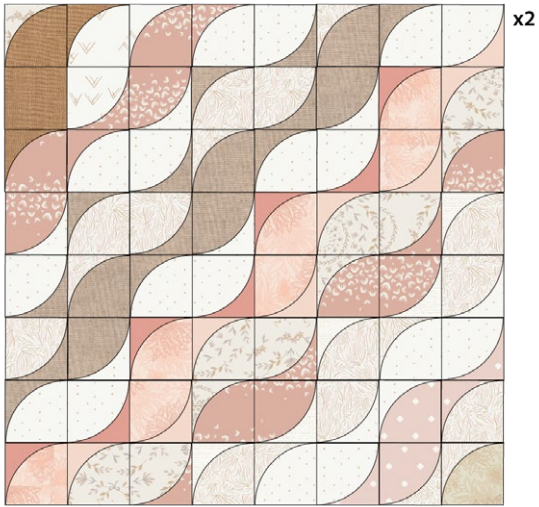


DIAGRAM 5

- Join two (2) 3½" x WOF strips from fabric L and trim it to 81" x 3½". (Repeat this step one more time).
- Attach one (1) 81" x 3½" strip to the top of the quilt top and one (1) the bottom. See diagram 11 for reference.



DIAGRAM 11

- Join two (2) 3½" x WOF strips from fabric L and trim it to 86½" x 3½" (Repeat this step one more time).
- Attach one (1) 86½" x 3½" strip on each side of the quilt top. See diagram 12 for reference.



DIAGRAM 12

QUILT ASSEMBLY

Sew rights sides together.

- Place BACKING FABRIC on a large surface wrong side up. Stretch it with masking tape against that surface.
- Place BATTING on top of backing fabric.
- Place TOP on top of the batting with right side facing up. Smooth away wrinkles using your hands.
- Pin all layers together and baste with basting thread, using long stitches. You can also use safety pins to join the layers.
- Machine or hand quilt starting at the center and working towards the corners. Remember that quilting motifs are a matter of personal preference. Have fun choosing yours!
- After you finished, trim excess of any fabric or batting, squaring the quilt to proceed to bind it.

BINDING

Sew rights sides together.

- Cut enough strips $1\frac{1}{2}$ " wide by the width of the fabric **N** to make a final strip 354" long. Start sewing the binding strip in the middle of one of the sides of the quilt, placing the strip right side down and leaving an approximated 5" tail. Sew with $\frac{1}{4}$ " seam allowance (using straight stitch), aligning the strip's raw edge with the quilt top's raw edge.
- Stop stitching $\frac{1}{4}$ " before the edge of the quilt (DIAGRAM B 1). Clip the threads. Remove the quilt from under the machine presser foot. Fold the strip in a motion of 45° and upward, pressing with your fingers (DIAGRAM B 2). Hold this fold with your finger, bring the strip down in line with the next edge, making a horizontal fold that aligns with the top edge of the quilt (DIAGRAM B 3). Start sewing at $\frac{1}{4}$ " of the border, stitching all the layers. Do the same in the four corners of the quilt.

- Stop stitching before you reach the last 5 or 6 inches. Cut the threads and remove the quilt from under the machine presser foot. Lay the loose ends of the binding flat along the quilt edge, folding the ends back on themselves where they meet. Press them together to form a crease. Using this crease as the stitching line, sew the two open ends of the binding with right sides together (you can help yourself marking with a pencil if the crease is difficult to see).
- Trim seam to $\frac{1}{4}$ " and press open. Complete the sewing. Turn binding to back of the quilt, turn raw edge inside and stitch by hand using blind stitch.

