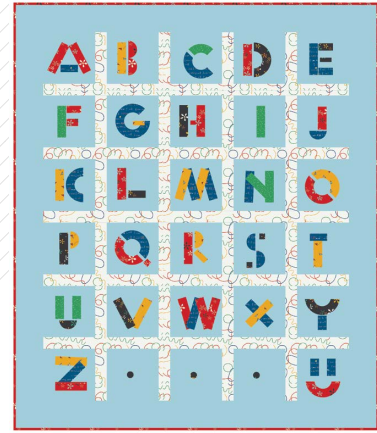




QUILT DESIGNED BY AGF STUDIO

AGFstudio

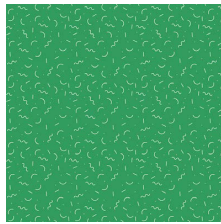


SISU! FABRICS DESIGNED BY AGF STUDIO

COURAGE ELEMENTAL



SSU-10050
SCHOOL OF SISU ESSENCE



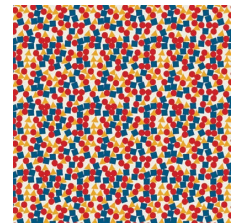
SSU-10051
THINGAMAJIGS GIGGLING



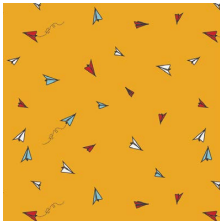
SSU-10052
HEI SKY CLOUDINE



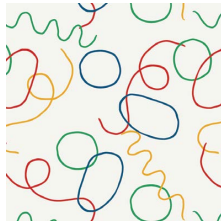
SSU-10053
WILLFUL BUDS CARDINAL



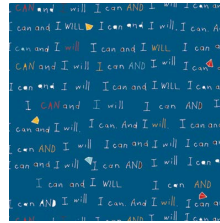
SSU-10054
BUILDING BLOCKS RUBIK



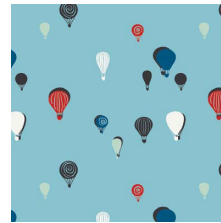
SSU-10055
PAPER PLANE HOPES



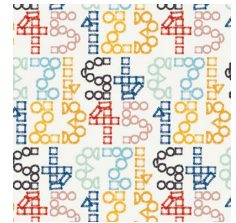
SSU-10056
WHATCHAMACALLITS
OVERFLYING



SSU-10057
THE MOTTO HIGHLIGHTED



SSU-10058
SPACE BUBBLES FIZZ

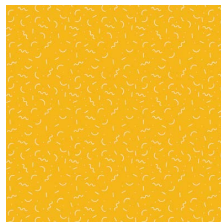


SSU-10059
COUNTDOWN AND GO!

COURAGE RADIANT



SSU-20050
SCHOOL OF SISU SPIRIT



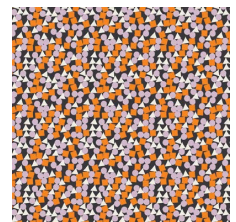
SSU-20051
THINGAMAJIGS LAUGHING



SSU-20052
HEI SKY LAVENDERINE



SSU-20053
WILLFUL BUDS CHALKBOARD



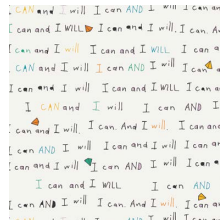
SSU-20054
BUILDING BLOCKS
BROUHAHA



SSU-20055
PAPER PLANE DREAMS



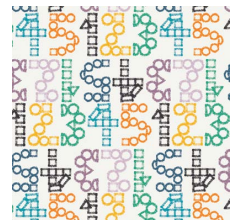
SSU-20056
WHATCHAMACALLITS
UNDERWATER



SSU-20057
THE MOTTO DEFINED



SSU-20058
SPACE BUBBLES ZEST



SSU-20059
COUNTDOWN AND POW!





FINISHED SIZE | 63" x 74"

FABRIC REQUIREMENTS

Fabric A	SSU-10056	1 yd.
Fabric B	SSU-20053	5/8 yd.
Fabric C	SSU-10057	1/4 yd.
Fabric D	SSU-10055	1/4 yd.
Fabric E	SSU-10051	1/8 yd.
Fabric F	SSU-10055	1/8 yd.
Fabric G	PE-434	3 1/4 yd.

BACKING FABRIC

SSU-10050 3 1/4 yds. *(Suggested)*

BINDING FABRIC

SSU-10053 (Fabric B) *(Included)*

CUTTING DIRECTIONS

*1/4" seam allowances are included.
WOF means width of fabric.*

- Twenty four (24) 9 1/2" x 2 1/2" rectangles from fabric A.
- Seven (7) WOF x 2 1/2" from fabric A.
Sub cut five (5) 5 3/2" x 2 1/2" strips.
- Ten (10) 5 1/2" x 1 1/2" strips from fabric B.
- One (1) 4" x 1 1/2" strip from fabric B.
- One (1) 2 1/2" x 1 1/4" strip from fabric B.
- One (1) 2" x 1 1/4" strip from fabric B.
- One (1) 2" x 3/4" strip from fabric B.
- One (1) 1" x 1" square from fabric B.
- Two (2) template 1 from fabric B.
- Three (3) template 2 from fabric B.

- Seven (7) 5 1/2" x 1 1/2" strips from fabric C.
- Two (2) 3" x 1 1/2" strips from fabric C.
- Two (2) 3" x 1 1/4" strips from fabric C.
- One (1) 2 1/2" x 1 1/4" strip from fabric C.
- One (1) 2 1/2" x 1 1/2" strip from fabric C.
- Three (3) template 1 from fabric C.
- One (1) template 2 from fabric C.
- One (1) template 3 from fabric C.
- One (1) template 4 from fabric C.
- One (1) template 5 from fabric C.
- Eight (8) 5 1/2" x 1 1/2" rectangles from fabric D.
- One (1) 2 1/2" x 1" rectangle from fabric D.
- One (1) 2" x 3/4" rectangle from fabric D.
- Two (2) template 1 from fabric D.
- One (1) template 2 from fabric D.
- Four (4) 5 1/2" x 1 1/2" rectangles from fabric E.
- Two (2) 4" x 1 1/2" strips from fabric E.
- One (1) template 6 from fabric E.
- Three (3) 5 1/2" x 1 1/2" strips from fabric F.
- One (1) 3" x 1 1/4" strips from fabric F.
- One (1) 2 1/2" x 1 1/4" strips from fabric F.
- One (1) 2" x 3/4" rectangles from fabric F.
- Two (2) 1" x 1" squares from fabric F.
- One (1) template 1 from fabric F.
- Two (2) template 2 from fabric F.
- Three (3) template 7 from fabric F.
- Thirty (30) 9 1/2" x 9 1/2" squares from fabric G.
- Seven (7) WOF x 5 1/2" strips from fabric G.

Sub cut two (2) 6 4 1/2" x 5 1/2" strips.

Sub cut two (2) 6 3 1/2" x 5 1/2" strips.

CONSTRUCTION

Sew all rights sides together with ¼" seam allowance.

- Take thirty (30) 9½" x 9½" squares from fabric G.
- Use the templates and follow Diagram 1 to applique the letters, the three dots and the happy face in each square.
- Make sure to use template 3 for letter C, and template 4 for letter K.



DIAGRAM 1

- Take twenty four (24) 9½" x 2½" rectangles from fabric A and the thirty (30) 9½" x 9½" squares from fabric G.
- Join them in order following Diagram 2
- Row 1: A - A - B- A - C- A - D- A - E
- Row 2: F- A - G- A - H- A - I- A - J
- Row 3: K- A - L- A - M- A - N- A - O
- Row 4: P- A - Q- A - R- A - S- A - T
- Row 5: U- A - V- A - W- A - X- A - Y- A - Z
- Row 6: Z- A - . - A - . - A - . - A - :)



- Take five (5) 53½" x 2½" strips from fabric A, and join them to the strip sets as follows:
- Row 1 - A - Row 2 - A - Row 3 - A - Row 4 - A - Row 5 - A - Row 6:

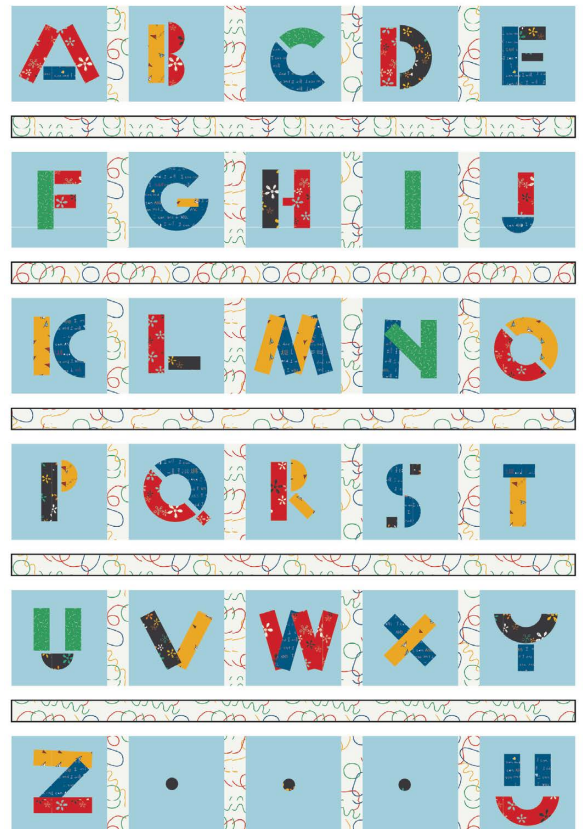


DIAGRAM 2

- Take two (2) 64½" x 5½" strips from fabric G, and join them to each side of the blocks following Diagram 2.
- Take two (2) 63½" x 5½" strips from fabric G, and join them to the top and bottom of the block.
- Follow Diagram 3.

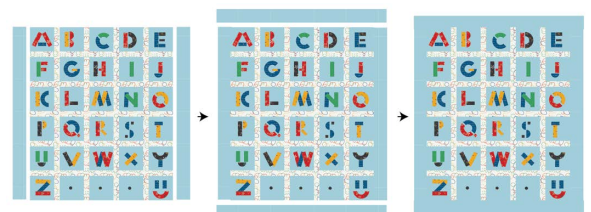


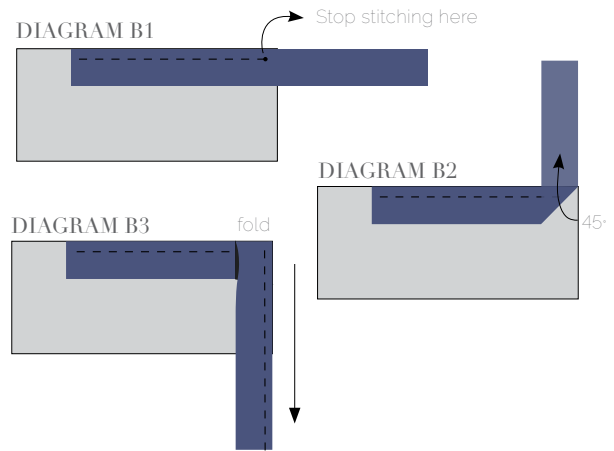
DIAGRAM 3

QUILT ASSEMBLY

Sew rights sides together.

- Place BACKING FABRIC on a large surface wrong side up. Stretch it with masking tape against that surface.
- Place BATTING on top of backing fabric.
- Place TOP on top of the batting with right side facing up. Smooth away wrinkles using your hands.
- Pin all layers together and baste with basting thread, using long stitches. You can also use safety pins to join the layers.
- Machine or hand quilt starting at the center and working towards the corners. Remember that quilting motifs are a matter of personal preference. Have fun choosing yours!
- After you finished, trim excess of any fabric or batting, squaring the quilt to proceed to bind it.

- Stop stitching before you reach the last 5 or 6 inches. Cut the threads and remove the quilt from under the machine presser foot. Lay the loose ends of the binding flat along the quilt edge, folding the ends back on themselves where they meet. Press them together to form a crease. Using this crease as the stitching line, sew the two open ends of the binding with right sides together (you can help yourself marking with a pencil if the crease is difficult to see).
- Trim seam to ¼" and press open. Complete the sewing. Turn binding to back of the quilt, turn raw edge inside and stitch by hand using blind stitch.



artgalleryfabrics.com

NOTE: While all possible care has been taken to ensure the accuracy of this pattern, We are not responsible for printing errors or the way in which individual work varies. Please read instructions carefully before starting the construction of this quilt. If desired, wash and iron your fabrics before starting to cut.

Sew rights sides together.

- Cut enough strips 1½" wide by the width of the fabric B to make a final strip 284" long. Start sewing the binding strip in the middle of one of the sides of the quilt, placing the strip right side down and leaving an approximated 5" tail. Sew with ¼" seam allowance (using straight stitch), aligning the strip's raw edge with the quilt top's raw edge.
- Stop stitching ¼" before the edge of the quilt (DIAGRAM B 1). Clip the threads. Remove the quilt from under the machine presser foot. Fold the strip in a motion of 45° and upward, pressing with your fingers (DIAGRAM B2). Hold this fold with your finger, bring the strip down in line with the next edge, making a horizontal fold that aligns with the top edge of the quilt (DIAGRAM B3). Start sewing at ¼" of the border, stitching all the layers. Do the same in the four corners of the quilt.

TEMPLATES

