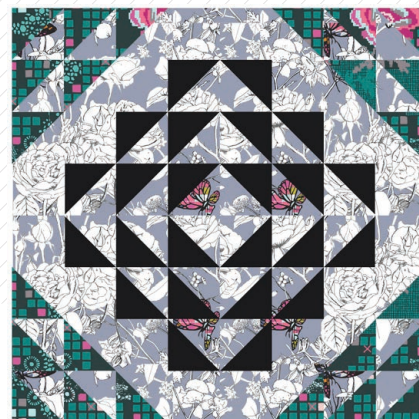


## A square quilted pillow with a complex geometric pattern. The design features a central square of black fabric with diagonal pink stitching, surrounded by a border of light blue fabric with a floral and butterfly pattern. The corners are decorated with teal and black geometric patterns.





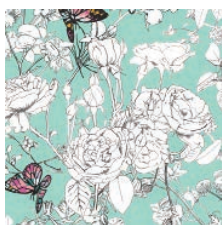
DESIGNED BY AGF STUDIO



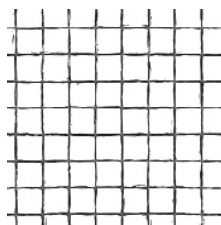
GRID

FABRICS DESIGNED  
BY KATARINA ROCCELLA

ULTRA MIST



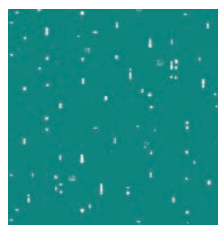
GRI-50400  
PIXELFLY EDEN AQUA



GRI-50401  
GRID POSITIVE



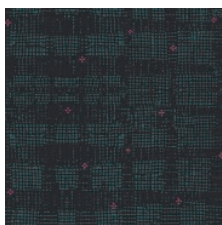
GRI-50402  
WING MAGNIFIED CELESTE



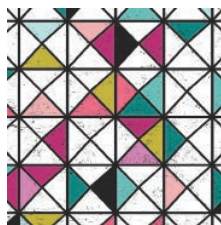
GRI-50403  
IRREGULARITY JADE



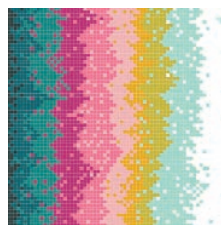
GRI-50404  
FRAMEWORK ALBARISE



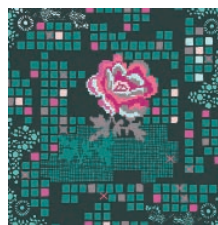
GRI-50405  
EVANESCENCE BLACKOUT



GRI-50407  
VITRINE GEMS



GRI-50408  
LIGHTWAVE IGNITE

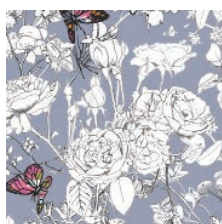


GRI-50409  
ROSE CIRCUIT TEA

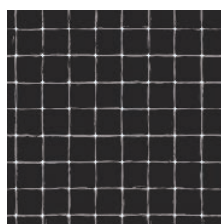


GRI-50411  
IRREGULARITY MAGENTA

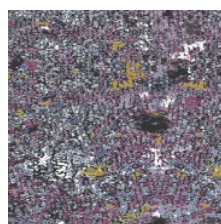
ULTRA VIOLET



GRI-40400  
PIXELFLY EDEN LILAC



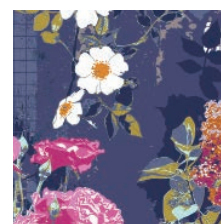
GRI-40401  
GRID NEGATIVE



GRI-40402  
WING MAGNIFIED MAUVE



GRI-40403  
IRREGULARITY CINDER



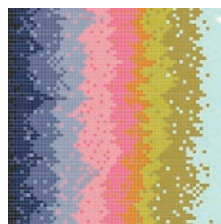
GRI-40404  
FRAMEWORK VIOLET



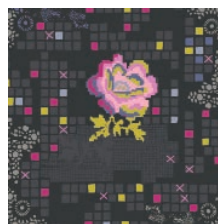
GRI-40405  
EVANESCENCE FLASH



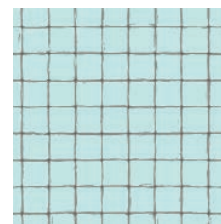
GRI-40406  
PETALBIT TRELLIS AQUA



GRI-40408  
LIGHTWAVE DAMPEN



GRI-40409  
ROSE CIRCUIT JET



GRI-40410  
GRID STATIC



FEEL THE DIFFERENCE © 2019 Courtesy of Art Gallery Quilts LLC. All Rights Reserved.

PE-413  
CAVIAR



Fabric <b>A</b>	GRI-40400	$\frac{3}{4}$ yd
Fabric <b>B</b>	GRI-50409	FQ.
Fabric <b>C</b>	PE-413	FQ.

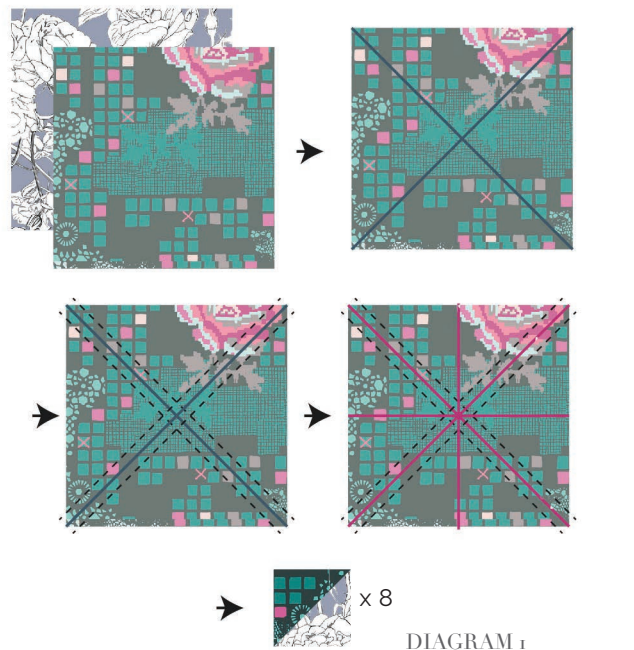
Fabric **A**    GRI-40400 *(Included)*

*1/4" seam allowances are included.  
WOF means width of fabric.*

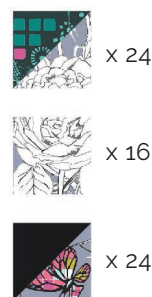
- Six (6)  $5\frac{3}{4}$ " x  $5\frac{3}{4}$ " squares from fabric **A**.
- Sixteen (16)  $2\frac{1}{2}$ " x  $2\frac{1}{2}$ " squares from fabric **A**.
- Two (2) 17" x 11" rectangles from fabric **A**.
- Three (3)  $5\frac{3}{4}$ " x  $5\frac{3}{4}$ " squares from fabric **B** and **C**.

*Sew all rights sides together with ¼" seam allowance.*

- Pair every  $5\frac{3}{4}$ " square from fabrics **B** and **C** with one  $5\frac{3}{4}$ " square from fabric **A**.
- Do the eight at a time technique to get eight half square triangles (HST) from each pair.
- Place the squares face to face
- Draw diagonal lines forming an X.
- Stitch at  $\frac{1}{4}$ " from each side of the drawn lines.
- Trim on the diagonal, vertically and horizontally following the hot pink lines.
- You will get 8 HST from each pair.



- Take Sixteen (16) 2½" x 2½" squares from fabric **A**, and all the HST from the previous step.
- You should have:



- Make the following block four (4) times.





## ASSEMBLING THE TOP

- Join the resulting blocks as follows to finish the pillow top:

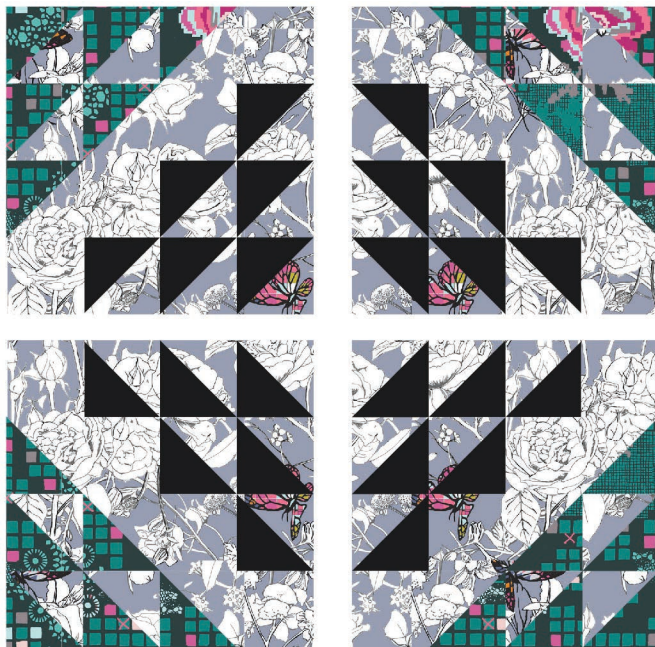


DIAGRAM 4

## QUILT ASSEMBLY

*Sew rights sides together.*

- Place BACKING FABRIC on a large surface wrong side up. Stretch it with masking tape against that surface.
- Place BATTING on top of backing fabric.
- Place TOP on top of the batting with right side facing up. Smooth away wrinkles using your hands.
- Pin all layers together and baste with basting thread, using long stitches. You can also use safety pins to join the layers.
- Machine or hand quilt starting at the center and working towards the corners. Remember that quilting motifs are a matter of personal preference. Have fun choosing yours!
- After you finished, trim excess of any fabric or batting, squaring the quilt to proceed to bind it.

## BACK PILLOW

*Sew rights sides together.*

- Take two (2) 17" x 11" rectangle from fabric A.
- Finish one 17" edge on each rectangle by folding the edge  $\frac{1}{4}$ " twice and then edge-stitching.
- Pin both rectangles to the right side of the pillow top in a way that they overlap in the center of the pillow.
- Stitch all around at  $\frac{1}{4}$ ".



[artgalleryfabrics.com](http://artgalleryfabrics.com)

NOTE: While all possible care has been taken to ensure the accuracy of this pattern, We are not responsible for printing errors or the way in which individual work varies. Please read instructions carefully before starting the construction of this quilt. If desired, wash and iron your fabrics before starting to cut.