

Pixel Wave



X
X
X
X
X
X
X
X
X
X
X
X
X
X
X
X
X



Pixel Wave

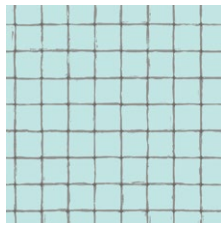
QUILT DESIGNED BY *AGEstudio*



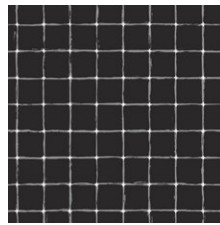
FABRICS DESIGNED BY KATARINA ROCCELLA



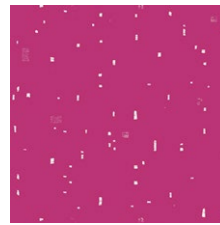
GRI-50404
FRAMEWORK ALBARISE



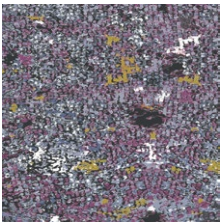
GRI-40410
GRID STATIC



GRI-40401
GRID NEGATIVE



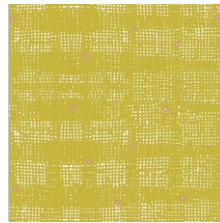
GRI-50411
IRREGULARITY MAGENTA



GRI-40402
WING MAGNIFIED
MAUVE



GRI-40404
FRAMEWORK VIOLET



GRI-40405
EVANESCENCE FLASH

ADDITIONAL BLENDERS FOR THIS PROJECT



PE-446
HONEYDEW



Pixel Wave

FINISHED SIZE | 62½" × 71"

FABRIC REQUIREMENTS

Fabric A	GRI-50404	¾ yd.
Fabric B	GRI-40410	2¾ yd.
Fabric C	PE-446	¾ yd.
Fabric D	GRI-40401	¾ yd.
Fabric E	GRI-50411	1 yd.
Fabric F	GRI-40402	¾ yd.
Fabric G	GRI-40404	¾ yd.
Fabric H	GRI-40405	¾ yd.

BACKING FABRIC

GRI-40401- 5 yds. (*Suggested*)

BINDING FABRIC

GRI-50411 (Fabric **E**) (*Included*)

CUTTING DIRECTIONS

¼" seam allowances are included.
WOF means width of fabric.

- Four (4) 9⅞" squares from fabric **A**.
- Twenty nine (29) 9⅞" squares from fabric **B**.
- One (1) 9½" square from fabric **B**.
- Four (4) 9⅞" squares from fabric **C**.
- Six (6) 9⅞" squares from fabric **D**.
- Five (5) 9⅞" squares from fabric **E**.
- Four (4) 9⅞" squares from fabric **F**.
- Four (4) 9⅞" squares from fabric **G**.
- Four (4) 9⅞" squares from fabric **H**.

CONSTRUCTION

Sew all rights sides together with ¼" seam allowance.

HST method:

- Take two (2) 9⅞" squares.
- Draw a line diagonally corner to corner using a mechanical pencil or frixion pen.
- Stitch ¼" on each side from the drawn lines.
- Cut the pieces apart along the marked diagonal line.
- Press seam open and trim to a 9½" perfect square.

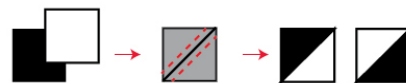


DIAGRAM 1

- Take four (4) 9⅞" squares from fabrics **A** and **B** and create a total of eight (8) HST's. You will be using seven (7).

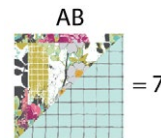


DIAGRAM 2

- Take four (4) 9⅞" squares from fabrics **B** and **C** and create a total of eight (8) HST's.

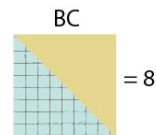


DIAGRAM 3

- Take five (5) 9⅞" squares from fabrics **B** and **D** and create a total of ten (10) HST's. You will be using nine (9).

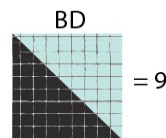


DIAGRAM 4

ASSEMBLING THE TOP

Sew all rights sides together with 1/4" seam allowance. Press open.

- Join one (1) 9 7/8" square from fabrics **D** and **E**.

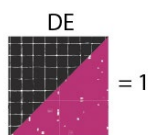


DIAGRAM 5

- Take four (4) 9 7/8" squares from fabrics **B** and **E** and create a total of eight (8) HST's. You will be using seven (7).

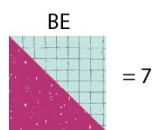


DIAGRAM 6

- Take four (4) 9 7/8" squares from fabrics **B** and **F** and create a total of eight (8) HST's. You will be using seven (7).

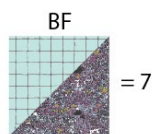


DIAGRAM 7

- Take four (4) 9 7/8" squares from fabrics **B** and **G** and create a total of eight (8) HST's.

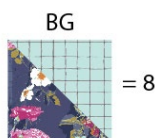


DIAGRAM 8

- Take four (4) 9 7/8" squares from fabric **B** and **G** and create a total of eight (8) HST's.

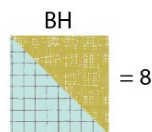


DIAGRAM 9

- Take all of the half square triangles and one (1) 9 1/2" square from fabric **B** and follow the diagram below for each row assembly.

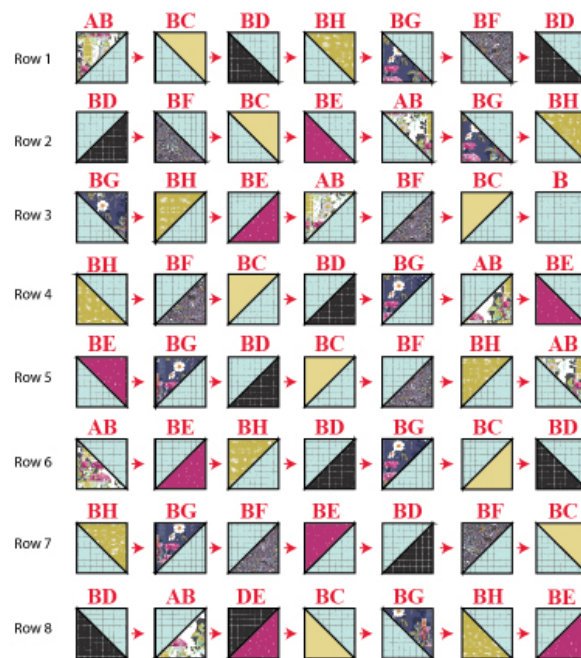


DIAGRAM 10

- Join rows 1-8.

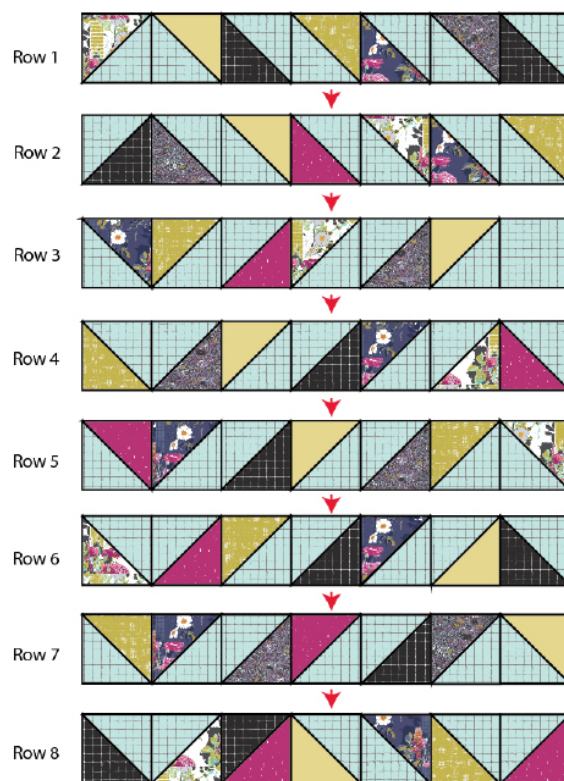


DIAGRAM 11

QUILT ASSEMBLY

Sew rights sides together.

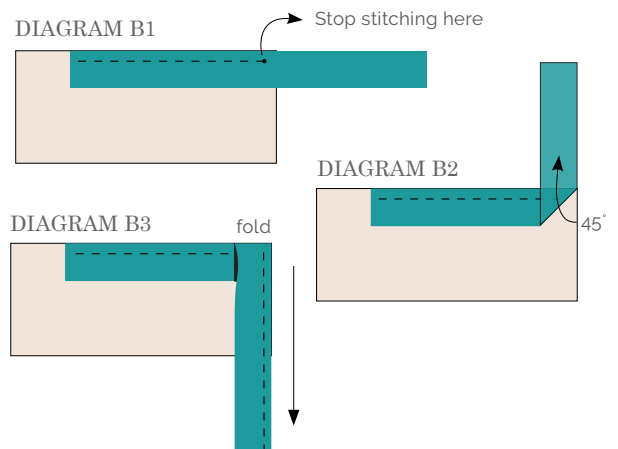
- Place BACKING FABRIC on a large surface wrong side up. Stretch it with masking tape against that surface.
- Place BATTING on top of backing fabric.
- Place TOP on top of the batting with right side facing up. Smooth away wrinkles using your hands.
- Pin all layers together and baste with basting thread, using long stitches. You can also use safety pins to join the layers.
- Machine or hand quilt starting at the center and working towards the corners. Remember that quilting motifs are a matter of personal preference. Have fun choosing yours!
- After you finished, trim excess of any fabric or batting, squaring the quilt to proceed to bind it.

- Stop stitching before you reach the last 5 or 6 inches. Cut the threads and remove the quilt from under the machine presser foot. Lay the loose ends of the binding flat along the quilt edge, folding the ends back on themselves where they meet. Press them together to form a crease. Using this crease as the stitching line, sew the two open ends of the binding with right sides together (you can help yourself marking with a pencil if the crease is difficult to see).
- Trim seam to ¼" and press open. Complete the sewing. Turn binding to back of the quilt, turn raw edge inside and stitch by hand using blind stitch.

BINDING

Sew rights sides together.

- Cut enough strips 1½" wide by the width of the fabric **E** to make a final strip 277" long. Start sewing the binding strip in the middle of one of the sides of the quilt, placing the strip right side down and leaving an approximated 5" tail. Sew with ¼" seam allowance (using straight stitch), aligning the strip's raw edge with the quilt top's raw edge.
- Stop stitching ¼" before the edge of the quilt (DIAGRAM B 1). Clip the threads. Remove the quilt from under the machine presser foot. Fold the strip in a motion of 45° and upward, pressing with your fingers (DIAGRAM B2). Hold this fold with your finger, bring the strip down in line with the next edge, making a horizontal fold that aligns with the top edge of the quilt (DIAGRAM B3). Start sewing at ¼" of the border, stitching all the layers. Do the same in the four corners of the quilt.



Congratulations & enjoy

XXXXXXXXXXXXXXXXXXXXXXXXXXXXXXXX



artgalleryfabrics.com

NOTE: While all possible care has been taken to ensure the accuracy of this pattern, We are not responsible for printing errors or the way in which individual work varies.

Please read instructions carefully before starting the construction of this quilt. If desired, wash and iron your fabrics before starting to cut.

© 2021 Courtesy of Art Gallery Quilts LLC. All Rights Reserved.