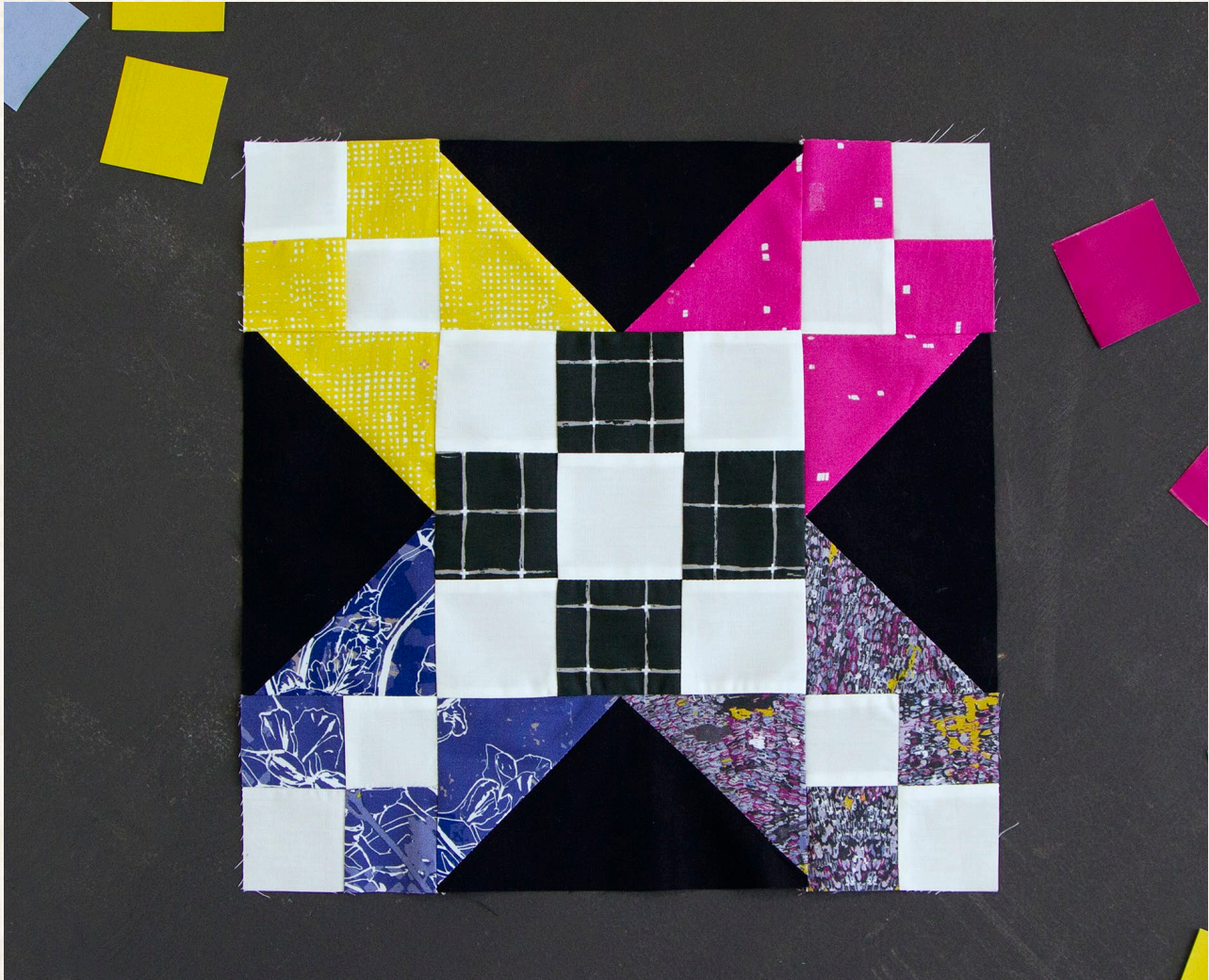


x
x
x
x
x
x
x
x
x
x
x
x



Quilt
BLOCK
collection

Pixel Pieces Block



FREE PATTERN

x x



GRID

FABRICS DESIGNED
BY *Katarina Rocella*



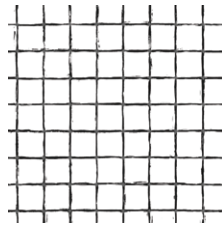
Quilt BLOCK collection

For More Block Tutorials :
<http://bit.ly/AGFquiltblockcollectionplaylist>

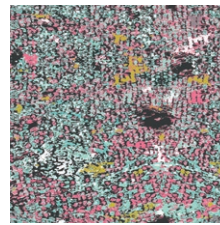
ULTRA MIST



GRI-50400
PIXELFLY EDEN AQUA



GRI-50401
GRID POSITIVE



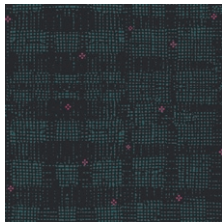
GRI-50402
WING MAGNIFIED CELESTE



GRI-50403
IRREGULARITY JADE



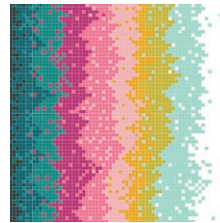
GRI-50404
FRAMEWORK ALBARISE



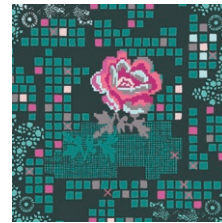
GRI-50405
EVANESCENCE BLACKOUT



GRI-50407
VITRINE GEMS



GRI-50408
LIGHTWAVE IGNITE



GRI-50409
ROSE CIRCUIT TEA

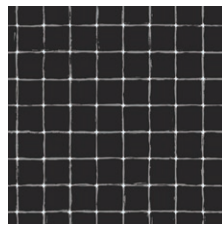


GRI-50411
IRREGULARITY MAGENTA

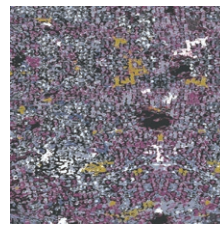
ULTRA VIOLET



GRI-40400
PIXELFLY EDEN LILAC



GRI-40401
GRID NEGATIVE



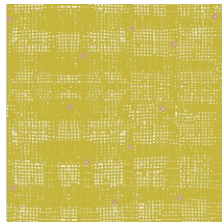
GRI-40402
WING MAGNIFIED MAUVE



GRI-40403
IRREGULARITY CINDER



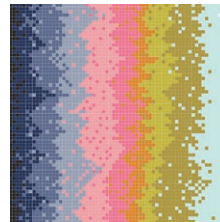
GRI-40404
FRAMEWORK VIOLET



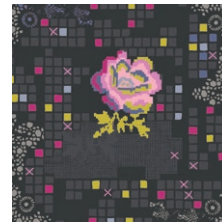
GRI-40405
EVANESCENCE FLASH



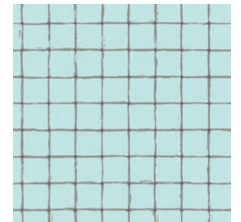
GRI-40406
PETALBIT TRELLIS AQUA



GRI-40408
LIGHTWAVE DAMPEN



GRI-40409
ROSE CIRCUIT JET



GRI-40410
GRID STATIC



PE-413
CAVIAR



PE-433
SNOW

FINISHED SIZE | 12' x 12'

FABRIC REQUIREMENTS

| | |
|-----------------|-----------|
| Fabric A | GRI-40401 |
| Fabric B | GRI-50411 |
| Fabric C | GRI-40402 |
| Fabric D | GRI-40404 |
| Fabric E | GRI-40405 |
| Fabric F | PE-413 |
| Fabric G | PE-433 |

CUTTING DIRECTIONS

1/4" seam allowances are included.

- Four (4) 2 1/2" squares from Fabric **A**
- Two (2) 3 1/2" squares from Fabric **B,C,D,** and **E**
- Two (2) 2" squares from Fabric **B, C,D,** and **E**
- Four (4) 3 1/2" x 6 1/2" rectangle from Fabric **F**
- Five (5) 2 1/2" squares from Fabric **G**
- Eight (8) 2" squares from Fabric **G**

BLOCK CONSTRUCTION

Sew all rights sides together with 1/4" seam allowance.

- Take four 2 1/2" squares from Fabric **A** and five from Fabric **G** and sew together to create a 9 patch block as follows.

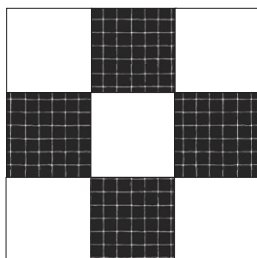


DIAGRAM 1

XX

- Now we need to create four 4 patch blocks from fabrics **B,C,D,E,** and **G.**
- Place your four 2" squares out in front of you alternating colors as follows.



DIAGRAM 2

- To create your flying geese, draw diagonal lines on the wrong side of all your 3 1/2" squares from fabric **B,C,D,**and **E.**
- Place one of the squares right sides together on each end of a 3 1/2" x 6 1/2" rectangle from Fabric **F.**
- Sew on the line you drew and trim your seam allowance to 1/4". Repeat this same process with your other 3 1/2" squares placing the proper print on each end of your strip as follows.

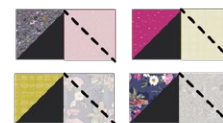
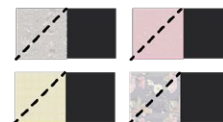


DIAGRAM 3

- Place your pieces out following the block design and sew your block into rows.
- Sew your rows together making sure your seams are pressed in alternating directions.

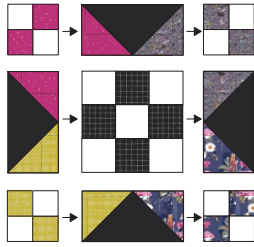


DIAGRAM 4

*Congratulations
& enjoy*



artgalleryfabrics.com

NOTE: While all possible care has been taken to ensure the accuracy of this pattern, We are not responsible for printing errors or the way in which individual work varies. Please read instructions carefully before starting the construction of this quilt. If desired, wash and iron your fabrics before starting to cut.