



directional



FREE PATTERN





QUILT DESIGNED BY AGF STUDIO



GRID

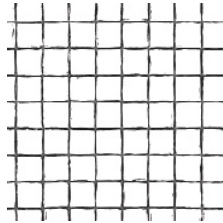
Katarina Roccella

FABRICS DESIGNED BY KATARINA ROCCELLA

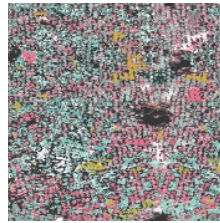
ULTRA MIST



GRI-50400
PIXELFLY EDEN AQUA



GRI-50401
GRID POSITIVE



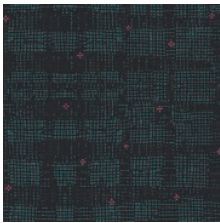
GRI-50402
WING MAGNIFIED CELESTE



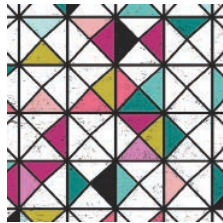
GRI-50403
IRREGULARITY JADE



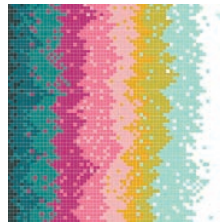
GRI-50404
FRAMEWORK ALBARISE



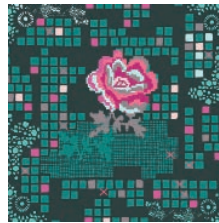
GRI-50405
EVANESCENCE BLACKOUT



GRI-50407
VITRINE GEMS



GRI-50408
LIGHTWAVE IGNITE



GRI-50409
ROSE CIRCUIT TEA

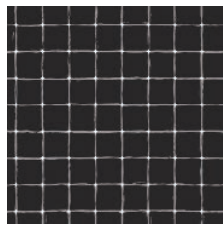


GRI-50411
IRREGULARITY MAGENTA

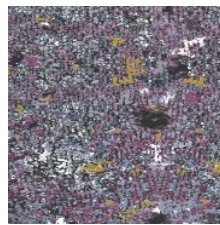
ULTRA VIOLET



GRI-40400
PIXELFLY EDEN LILAC



GRI-40401
GRID NEGATIVE



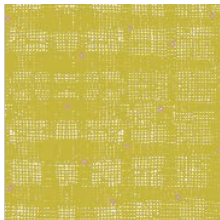
GRI-40402
WING MAGNIFIED MAUVE



GRI-40403
IRREGULARITY CINDER



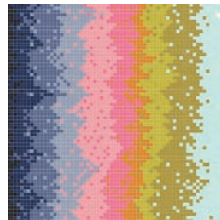
GRI-40404
FRAMEWORK VIOLET



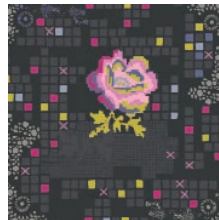
GRI-40405
EVANESCENCE FLASH



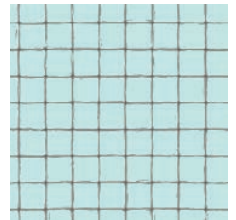
GRI-40406
PETALBIT TRELLIS AQUA



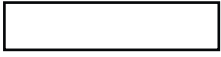
GRI-40408
LIGHTWAVE DAMPEN



GRI-40409
ROSE CIRCUIT JET



GRI-40410
GRID STATIC



PE-433
SNOW

directional

FINISHED SIZE | 36" x 14"

FABRIC REQUIREMENTS

Fabric A GRI-50408 $\frac{3}{4}$ yd.
 Fabric B GRI-50405 $\frac{1}{3}$ yd.
 Fabric C PE-433 $\frac{1}{3}$ yd.

BACKING FABRIC

Fabric A GRI-50408 *(Included)*

CUTTING DIRECTIONS

$\frac{1}{4}$ " seam allowances are included.
 WOF means width of fabric.

- One (1) 36½" x 7½" rectangle from fabric A.
- One (1) 34½" x 14½" rectangle from fabric A.
- One (1) 4½" x 14½" rectangle from fabric A.
- Thirty Six (36) 2⅞" x 2⅞" squares from fabric B.
- Nine (9) 5¼" x 5¼" squares from fabric C.

CONSTRUCTION

Sew all rights sides together with ¼" seam allowance.

- Take all the squares from fabric B and C, and using the four at time flying geese technique, make thirty six flying geese:
- Pair one (1) square from fabric C with four (4) squares from fabric B.
- Place two (2) squares from fabric B on the diagonal and face to face with the square from fabric C.
- Draw a diagonal line and stitch at ¼" from each side of the line.

x x

- Cut on the line you drew and press open.
- Take the other two (2) squares from fabric B, and place them face to face with the uncut corners from fabric C.
- Draw a diagonal line following the Diagram 1, and stitch at ¼".
- Trim on the drawn lines, press open and trim the dog ears.
- Repeat nine (9) more times until you get thirty six (36) flying geese.

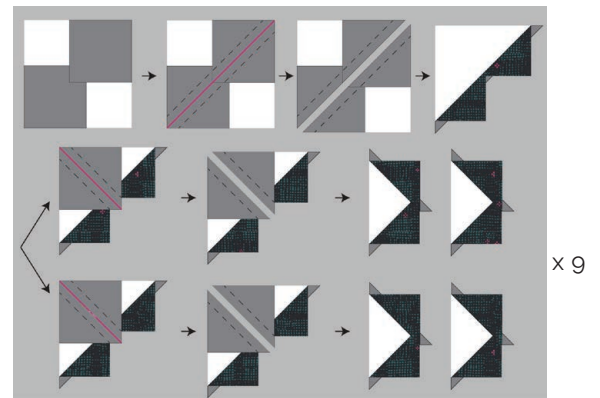


DIAGRAM 1

- Make two (2) rows of eighteen (18) flying geese:



x 2

DIAGRAM 2

- Take one (1) 36½" x 7½" rectangle from fabric A and sub-cut it in three (3) 36½" x 2½" strips.

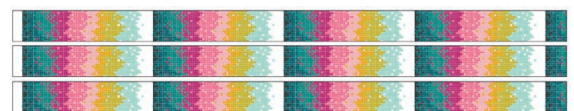


DIAGRAM 3

ASSEMBLING THE TOP

Sew all rights sides together with 1/4" seam allowance. Press open.

- Take the two flying geese strips and join them following the diagram.
- Make sure the print from fabric A is aligned to the three pieces when joining the pillow top.

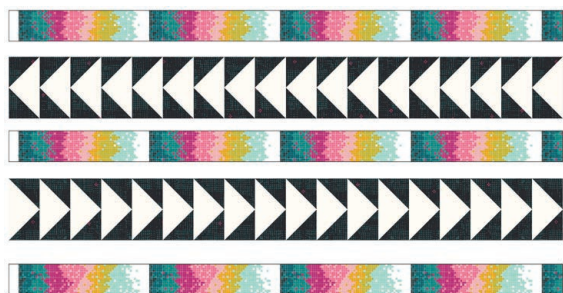


DIAGRAM 4

QUILT ASSEMBLY

Sew rights sides together.

- Place BACKING FABRIC on a large surface wrong side up. Stretch it with masking tape against that surface.
- Place BATTING on top of backing fabric.
- Place TOP on top of the batting with right side facing up. Smooth away wrinkles using your hands.
- Pin all layers together and baste with basting thread, using long stitches. You can also use safety pins to join the layers.
- Machine or hand quilt starting at the center and working towards the corners. Remember that quilting motifs are a matter of personal preference. Have fun choosing yours!
- After you finished, trim excess of any fabric or batting, squaring the quilt to proceed to bind it.

BACK PILLOW

Sew rights sides together.

- Take one (1) 34 1/2" x 14 1/2" rectangle from fabric A and one (1) 4 1/2" x 14 1/2" rectangle from fabric A.
- Finish one 14 1/2" edge on each rectangle by folding the edge 1/4" twice and then edge-stitching.
- Pin both rectangles to the right side of the pillow top in a way that they overlap.
- Stitch all around at 1/4".
- Turn your pillow top to the right side.



artgalleryfabrics.com

NOTE: While all possible care has been taken to ensure the accuracy of this pattern, We are not responsible for printing errors or the way in which individual work varies. Please read instructions carefully before starting the construction of this quilt. If desired, wash and iron your fabrics before starting to cut.