

X
X
X
X
X
X
X
X
X
X
X
X
X
X
X

CIRCUIT



FREE PATTERN

XXXXXXXXXXXXXXXXXXXXXXXXXXXXXXXXXXXX



CIRCUIT

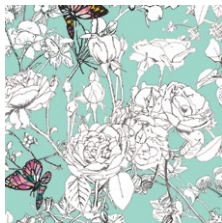
DESIGNED BY AGF



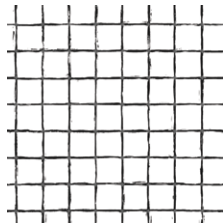
GRID

FABRICS DESIGNED
BY KATARINA ROCCELLA

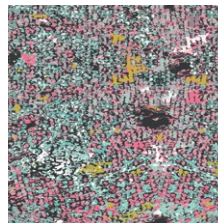
ULTRA MIST



GRI-50400
PIXELFLY EDEN AQUA



GRI-50401
GRID POSITIVE



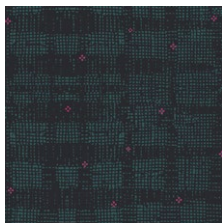
GRI-50402
WING MAGNIFIED CELESTE



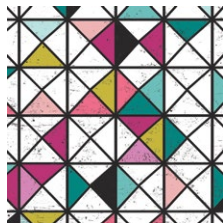
GRI-50403
IRREGULARITY JADE



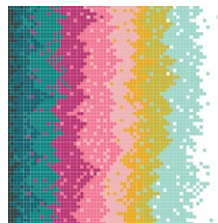
GRI-50404
FRAMEWORK ALBARISE



GRI-50405
EVANESCENCE BLACKOUT



GRI-50407
VITRINE GEMS



GRI-50408
LIGHTWAVE IGNITE



GRI-50409
ROSE CIRCUIT TEA

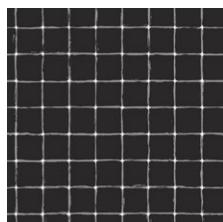


GRI-50411
IRREGULARITY MAGENTA

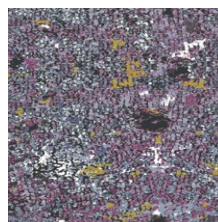
ULTRA VIOLET



GRI-40400
PIXELFLY EDEN LILAC



GRI-40401
GRID NEGATIVE



GRI-40402
WING MAGNIFIED MAUVE



GRI-40403
IRREGULARITY CINDER



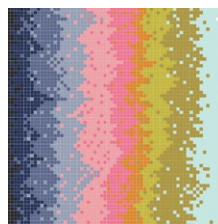
GRI-40404
FRAMEWORK VIOLET



GRI-40405
EVANESCENCE FLASH



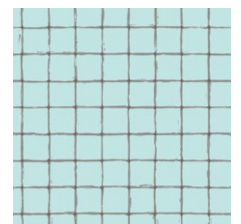
GRI-40406
PETALBIT TRELLIS AQUA



GRI-40408
LIGHTWAVE DAMPEN



GRI-40409
ROSE CIRCUIT JET



GRI-40410
GRID STATIC



CIRCUIT

FINISHED SIZE | 37" x 13"

FABRIC REQUIREMENTS

Fabric A	GRI-50405	1¼ yd
Fabric B	GRI-50400	7⁄8 yd.
Fabric C	GRI-50408	¼ yd.

CUTTING DIRECTIONS

¼" seam allowances are included.
WOF means width of fabric.

Fabric A:

- Cut Five (5) WOF x 2½"
- Sub cut Seventy Six (76) 2 ½" x 2 ½" Squares.
- Cut Five (5) WOF x 2 7⁄8"
- Cut Seventy two (72) 2 7⁄8" x 2 7⁄8" Squares.

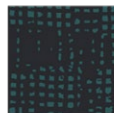
Fabric B:

- Cut Thirteen (13) WOF x 2½"
- Sub cut One Hundred and sixteen (116) 2 ½" x 2 ½" Squares.
- Cut Five (5) WOF x 2 7⁄8"
- Sub cut Seventy two (72) 2 7⁄8" x 2 7⁄8" Squares.

CONSTRUCTION

Sew all rights sides together with ¼" seam allowance.

This Table Runner is made out of two Blocks which we will call **Block X** and **Block Y**
Each Block is made out HST (Half Square Triangles) and squares.



76 squares of Fabric A



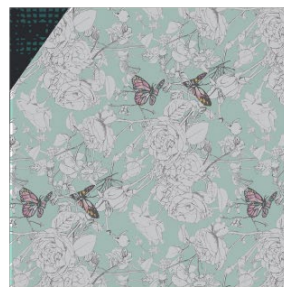
116 squares of Fabric B



144 HST

DIAGRAM 1

Half Square Triangle Method



Place the One(1) 2 7⁄8 x 2 7⁄8 squares from Fabric A and B right side together and mark a diagonal line on the wrong side of each square



Sew a 1⁄4 on both sides of the marked diagonal line



Using a rotary blade cut the square into two triangles

DIAGRAM 2

Block X:

- Follow diagram below for squares and HST arrangement (Repeat this step one more time)

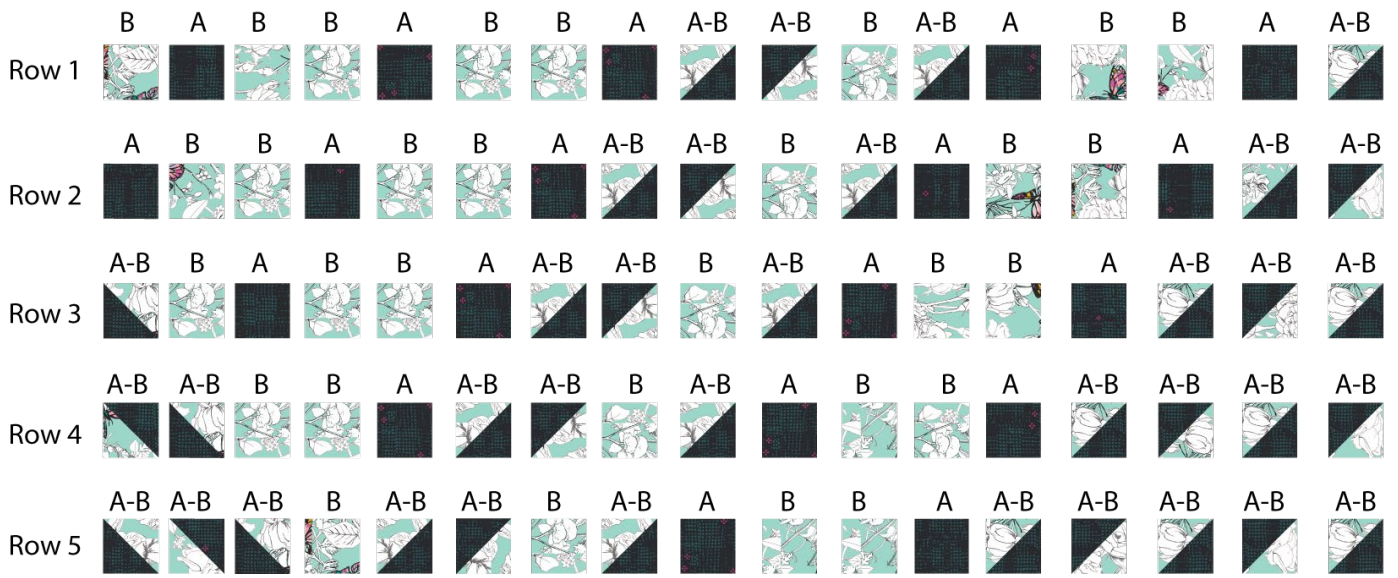


DIAGRAM 3

- Sew Rows together

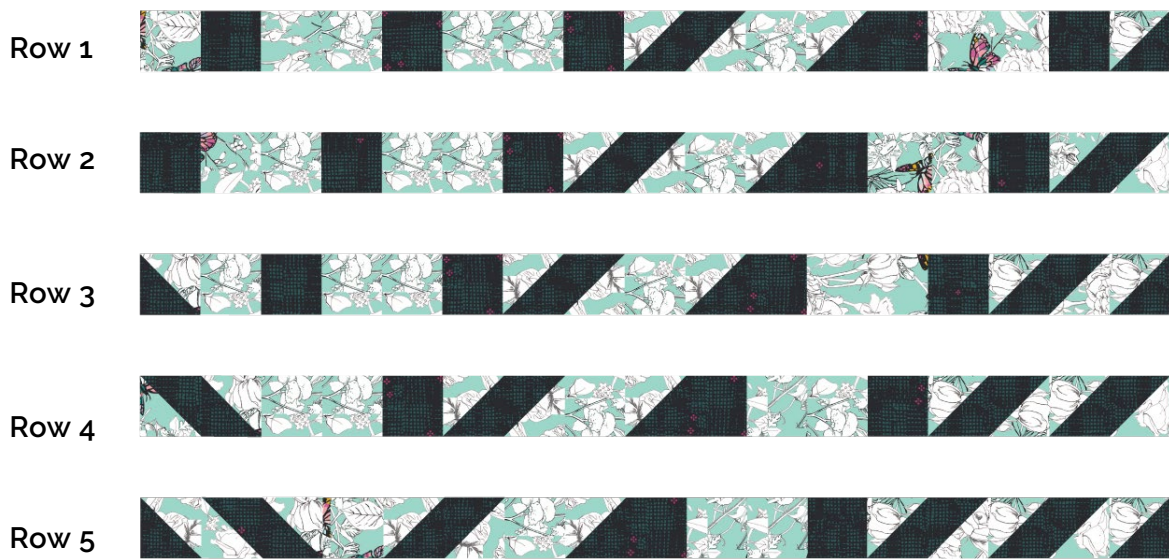


DIAGRAM 4

- This is how Block X will look, you should have two of these blocks:

Block X



DIAGRAM 5

Block Y:

Follow diagram below for squares and HST arrangement (Repeat this step one more time)

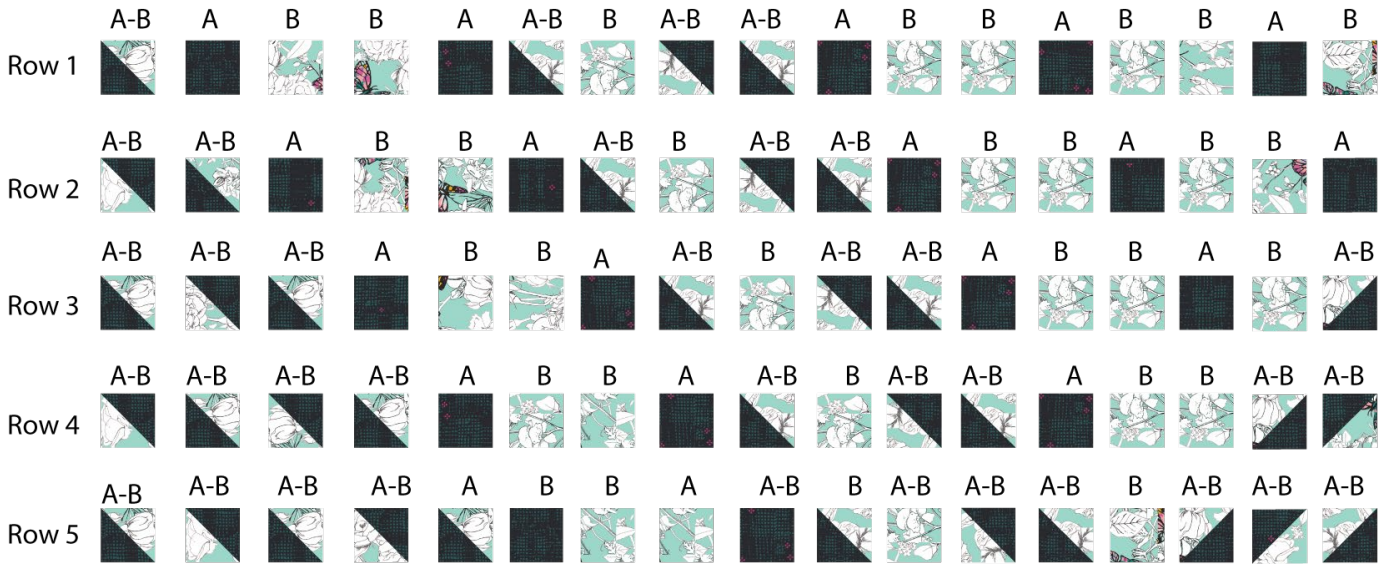


DIAGRAM 6

- Sew rows together



- This is how Block Y will look.. You should have two of these blocks :

Block Y



- We should have two (2) Blocks X and Two Blocks Y.
- Sew Block X and Y as shown on diagram below
- Sew Block Y and X as shown on diagram below

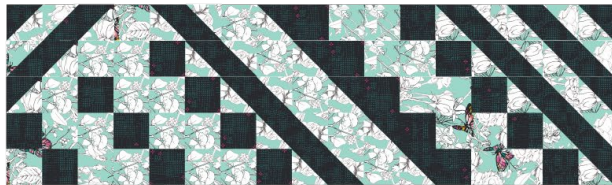
Bloc X



Bloc Y



Bloc Y



Bloc X



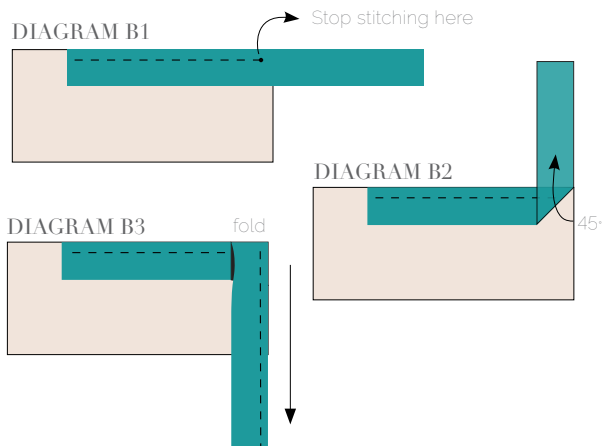
- Sew as shown on Diagram below.



BINDING

Sew rights sides together.

- Cut enough strips $1\frac{1}{2}$ " wide by the width of the fabric C to make a final strip 187" long. Start sewing the binding strip in the middle of one of the sides of the quilt, placing the strip right side down and leaving an approximated 5" tail. Sew with $\frac{1}{4}$ " seam allowance (using straight stitch), aligning the strip's raw edge with the quilt top's raw edge.
- Stop stitching $\frac{1}{4}$ " before the edge of the quilt (DIAGRAM B 1). Clip the threads. Remove the quilt from under the machine presser foot. Fold the strip in a motion of 45° and upward, pressing with your fingers (DIAGRAM B2). Hold this fold with your finger, bring the strip down in line with the next edge, making a horizontal fold that aligns with the top edge of the quilt (DIAGRAM B3). Start sewing at $\frac{1}{4}$ " of the border, stitching all the layers. Do the same in the four corners of the quilt.
- Stop stitching before you reach the last 5 or 6 inches. Cut the threads and remove the quilt from under the machine presser foot. Lay the loose ends of the binding flat along the quilt edge, folding the ends back on themselves where they meet. Press them together to form a crease. Using this crease as the stitching line, sew the two open ends of the binding with right sides together (you can help yourself marking with a pencil if the crease is difficult to see).
- Trim seam to $\frac{1}{4}$ " and press open. Complete the sewing. Turn binding to back of the quilt, turn raw edge inside and stitch by hand using blind stitch.



artgalleryfabrics.com

NOTE: While all possible care has been taken to ensure the accuracy of this pattern, We are not responsible for printing errors or the way in which individual work varies. Please read instructions carefully before starting the construction of this quilt. If desired, wash and iron your fabrics before starting to cut.

© 2018 Courtesy of Art Gallery Quilts LLC. All Rights Reserved.