

CROSSETTE



LEGENDARY

FABRICS DESIGNED BY PAT BRAVO

BOHO SOUL



LGD-49700
STITCHED ANTHOMANIA BOHO



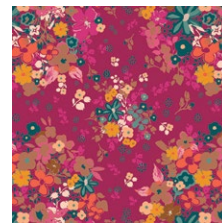
LGD-49701
MARQUETERIE BOHO



LGD-49702
WONDERLUST BOHO



LGD-49703
BRIT BOUTIQUE BOHO



LGD-49704
FEMME METALE BOHO



LGD-49705
MEADOW BOHO



LGD-49706
COLLAR ENDS BOHO



LGD-49707
COLLAR ENDS SOUL



LGD-49708
TRINKETS BOHO



LGD-49709
TRINKETS SOUL

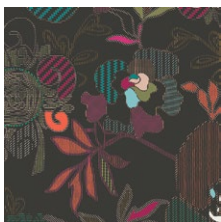


LGD-49710
FLECKS BOHO



LGD-49711
FLECKS SOUL

BOLD DREAMS



LGD-39700
STITCHED ANTHOMANIA BOLD



LGD-39701
MARQUETERIE BOLD



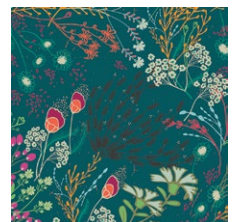
LGD-39702
WONDERLUST BOLD



LGD-39703
BRIT BOUTIQUE BOLD



LGD-39704
FEMME METALE BOLD



LGD-39705
MEADOW BOLD



LGD-39706
COLLAR ENDS BOLD



LGD-39707
COLLAR ENDS DREAMS



LGD-39708
TRINKETS BOLD



LGD-39709
TRINKETS DREAMS



LGD-39710
FLECKS BOLD



LGD-39711
FLECKS DREAMS



- Cut the squares diagonally corner to corner

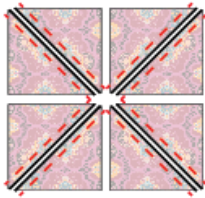


DIAGRAM 4

- Trim each HST to $4\frac{1}{2}$ " x $4\frac{1}{2}$ " square. You will have a total of (8) HST



DIAGRAM 5

- Repeat the same Magic 8 instructions for the following Fabrics:

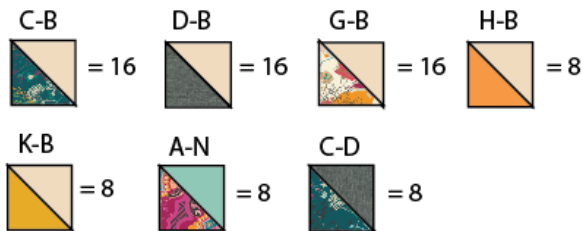


DIAGRAM 6

HST method:

- Pair the following $4\frac{7}{8}$ " x $4\frac{7}{8}$ " Fabric squares in order to create the HST.
- This HST are directional Fabric so follow the Quilt Diagram in order to have the fabric direction accordingly below you will see the direction for each HST

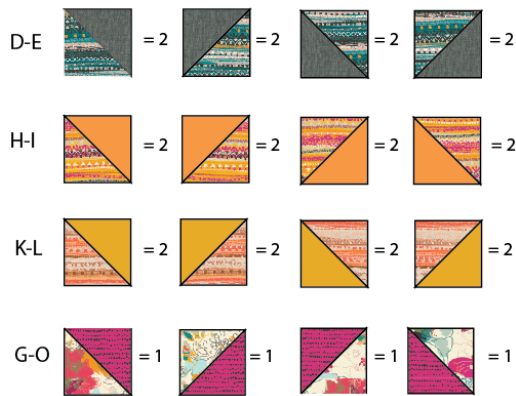


DIAGRAM 7

- Pair (2) $16\frac{7}{8}$ " x $16\frac{7}{8}$ " square from Fabric **A-B**



DIAGRAM 8

Flying Geese Method:

- Follow the diagram below for the Flying Geese method assembly by taking (1) $8\frac{1}{2}$ " x $4\frac{1}{2}$ " rectangle and (2) $4\frac{1}{2}$ " x $4\frac{1}{2}$ " square of the following fabric pieces:

