

The image displays three distinct geometric wall hangings, likely traditional Indian textiles, arranged against a plain, light-colored background. Each hanging is suspended by a thin, light-colored cord that forms a triangular shape at the top. The central hanging is the largest and features a dark blue background with two large, light blue diamond shapes. Each diamond contains a smaller, multi-colored diamond with a floral pattern. The left hanging is rectangular with a red border and a central panel of horizontal stripes in red, yellow, and green, interspersed with small, colorful diamond motifs. The right hanging is rectangular with a red border and a central panel of horizontal stripes in red, yellow, and green, interspersed with small, colorful diamond motifs.

Allegra Wall Art



LEGENDARY

FABRICS DESIGNED BY PAT BRAVO

BOHO SOUL



LGD-49700
STITCHED ANTHOMANIA BOHO



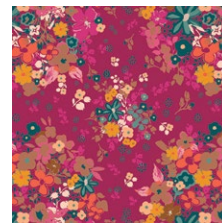
LGD-49701
MARQUETERIE BOHO



LGD-49702
WONDERLUST BOHO



LGD-49703
BRIT BOUTIQUE BOHO



LGD-49704
FEMME METALE BOHO



LGD-49705
MEADOW BOHO



LGD-49706
COLLAR ENDS BOHO



LGD-49707
COLLAR ENDS SOUL



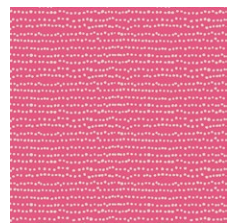
LGD-49708
TRINKETS BOHO



LGD-49709
TRINKETS SOUL

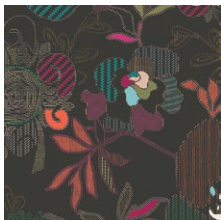


LGD-49710
FLECKS BOHO



LGD-49711
FLECKS SOUL

BOLD DREAMS



LGD-39700
STITCHED ANTHOMANIA BOLD



LGD-39701
MARQUETERIE BOLD



LGD-39702
WONDERLUST BOLD



LGD-39703
BRIT BOUTIQUE BOLD



LGD-39704
FEMME METALE BOLD



LGD-39705
MEADOW BOLD



LGD-39706
COLLAR ENDS BOLD



LGD-39707
COLLAR ENDS DREAMS



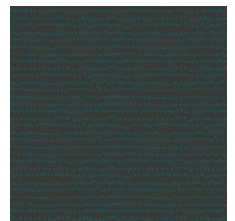
LGD-39708
TRINKETS BOLD



LGD-39709
TRINKETS DREAMS



LGD-39710
FLECKS BOLD



LGD-39711
FLECKS DREAMS



FEEL THE DIFFERENCE © 2018 Courtesy of Art Gallery Quilts LLC. All Rights Reserved.

Allegra Wall Art

FINISHED SIZE | 10" x 18",
17" x 34", 11½" x 18½"

FABRIC REQUIREMENTS

Fabric A	LGD-39711	7⁄8 yd.
Fabric B	PE-460	3⁄8 yd.
Fabric C	LGD-39710	½ yd.
Fabric D	LGD-39708	⅓ yd.
Fabric E	PE-418	½ yd.
Fabric F	LGD-39704	1⁄6 yd.
Fabric G	LGD-49710	½ yd.
Fabric H	PE-429	⅓ yd.

BACKING FABRIC

Wall Decor #1: Fabric **B** - 1yd

Wall Decor #2: Fabric **H** - FQ

Wall Decor #3: Fabric **E** - FQ

BINDING FABRIC

Wall Decor #1: Fabric **E** - (Included)

Wall Decor #2: Fabric **B** - (Included)

Wall Decor #3: Fabric **C** - (Included)

CUTTING DIRECTIONS

¼" seam allowances are included.
WOF means width of fabric.

Wall Decor #1: 17" x 34"

- Eight (8) 9" x 9" square from Fabric **A**
- Four (4) 10½" x 1½" strip from Fabric **B**
- Four (4) 1½" x 12½" strip from Fabric **B**
- Four (4) 8½" x 1½" strip from Fabric **C**
- Four (4) 1½" x 10½" strip from Fabric **C**

- Four (4) 1½" x 6½" strip from Fabric **D**
- Four (4) 1½" x 8½" strip from Fabric **D**
- Four (4) 4½" x 1½" strip from Fabric **E**
- Four (4) 1½" x 6½" strip from Fabric **E**
- Two (2) 4½" x 4½" square from Fabric **F**

Wall Decor #2: 11½" x 18½"

- One (1) 12" x 2" strip from Fabric **C**
- Twenty Four (24) 3⅜" x 3⅜" squares from Fabric **C**
- Twelve (12) 2½" x 1" strip from Fabric **E**
- Twelve (12) 1" x 3½" strip from Fabric **E**
- Eight (8) 3½" x 1" strip from Fabric **B**
- Eight (8) 1" x 4½" strip from Fabric **B**
- Four (4) 3½" x 1½" strip from Fabric **H**
- Four (4) 1½" x 4½" strip from Fabric **H**
- Six (6) 2½" x 2½" square from Fabric **D** (Cut On Point)

Wall Decor #3: 10" x 18"

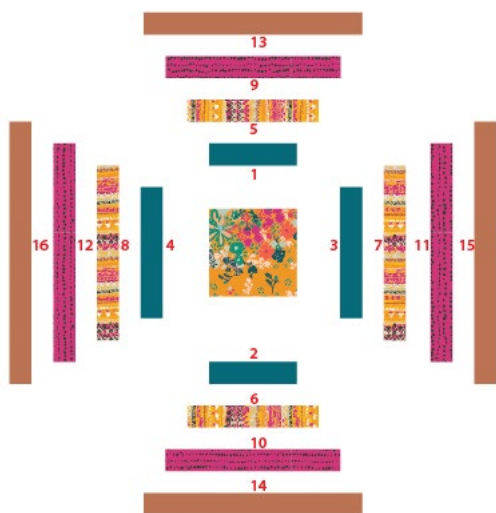
- Two (2) 10½" x 2½" strip from Fabric **G**
- Two (2) 2½" x 14½" strip from Fabric **G**
- Two (2) 6½" x 1½" strip from Fabrics **D, F, E**
- Six (6) 6½" x 1½" strip from Fabric **C**
- Four (4) 2½" x 1½" rectangle from Fabric **D**
- Eight (8) 1½" x 1½" square from Fabric **G**
- One (1) 2½" x 2½" square from Fabric **G**

CONSTRUCTION

*Sew all rights sides together with $\frac{1}{4}$ " seam allowance.
HST means Half Square Triangles.*

Wall Decor #1: 17" x 34"

- Follow the order of the Diagram below for the Log Cabin Construction
- Repeat the same instruction in order to assemble the same log cabin, having a total of (2).



Total of (2)



DIAGRAM 1

- Take (1) 9" x 9" square from Fabric **A** and (1) log cabin piece (on point)
- Place Fabric **A** square wrong sides facing making sure the fabric print is in a vertical direction.
- Sew at the diagonal.

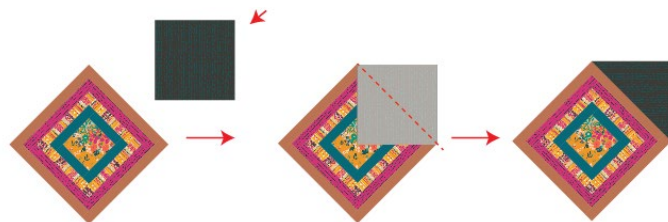


DIAGRAM 2

- Repeat the same process for the other side

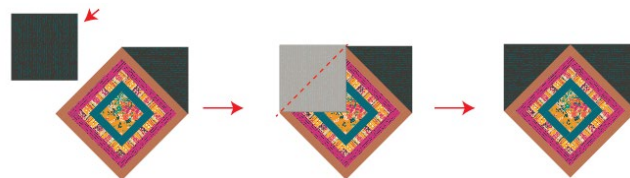


DIAGRAM 3

- Now, repeat the same assembling process for the bottom parts but change the direction of the Fabric **A** fabric print to horizontal direction

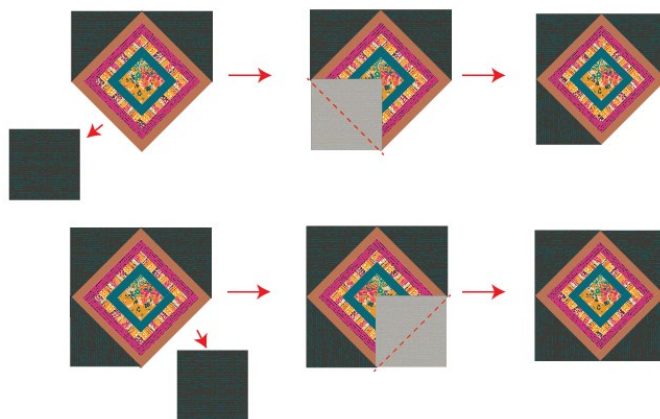


DIAGRAM 4

- Repeat the same assembling process for the other Log Cabin Piece

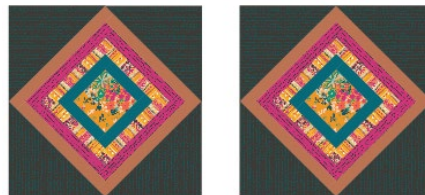
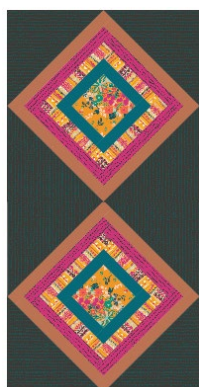


DIAGRAM 5

- Now, pair them as Diagram below.
- Quilt as desired, place the Binging, following the binding assembly instructions and then, use your preferred method for hanging the wall decor



Wall Decor #2: 11½" x 18½"

- Follow the order of the Diagram below for the Log Cabin Construction for Fabric **D, E, B**
- Repeat the same instruction in order to assemble the same log cabin, having a total of (4).

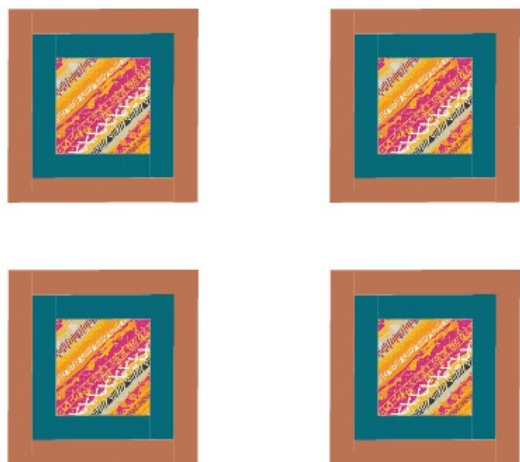
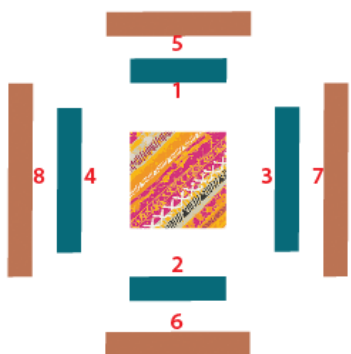


DIAGRAM 6

- Follow the order of the Diagram below for the Log Cabin Construction for Fabric **D, E, H**
- Repeat the same instruction in order to assemble the same log cabin, having a total of (2).

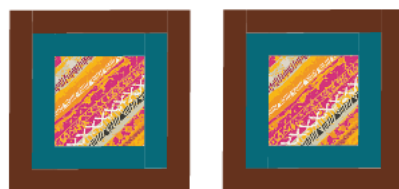


DIAGRAM 7

- Take (1) 3⅝" x 3⅝" square from Fabric **C** and (1) log cabin piece (on point)
- Place Fabric **C** square wrong sides facing making sure the fabric print is in a horizontal direction.
- Sew at the diagonal.

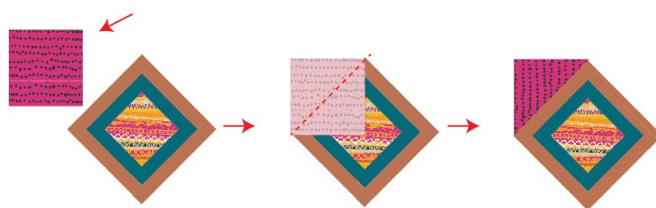


DIAGRAM 8

- Repeat the same process for the other side but this time rotate your square, having the print in a vertical direction

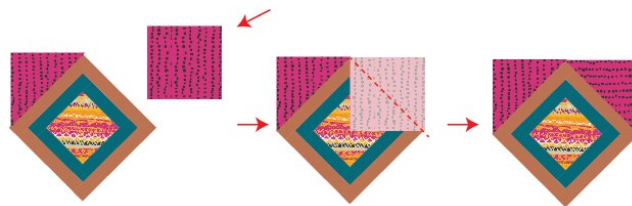


DIAGRAM 9

- Repeat the same process for the other side but this time rotate your square, having the print in a horizontal direction

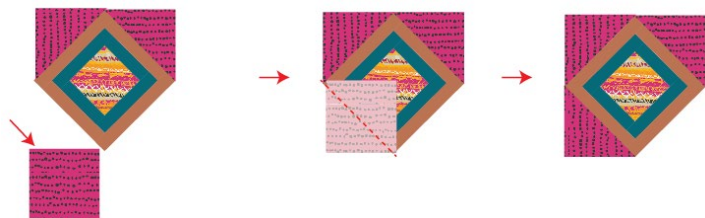


DIAGRAM 10

- Repeat the same process for the other side but this time rotate your square, having the print in a vertical direction

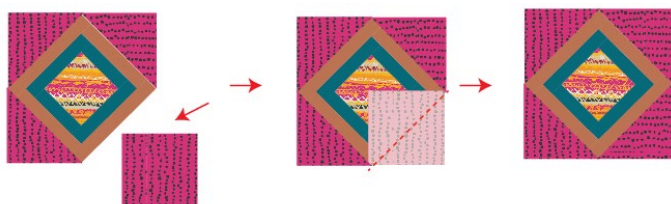


DIAGRAM 11

- Repeat the same assembling instructions for all of the Log Cabin Pieces, assembling (3) with the vertical print direction on the left and (3) with the horizontal print direction on the left



DIAGRAM 12

- Now, pair each block as in the Diagram below
- Then pair each Row

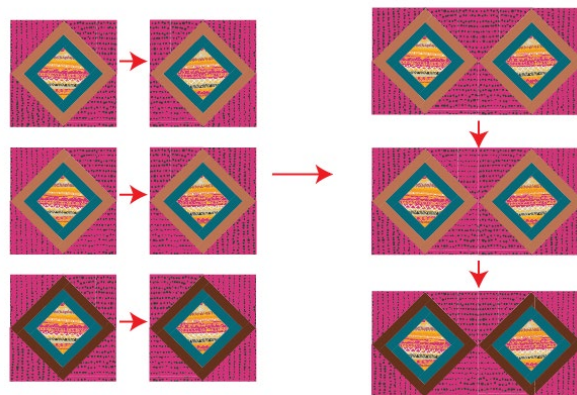


DIAGRAM 13

- Take the 12" x 2½" strip from Fabric C and pair it on the top part of your wall decor piece



DIAGRAM 14

- Quilt as desired, assemble the binding and then, use your preferred method for hanging the wall decor

Wall Decor #3: 10" x 18"

- Start with the Flying Geese Assembly, by taking (1) $2\frac{1}{2}$ " x $1\frac{1}{2}$ " rectangle from Fabric **D** and (2) $1\frac{1}{2}$ " x $1\frac{1}{2}$ " squares from Fabric **G**
- Repeat the Flying Geese construction in order to have a total of (4)



DIAGRAM 15

- Take (2) Flying Geese and pair them as in the Diagram below
- Repeat the assembly process for the other (2) Flying Geese



DIAGRAM 16

- Pair (1) $2\frac{1}{2}$ " x $2\frac{1}{2}$ " square from Fabric **G** in between the two assembled flying geese as in the diagram below



DIAGRAM 17

- Now, take (3) Fabric **C**, (1) Fabric **D**, (1) Fabric **E** and (1) Fabric **F** $6\frac{1}{2}$ " x $1\frac{1}{2}$ " strips and pair them as in the diagram below



DIAGRAM 18

- Take (3) Fabric **C**, (1) Fabric **D**, (1) Fabric **E** and (1) Fabric **F** $6\frac{1}{2}$ " x $1\frac{1}{2}$ " strips and pair them as in the diagram below

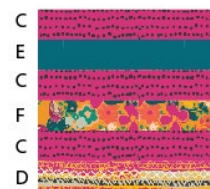


DIAGRAM 19

- Pair the three assembled pieces as in the diagram below

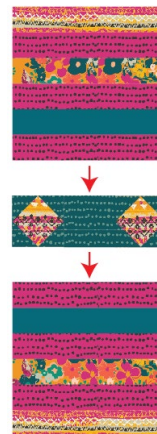


DIAGRAM 20

- Take (2) $2\frac{1}{2}$ " x $14\frac{1}{2}$ " strips from Fabric **G** and pair one on each side.
- Make sure that the strips prints are facing in the vertical direction



DIAGRAM 21

- Take (2) 10½" x 2½" strips from Fabric **G** and pair one on each side.
- Make sure that the strips prints are facing in the horizontal direction



DIAGRAM 22

- Quilt as desired
- Bind your piece, then, use your preferred method for hanging the wall decor

QUILT ASSEMBLY

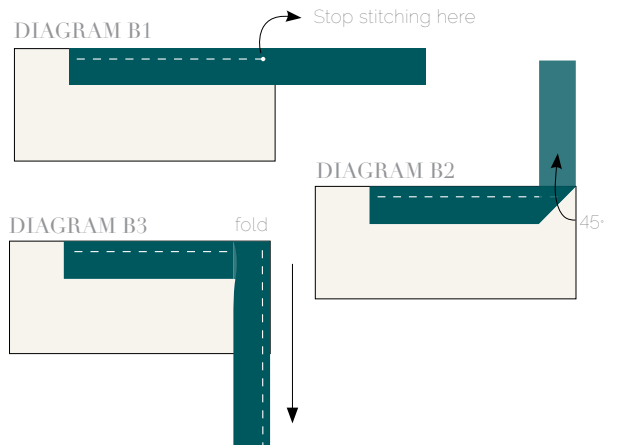
Sew rights sides together.

- Place BACKING FABRIC on a large surface wrong side up. Stretch it with masking tape against that surface.
- Place BATTING on top of backing fabric.
- Place TOP on top of the batting with right side facing up. Smooth away wrinkles using your hands.
- Pin all layers together and baste with basting thread, using long stitches. You can also use safety pins to join the layers.
- Machine or hand quilt starting at the center and working towards the corners. Remember that quilting motifs are a matter of personal preference. Have fun choosing yours!
- After you finished, trim excess of any fabric or batting, squaring the quilt to proceed to bind it.

BINDING

Sew rights sides together.

- Cut enough strips 1½" wide by the width of the fabrics **E, B, C** to make the final strips for each wall decor. Start sewing the binding strip in the middle of one of the sides of the quilt, placing the strip right side down and leaving an approximated 5" tail. Sew with ¼" seam allowance (using straight stitch), aligning the strip's raw edge with the quilt top's raw edge.
- Stop stitching ¼" before the edge of the quilt (**DIAGRAM B 1**). Clip the threads. Remove the quilt from under the machine presser foot. Fold the strip in a motion of 45° and upward, pressing with your fingers (**DIAGRAM B2**). Hold this fold with your finger, bring the strip down in line with the next edge, making a horizontal fold that aligns with the top edge of the quilt (**DIAGRAM B3**). Start sewing at ¼" of the border, stitching all the layers. Do the same in the four corners of the quilt.
- Stop stitching before you reach the last 5 or 6 inches. Cut the threads and remove the quilt from under the machine presser foot. Lay the loose ends of the binding flat along the quilt edge, folding the ends back on themselves where they meet. Press them together to form a crease. Using this crease as the stitching line, sew the two open ends of the binding with right sides together (you can help yourself marking with a pencil if the crease is difficult to see).
- Trim seam to ¼" and press open. Complete the sewing. Turn binding to back of the quilt, turn raw edge inside and stitch by hand using blind stitch.





artgalleryfabrics.com

NOTE: While all possible care has been taken to ensure the accuracy of this pattern, We are not responsible for printing errors or the way in which individual work varies. Please read instructions carefully before starting the construction of this quilt. If desired, wash and iron your fabrics before starting to cut.

© 2018 Courtesy of Art Gallery Quilts LLC. All Rights Reserved.