



# ANGLES

A DIVISION OF AGF

## FREE PATTERN

XXXXXXXXXXXXXXXXXXXXXXXXXXXX



# Ambience

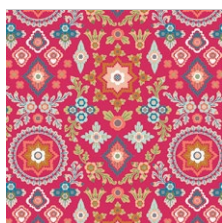
QUILT DESIGNED BY MATTHEW BOUDREAUX

## AURA

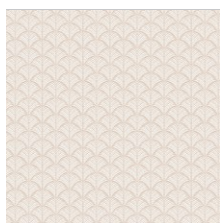
FABRICS DESIGNED BY MATTHEW BOUDREAUX



KAUAI SUNRISE



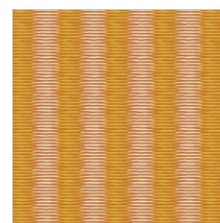
AUR-44900  
ALOHA SPIRIT HIBISCUS



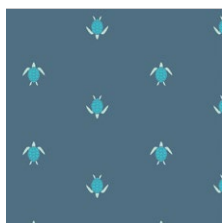
AUR-44901  
LOULU FANS SAND



AUR-44902  
LAKI ISLAND DAYLIGHT



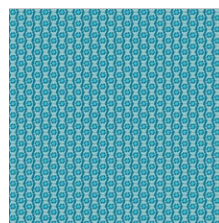
AUR-44903  
TIKI WAY GOLDEN



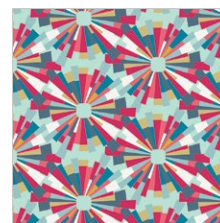
AUR-44904  
HAWAIIAN HONU DUSK



AUR-44905  
MAU LOA CORAL

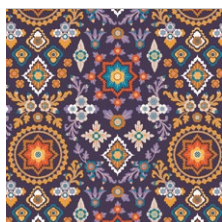


AUR-44906  
HULA DOLPHINS OCEAN

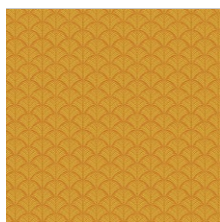


AUR-44907  
LEI BURST PLUMERIA

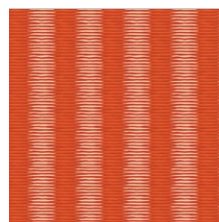
MAUI SUNSET



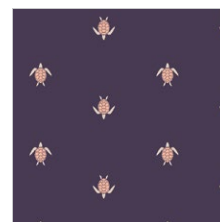
AUR-54900  
ALOHA SPIRIT WINDWARD



AUR-54901  
LOULU FANS SUN



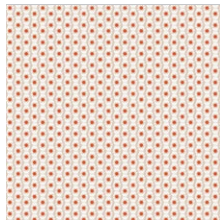
AUR-54903  
TIKI WAY PAPAYA



AUR-54904  
HAWAIIAN HONU DAWN



AUR-54905  
MAU LOA SEABED



AUR-54906  
HULA DOLPHINS VOG



AUR-54907  
LEIS BURST PINEAPPLE



AUR-54902  
LAKI ISLAND NIGHTFALL



FEEL THE DIFFERENCE © 2018 Courtesy of Art Gallery Quilts LLC. All Rights Reserved.



FINISHED SIZE | 70" X 87"

## FABRIC REQUIREMENTS

Fabric <b>A</b>	AUR-44900	5/8 yd.
Fabric <b>B</b>	AUR-44901	5/8 yd.
Fabric <b>C</b>	AUR-44902	5/8 yd.
Fabric <b>D</b>	AUR-44903	5/8 yd.
Fabric <b>E</b>	AUR-44904	5/8 yd.
Fabric <b>F</b>	AUR-44905	5/8 yd.
Fabric <b>G</b>	AUR-44906	1 yd.
Fabric <b>H</b>	AUR-44907	5/8 yd.
Fabric <b>I</b>	AUR-54900	5/8 yd.
Fabric <b>J</b>	AUR-54901	5/8 yd.
Fabric <b>K</b>	AUR-54903	5/8 yd.
Fabric <b>L</b>	AUR-54904	5/8 yd.
Fabric <b>M</b>	AUR-54905	5/8 yd.
Fabric <b>N</b>	AUR-54906	5/8 yd.
Fabric <b>O</b>	AUR-54907	5/8 yd.
Fabric <b>P</b>	AUR-54902	5/8 yd.

### BACKING FABRIC

AUR-44905 5 yds. *(Suggested)*

### BINDING FABRIC

AUR-44906 (Fabric **G**) *(Included)*

## CUTTING PREPERATIONS

### Fabric **A**

- Cut Eight (8) Template 1.
- Cut one (1) Template 2 Left

### Fabric **B**

- Cut Five (5) Template 1
- Cut One (1) Template 2 right.
- Cut one (1) template 2 left.

### Fabric **C**

- Cut eight (8) Template 1.
- Cut One (1) Template 2 Right.

### Fabric **D**

- Cut Nine (9) Template 1..

### Fabric **E**

- Cut eight (8) Template 1.
- Cut One (1) Template 2 Right.

### Fabric **F**

- Cut Nine (9) Template 1..
- Cut One (1) Template 2 left.

### Fabric **G**

- Cut Seven (7) Template 1
- Cut One (1) Template 2 right.
- Cut one (1) template 2 left.

### Fabric **H**

- Cut eight (8) Template 1.
- Cut One (1) Template 2 Right

### Fabric **I**

- Cut Nine (9) Template 1..
- Cut One (1) Template 2 left.
- Cut One (1) Template 2 Right

### Fabric **J**

- Cut Seven (7) Template 1
- Cut Two (2) Template 2 right.

### Fabric **K**

- Cut Nine (9) Template 1
- Cut One (1) Template 2 Left.

### Fabric **L**

- Cut Nine (9) Template 1
- Cut One (1) Template 2 Left

#### Fabric **M**

- Cut Ten (10) Template 1

#### Fabric **N**

- Cut Seven (7) Template 1
- Cut One (1) Template 2 Left

#### Fabric **O**

- Cut Eight (8) Template 1
- Cut One (1) Template 2 right.
- Cut one (1) template 2 left.

#### Fabric **P**

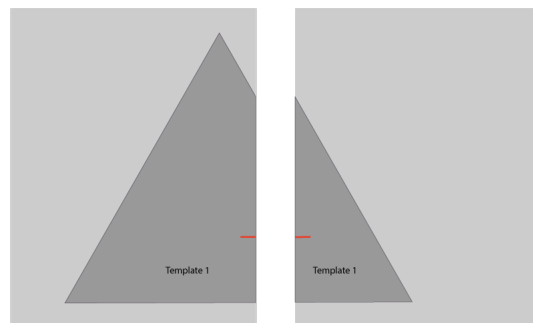
- Cut Nine (9) Template 1
- Cut one (1) Template 1 right
- Cut One (!) Template 1 Left.

## CONSTRUCTION

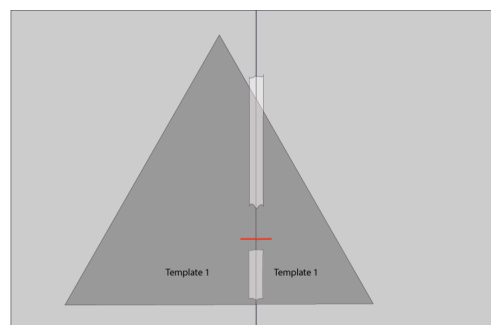
*Sew all rights sides together with  $\frac{1}{4}$ " seam allowance.*

- This Quilt was buided base on a template.  
(Template 1 which is the triangle, Template 2 left and template 2 right.
- Cut the patterns located at the end of the instructions. Template 1 you will have to piece together with tape and then cut.see Diagram 1 for reference.
- once we have all our template pieces cut out we will sew triangles together creating rows
- Once we all our rows buided, we will sew row by row.

For template 1, you will have two pages., tape them together and then cut around the triangle, and that will be your template 1.



Tape pages together



Cut around the triangle

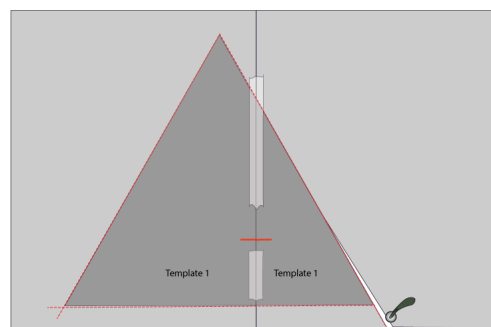


DIAGRAM 1



- Line up each row of triangles in the order seen
- Using a 1/4" seam allowance, join the triangles from left to right. Press seams when finished with each row..



DIAGRAM 2



- Starting from top to bottom, join each row to the one below it, ensuring that the seams line up as you sew. Press seams and prepare for quilting

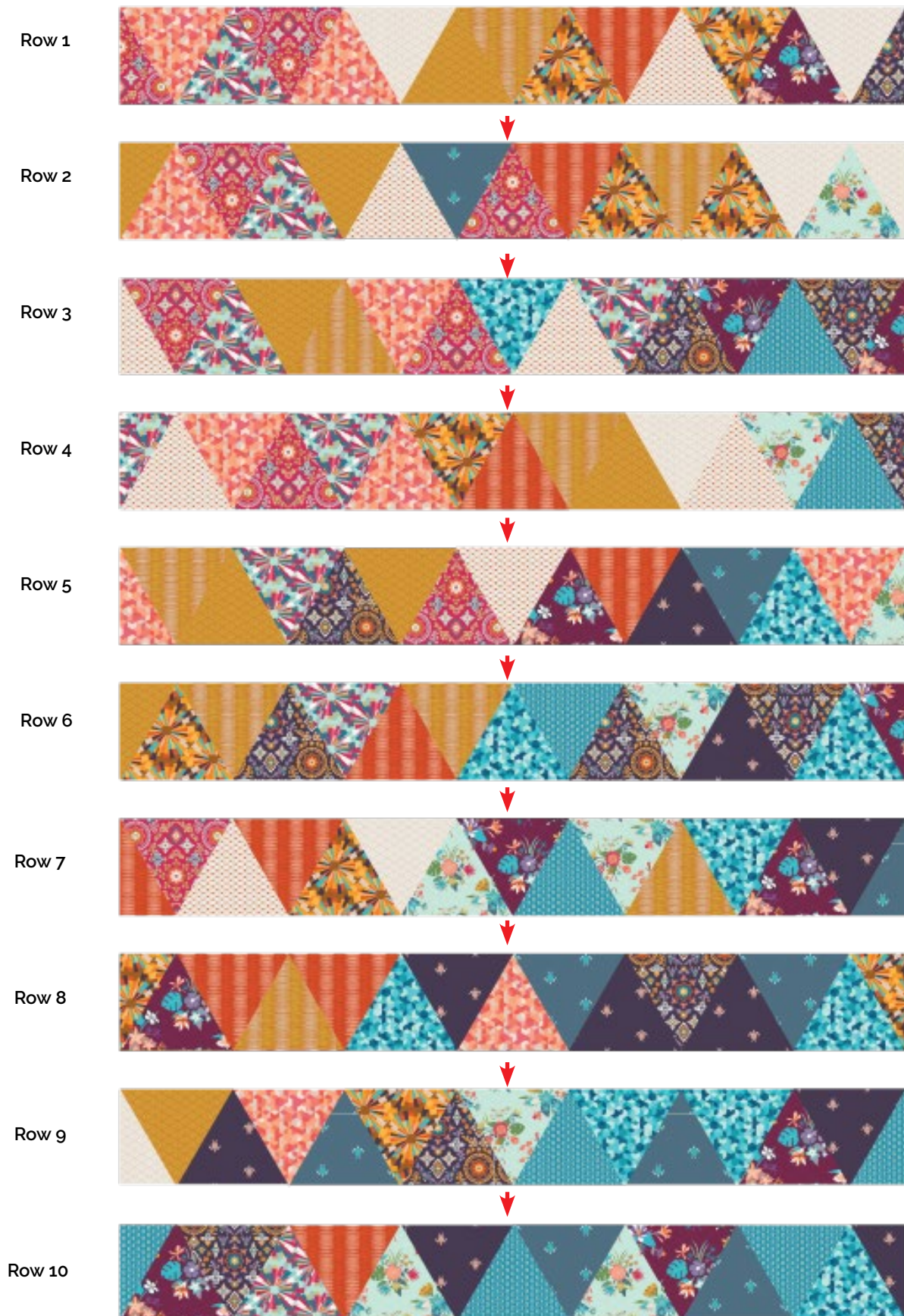


DIAGRAM 3





DIAGRAM 4

## QUILT ASSEMBLY

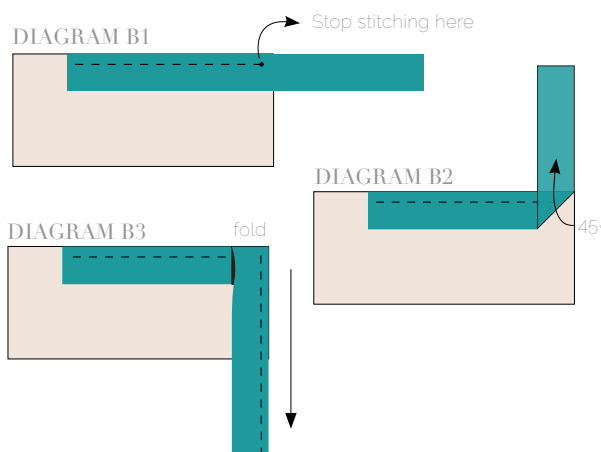
*Sew rights sides together*

- Place BACKING FABRIC on a large surface wrong side up. Stretch it with masking tape against that surface.
- Place BATTING on top of backing fabric.
- Place TOP on top of the batting with right side facing up. Smooth away wrinkles using your hands.

- Pin all layers together and baste with basting thread, using long stitches. You can also use safety pins to join the layers.
- Machine or hand quilt starting at the center and working towards the corners. Remember that quilting motifs are a matter of personal preference. Have fun choosing yours!
- After you finished, trim excess of any fabric or batting, squaring the quilt to proceed to bind it.

*Sew rights sides together.*

- Cut enough strips 1 ½" wide by the width of the fabric to make a final strip 324" long. Start sewing the binding strip in the middle of one of the sides of the quilt, placing the strip right side down and leaving an approximated 5" tail. Sew with ¼" seam allowance (using straight stitch), aligning the strip's raw edge with the quilt top's raw edge.
- Stop stitching ¼" before the edge of the quilt (**DIAGRAM B 1**). Clip the threads. Remove the quilt from under the machine presser foot. Fold the strip in a motion of 45° and upward, pressing with your fingers (**DIAGRAM B2**). Hold this fold with your finger, bring the strip down in line with the next edge, making a horizontal fold that aligns with the top edge of the quilt (**DIAGRAM B3**). Start sewing at ¼" of the border, stitching all the layers. Do the same in the four corners of the quilt.
- Stop stitching before you reach the last 5 or 6 inches. Cut the threads and remove the quilt from under the machine presser foot. Lay the loose ends of the binding flat along the quilt edge, folding the ends back on themselves where they meet. Press them together to form a crease. Using this crease as the stitching line, sew the two open ends of the binding with right sides together (you can help yourself marking with a pencil if the crease is difficult to see).
- Trim seam to ¼" and press open. Complete the sewing. Turn binding to back of the quilt, turn raw edge inside and stitch by hand using blind stitch.



Congratulations  
& enjoy



[artgalleryfabrics.com](http://artgalleryfabrics.com)

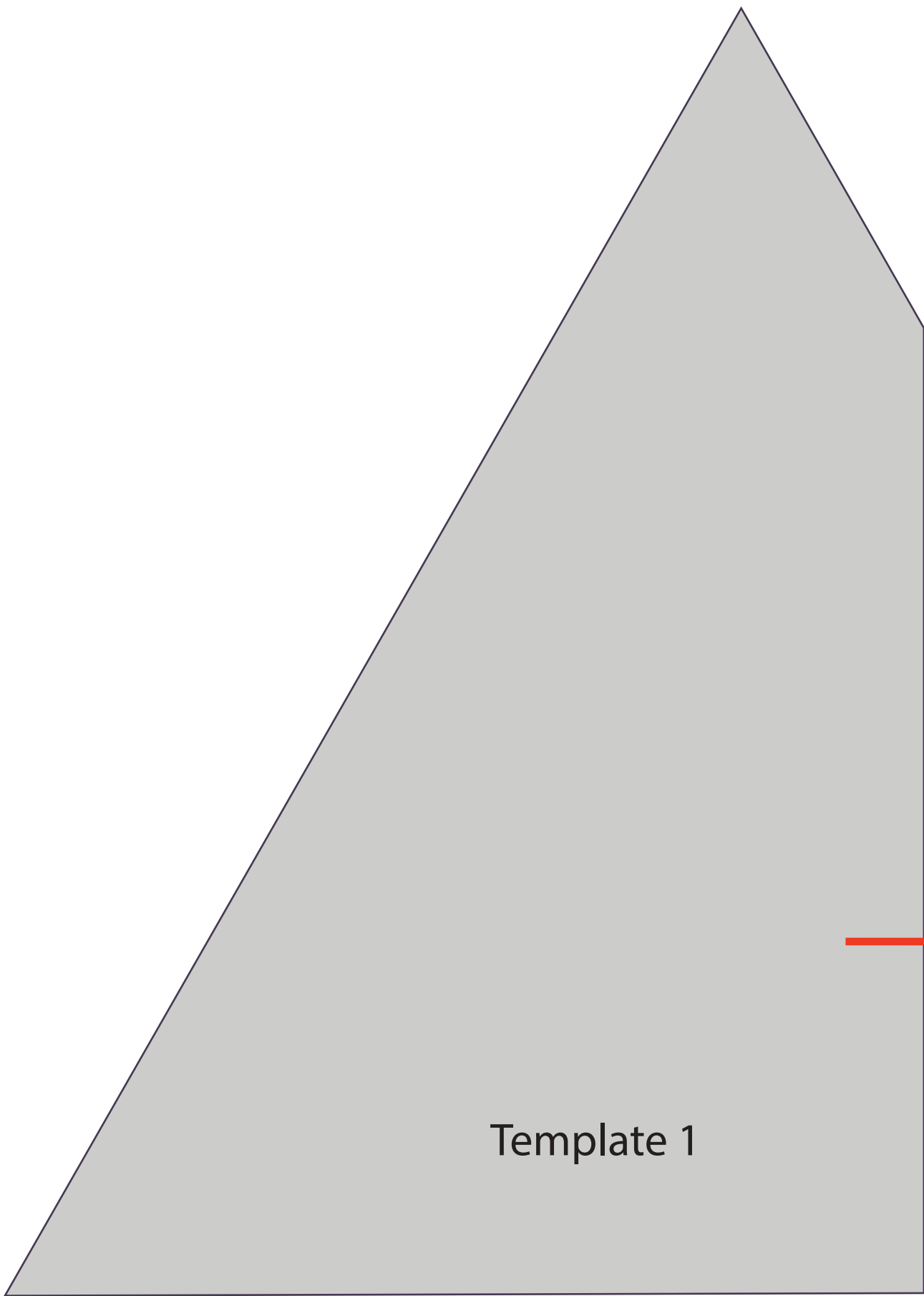
NOTE: While all possible care has been taken to ensure the accuracy of this pattern, We are not responsible for printing errors or the way in which individual work varies. Please read instructions carefully before starting the construction of this quilt. If desired, wash and iron your fabrics before starting to cut.

© 2018 Courtesy of Art Gallery Quilts LLC. All Rights Reserved.



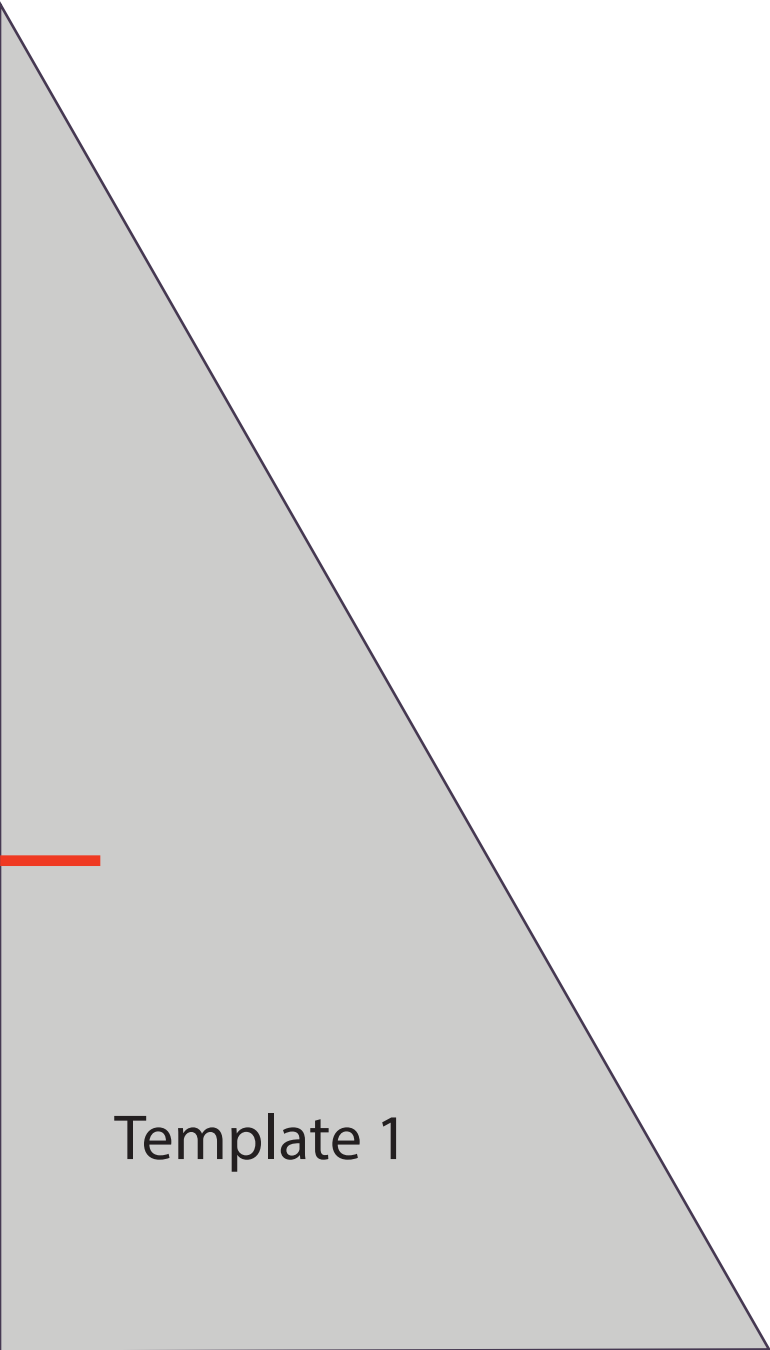


Template  
2 Left

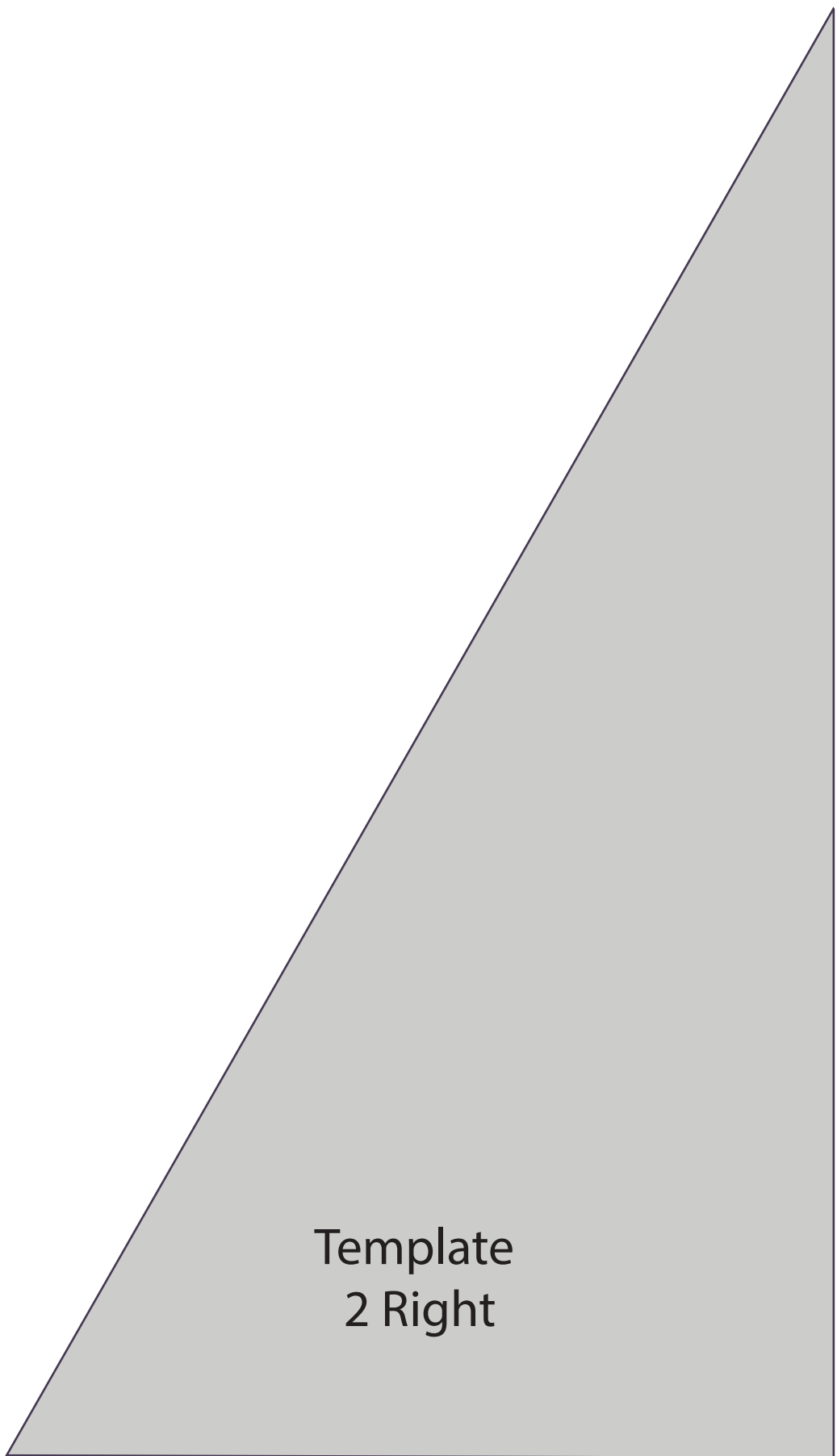


Template 1





Template 1



Template  
2 Right